

BAKIN' BAD
 2834 Atlantic Ave
 Atlantic City NJ
 03/20/2023





VIEW FROM ACROSS BRIGHTON AND ATLANTIC

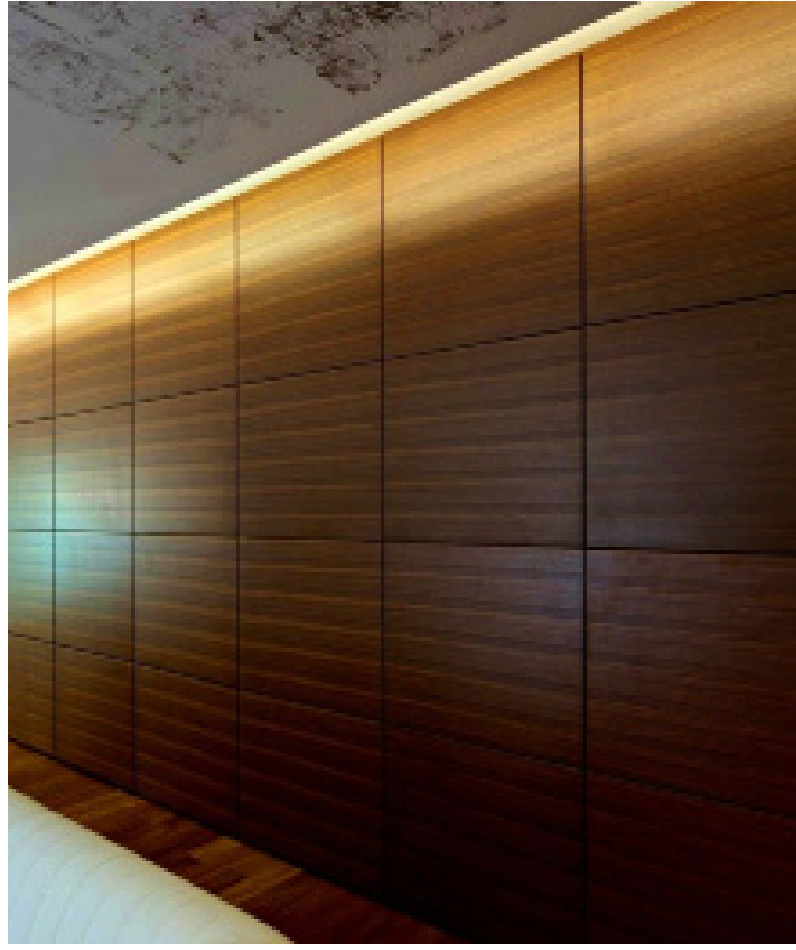


BAKIN' BAD
2834 Atlantic Ave
Atlantic City NJ
03/20/2023



Engineering
& Design





Entry canopies over the entry vestibule storefront windows to mark the store and hold the corner of the block.

Wood and black storefront, along with circular hanging lighting fixtures welcome the customer to an ID and information check point.



VIEW INTO MAIN ENTRY VESTIBULE



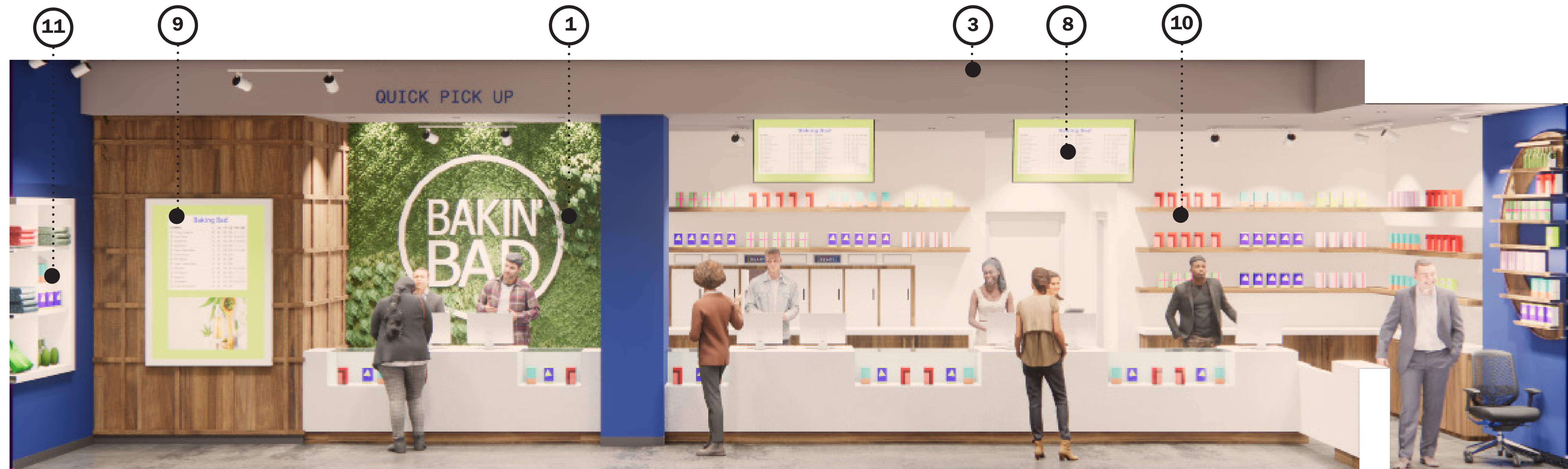
BAKIN' BAD
2834 Atlantic Ave
Atlantic City NJ
03/20/2023



Engineering
& Design

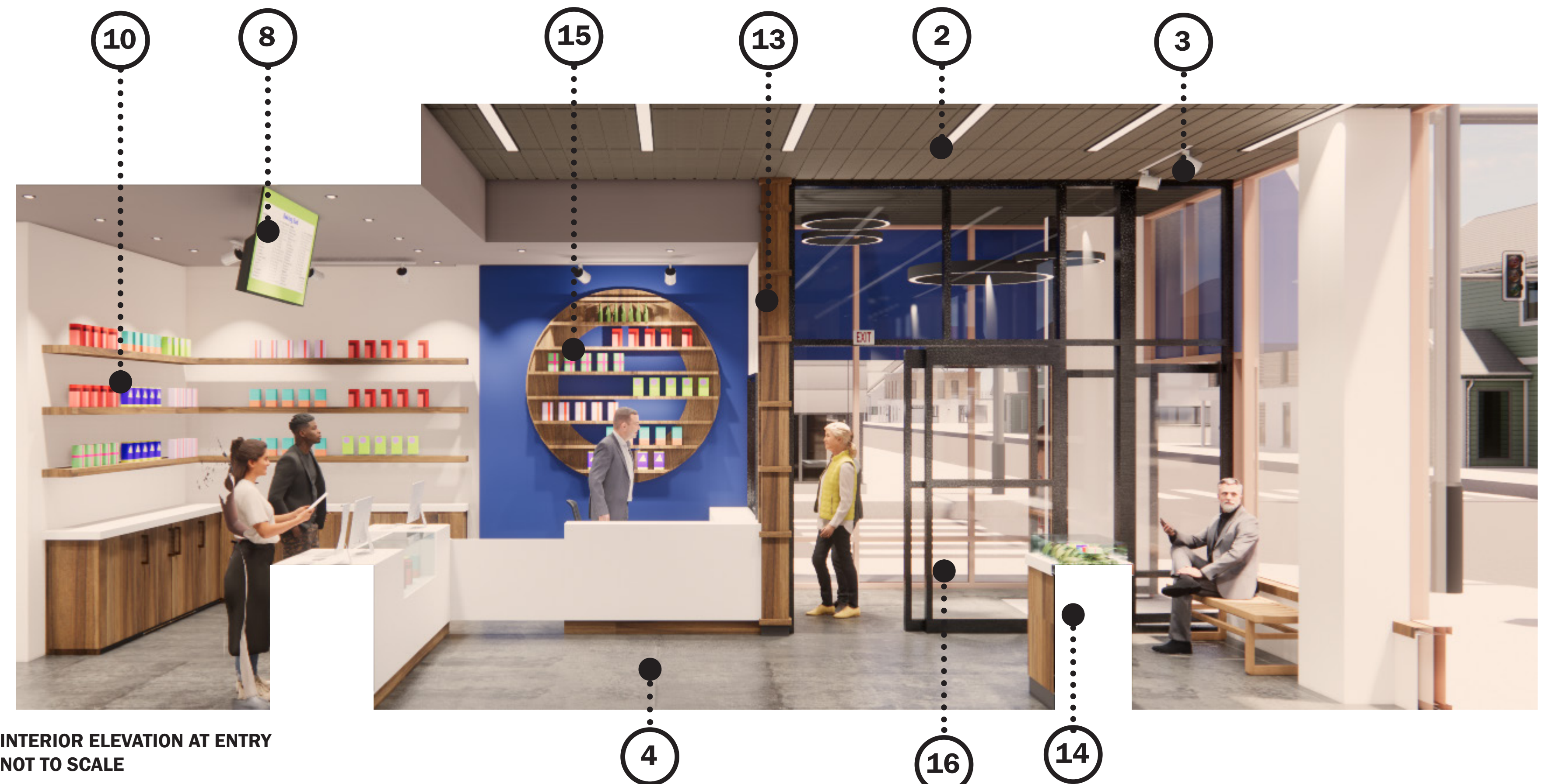


BERGMANN
ARCHITECTS ENGINEERS PLANNERS



INTERIOR ELEVATION AT CHECKOUT
NOT TO SCALE

1. LICHENS AND SUCCULENTS GREEN WALL.
2. LINEAR 2X4 LAY IN CEILING TILE WITH LINEAR LIGHTING.
3. DIRECTIONAL TRACK LIGHTING FOR ILLUMINATING PRODUCT.
4. EPOXY CONCRETE FLOOR.
5. WHITE CORIAN OR HARD SURFACE CHECK OUT COUNTER.
6. THREE CENTER DISPLAY CASES, WOOD TO MATCH WALLS, HIDDEN LOCKABLE CASTERS, LOCKABLE DRAWERS, GLASS TOP FOR PRODUCT DISPLAY, STAND FOR IPAD ORDERING KIOSK.
7. CUSTOM CIRCULAR WALL SHELVEING FOR BRAND PRODUCTS.
8. CEILING MOUNTED FLAT SCREEN FOR ORDER UPDATES.
9. VERTICAL EYE LEVEL MENU DISPLAY.
10. ADJUSTABLE SHELVIN AT BRAND DISPLAYS.
11. BUILT IN CLOTHING DISPLAY.
12. CORIAN CHECKOUT MILLWORK WITH ILLUMINATED GLASS DISPLAY CASES.
13. ARTICULATED WOOD VENEER FINISH.
14. MOVABLE FLOOR DISPLAYS WITH LOCKABLE CASTORS AND INTEGRATED IPAD HOLDER.
15. CUSTOM SHELVEING FOCAL POINT.
16. NEW STOREFRONT ENTRY SYSTEM.



INTERIOR ELEVATION AT ENTRY
NOT TO SCALE



INTERIOR ELEVATION AT EXIT
NOT TO SCALE

1. LICHENS AND SUCCULENTS GREEN WALL.
2. LINEAR 2X4 LAY IN CEILING TILE WITH LINEAR LIGHTING.
3. DIRECTIONAL TRACK LIGHTING FOR ILLUMINATING PRODUCT.
4. EPOXY CONCRETE FLOOR.
5. WHITE CORIAN OR HARD SURFACE CHECK OUT COUNTER.
6. THREE CENTER DISPLAY CASES, WOOD TO MATCH WALLS, HIDDEN LOCKABLE CASTERS, LOCKABLE DRAWERS, GLASS TOP FOR PRODUCT DISPLAY, STAND FOR IPAD ORDERING KIOSK.
7. CUSTOM CIRCULAR WALL SHELVING FOR BRAND PRODUCTS.
8. CEILING MOUNTED FLAT SCREEN FOR ORDER UPDATES.
9. VERTICAL EYE LEVEL MENU DISPLAY.
10. ADJUSTABLE SHELVIN AT BRAND DISPLAYS.
11. BUILT IN CLOTHING DISPLAY.
12. CORIAN CHECKOUT MILLWORK WITH ILLUMINATED GLASS DISPLAY CASES.
13. ARTICULATED WOOD VENEER FINISH.
14. MOVABLE FLOOR DISPLAYS WITH LOCKABLE CASTORS AND INTEGRATED IPAD HOLDER.
15. CUSTOME SHELVING FOCAL POINT.
16. NEW STOREFRONT ENTRY SYSTEM.



INTERIOR ELEVATION AT ATLANTIC AVE.
NOT TO SCALE

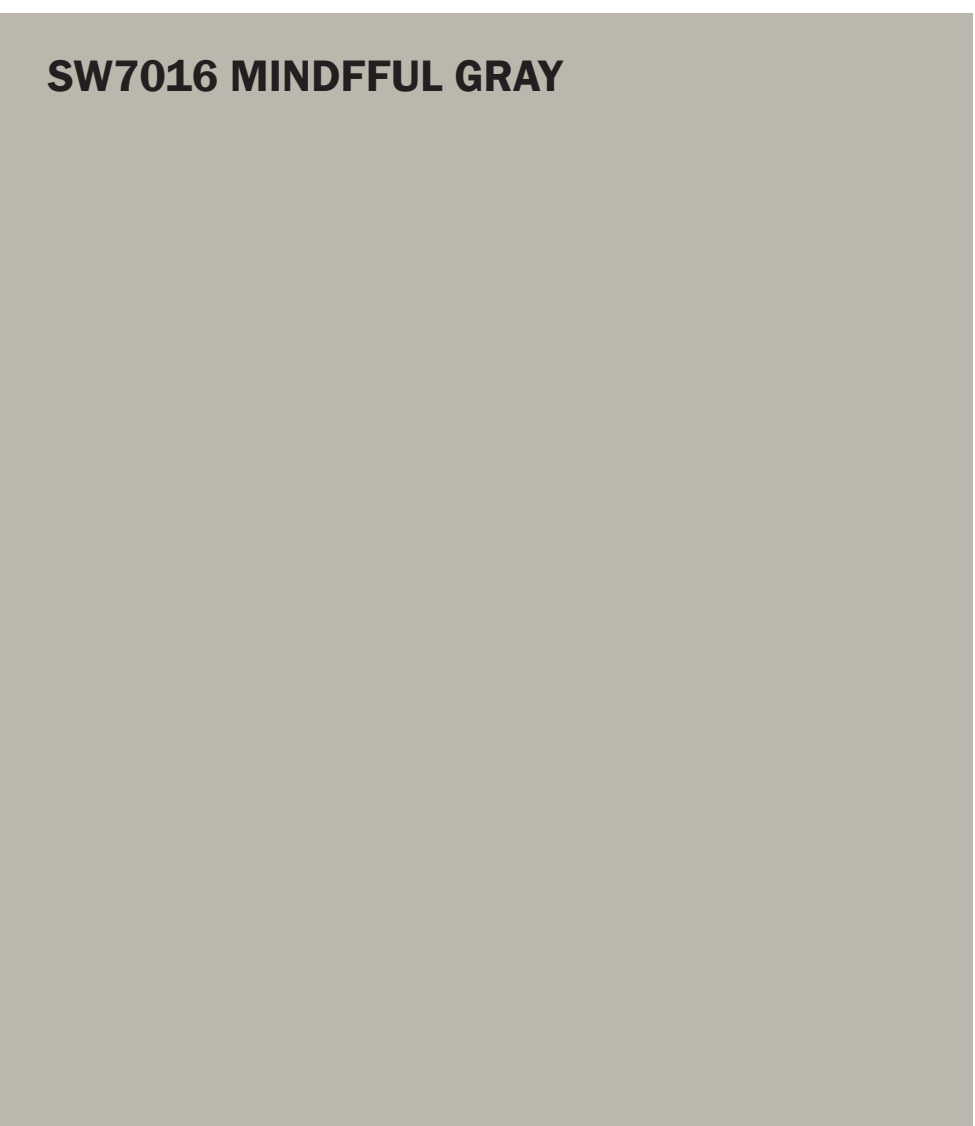
CUSTOM MURAL



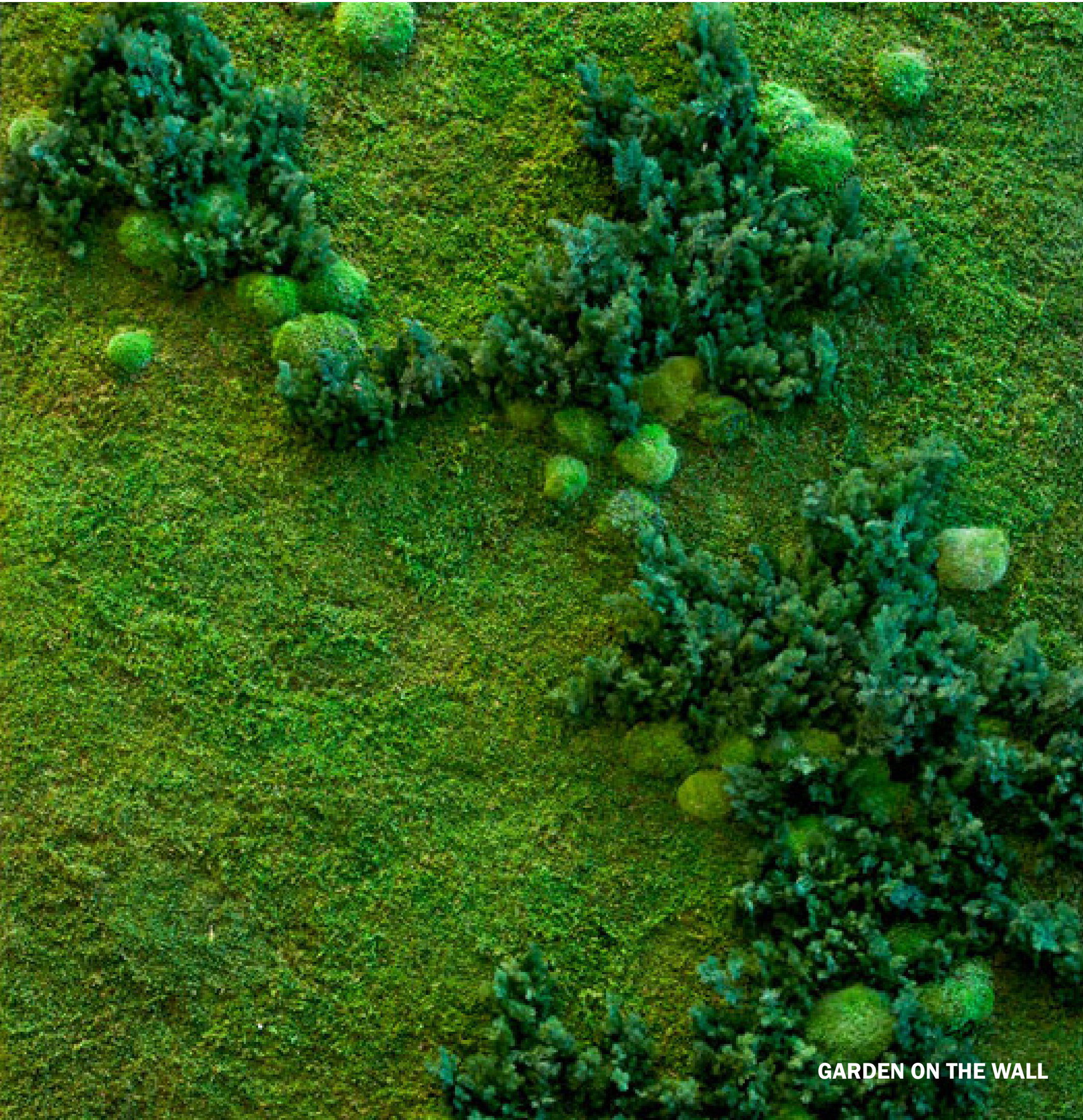
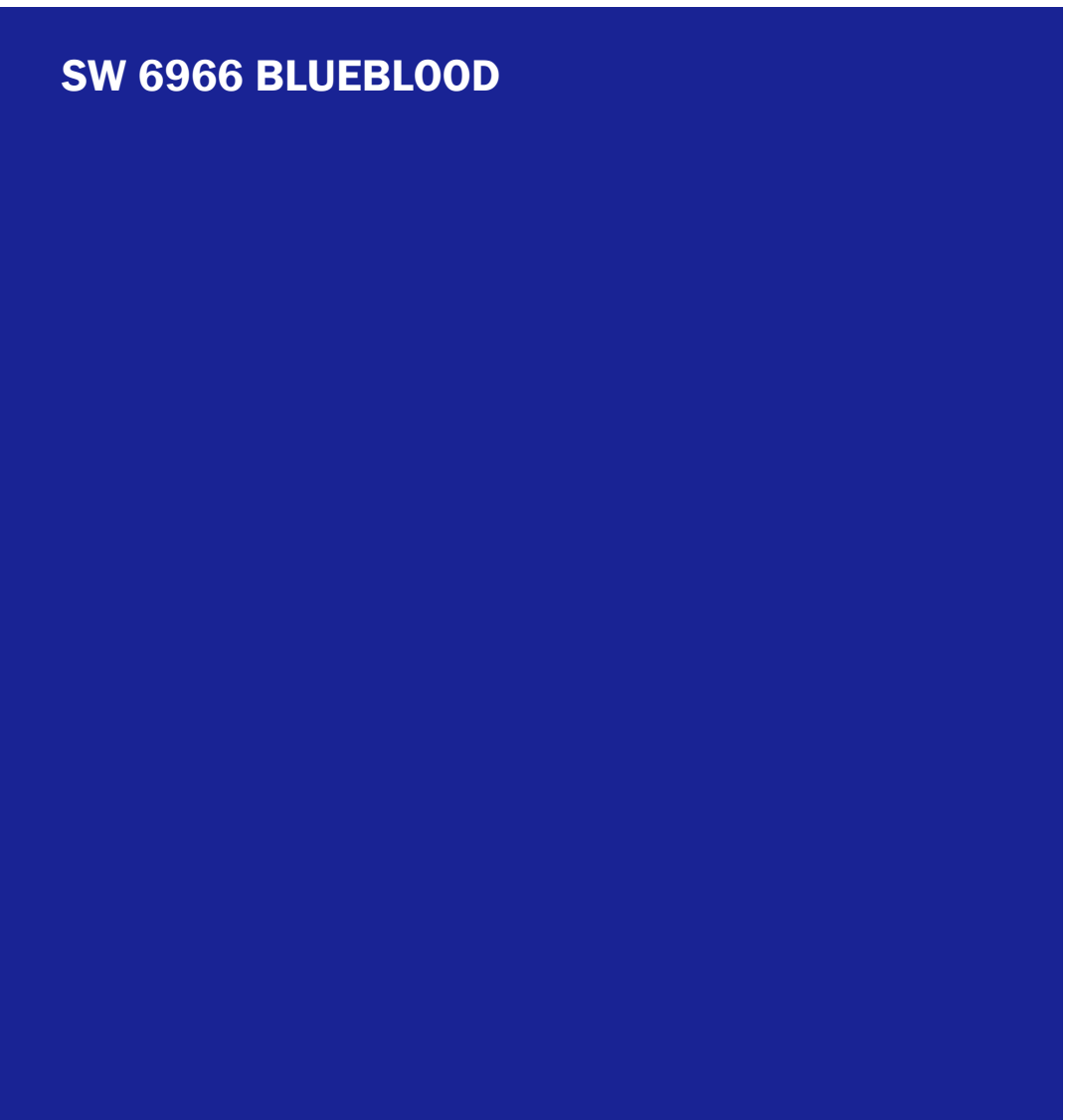
SW7006 EXTRA WHITE



SW7016 MINDDFUL GRAY



SW 6966 BLUEBLOOD

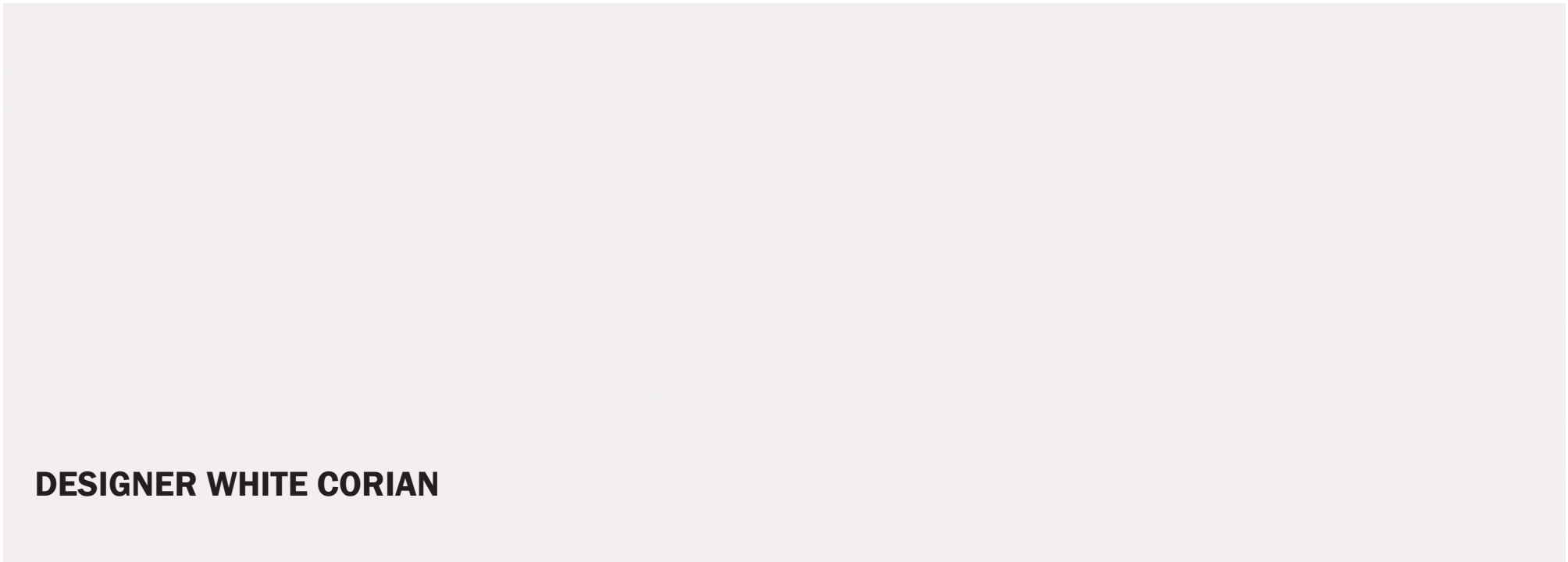


GARDEN ON THE WALL

64816 WASHED WALNUT



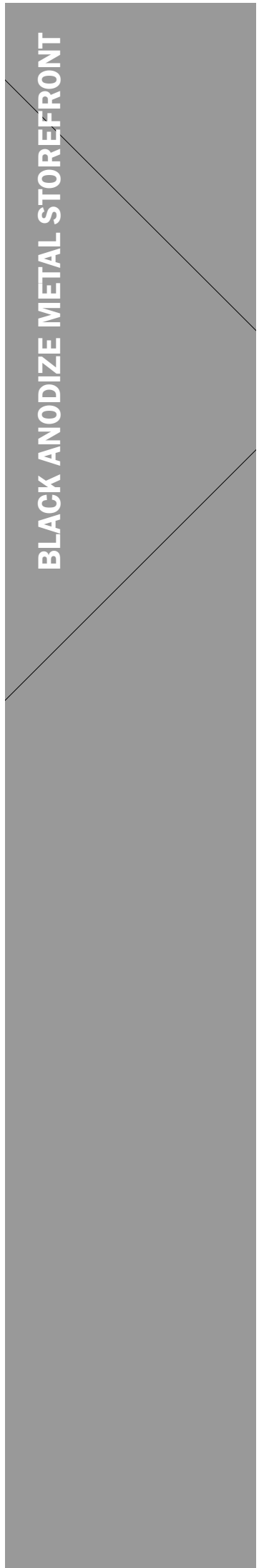
DESIGNER WHITE CORIAN



EPOXY COATED CONCRETE



BLACK ANODIZE METAL STOREFRONT





INTERIOR VIEW



BAKIN' BAD
2834 Atlantic Ave
Atlantic City NJ
03/20/2023



Engineering
& Design





INTERIOR VIEW





EXTERIOR ELEVATION ATLANTIC AVE
NOT TO SCALE



EXTERIOR ELEVATION BRIGHTON AVE
NOT TO SCALE



ENLARGED EXTERIOR ELEVATION AT ATLANTIC AVE
NOT TO SCALE



BAKIN' BAD
2834 Atlantic Ave
Atlantic City NJ
03/20/2023



Engineering
& Design



BERGMANN
ARCHITECTS ENGINEERS PLANNERS

