

sosh architects | atlantic city, nj



# AGRI-KIND



Thomas J. Sykes, A.I.A., P.P.  
Founding Principal  
William A. Salerno, A.I.A., P.P.  
Founding Principal  
Mark Petrella, A.I.A.  
Principal  
Kimberly McCarron, NCARB  
Principal  
John DeRichie, R.A., A.I.A., NCARB  
Principal

THOMAS J. SYKES, AIA, PP - NJ#A100762900  
www.sosbarch.com

ELEVATION - INDIANA AVENUE

SCALE  
1 (2 4 8) — 31 (64)

2
---

PROPOSED CANNABIS FACILITY

BLOCK 289/ LOTS 1, 9, 12, 14  
BLOCK 290 / LOTS 2, 3, 4

ATLANTIC CITY, NJ

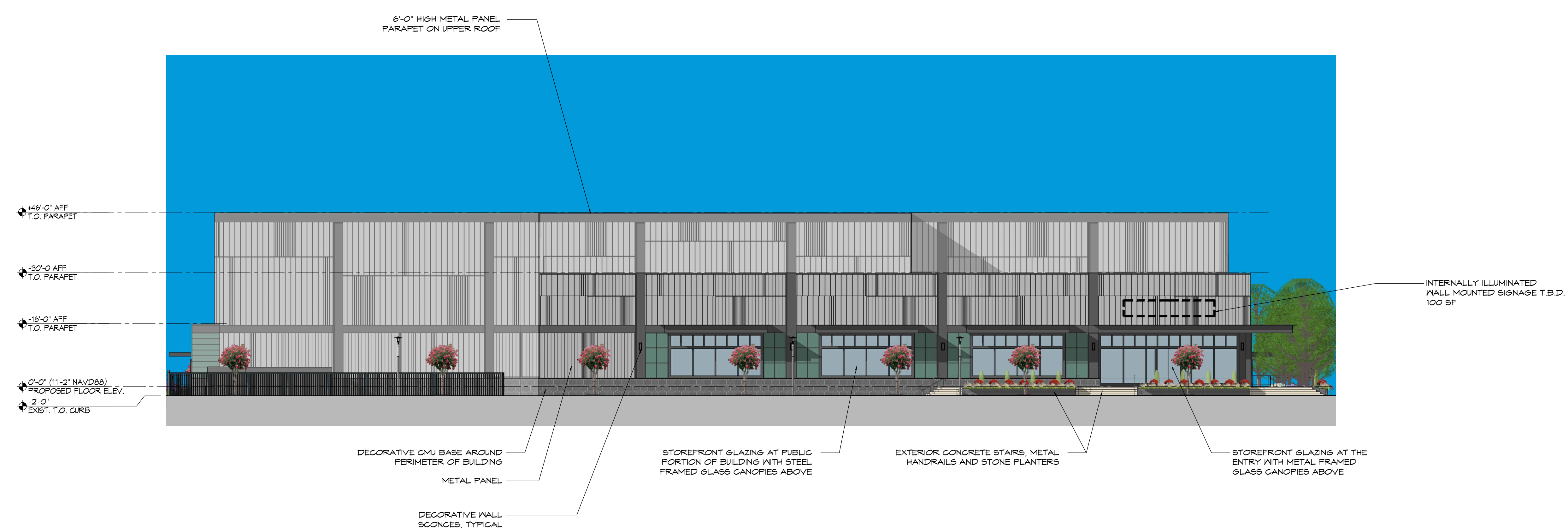
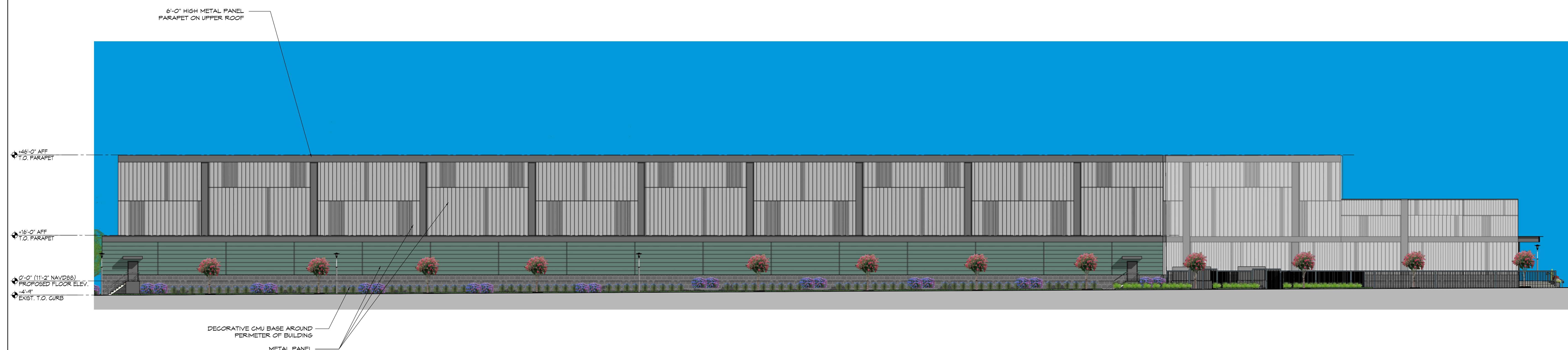
## SUBMISSIONS

[illegible]

DRAWING TITLE:  
**SITE ELEVATIONS**

DRAWN BY:	MS	DRAWING NO.
REVIEWED BY:	TJS	
PROJECT NO.	22032.00.001	

A4



ELEVATION - ATLANTIC AVENUE

SCALE

1
---

DRAWN BY: MS REVIEWED BY: TJS	DRAWING NO.
PROJECT NO. 22032.00.001	A



