

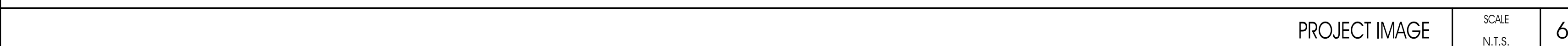


THOMAS J. SYKES, AIA, PP - NJ#AIC0762900
www.sosharch.com

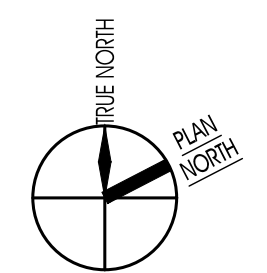
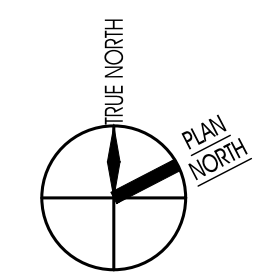
ATLANTIC CITY, NJ

[illegible]

DRAWN BY:	MS	DRAWING NO.
-----------	----	-------------



- AREA OF PROPOSED ADDITION = 125,000 SF

SCALE
N/A

AREA MAP

LOCATION MAP

SCALE
N.T.S.

GENERAL CONTRACTOR
TN Ward Company
815 Atlantic Ave
Atlantic City, NJ 08401
T: (609) 345-5877
F: (609) 345-6071

SCALE
N.T.S.

SCALE
N/A

PROJECT TEAM

SCALE
N/A

1

sosh architects | atlantic city, nj



Thomas J. Sykes, A.I.A., P.P.
Founding Principal
William A. Salerno, A.I.A., P.P.
Founding Principal
Mark Petrella, A.I.A.
Principal
Kimberly McCarron, NCARB
Principal
John DeRichie, R.A., A.I.A., NCARB
Principal

THOMAS J. SYKES, AIA, PP - NJ#A100762900
www.sosarch.com

PROPOSED CANNABIS FACILITY

BLOCK 289/ LOTS 1, 9, 12, 14
BLOCK 290 / LOTS 2, 3, 4

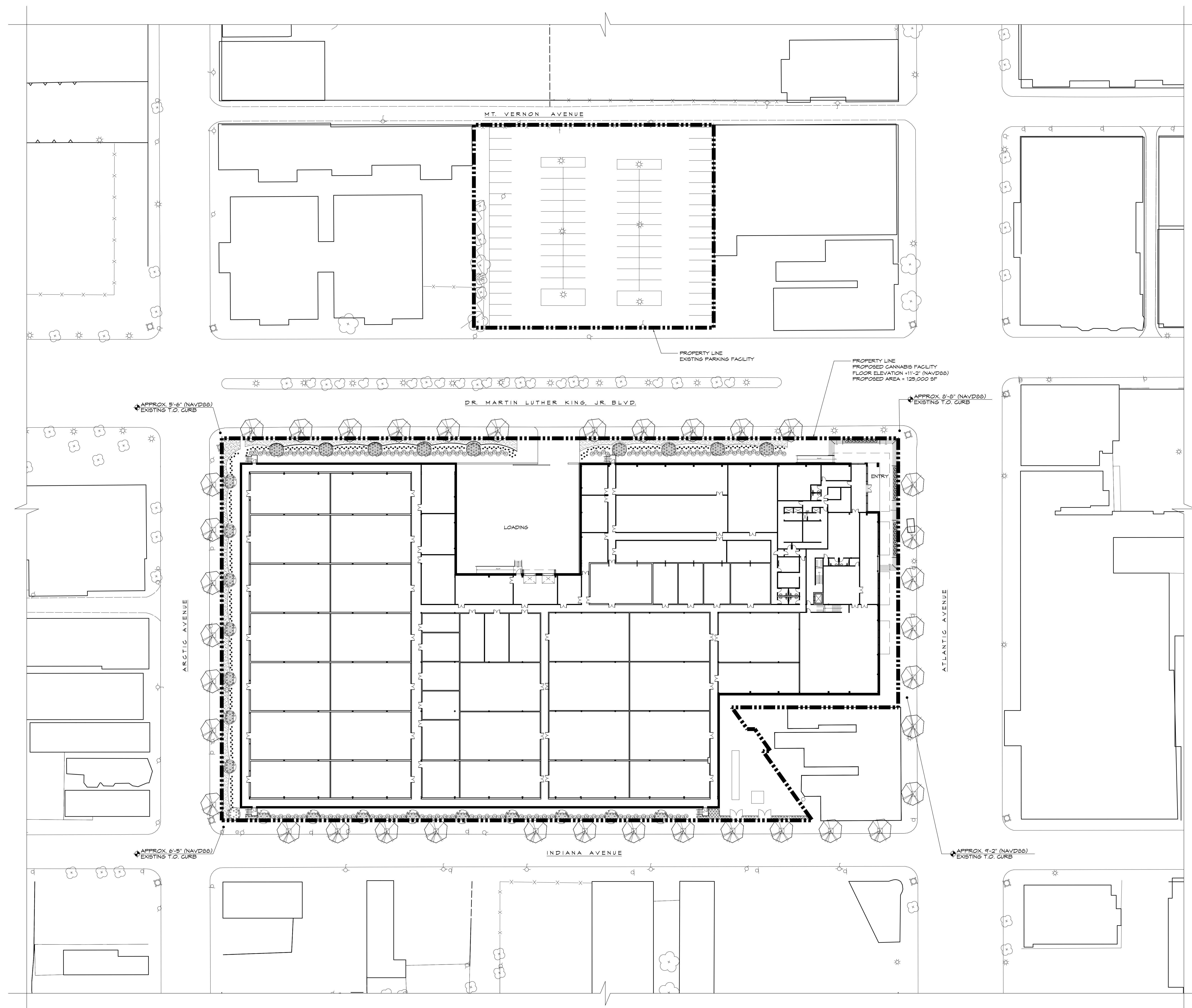
ATLANTIC CITY, NJ

SUBMISSIONS

[illegible]

DRAWING TITLE:
OVERALL SITE PLAN

DRAWN BY:	MS	DRAWING NO. A1
REVIEWED BY:	TJS	
PROJECT NO. 22032.00.001		



OVERALL SITE PLAN

SCALE
1"=30'-0"

1
