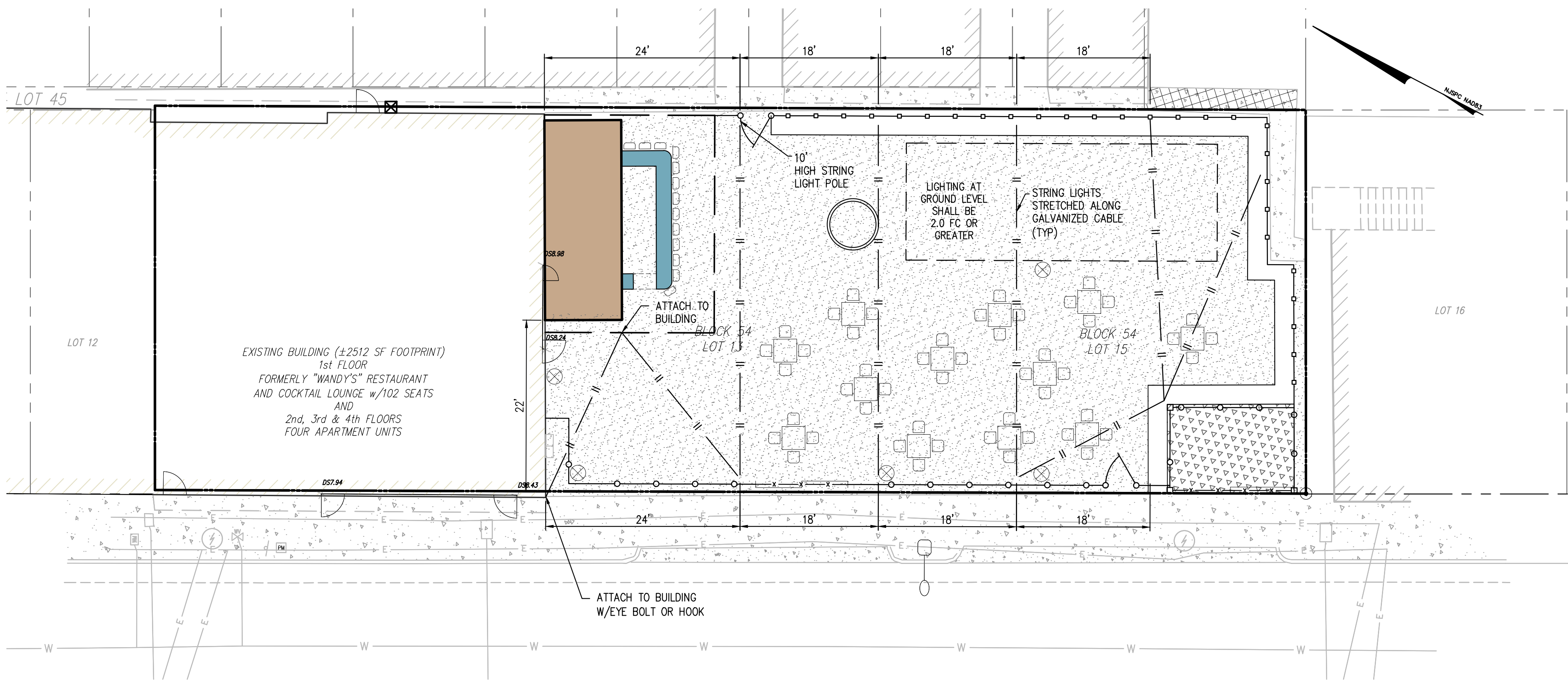
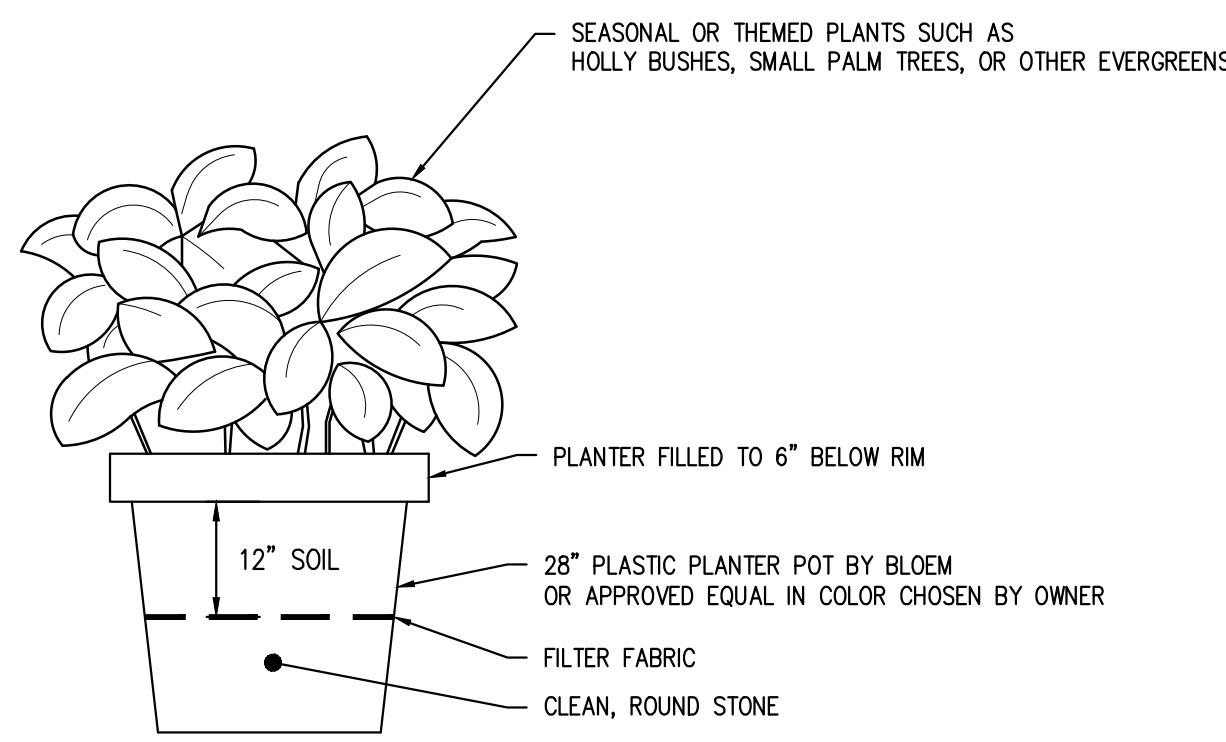


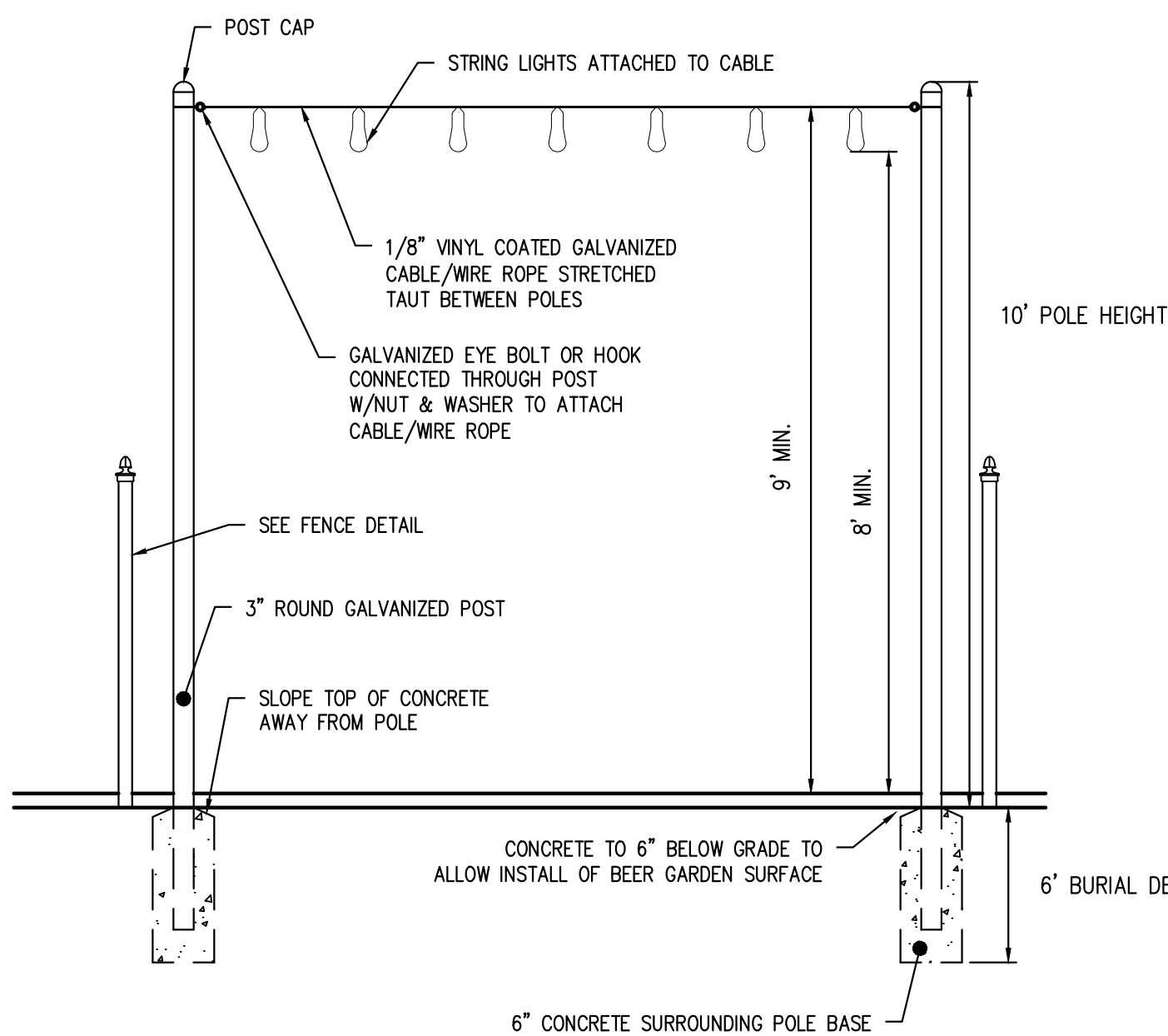
DATE: 08/10/2018 10:00 AM
DRAWN BY: J. T. SCUULLO
CHECKED BY: J. T. SCUULLO
PROJECT: 133 S. TENNESSEE AVE BEER HALL
SHEET: 2 OF 2
811 Know what's below. Call before you dig.



LIGHTING LAYOUT DETAIL
N.T.S.



PLANTER POT DETAIL
N.T.S.



LIGHT POLE DETAIL
N.T.S.

- 330 ft Black Commercial Medium Suspended Socket String Light & LED S14 Premium Warm White Bulbs**
- Kit comes with 165 of the LED S14 Premium bulbs (0.65 watts each).
 - Kit includes one reel and 165 bulbs.
 - Bulb size: 1.75" wide and 3.5" high with base.
 - Average bulb life: 30,000 hours.
 - Not dimmable.
 - Made of weather-resistant, break-resistant durable plastic.
 - Medium base is 1" wide.
 - If one bulb burns out, the rest stay lit.
 - 24" spacing between sockets. 165 sockets per reel. Total length is 330 feet.
 - Maximum run is 1800 watts. With LED bulbs, you can use the entire reel.
 - The sockets have suspenders which hang 4" from the cord (to the bottom of the sockets). With bulbs, they hang down about 7".
 - This reel DOES NOT come with plugs. It is intended to be hard-wired to a power source or you can attach your own plugs.
 - Manufactured with 14-gauge wire and high-quality sockets.
 - PVC socket forms a tight waterproof seal around the bulb.
 - For indoor or outdoor use and typically permanent installation.
 - Light strings shall be professionally installed by an electrician.
 - Lights shall be permanently mounted to structures per manufacturer's recommendations. Manufacturer's recommended maximum overall length on one line shall be followed. Manufacturer's recommended distances between support structures shall be followed. Lights shall not dip to a height of less than 8 feet above grade. Supports (typical 4"x4" pressure treated posts or steel poles) shall be installed permanently into ground in order to provide a stable structure for lights.
 - Lights shall be set on timers with the ability to provide approximately 25% of the lights to operate in the closed hours for security purposes (and 75% to be off during closed hours).
 - Assembly required. Bulbs will need to be screwed in.

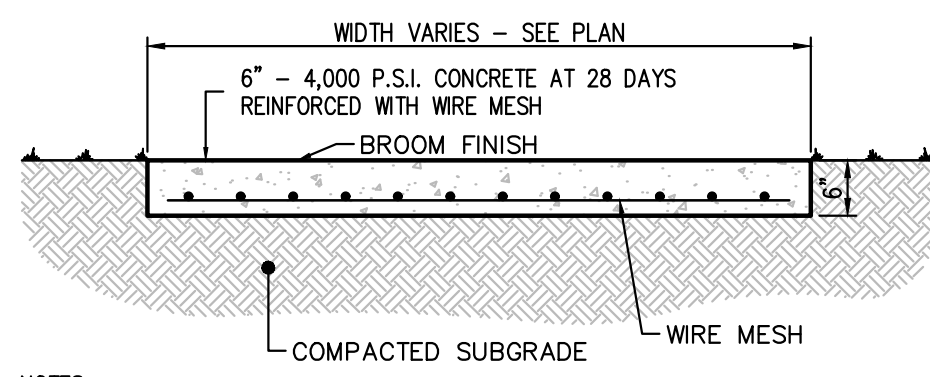


STRING LIGHT DETAIL & NOTES



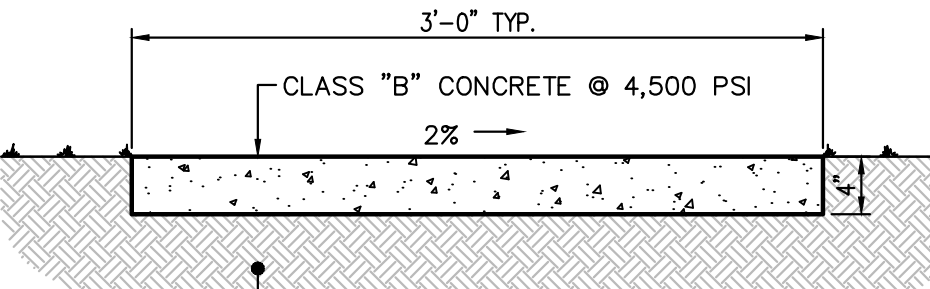
- NOTES:
- REPLACED SIGN SHALL NOT EXCEED SIZE, PROJECTION, OR SIGN FACE AREA OF ORIGINAL 'WANDY'S' CANOPY SIGN.
 - DETAILS OF FABRICATION, MATERIAL SELECTION, COLORS, AND GRAPHICS SHALL BE PROVIDED TO THE CDBA FOR REVIEW AND APPROVAL PRIOR TO INSTALLATION.

PROPOSED BUILDING MOUNTED SIGN
N.T.S.



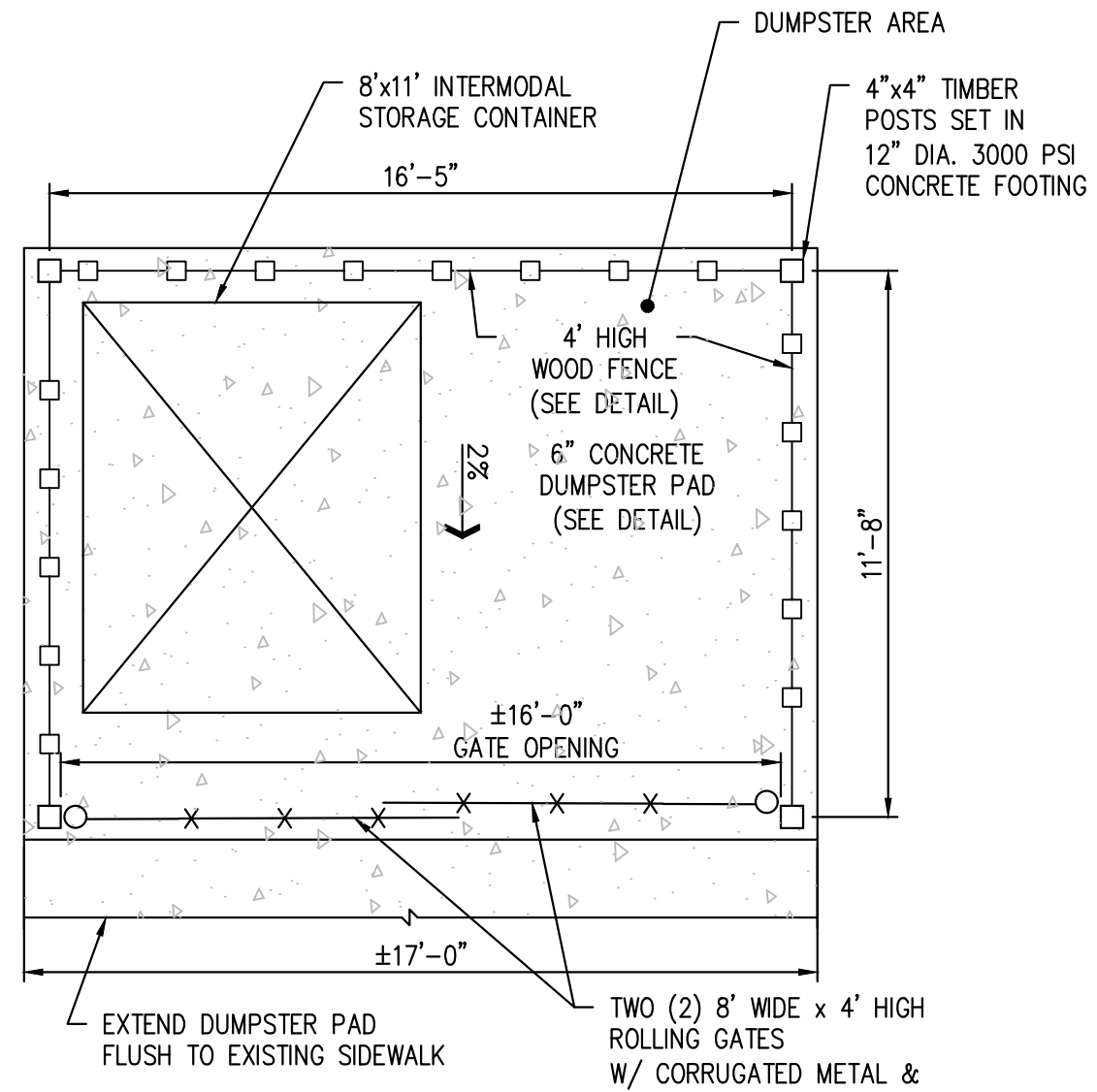
- NOTES:
- EXPANSION JOINTS SHALL BE 1/2" WIDE AND PROVIDED AT INTERVALS TO PREVENT CRACKING AND SHALL BE FILLED WITH 1/2" THICK CELLULAR COMPRESSION MATERIAL TO WITHIN 1/4" OF TOP OF PAD.
 - SURFACE GROVES SHALL BE CUT AT LEAST 3/4" DEEP AT RIGHT ANGLES TO THE OUTSIDE OF PAD.
 - SURFACE EDGES SHALL BE ROUNDED TO 1/2" RADII.
 - FINISH SHALL BE WOOD FLAT, FOLLOWED BY BROOMING TO A NEAT, WORKMANLIKE SURFACE.

CONCRETE DUMPSTER PAD DETAIL
N.T.S.

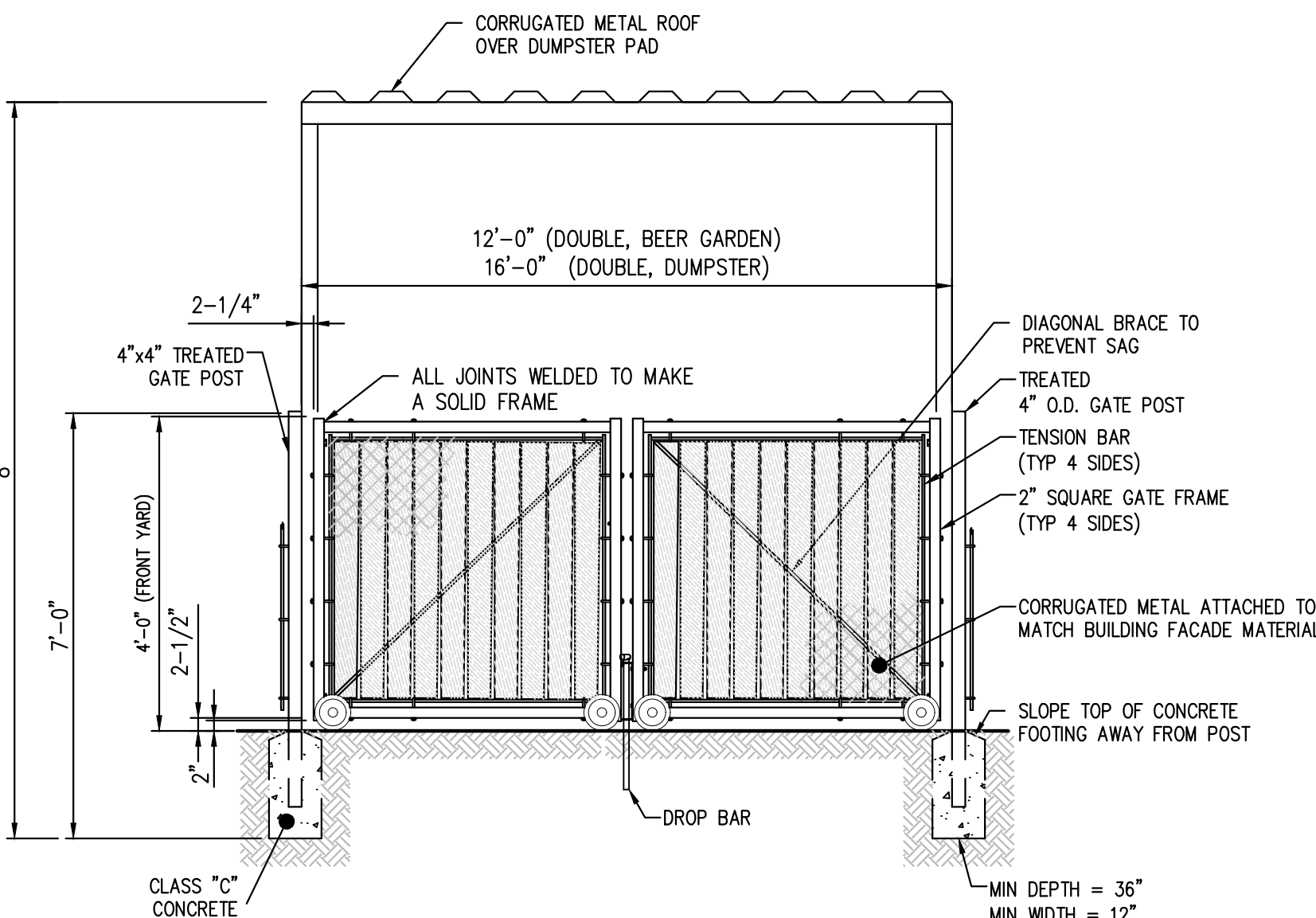


- NOTES:
- EXPANSION JOINTS TO BE AT 20 FT C.C. CONTROL JOINTS TO BE AT 4 FT C.C. EXPANSION JOINT MATERIAL TO BE CORK OR MASTIC MATERIAL OR APPROVED EQUAL.
 - 2% SLOPE INDICATES FLOW AWAY FROM BUILDING TO ROADWAY OR PARKING AREA.
 3. SIDEWALK SURFACE TO BE BROOM FINISH.
 - CONCRETE TO HAVE 8-10% AIR ENTRAINMENT.

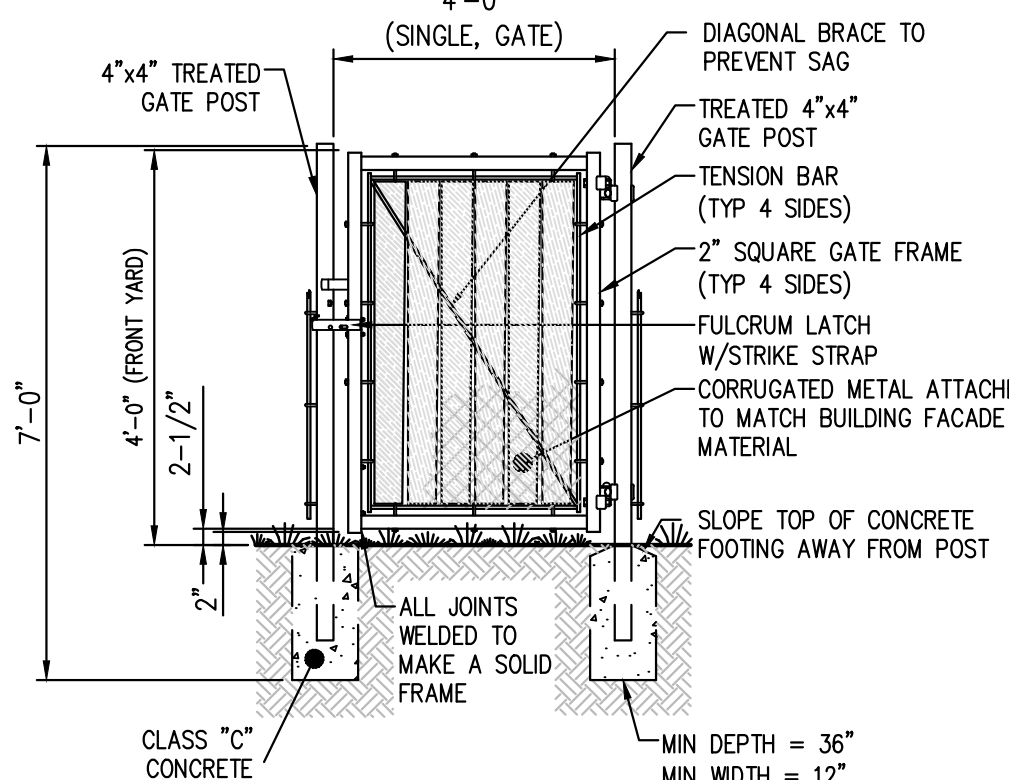
CONCRETE SIDEWALK DETAIL
N.T.S.



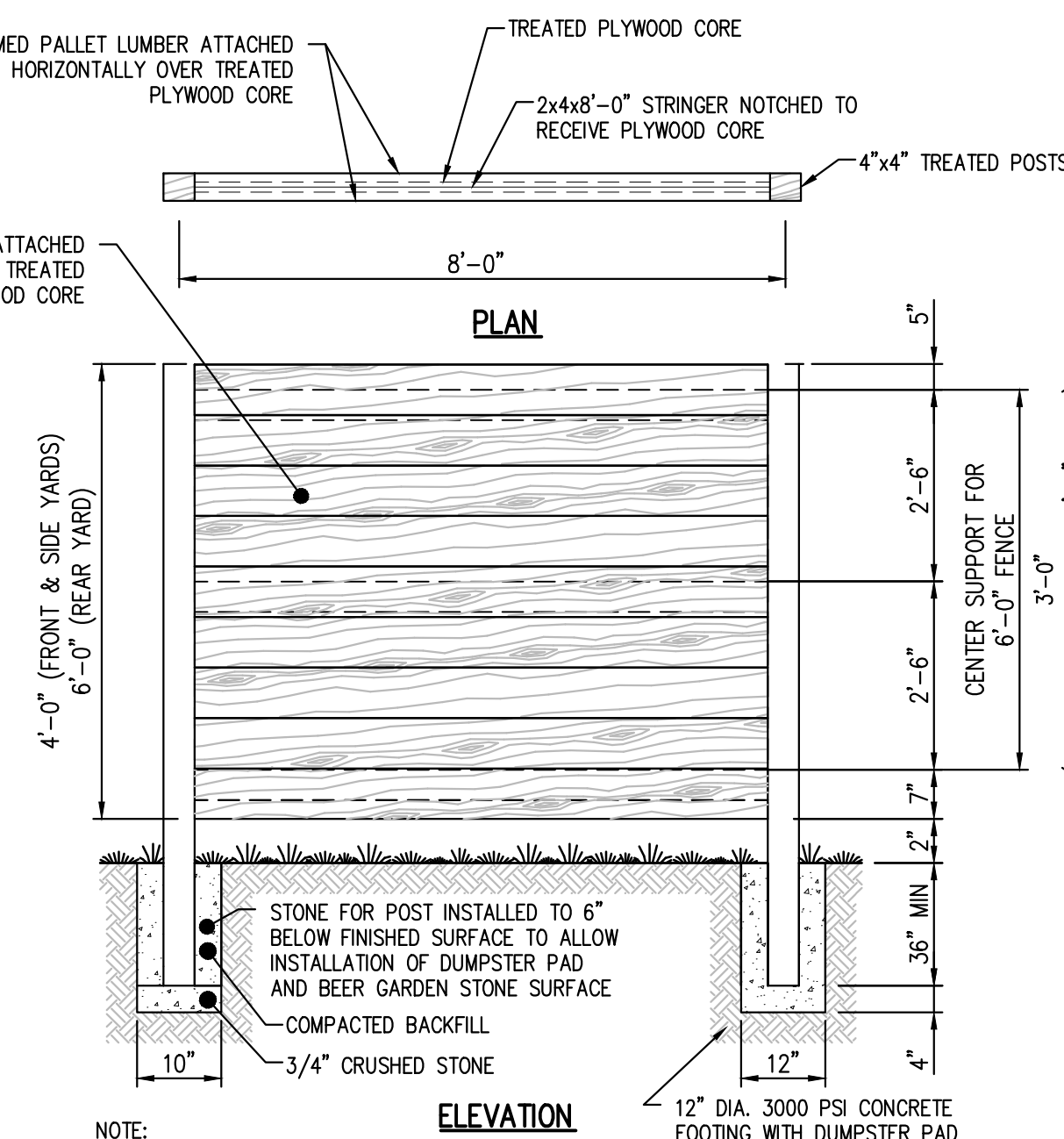
DUMPSTER PAD LAYOUT
N.T.S.



GATE ELEVATION
DOUBLE ROLLING GATE DETAIL
N.T.S.



SINGLE SWING GATE DETAIL
N.T.S.



- NOTE:
- ALL WOOD MATERIAL TO BE EITHER PRESSURE TREATED OR CEDAR.
 - FINISHED SIDE OF FENCE SHALL FACE OUTWARD.

WOOD PANEL FENCE DETAIL
N.T.S.

133 S. TENNESSEE AVE BEER HALL
BLOCK 54, LOTS 13 & 15
ATLANTIC CITY ATLANTIC COUNTY, NEW JERSEY

SITE DETAILS

ALPHA FUNDING INC.
28 UNION AVENUE
LAKEHURST, NEW JERSEY 08733

DATE	ISSUE NO.	BY	APPR.
8/10/2018	3	J. T. SCUULLO	J. T. SCUULLO
8/10/2018	2	J. T. SCUULLO	J. T. SCUULLO
8/10/2018	1	J. T. SCUULLO	J. T. SCUULLO

PROJECT NO.
ALP 001.03
SCALE
1" = 10'

2 OF 2

C1101

ALL INFORMATION CONTAINED HEREIN IS THE PROPERTY OF SCUULLO ENGINEERING SERVICES, LLC AND IS NOT TO BE REPRODUCED OR TRANSMITTED IN ANY FORM OR BY ANY MEANS, ELECTRONIC OR MECHANICAL, INCLUDING PHOTOCOPYING, RECORDING, OR BY ANY INFORMATION STORAGE AND RETRIEVAL SYSTEM. ANY REUSE, MODIFICATION, OR ADAPTATION OF THIS DOCUMENT WITHOUT THE WRITTEN PERMISSION OF SCUULLO ENGINEERING SERVICES, LLC IS PROHIBITED. SCUULLO ENGINEERING SERVICES, LLC AND ITS AFFILIATES SHALL NOT BE LIABLE FOR ANY DAMAGES, LOSSES AND EXPENSES ARISING OUT OF OR RESULTING FROM THE USE OF THIS DOCUMENT.

SCUULLO ENGINEERING SERVICES, LLC
4915 VENTURA AVENUE, SUITE 3
MARGATE, NEW JERSEY 08402
PHONE: (609) 300-5171
WWW.SCUULLOENGINEERING.COM
NJ CERTIFICATE OF AUTHORIZATION NO. Z64636290700

JASON T. SCUULLO, P.E., P.P.
PROFESSIONAL ENGINEER, NEW JERSEY LICENSE NO. 24604686000
PROFESSIONAL PLANNER, NEW JERSEY LICENSE NO. 33000628400