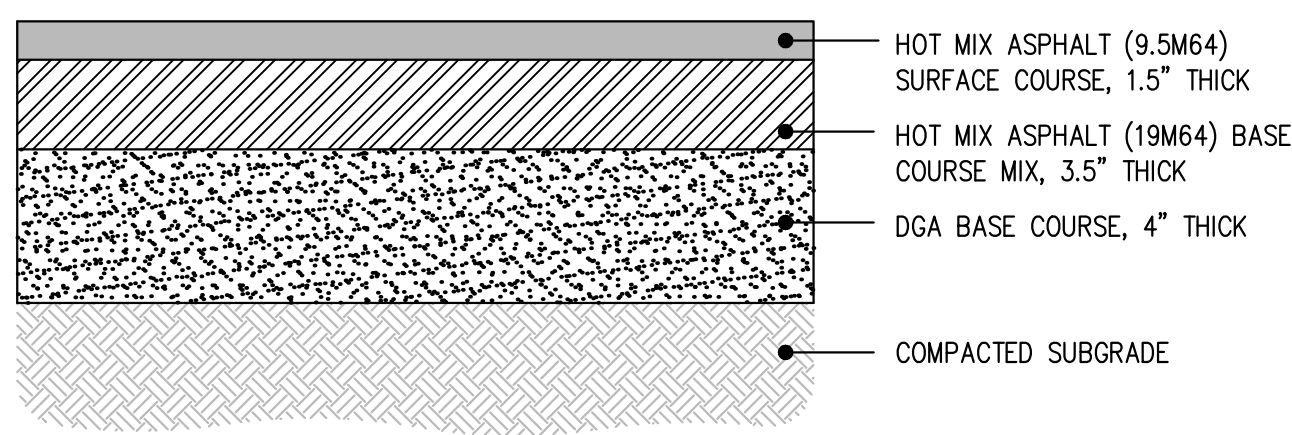


DATE: 11/17/2018 10:41:00 AM DRAWN BY: JTS CHECKED BY: JTS

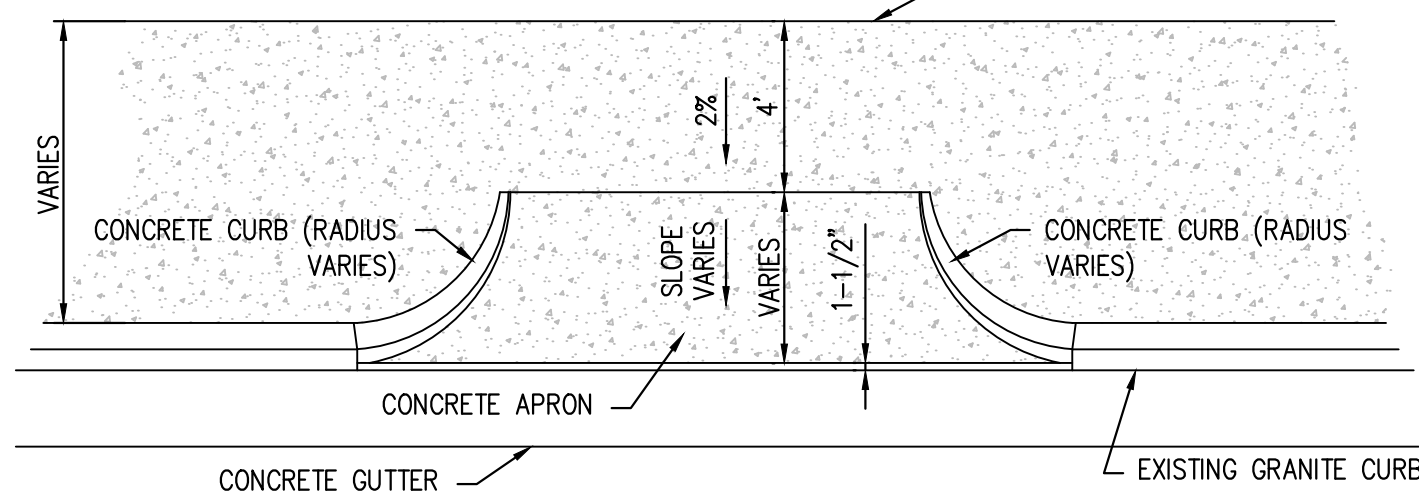
811 Know what's below. Call before you dig.

1. EXISTING UTILITY INFORMATION SHOWN ON THESE PLANS IS FURNISHED BY THE UTILITY COMPANIES AND/OR THE SURVEYOR AND THE ACCURACY THEREOF IS NOT THE RESPONSIBILITY OF SCULLO ENGINEERING SERVICES, LLC. IT IS THE RESPONSIBILITY OF THE OWNERS AND/OR CONTRACTOR TO CALL 1-800-272-1000 FOR FIELD LOCATION OF UNDERGROUND UTILITIES PRIOR TO CONSTRUCTION.

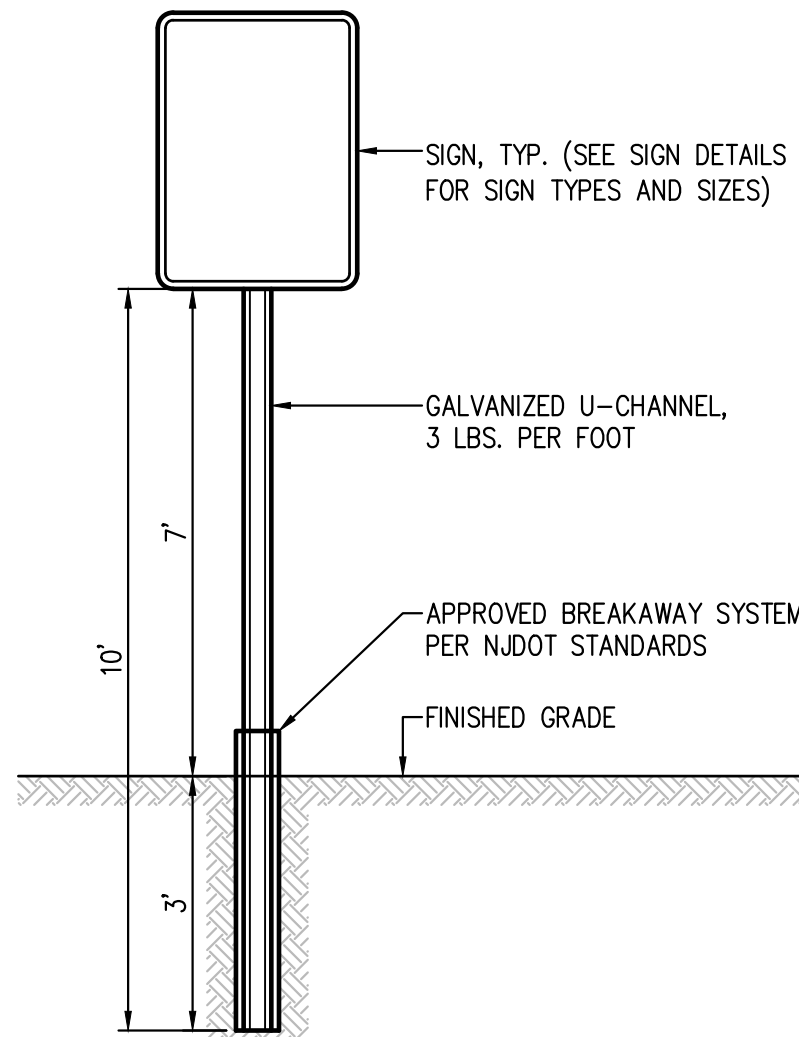
2. THESE PLANS ARE NOT FOR CONSTRUCTION UNTIL "ISSUED FOR CONSTRUCTION" APPEARS IN THE TITLEBLOCK.



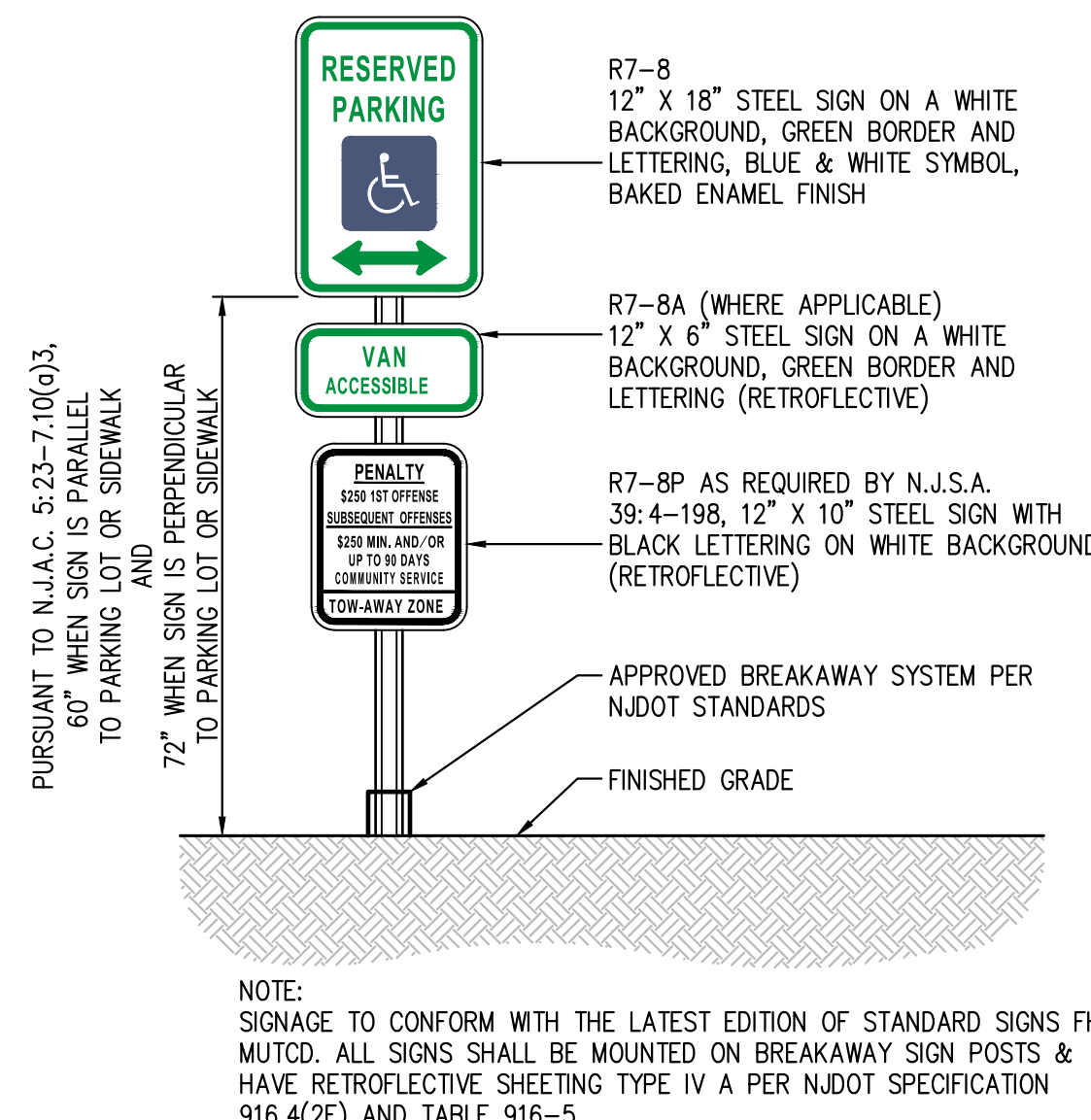
PAVING DETAIL  
N.T.S.



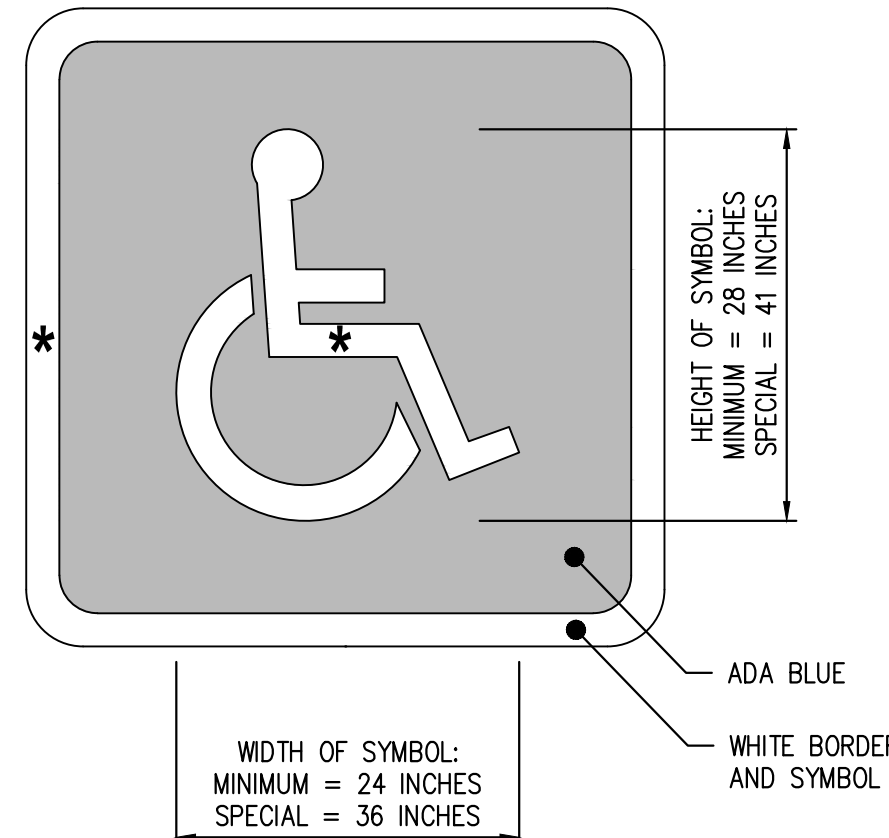
DRIVEWAY APRON DETAIL  
N.T.S.



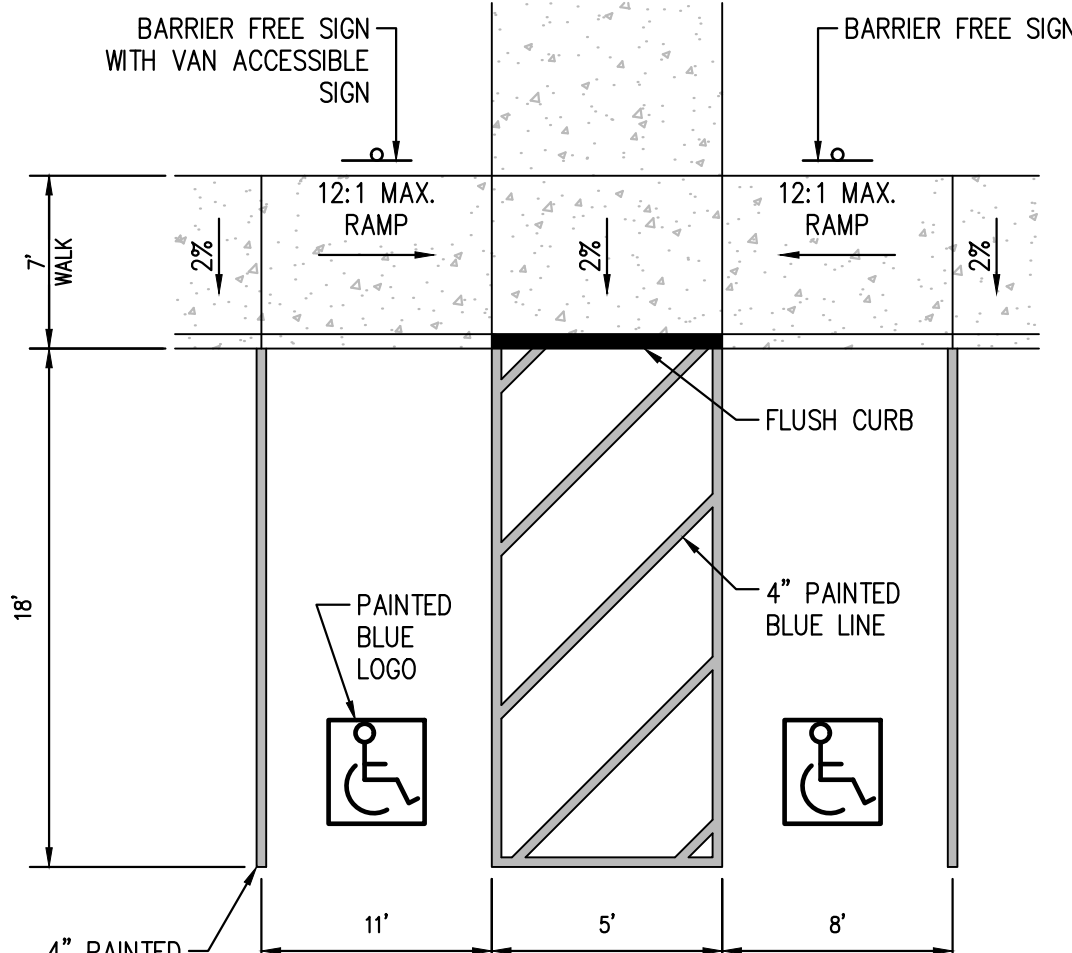
SIGN POLE DETAIL  
N.T.S.



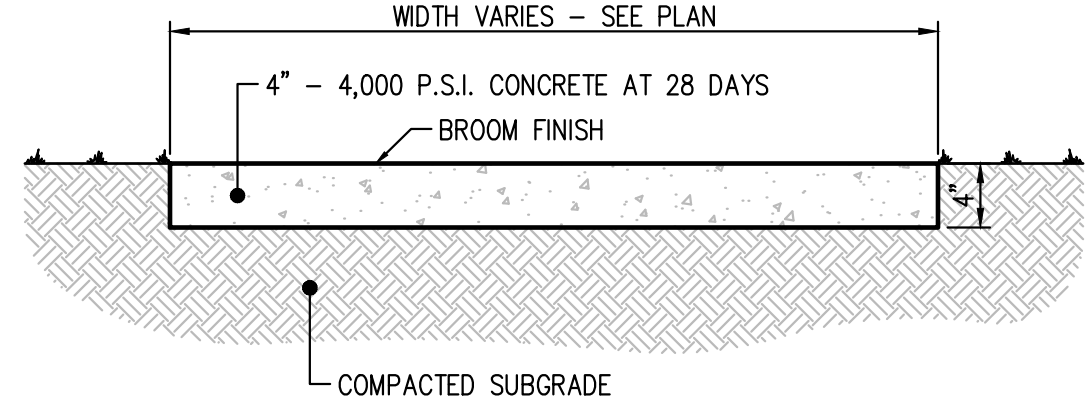
BARRIER FREE SIGN  
N.T.S.



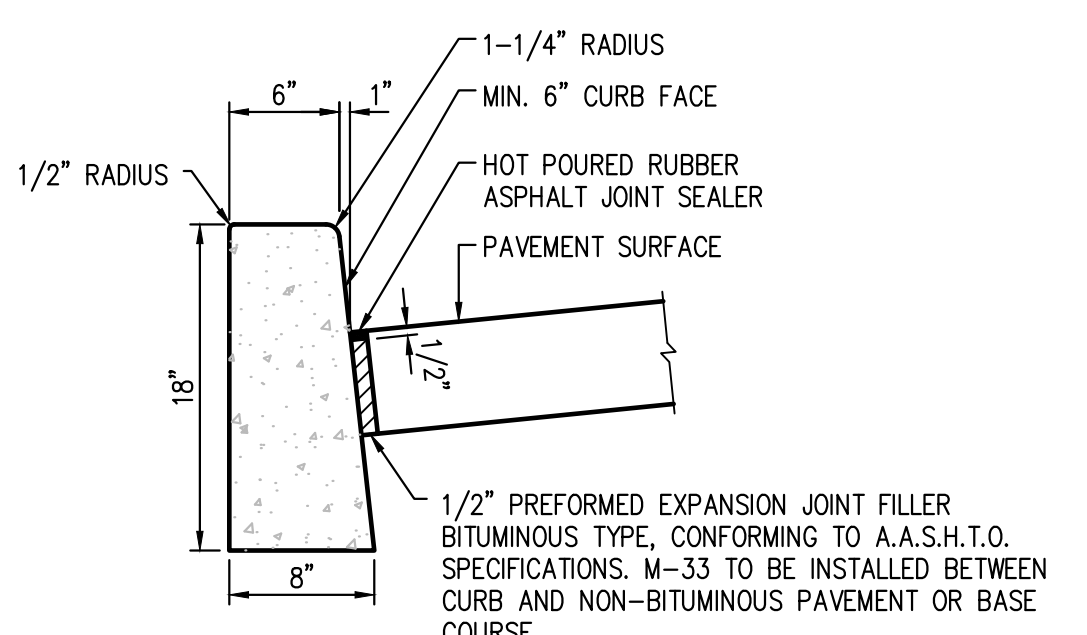
BARRIER FREE SYMBOL  
N.T.S.



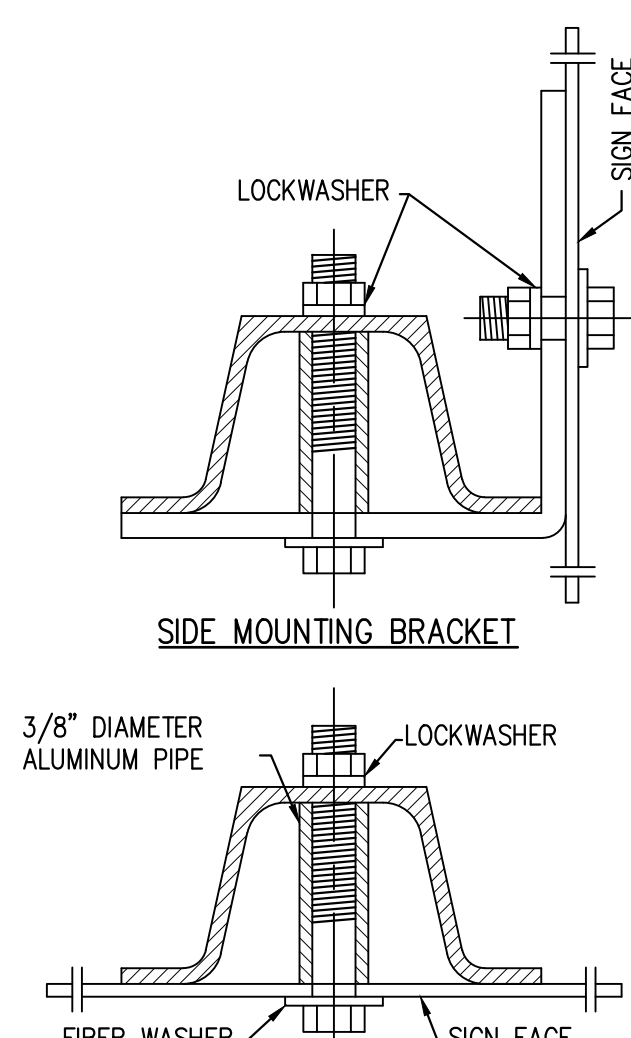
BARRIER FREE PARKING DETAIL  
N.T.S.



CONCRETE SIDEWALK DETAIL  
N.T.S.



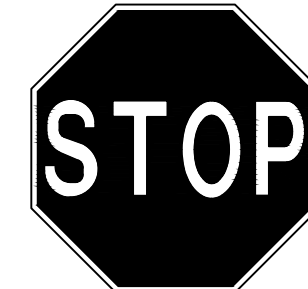
INTERIOR CONCRETE CURB  
N.T.S.



SIGN MOUNTING DETAIL  
N.T.S.



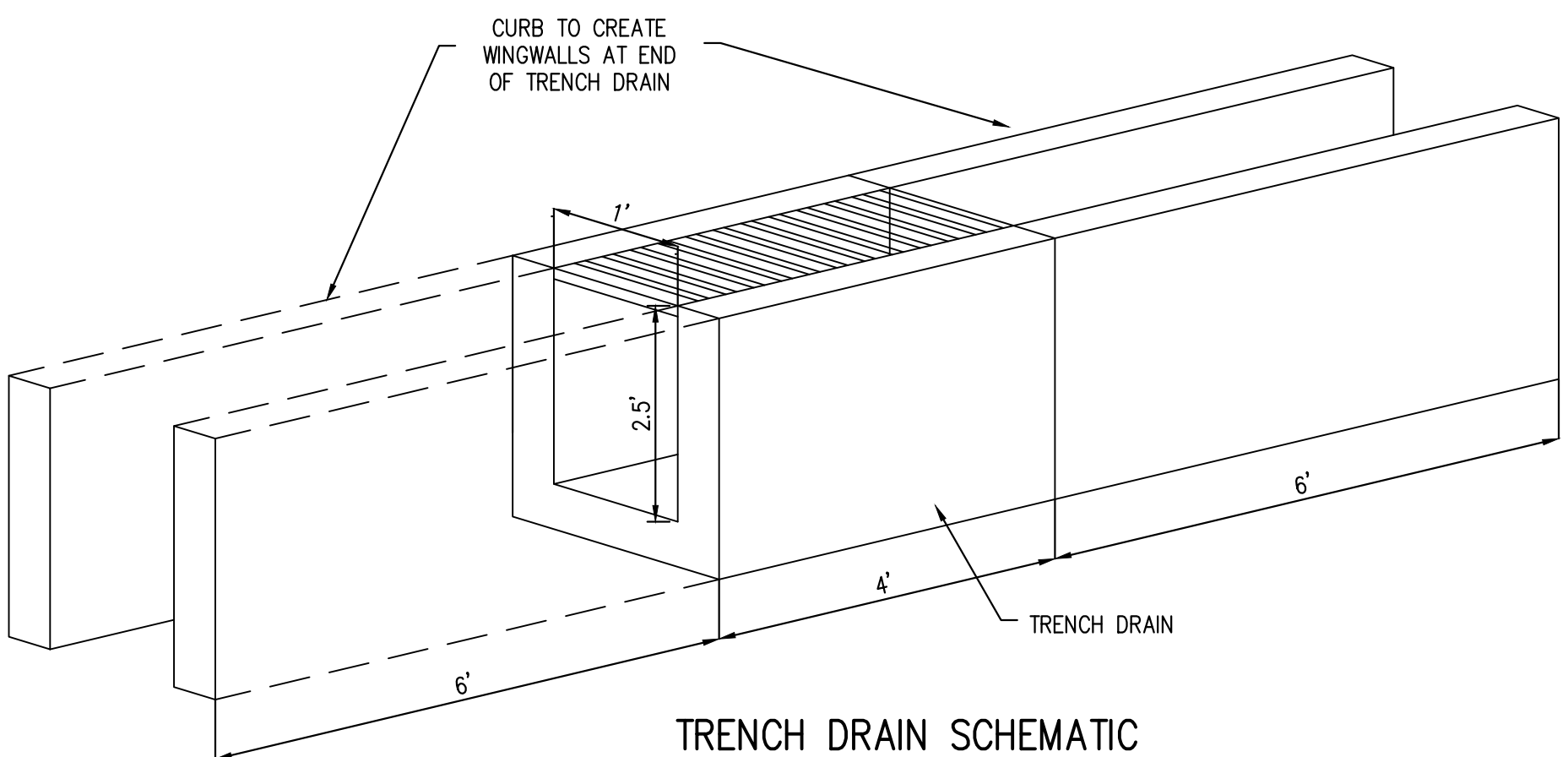
DO NOT ENTER SIGN  
N.T.S.



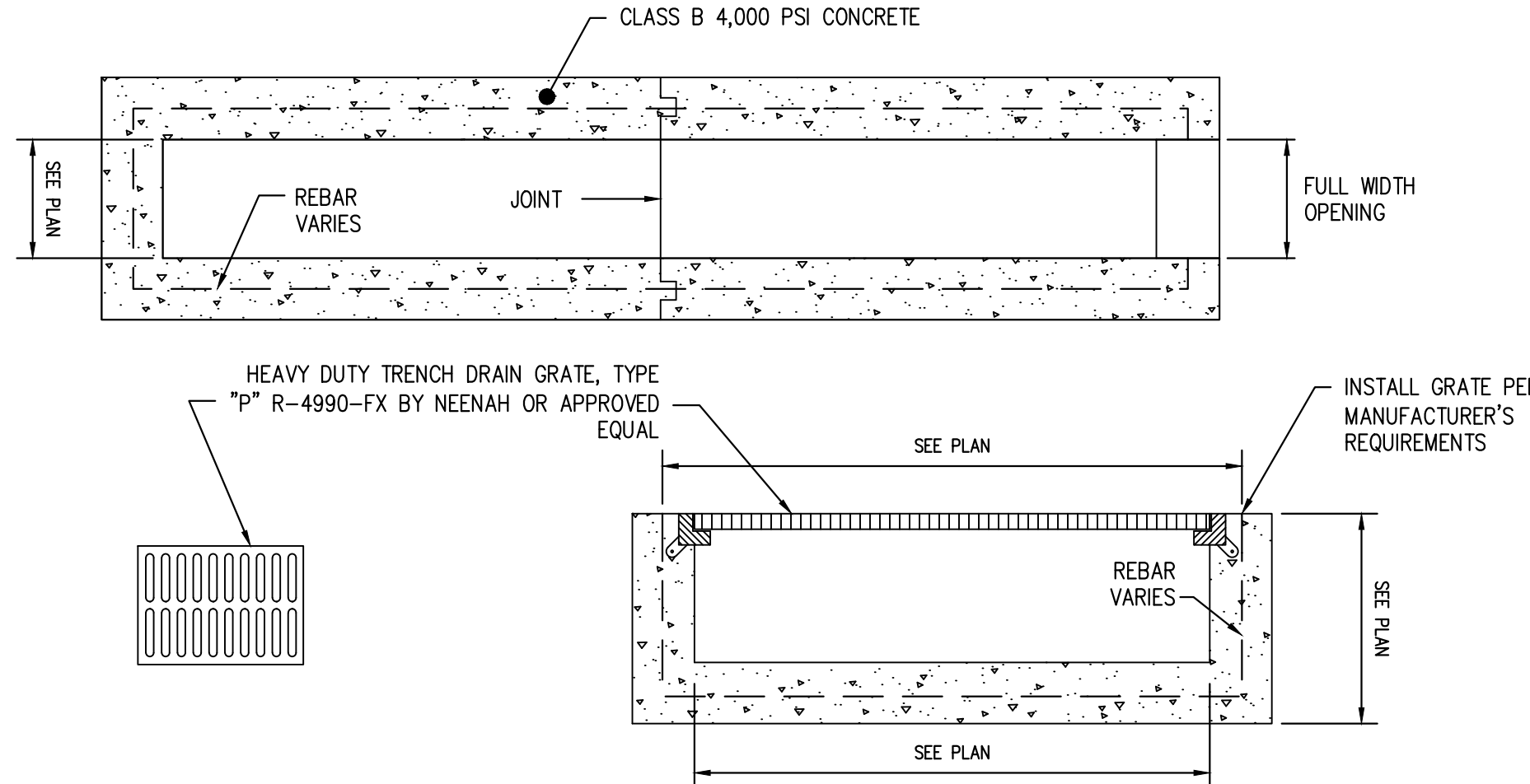
STOP SIGN  
N.T.S.



ONE WAY SIGN  
N.T.S.



TRENCH DRAIN SCHEMATIC  
N.T.S.



TRENCH DRAIN DETAIL  
N.T.S.

ORANGE DEEDS ENTERTAINMENT COMPLEX BLOCK 52, LOTS 11-18 & 30-40 ATLANTIC CITY, ATLANTIC COUNTY, NEW JERSEY		SITE DETAILS	
PAT FASANO 1005 MAIN STREET ASBURY PARK, NEW JERSEY		PAT FASANO 1005 MAIN STREET ASBURY PARK, NEW JERSEY	
PROJECT NO. FAS 001.01	SHEET NO. 7 OF 9	DATE 11/27/2018	ISSUE NO. 1
INITIAL SUBMISSION		SUBMISSION/REVISION	
LAT JTS		BY JTS	
PROJECT NO. FAS 001.01		SHEET NO. C1101	

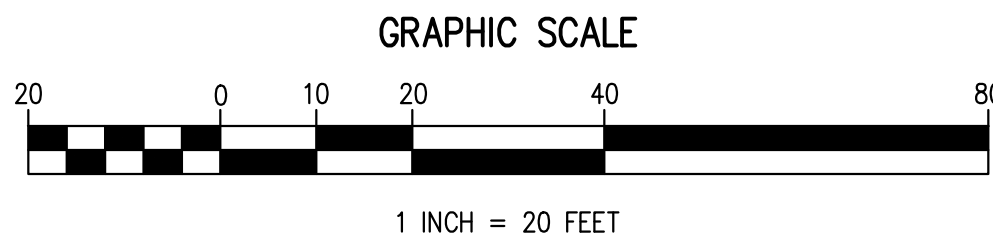
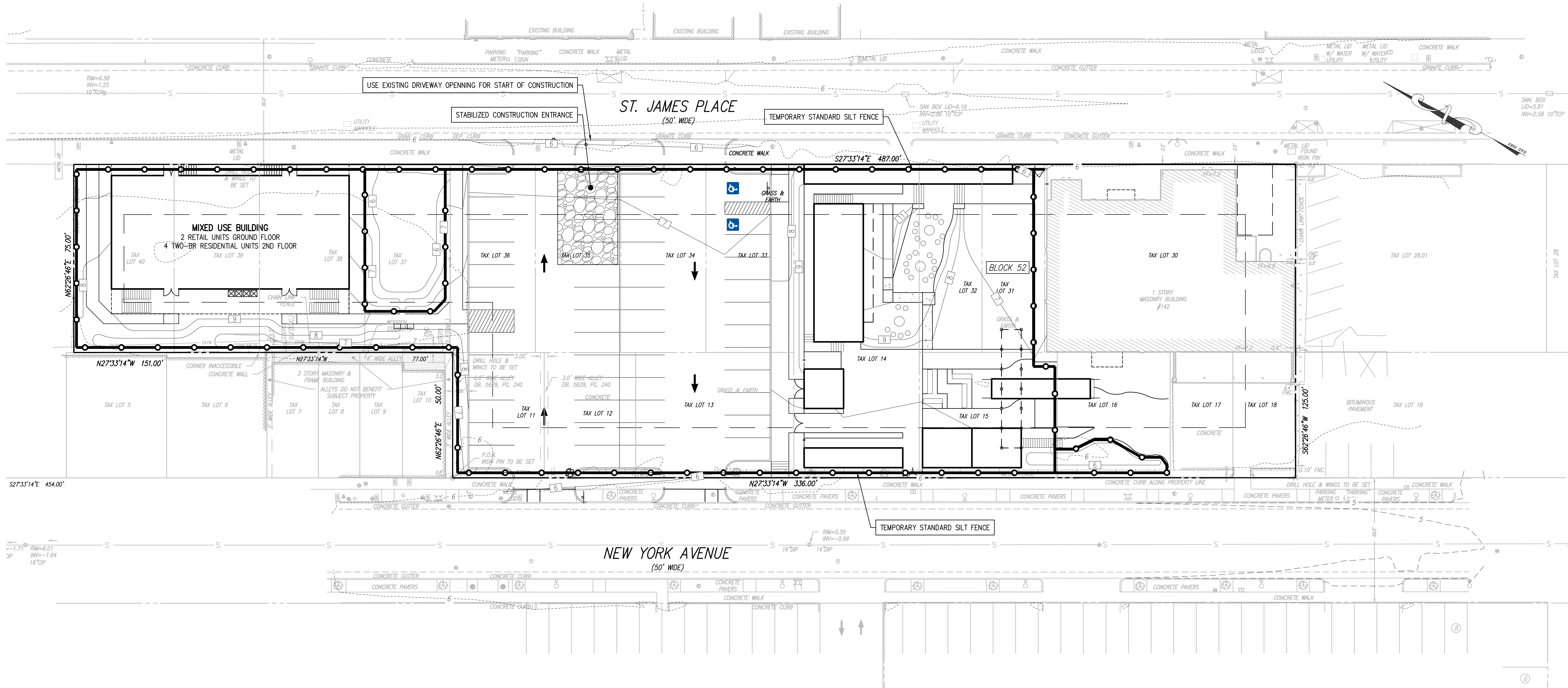
ALL INFORMATION CONTAINED HEREIN IS THE PROPERTY OF SCULLO ENGINEERING SERVICES, LLC AND IS NOT TO BE REPRODUCED OR TRANSMITTED IN ANY FORM OR BY ANY MEANS, ELECTRONIC OR MECHANICAL, INCLUDING PHOTOCOPYING, RECORDING, OR BY ANY INFORMATION STORAGE AND RETRIEVAL SYSTEM. ANY REUSE, MODIFICATION, OR ADAPTATION OF THIS DOCUMENT WITHOUT THE WRITTEN PERMISSION OF SCULLO ENGINEERING SERVICES, LLC IS PROHIBITED. SCULLO ENGINEERING SERVICES, LLC AND ITS AFFILIATES SHALL NOT BE LIABLE FOR ANY DAMAGES, LOSSES, AND EXPENSES ARISING OUT OF OR RESULTING FROM THE USE OF THIS DOCUMENT.

JASON T. SCULLO, P.E., P.P.  
PROFESSIONAL ENGINEER, NEW JERSEY LICENSE NO. 2460468000  
PROFESSIONAL PLANNER, NEW JERSEY LICENSE NO. 3300028400

jc@sculloengineering.com  
jcsculloengineering.com

DATE: 04/11/2018 10:17:28 AM, LAST MODIFIED: 04/11/2018 10:17:28 AM

DATE: 04/11/2018 10:17:28 AM, LAST MODIFIED: 04/11/2018 10:17:28 AM



#### LIMIT OF DISTURBANCE

TOTAL AREA OF PROPOSED DISTURBANCE = 0.948 AC.

#### NOTES

- THIS PLAN IS TO BE USED FOR SOIL EROSION AND SEDIMENT CONTROL PURPOSES ONLY.
- SOIL EROSION AND SEDIMENT CONTROL IMPLEMENTATION SHALL BE IN ACCORDANCE WITH STANDARDS SET FORTH BY THE CAPE ATLANTIC CONSERVATION DISTRICT.
- THIS SITE IS WITHIN THE URBAN REDEVELOPMENT AREA (PREVIOUSLY DEVELOPED SITE WITHIN METROPOLITAN PLANNING AREA PA-1) AND DEVELOPMENT IS EXEMPT FROM COMPACTION MITIGATION STANDARDS.

#### LEGEND

- TEMPORARY STANDARD SILT FENCE/LIMIT OF DISTURBANCE
- TEMPORARY STANDARD SILT FENCE/LIMIT OF DISTURBANCE
- LIMIT OF DISTURBANCE
- SOILS LIMIT LINE
- TEMPORARY STABILIZED CONSTRUCTION ENTRANCE
- TEMPORARY INLET PROTECTION
- SOILS DESIGNATION

#### SOILS DATA

PsaAt PSAMMENTS 0-3% SLOPE "D" SOILS GROUP

SOILS OBTAINED FROM NATURAL RESOURCES CONSERVATION SERVICES (NRCS) U.S. DEPARTMENT OF AGRICULTURE.  
ALL SOIL EROSION AND SEDIMENT CONTROL IMPLEMENTATION SHALL BE IN ACCORDANCE WITH STANDARDS SET FORTH BY THE CAPE ATLANTIC SOIL CONSERVATION DISTRICT.



9615 VENTNOR AVENUE, SUITE 3  
MARGATE, NEW JERSEY 08402  
PHONE: (609) 300-5171  
WWW.SCILLOENGINEERING.COM  
NJ CERTIFICATE OF AUTHORIZATION NO. Z-64-03020700

ORANGE DEEDS ENTERTAINMENT COMPLEX  
BLOCK 52, LOTS 11-18 & 30-40  
ATLANTIC CITY, ATLANTIC COUNTY, NEW JERSEY

SOIL EROSION & SEDIMENT CONTROL PLAN

PAT FASANO  
1005 MAIN STREET  
ASBURY PARK, NEW JERSEY

DATE	ISSUE NO.	1	INITIAL SUBMISSION	SUBMISSION/REVISION	LAT	JTS	BY	APPR.
11/27/2018								

PROJECT NO. FAS 001.01  
SCALE: 1" = 20'  
SHEET 8 OF 9  
C1201



Know what's below.  
Call before you dig.

- EXISTING UTILITY INFORMATION SHOWN ON THESE PLANS IS FURNISHED BY THE UTILITY COMPANIES AND/OR THE SURVEYOR AND THE ACCURACY THEREOF IS NOT THE RESPONSIBILITY OF SCILLO ENGINEERING SERVICES, LLC. IT IS THE RESPONSIBILITY OF THE OWNERS AND/OR CONTRACTOR TO CALL 1-800-272-1000 FOR FIELD LOCATION OF UNDERGROUND UTILITIES PRIOR TO CONSTRUCTION.
- THESE PLANS ARE NOT FOR CONSTRUCTION UNTIL "ISSUED FOR CONSTRUCTION" APPEARS IN THE TITLEBLOCK.

