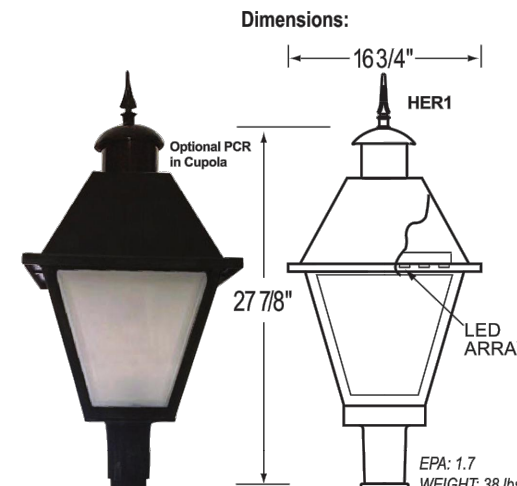


LIGHTING NOTES

1. LIGHTING LEVELS SHOWN ARE AS PROVIDED BY LIGHTING MANUFACTURER & ARE IN FOOTCANDLES (FC).



RADIANT LED POST TOPS



Specifications and Features:

- Radiant™ LED**
- Conformal Coating LED light engine
- CCT: 3000, 4000, 5000
- IP66
- Optical**
- Type II, II, II, V
- Electrical**
- Electronic Driver, 120-277V, 50/60Hz or 347/480V, 50/60Hz
- Dimmable Driver
- Surge Protection INCLUDED
- surge protection device meets IEEE C62.41 2002 C High 10kA
- Controls**
- Button eye photo control (PC)
- 7-pin twist-lock receptacle (PCRT) - mounts on top with GF26 (X)
- Housing**
- Cast aluminum cage, roof and filter*
- Finish**
- Super durable powder coat finish over a chromate conversion coating. Custom finishes available, including patinas and all RAL colors
- Listings & Ratings**
- ETL listed to UL 1598 standard for wet location and IP66
- Warranty**
- 5 year limited warranty

ORDERING FORMAT

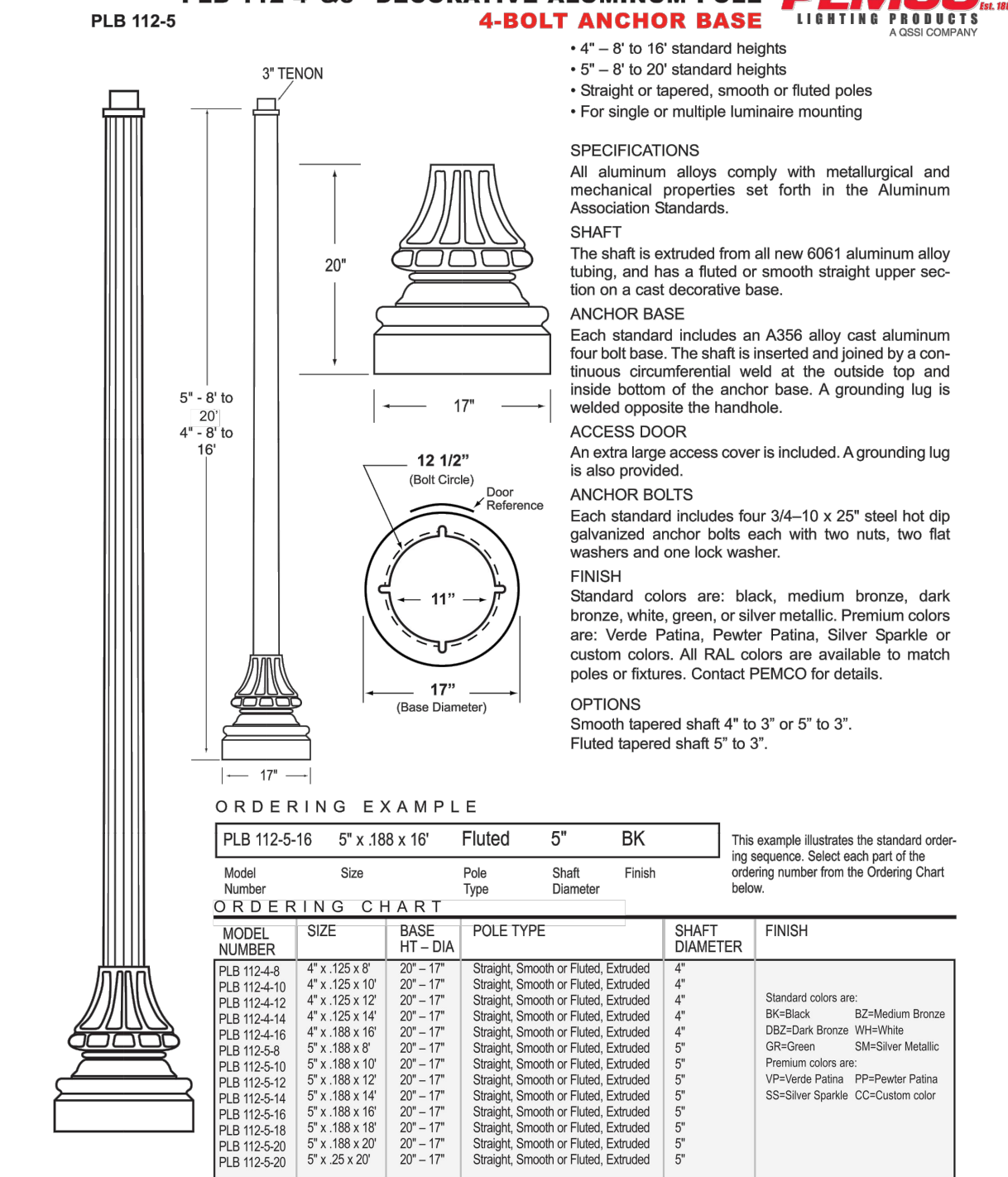
Example: HER1-CA-70W4K-U-5-X -SF3-PCRT-BK

HER1	CA-70W4K-U-5-X	SF3-PCRT-BK
HER1-1	CA-70W4K-U-5-X	SF3-PCRT-BK
HER1-2	CA-70W4K-U-5-X	SF3-PCRT-BK
HER1-3	CA-70W4K-U-5-X	SF3-PCRT-BK
HER1-4	CA-70W4K-U-5-X	SF3-PCRT-BK
HER1-5	CA-70W4K-U-5-X	SF3-PCRT-BK
HER1-6	CA-70W4K-U-5-X	SF3-PCRT-BK
HER1-7	CA-70W4K-U-5-X	SF3-PCRT-BK
HER1-8	CA-70W4K-U-5-X	SF3-PCRT-BK
HER1-9	CA-70W4K-U-5-X	SF3-PCRT-BK
HER1-10	CA-70W4K-U-5-X	SF3-PCRT-BK
HER1-11	CA-70W4K-U-5-X	SF3-PCRT-BK
HER1-12	CA-70W4K-U-5-X	SF3-PCRT-BK
HER1-13	CA-70W4K-U-5-X	SF3-PCRT-BK
HER1-14	CA-70W4K-U-5-X	SF3-PCRT-BK
HER1-15	CA-70W4K-U-5-X	SF3-PCRT-BK
HER1-16	CA-70W4K-U-5-X	SF3-PCRT-BK
HER1-17	CA-70W4K-U-5-X	SF3-PCRT-BK
HER1-18	CA-70W4K-U-5-X	SF3-PCRT-BK
HER1-19	CA-70W4K-U-5-X	SF3-PCRT-BK
HER1-20	CA-70W4K-U-5-X	SF3-PCRT-BK

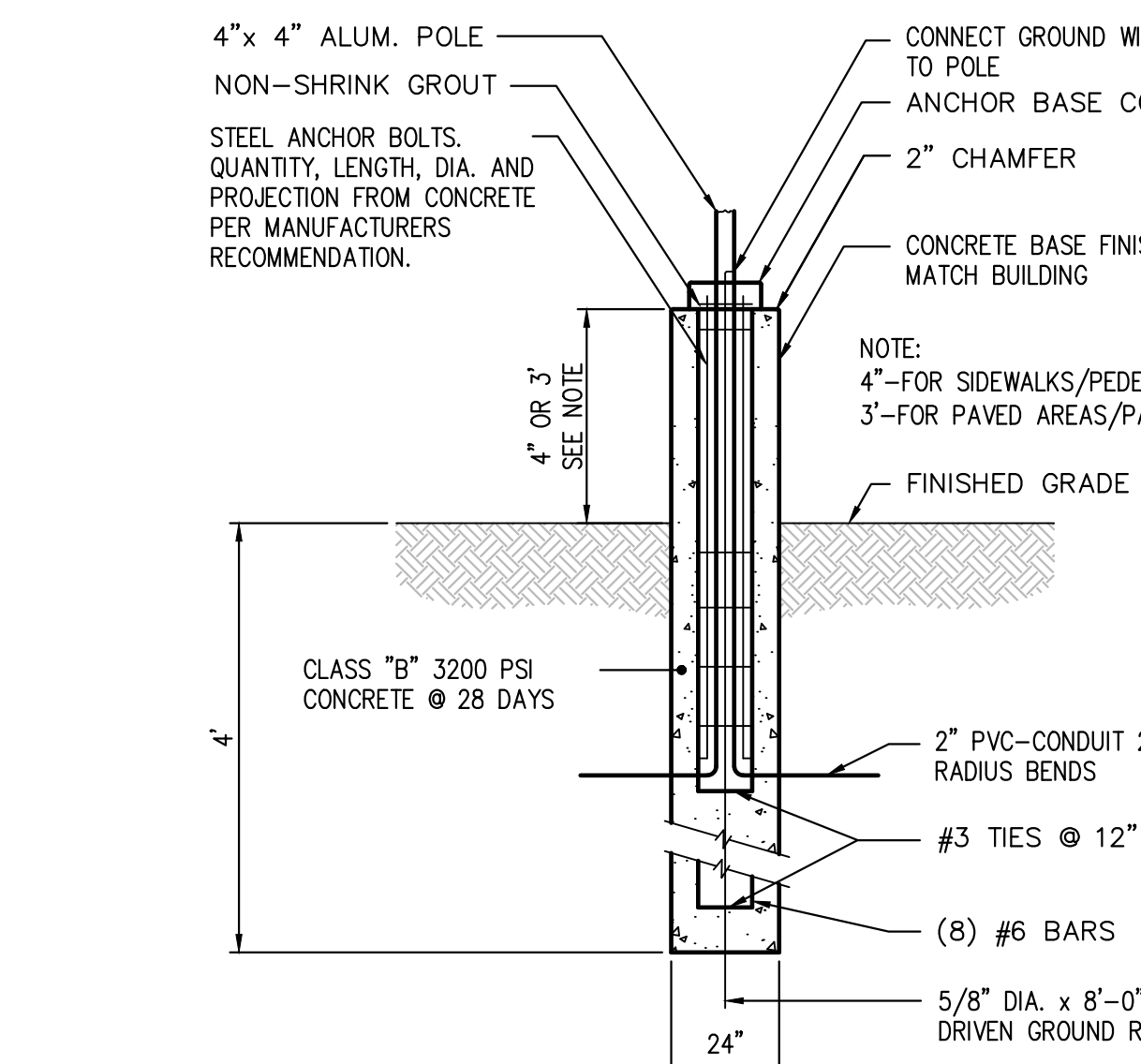
PEMCO Lighting Products 150 Penno Way-Wilmington, DE 19804 Phone 302.892.8000 Fax 302.892.8005 www.pemcoledlighting.com info@pemcoledlighting.com Her1(10/18)

Aluminum

PLB 112-4" & 5" DECORATIVE ALUMINUM POLE

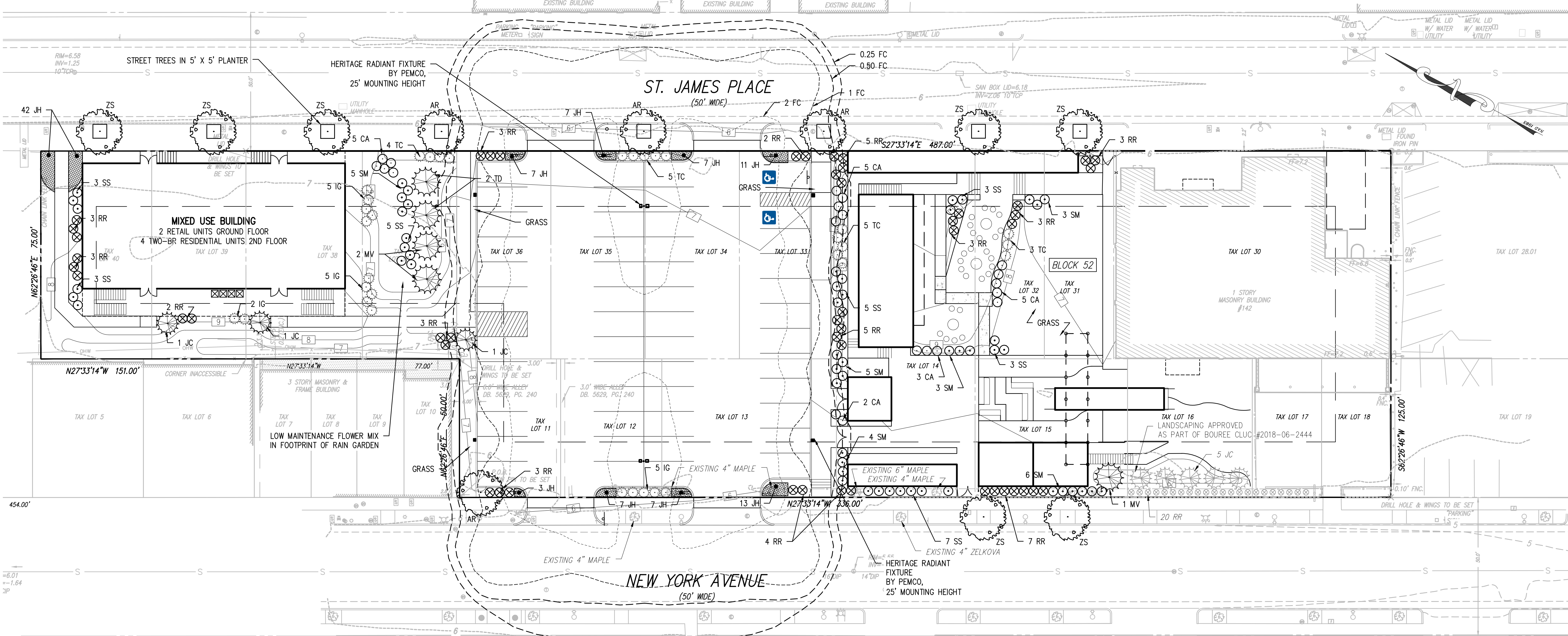


AA-020119 PEMCO Lighting Products 150 Penno Way-Wilmington, DE 19804 Phone 302.892.8000 Fax 302.892.8005 www.pemcoledlighting.com info@pemcoledlighting.com



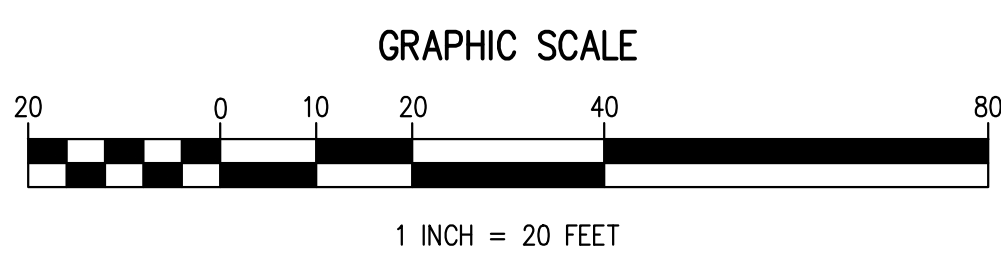
RAISED LIGHT POLE BASE DETAIL

N.T.S.



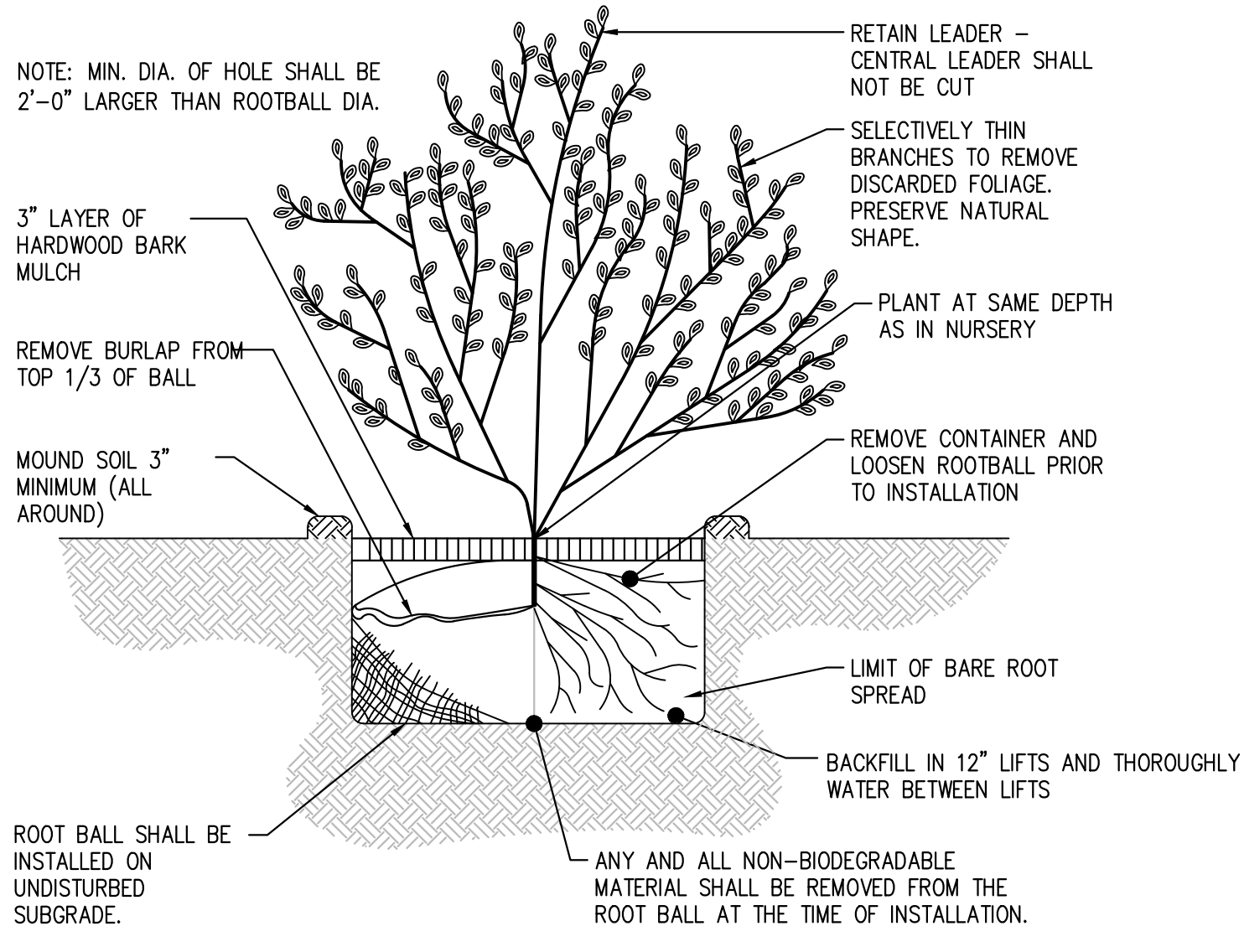
PLANT MATERIAL	REQUIRED	PROPOSED	STATUS
STREET TREES	1 PER 40' FRONTAGE = 673' / 40' = 17 (SEE NOTE 1)	17 (6 EXISTING & 11 PROPOSED)	CONFORMS
SHADE TREES IN PARKING LOT	1 PER 10 SPACES; 51 SPACES = 5	5	CONFORMS
STREET SHRUBS	5 PER 40' OF FRONTAGE = 673' / 40' x 5 = 84	58	DNC (SEE NOTE 2)
SHRUBS IN PARKING LOT	5 PER 10 SPACES; 81 SPACES = 25.5	50'	CONFORMS

(1) THE LENGTH OF FRONTAGE FOR THE PORTION OF THE LOT TO BE IMPROVED ALONG ST. JAMES PLACE = 387' & NEW YORK AVE = 286' FOR A TOTAL OF 673'.
(2) DUE TO ROAD FRONTAGE TAKEN UP BY BUILDINGS, SHRUBS CAN NOT BE PUT ALONG THE STREET. THE TOTAL AMOUNT OF ORNAMENTAL GRASSES AND SHRUBS ON SITE EXCEED THOSE REQUIRED IN THE PARKING LOT & ALONG THE STREET (84+25.5 = 109.5 REQUIRED; 157 PROPOSED).



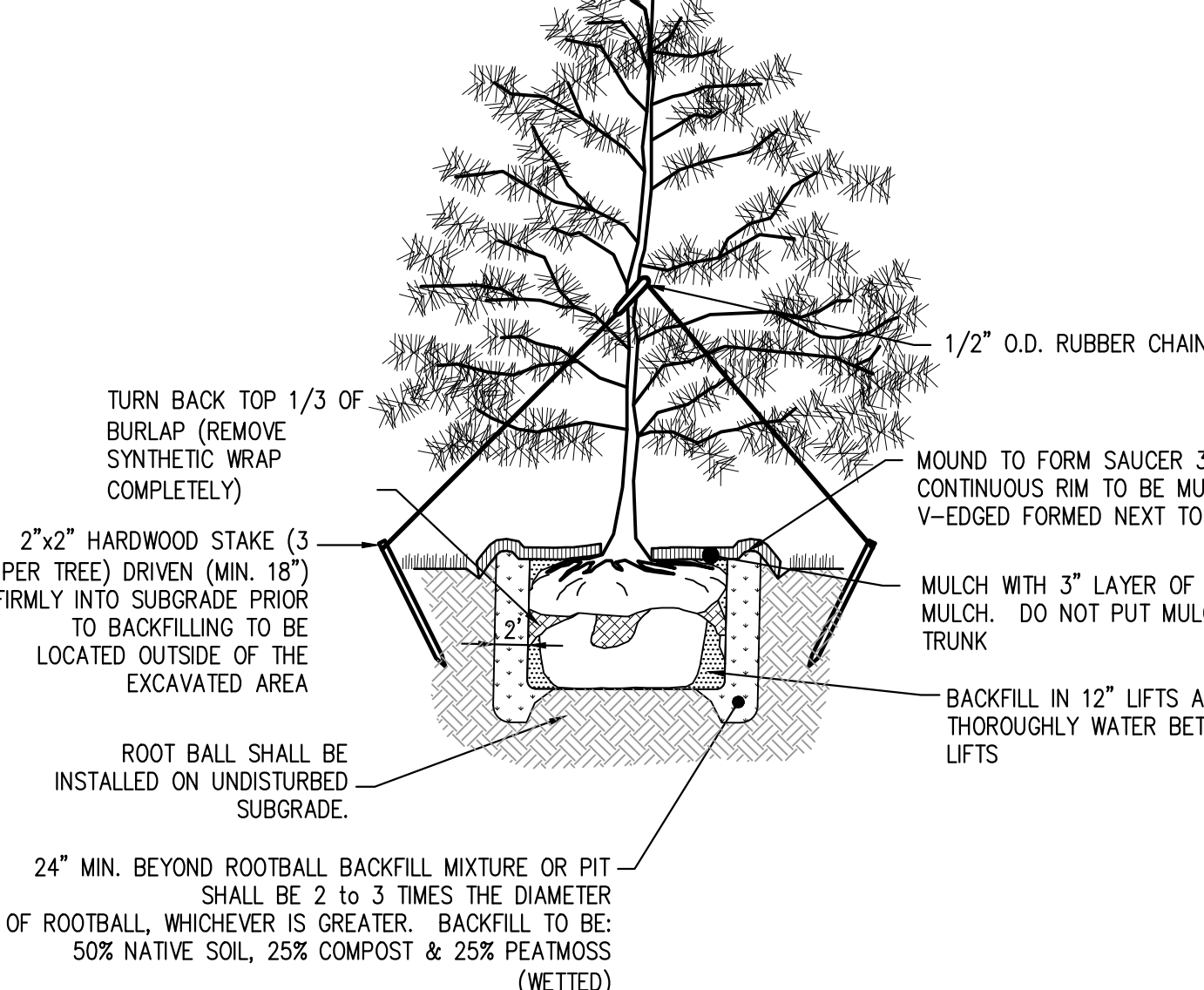
NOTES:

- DIAMETER OF HOLE SHALL BE A MINIMUM OF 2'-0" LARGER THAN ROOTBALL DIAMETER OR 2 TO 3 TIMES THE DIAMETER OF ROOTBALL, WHICHEVER IS LARGER. A LARGER DIAMETER SHALL BE PROVIDED IN POORLY DRAINING SOIL, COMPACTED SOILS, OR URBAN CONDITIONS.
- EVERGREEN TREES UNDER 4'-6" HEIGHT DO NOT REQUIRE GUYING AND STAKING
- TOP OF ROOTBALL SHALL BE SET A MAXIMUM OF 1'-3" ABOVE FINISHED GRADE TO ALLOW FOR SETTLING AND THE ROOTBALL SHALL BE PARTIALLY VISIBLE. TOP OF ROOTBALL ELEVATION SHALL NEVER BE PLACED BELOW FINISHED GRADE.



SHRUB DETAIL

N.T.S.



EVERGREEN TREE DETAIL

N.T.S.

LANDSCAPE SCHEDULE					
KEY	QUANTITY	BOTANICAL NAME	COMMON NAME	SIZE	COMMENTS
DECIDUOUS TREES					
AR	4	ACER RUBRUM	RED MAPLE	10' - 12'	B & B
ZS	7	ZELKOVA SERRATA	JAPANESE ZELKOVA	10' - 12'	B & B
EVERGREEN TREES					
JC	3	JUNIPERUS CHINENSIS	HOLLYWOOD JUNIPER	5' - 6' HT	B & B
TD	2	TAXODIUM DISTICHUM	BALD CYPRESS	8' - 10' HT	B & B
MV	3	MAGNOLIA VIRGINIANA	SWEETBAY MAGNOLIA	10' - 12' HT	B & B
DECIDUOUS SHRUBS					
RR	48	ROSA RADRAZZ	KNOCKOUT ROSE	18" - 24" HT	No. 2 CAN
EVERGREEN SHRUBS					
TC	17	TAXUS CUSPIDATA	SPREADING YEW	18" - 24" HT	No. 2 CAN
IG	17	ILEX GLABRA	INKBERRY HOLLY	2' - 3' HT	No. 2 CAN
ORNAMENTAL GRASSES					
CA	20	CALAMAGROSTIS ACUTIFLORA	FEATHER REED GRASS	6" - 12" HT	CONTAINER
SS	29	SCHIZACHYRIUM SCOPARIUM	LITTLE BLUESTEM	6" - 12" HT	CONTAINER
SM	26	SORGHASTRUM NUTANS	INDIANGRASS	6" - 12" HT	CONTAINER
GROUND COVER					
JH	104	JUNIPERUS HORIZONTALIS	BAR HARBOR JUNIPER	6" - 12"	CONTAINER 3' O.C.

LIGHTING SCHEDULE							
SYM.	QTY	MODEL NUMBER	LENS	LED MODEL NUMBER	VOLTAGE	IES DIST.	OPTIONS FINISH
☉	2	DAN	FL	80W60C3K	UNIVERSAL	TYPE III	PC BK

ORANGE DEEDS ENTERTAINMENT COMPLEX

BLOCK 52, LOTS 11-18 & 30-40
ATLANTIC CITY, ATLANTIC COUNTY, NEW JERSEY

LANDSCAPE & LIGHTING PLAN

PAT FASANO
1005 MAIN STREET
ASBURY PARK, NEW JERSEY

PROJECT NO. FAS 001.01
SCALE: 1" = 20'

SHEET 6 OF 9
C0501

DATE 11/27/2018

ISSUE NO. 1

INITIAL SUBMISSION

DATE 11/27/2018

BY JTS

APPR. BY JTS

ALL DRAWINGS AND SPECIFICATIONS ARE THE PROPERTY OF SCULLO ENGINEERING SERVICES, LLC AND ARE NOT TO BE REPRODUCED OR TRANSMITTED IN ANY FORM OR BY ANY MEANS, ELECTRONIC OR MECHANICAL, INCLUDING PHOTOCOPYING, RECORDING, OR BY ANY INFORMATION STORAGE AND RETRIEVAL SYSTEM. ANY UNAUTHORIZED REPRODUCTION OR TRANSMISSION OF ANY PART OF THIS DOCUMENT IS STRICTLY PROHIBITED. ANY PERSON WHO VIOLATES THIS NOTICE SHALL BE LIABLE FOR ALL DAMAGES, LOSSES AND EXPENSES ARISING OUT OF OR RESULTING THEREFROM.

JASON T. SCULLO, P.E., P.P.
PROFESSIONAL ENGINEER, NEW JERSEY LICENSE NO. 2460468000
PROFESSIONAL PLANNER, NEW JERSEY LICENSE NO. 3300628400

sculloengineering.com

SCULLO ENGINEERING SERVICES, LLC

9615 VENTNOR AVENUE, SUITE 3
MARGATE, NEW JERSEY 08402
PHONE: (609) 300-5171
www.sculloengineering.com

ALL CERTIFICATE OF AUTHORIZATION NO. 2460468000