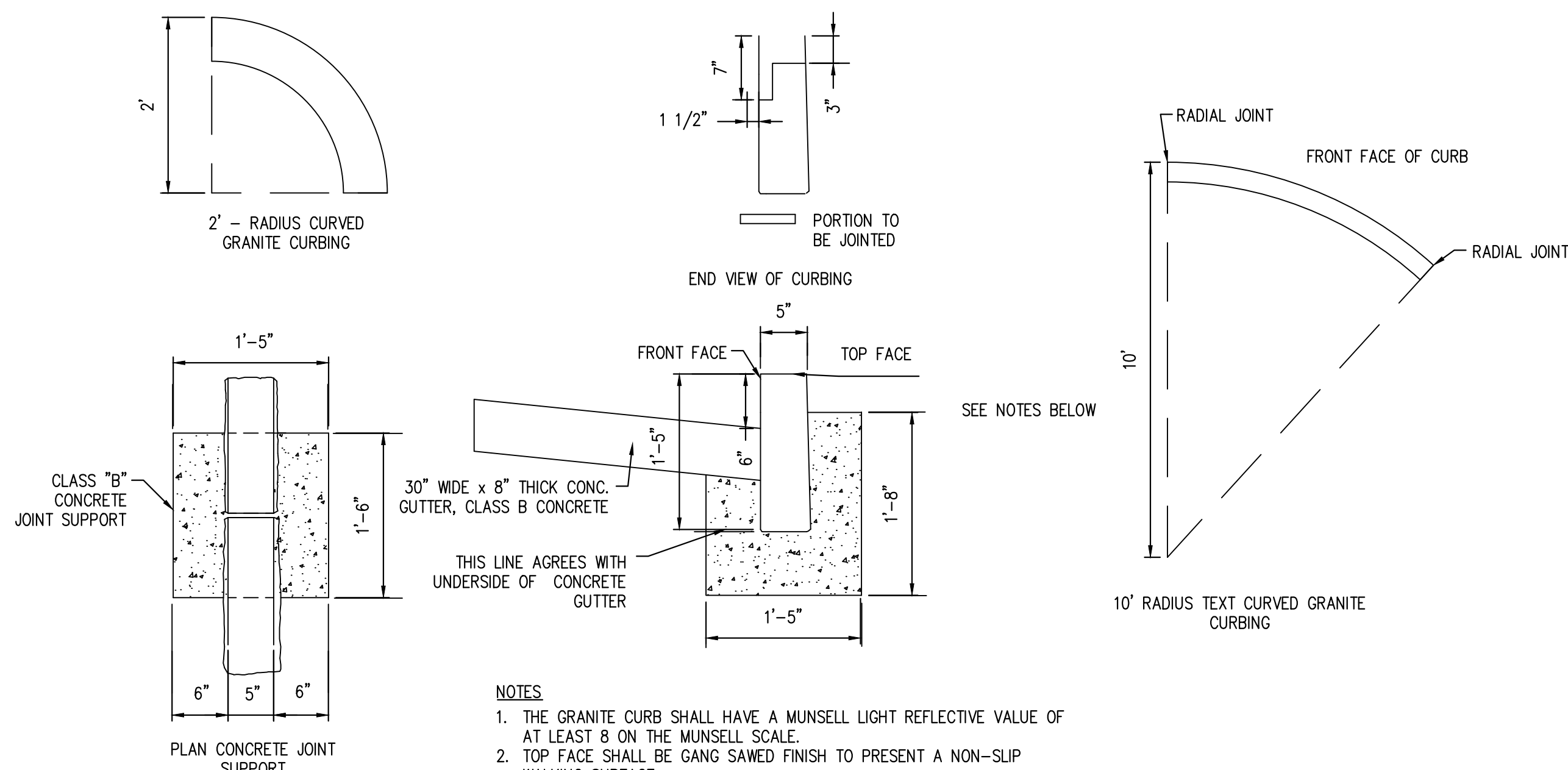


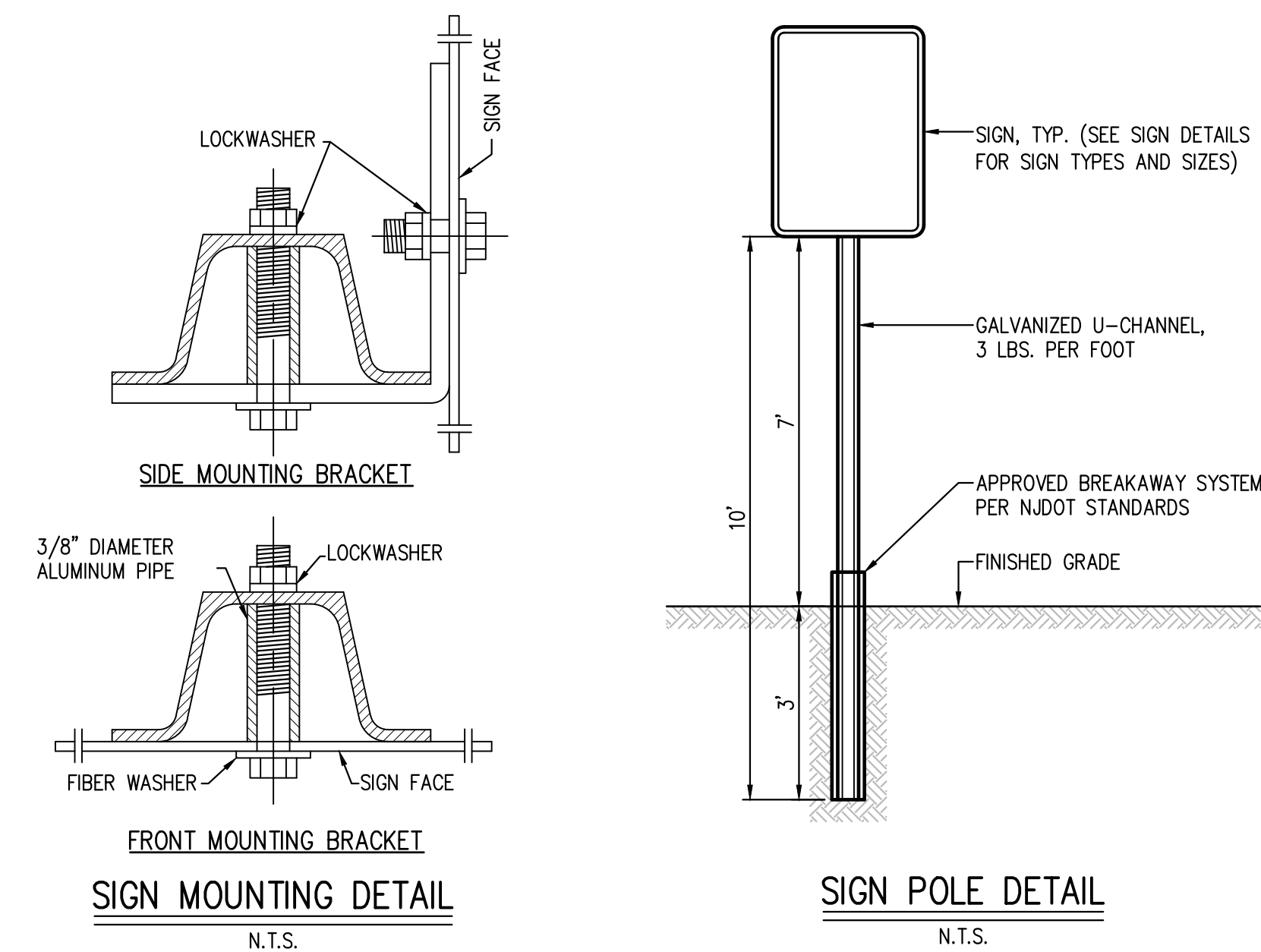
DRIVEWAY APRON DETAIL

N.T.S.



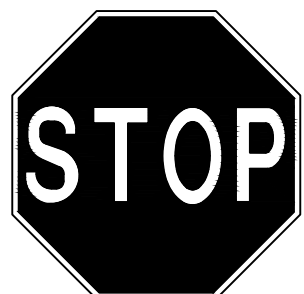
GRANITE CURB DETAIL

N.T.S.



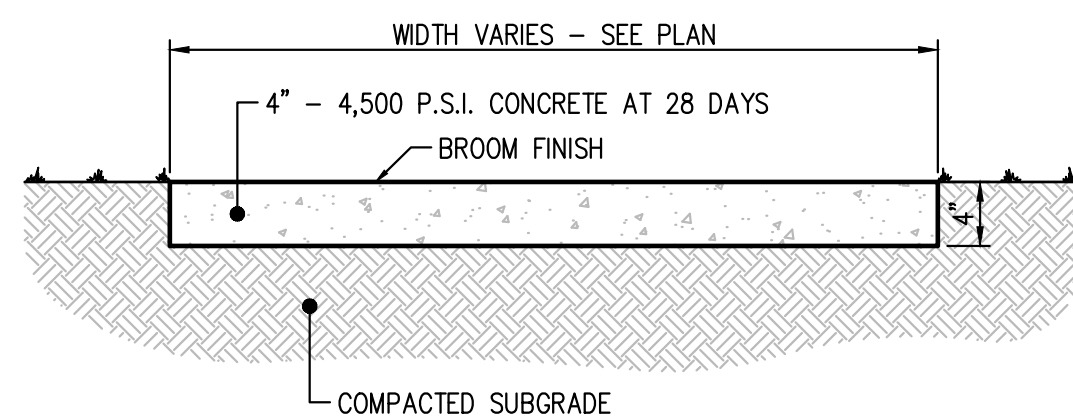
SIGN POLE DETAIL

N.T.S.



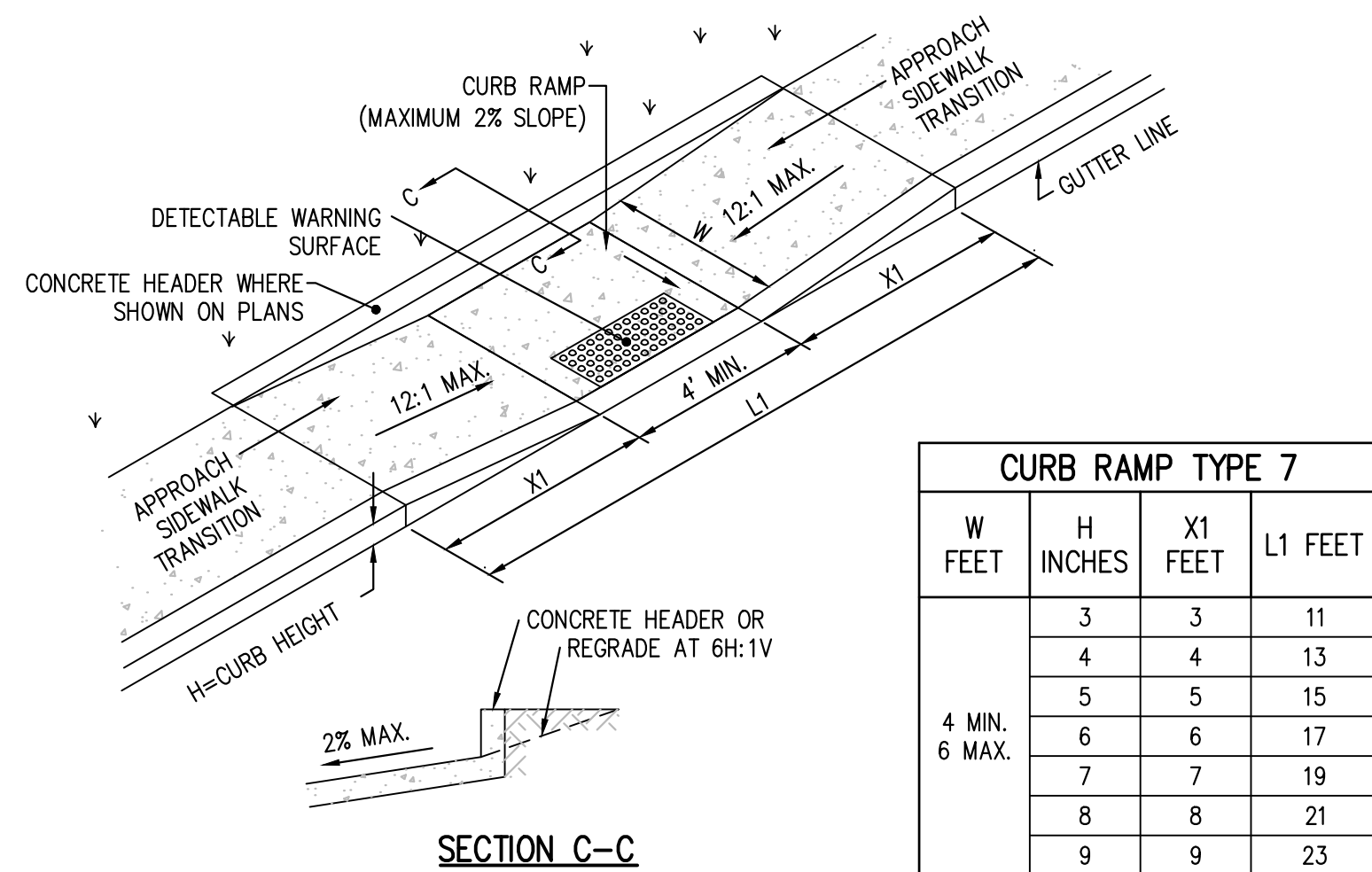
NOTE:  
SIGNAGE TO CONFORM WITH THE LATEST EDITION OF  
STANDARD SIGNS FHA MUTCD. ALL SIGNS SHALL BE  
MOUNTED ON BREAKAWAY SIGN POSTS.

STOP SIGN  
N.T.S.

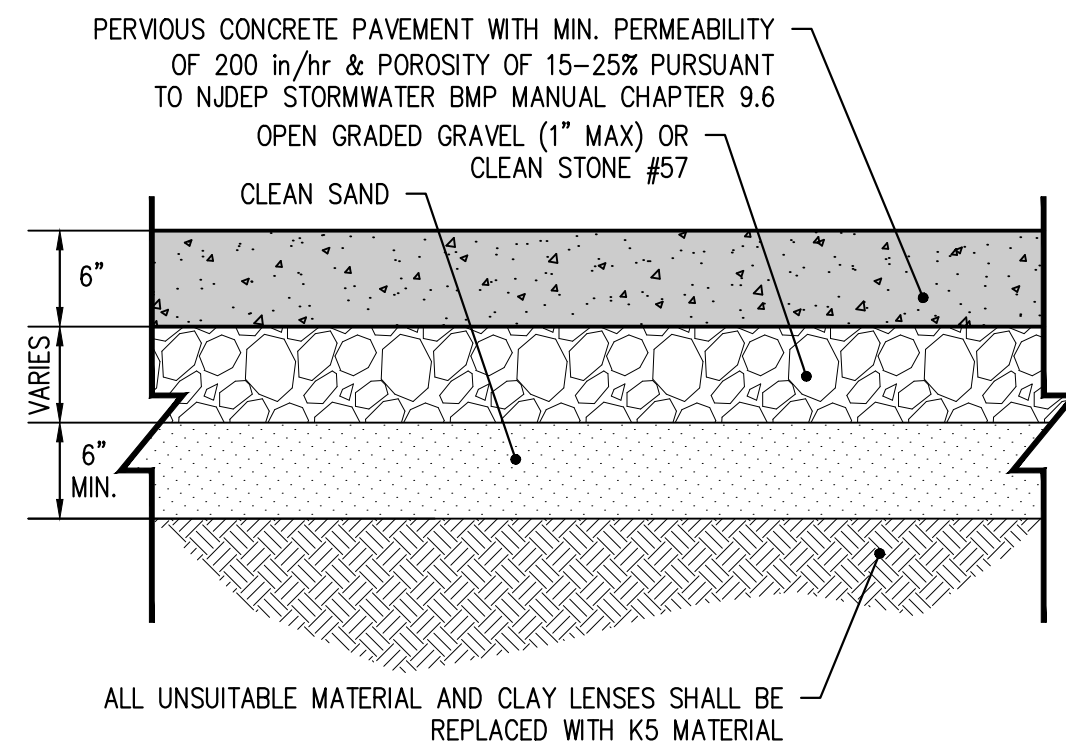


- NOTES:
1. SIDEWALK SHALL BE MINIMUM 4' WIDE AND 4" THICK
  2. EXPANSION JOINTS SHALL BE 1/2" WIDE AND PROVIDED AT INTERVALS NO GREATER THAN 20 FEET AND SHALL BE FILLED WITH 1/2" THICK CELLULAR COMPRESSION MATERIAL TO WITHIN 1/4" OF TOP OF WALK.
  3. SURFACE GROOVES SHALL BE CUT AT LEAST 1/4" DEEP AT RIGHT ANGLES TO THE LINE OF SIDEWALK AND AT INTERVALS EQUAL TO SIDEWALK WIDTH.
  4. SURFACE EDGES SHALL BE ROUNDED TO 1/2" RADIUS.
  5. FINISH SHALL BE WOOD FLAT, FOLLOWED BY BROOMING TO A NEAT, WORKMANLIKE SURFACE.

CONCRETE SIDEWALK DETAIL



N.J.DOT CURB RAMP TYPE VI



- ## NOTES:
1. IF REQUIRED FOR ADDED STRENGTH, THE PERCENTAGE AND TYPE OF SYNTHETIC FIBERS OR QUANTITY OF FINE SAND REQUIRED IN THE MIX MUST BE SPECIFIED AND TESTING MUST BE IN ACCORDANCE WITH CURRENT PERVIOUS CONCRETE INDUSTRY STANDARDS.
  2. THE AIR TEMPERATURE MUST BE ABOVE 32 DEGREES FAHRENHEIT ON THE DAY OF PLACEMENT AND FOR SEVEN CALENDAR DAYS PRIOR.
  3. FINISHING TECHNIQUES, SUCH AS FLOATING OR TROWLING MUST NOT BE USED, BECAUSE THIS WOULD CLOSE THE SURFACE VOIDS OF THE CONCRETE.
  4. COVERING PERVIOUS CONCRETE WITH PLASTIC SHEETING DURING CURING IS REQUIRED, AS IT PROHIBITS MOISTURE LOSS IN THE CONCRETE MIX. PLASTIC SHEETING PLACEMENT MUST CONFORM TO INDUSTRY STANDARDS FOR TIMING AND DURATION. WHILE THE PLASTIC SHEETING IS IN PLACE, THE PERVIOUS CONCRETE MUST BE BLOCKED OFF FROM PEDESTRIAN OR VEHICULAR TRAFFIC.
  5. POST-CONSTRUCTION TESTING OF THE PERVIOUS CONCRETE SURFACE COURSE IS REQUIRED AND MUST CONFORM TO THE METHODS OF ASTM C1701: STANDARD TEST METHOD FOR INFILTRATION RATE OF INPLACE PERVIOUS CONCRETE, ON THE DAY THE PLASTIC SHEETING IS REMOVED. AT LEAST THREE LOCATIONS MUST BE USED FOR THE TEST, AND THEY SHOULD BE SPACED EVENLY ACROSS THE PERVIOUS PAVING SYSTEM FAILURE TO ACHIEVE THE MINIMUM DESIGN INFILTRATION RATE OF THE SURFACE COURSE AT ONE OR MORE LOCATION INDICATES THE SYSTEM CANNOT BE PUT IN SERVICE UNTIL THE SYSTEM IS CORRECTED TO YIELD ALL PASSING VALUES. UNLIKE THE TEST METHODOLOGY OUTLINED IN THE ASTM STANDARDS, THE TEST RESULTS MUST NOT BE AVERAGED. THE MAINTENANCE PLAN MUST INCLUDE A LOG FOR RECORDING EACH LOCATION AND ITS TEST RESULT FOR FUTURE REFERENCE.

PERVIOUS CONCRETE PAVEMENT DETAIL



**Know what's below.  
Call before you dig.**

1. EXISTING UTILITY INFORMATION SHOWN ON THESE PLANS IS FURNISHED BY THE UTILITY COMPANIES AND/OR THE SURVEYOR AND THE ACCURACY THEREOF IS NOT THE RESPONSIBILITY OF SCIULLO ENGINEERING SERVICES, LLC. IT IS THE RESPONSIBILITY OF THE OWNERS AND/OR CONTRACTOR TO CALL 1-800-272-1000 FOR FIELD LOCATION OF UNDERGROUND UTILITIES PRIOR TO CONSTRUCTION.
2. THESE PLANS ARE NOT FOR CONSTRUCTION UNTIL "ISSUED FOR CONSTRUCTION" APPEARS IN THE TITLEBLOCK.

DOCUMENTS PREPARED BY SCIULLO ENGINEERING SERVICES, LLC ARE INSTRUMENTS OF SERVICE IN RESPECT TO THE PROJECT. THEY ARE NOT INTENDED OR REPRESENTED TO BE SUITABLE FOR REUSE BY OWNER TO EXTENSIONS OF THE PROJECT OR ON ANY OTHER PROJECT. REUSE WITHOUT WRITTEN VERIFICATION OR ADAPTATION BY SCIULLO ENGINEERING SERVICES, LLC FOR ANY SPECIFIC PURPOSE IS INTENDED TO BE AT THE USER'S SOLE RISK AND WITHOUT WARRANTY. SCIULLO ENGINEERING SERVICES, LLC DOES NOT WARRANT, REPRESENT, OR GUARANTEE, EXPRESSLY OR IMPLY, THAT THE INFORMATION CONTAINED HEREIN IS ACCURATE, COMPLETE, TIMELY, OR FREE FROM OMISSIONS, ERRORS, GAPS, LOSSES, OR RESULTING THEREFROM.

**JASON T. SCIULLO, P.E., P.P.**  
PROFESSIONAL ENGINEER, NEW JERSEY LICENSE NO. 24GE04586000  
PROFESSIONAL PLANNER, NEW JERSEY LICENSE NO. 33J00628400

iscillio@sciulloengineering.com

**SE** | **SCIULLO**  
ENGINEERING  
SERVICES, LLC

137 S. NEW YORK AVENUE, SUITE 2  
ATLANTIC CITY, NEW JERSEY 08401  
PHONE: (609) 300-5171

UJ CERTIFICATE OF AUTHORIZATION NO. 24GA28290700

# SOUTHEAST INLET RESIDENTIAL TOWNHOMES

## PRELIMINARY AND FINAL SUBDIVISION & SITE PLANS

BLOCKS 73, 74, 76 & 78, MULTIPLE LOTS  
ATLANTIC CITY, ATLANTIC COUNTY, NEW JERSEY

BLOCKS 73, 74, 76 & 78, MULTIPLE LOTS  
ATLANTIC CITY, ATLANTIC COUNTY, NEW JERSEY

BLOCKS 73, 74, 76 & 78, MULTIPLE LOTS  
ATLANTIC CITY, ATLANTIC COUNTY, NEW JERSEY

## SITE DETAILS

INLET AC PARTNERS LLC

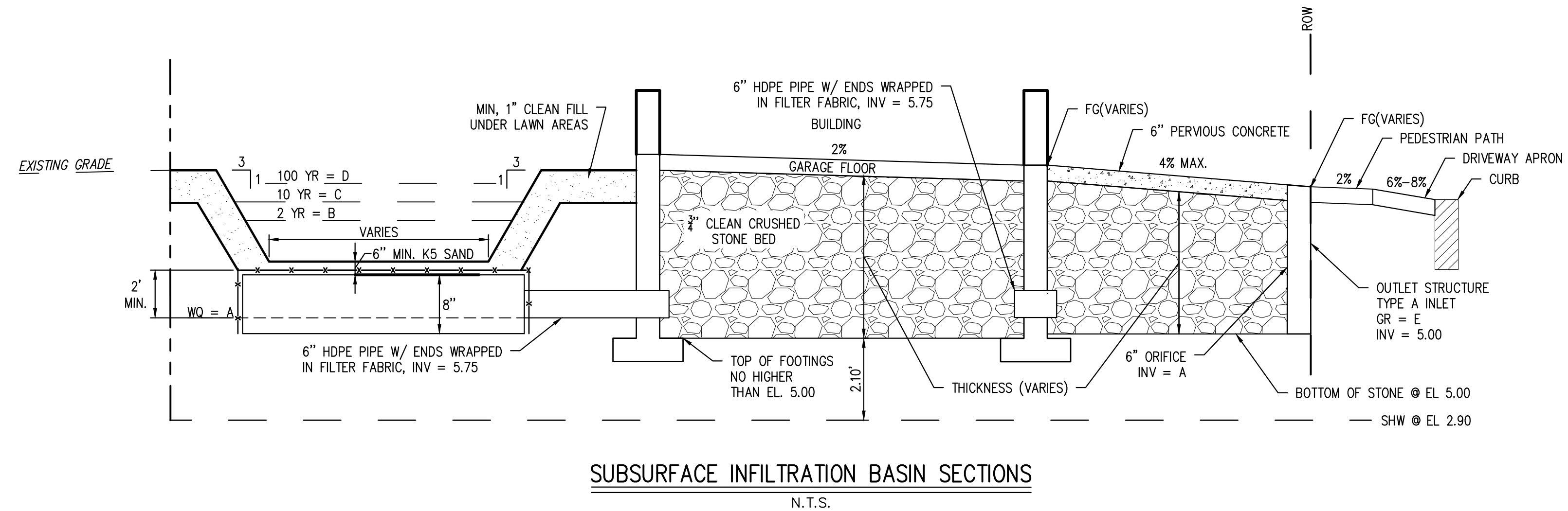
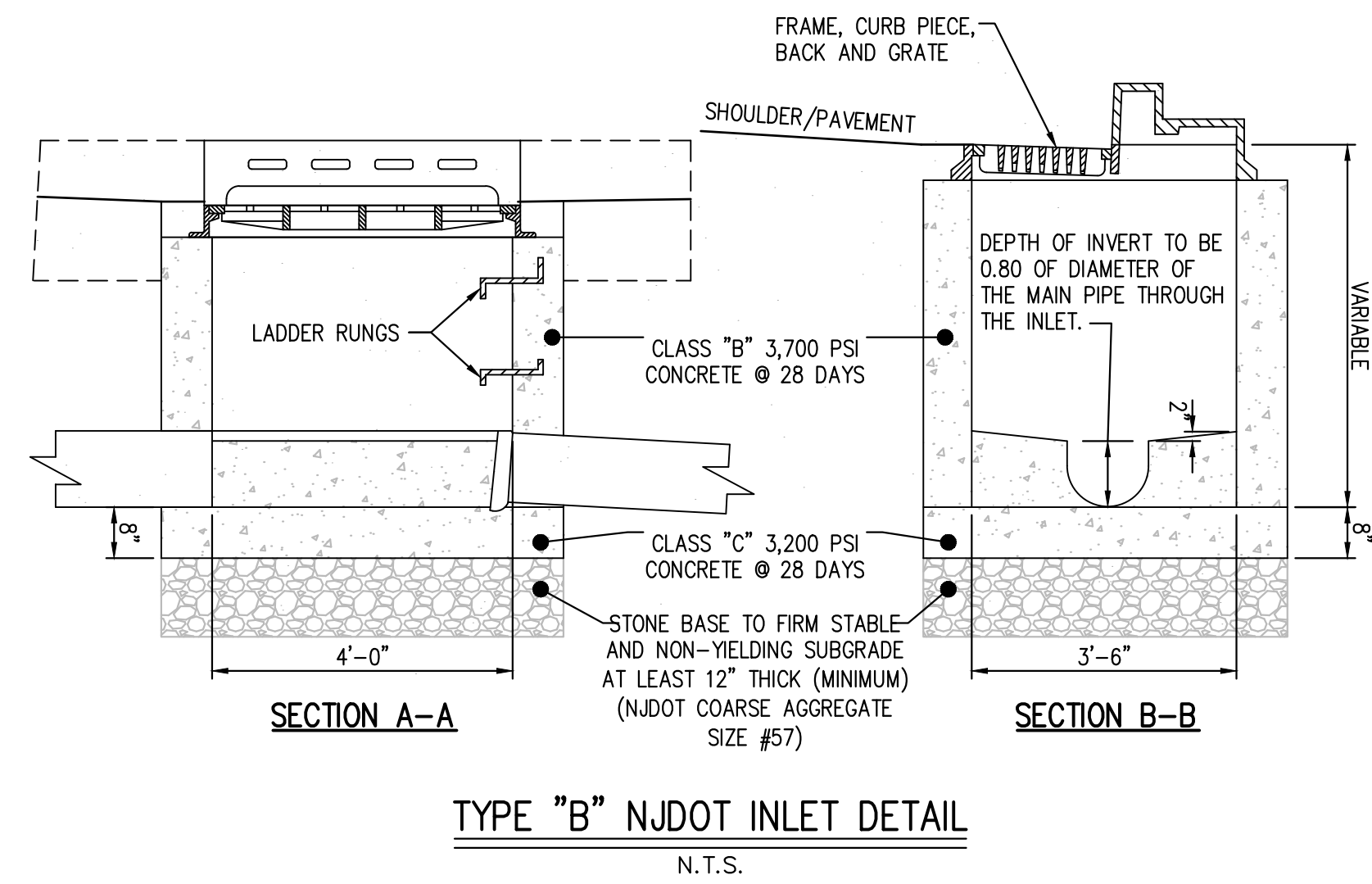
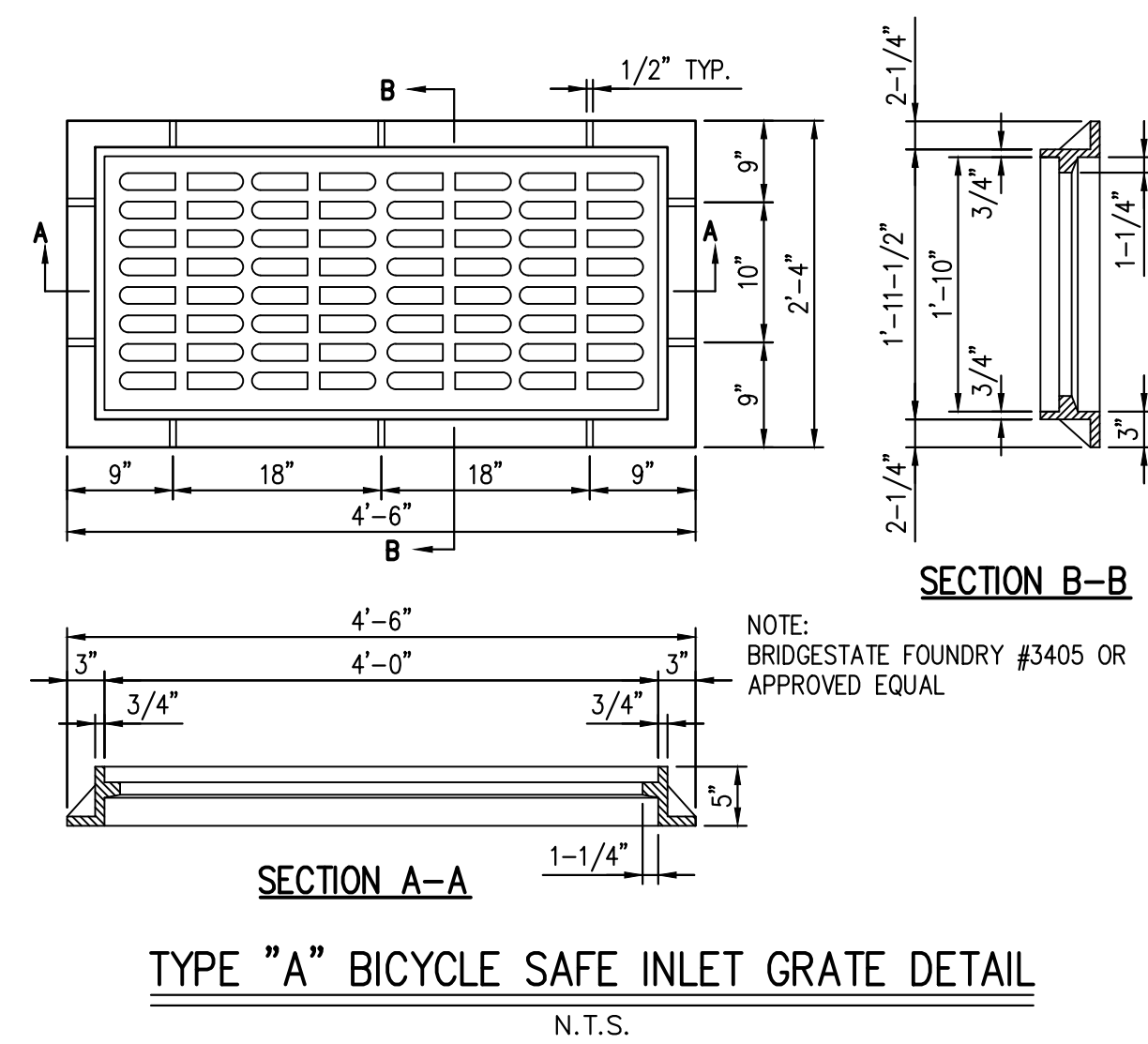
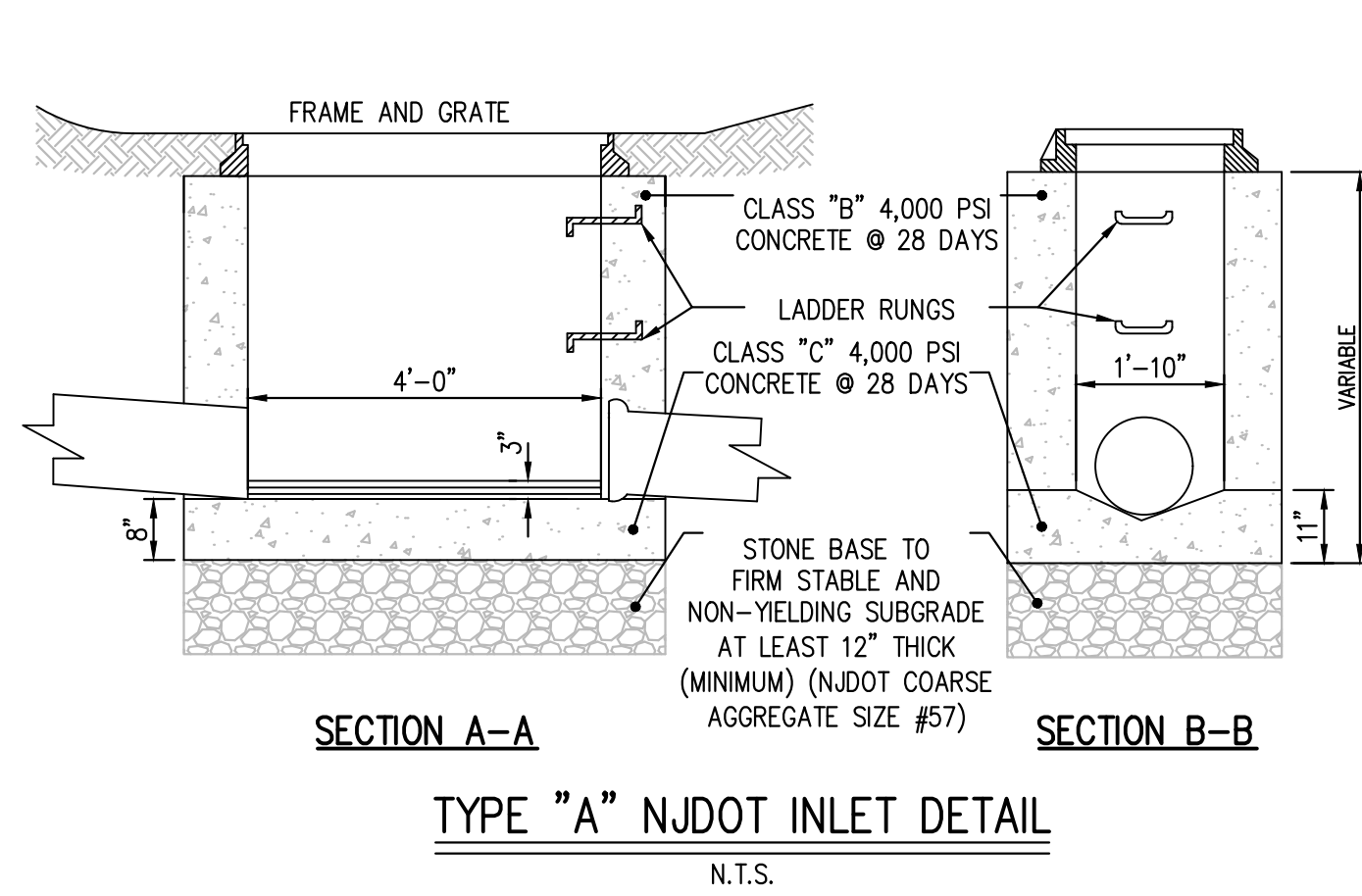
1650 LIMEKILN PIKE, SUITE B19 1043  
DRESHER PENNSYLVANIA 19025

2	CRDA & NUJEP SUBMISSION	LAT	JTS
1	INITIAL RELEASE	LAT	JTS

C1101

PROJECT NO. TRA 002.01	
SCALE AS SHOWN	SHEET 16 OF 23





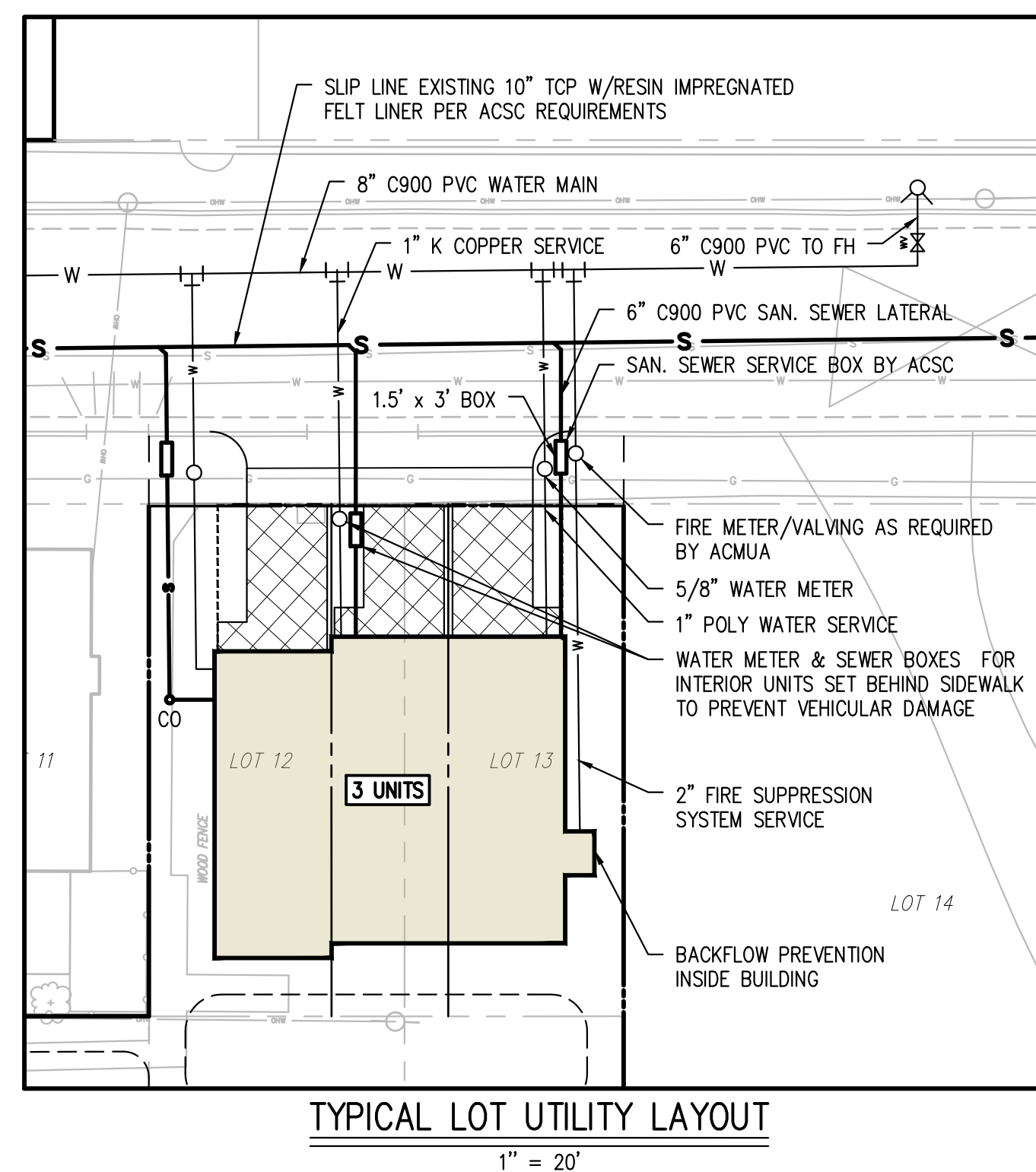
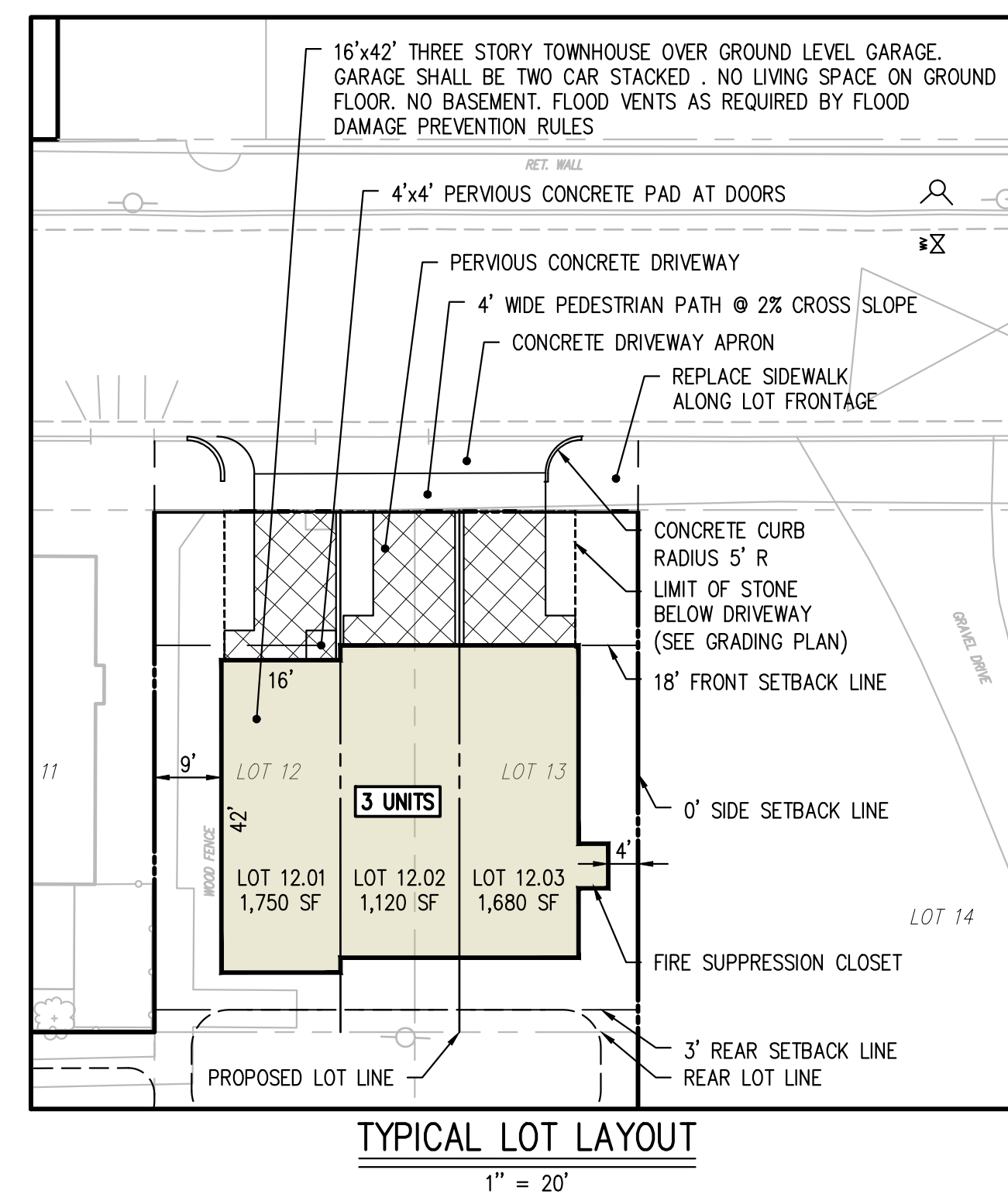
BASIN ELEVATION TABLE

STORMWATER FEATURE	WQ STORM ELEVATION (A)	2 YR STORM ELEVATION (B)	10 YR STORM ELEVATION (C)	100 YR STORM ELEVATION (D)	OUTLET STRUCTURE GRATE/WEIR ELEVATION (E)
WQ 73A.1	5.12	5.19 / 5.25	5.36 / 5.48	5.78 / 6.15	6.10 / 6.80
Basin 73A.1	5.75	5.76 / 5.86	6.16 / 6.39	6.89 / 7.02	7.00
WQ 73A.3	5.04	5.06 / 5.09	5.15 / 5.22	5.40 / 5.65	5.75 / 7.40
Basin 73A.3	7.00	7.00 / 7.01	7.04 / 7.08	7.23 / 7.45	7.50
WQ 73A.4	5.01	5.01 / 5.01	5.02 / 5.02	5.04 / 5.12	5.25 / 7.80
Basin 73A.4	6.50	6.50 / 6.52	6.59 / 6.68	6.92 / 7.20	7.50
WQ 73D.1	5.10	5.16 / 5.21	5.31 / 5.41	5.68 / 6.02	6.00 / 7.65
Basin 73D.1	5.75	5.75 / 5.81	5.96 / 6.12	6.50 / 6.91	7.00
WQ 73E.1	5.06	5.09 / 5.13	5.20 / 5.28	5.49 / 5.76	5.75 / 7.74
Basin 73E.1	6.75	6.75 / 6.77	6.85 / 6.94	7.22 / 7.57	7.75
WQ 73E.3	5.10	5.15 / 5.21	5.31 / 5.41	5.68 / 6.02	6.10 / 7.54
Basin 73E.3	6.00	6.02 / 6.20	6.58 / 6.92	7.67 / 7.77	7.75
WQ 74A.2	5.10	5.15 / 5.20	5.30 / 5.40	5.66 / 5.94	5.55 / 6.25
Basin 74A.2	5.75	5.75 / 5.81	5.97 / 6.14	6.55 / 6.97	7.00
WQ 74A.3	5.09	5.12 / 5.17	5.26 / 5.36	5.59 / 5.85	5.45 / 6.6
Basin 74A.3	5.75	5.76 / 5.84	6.03 / 6.21	6.64 / 7.00	7.00
WQ 74A.4	5.01	5.01 / 5.01	5.01 / 5.02	5.03 / 5.13	5.25 / 6.60
WQ 74A.5	5.01	5.01 / 5.01	5.01 / 5.02	5.04 / 5.13	5.25 / 6.92
WQ 74B.2	5.01	5.01 / 5.02	5.06 / 5.10	5.23 / 5.40	5.40 / 6.35

NOTE 1 - THE ELEVATIONS SHOWN IN WQ STORM COLUMN ARE THE ELEVATIONS ATTAINED IN THE STONE STORAGE AREAS BENEATH THE PERVIOUS PAVEMENT.

NOTE 2 - THE ELEVATIONS SHOWN FOR THE 2, 10 & 100 YEAR STORMS ARE FOR THE CURRENT/PROJECTED RAINFALL DEPTHS, RESPECTIVELY.

NOTE 3 - THE ELEVATIONS SHOWN IN THE OUTLET STRUCTURE GRATE/WEIR COLUMN ARE THE ELEVATION OF THE YARD GRATE/WEIR, RESPECTIVELY




**Know what's below.  
Call before you dig.**

1. EXISTING UTILITY INFORMATION SHOWN ON THESE PLANS IS FURNISHED BY THE UTILITY COMPANIES AND/OR THE SURVEYOR AND THE ACCURACY THEREOF IS NOT THE RESPONSIBILITY OF SCIULLO ENGINEERING SERVICES, LLC. IT IS THE RESPONSIBILITY OF THE OWNERS AND/OR CONTRACTOR TO CALL 1-800-272-1000 FOR FIELD LOCATION OF UNDERGROUND UTILITIES PRIOR TO CONSTRUCTION.
2. THESE PLANS ARE NOT FOR CONSTRUCTION UNTIL "ISSUED FOR CONSTRUCTION" APPEARS IN THE TITLEBLOCK.

DOCUMENTS PREPARED BY SCIULLO ENGINEERING SERVICES, LLC ARE INSTRUMENTS OF SERVICE IN RESPECT TO THE PROJECT. THEY ARE NOT INTENDED OR REPRESENTED TO BE SUITABLE FOR REUSE BY OWNER TO OTHERS, OR EXTENSIONS OF THE PROJECT OR ON ANY OTHER PROJECT. ANY REUSE WITHOUT WRITTEN VERIFICATION OR ADAPTATION BY SCIULLO ENGINEERING SERVICES, LLC FOR THE SPECIFIC PURPOSE IS INTENDED TO BE OWNER'S SOLE RISK AND WITHOUT LIABILITY TO SCIULLO ENGINEERING SERVICES, LLC. SCIULLO ENGINEERING SERVICES, LLC FROM CLAIMS, INDEMNIFY AND HOLD HARMLESS SCIULLO ENGINEERING SERVICES, LLC FROM ALL DAMAGES, LOSSES AND EXPENSES ARISING OUT OF OR RESULTING THEREFROM.

**JASON T. SCIULLO, P.E., P.P.**  
PROFESSIONAL ENGINEER, NEW JERSEY LICENSE NO. 24GE04588  
PROFESSIONAL PLANNER, NEW JERSEY LICENSE NO. 33J1006728



Dr. J. S. Chakrabarti

**SE** | **SCIULLO**  
ENGINEERING  
SERVICES, LLC

137 S. NEW YORK AVENUE, SUITE 2  
ATLANTIC CITY, NEW JERSEY 08401  
PHONE: (609) 300-5171  
[www.sciulloengineering.com](http://www.sciulloengineering.com)

NJ CERTIFICATE OF AUTHORIZATION NO. 24GA28290700

**SOUTHEAST INLET RESIDENTIAL TOWNHOMES**  
**PRELIMINARY AND FINAL SUBDIVISION & SITE PLANS**  
**BLOCKS 73, 74, 76 & 78, MULTIPLE LOTS**  
**ATLANTIC CITY, ATLANTIC COUNTY, NEW JERSEY**

## STORMWATER DETAILS

INLET AC PARTNERS LLC

AC IAKINIKS L  
0 LIMEKILN PIKE, SUITE B19 1043  
RECTOR, DENVER, CO 80202

/24/2025	2	CRDA & NUDEP SUBMISSION	LAT	JTS
/07/2025	1	INITIAL RELEASE	LAT	JTS
DATE	ISSUE NO.	SUBMISSION/REVISION	BY	APPR.

PROJECT NO. TRA 002.01	
SCALE SHOWN	SHEET 17 OF 23

C1102



