

## TEST PIT LOG


Test Pit Location	Existing Grade (NAVD88)	ES HW (NAVD88)	Approx. Test Depth (ft.)	Approx. Test Elevation (ft.)	USDA Classification	Measured Infiltration Rate (in/hr)
TP-28 (76-1)	6.92	0.92	3	3.5	Sand	36+
TP-29 (76-2)	6.75	0.75	2	5	Sand	36+
TP-30 (76-3)	7.57	1.07	3	4.5	Sand	36+
TP-31 (76-4)	9.76	1.78	3	6.5	Sand	36+
TP-32 (76-5)	6.83	0.83	2	4.5	Sand	36+
TP-33 (76-6)	6.93	0.93	2	5	Sand	36+
TP-34 (76-7)	7.89	-0.11	2.5	5.5	Sand	36+
TP-35 (76-8)	6.56	0.96	2	5	Sand	36+
TP-36 (76-9)	6.99	-0.01	2.5	4.5	Sand	36+
TP-37 (76-10)	8.66	0.66	3	6	FILL- loamy sand	8
TP-38 (78-1)	7.45	0.45	2	5	Sand	36+
TP-39 (78-2)	7.58	1.58	2	6	Sand	36+
TP-40A	8.00	2.00	3	5	Sand	36+
TP-41 (78-4)	7.27	1.27	2	4	Sand	36+
TP-42 (78-5)	7.74	0.74	2	5	Sand	36+
TP-43 (78-6)	8.25	0.25	3	5	Loamy Sand	36+
TP-44 (78-7)	6.95	0.95	3	4	Sand	36+
TP-45 (78-8)	7.11	1.11	3	4	Sand	36+
TP-46 (78-9)	7.56	-0.44	2	5.5	Sand	36+
TP-47 (78-10)	8.76	1.76	2	7	Sand	36+

NOTES:

1. SEE GRADING PLANS FOR FURTHER INFORMATION
2. TEST PIT INFORMATION PROVIDED IN TABLE ON THIS SHEET IS AS TAKEN FROM LETTER REPORT ENTITLED "STORMWATER MANAGEMENT TESTING, AC SOUTHEAST INLET RESIDENTIAL TOWNHOMES, ATLANTIC CITY, ATLANTIC COUNTY, NEW JERSEY" PREPARED BY GEO-TECHNICAL ASSOCIATES, INC., PROJECT NO. 3125008BX02, DATED JUNE 2, 2025.
3. AS NOTED IN THE REPORT, ITEM 2, SEASONAL HIGH WATER OBSERVED WAS DURING THE WETTEST SEASON. ADDITION, IT WAS NOTED THAT IT WAS INFLUENCED BY TIDE FLUCTUATIONS WITH PROXIMITY TO THE OCEAN AND HIGHLY PERMEABLE SANDS. THE SHALLOWEST SEASONAL HIGH WATER OBSERVATION WAS IN TP-6 (BLOCK 71) AT HIGH TIDE, AND WAS ELEVATION 2.87. THIS WAS CONSERVATIVELY ASSUMED AS SEASONAL HIGH WATER FOR ALL STORMWATER FEATURE DESIGNS.

[illegible]

**JASON T. SCIULLO, P.E., P.P.**  
PROFESSIONAL ENGINEER, NEW JERSEY LICENSE NO. 24GF04586000  
PROFESSIONAL PLANNER, NEW JERSEY LICENSE NO. 33LI00628400



iscill@scillengineering.com

**SCIULLO**  
ENGINEERING  
SERVICES, LLC

137 S. NEW YORK AVENUE, SUITE 2  
ATLANTIC CITY, NEW JERSEY 08401  
PHONE: (609) 300-5171  
www.sciiulloengineering.com

**SOUTHEAST INLET RESIDENTIAL TOWNHOMES**  
**PRELIMINARY AND FINAL SUBDIVISION & SITE PLANS**  
**BLOCKS 73, 74, 76 & 78, MULTIPLE LOTS**  
**ATLANTIC CITY, ATLANTIC COUNTY, NEW JERSEY**

TEST PIT LOCATION PLAN

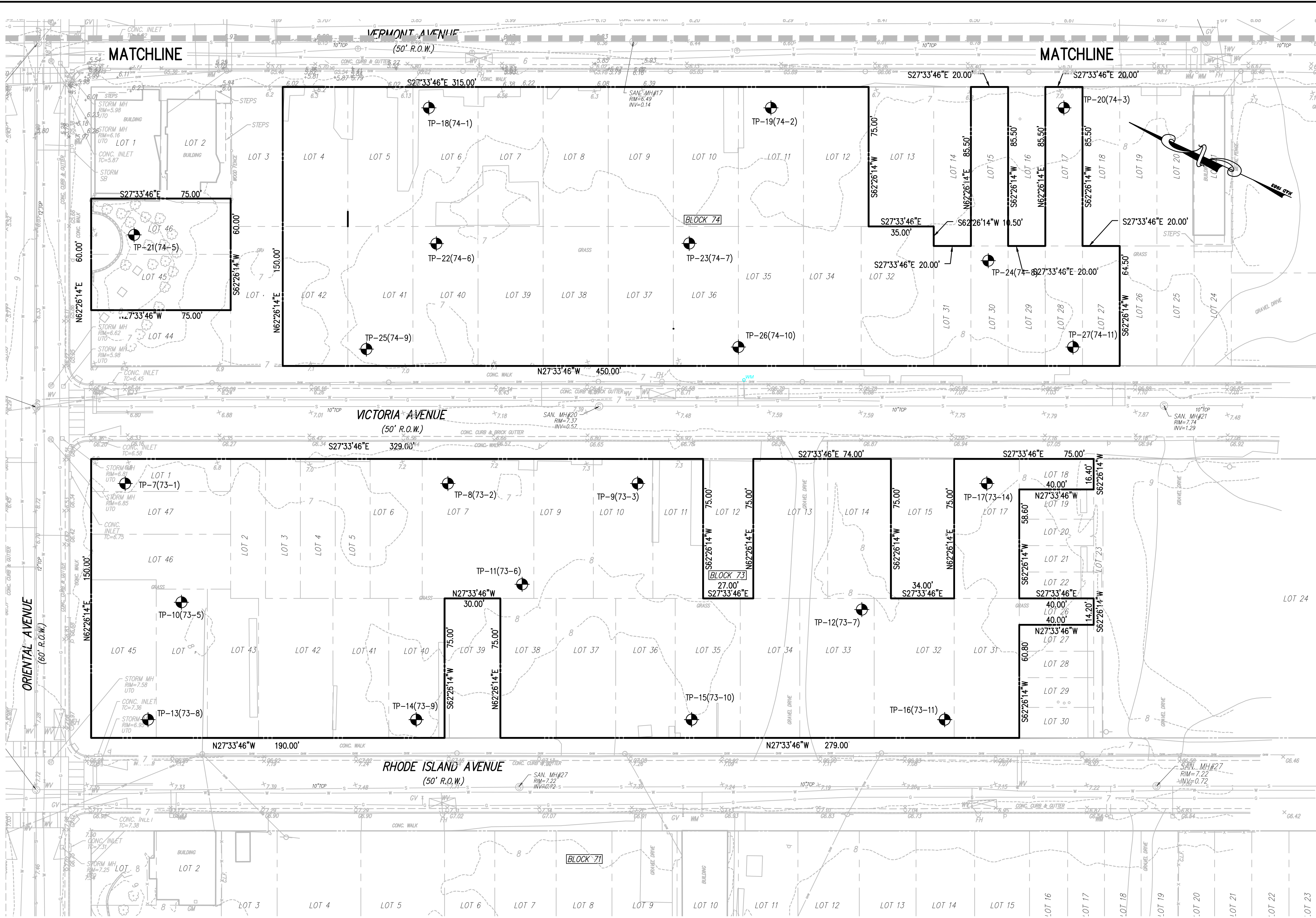
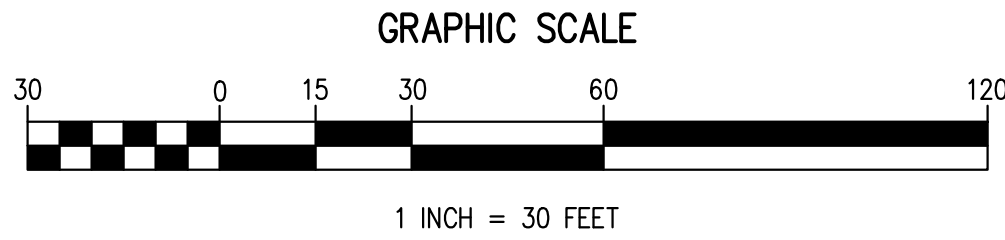
INLET AC PARTNERS LLC  
1650 LIMEKILN PIKE, SUITE B19 1043  
DRESHER, PENNSYLVANIA 19025

PROJECT NO. TRA 002.01		DRAWING NO.  E0301
SCALE 1" = 20'	SHEET 8 OF 23	



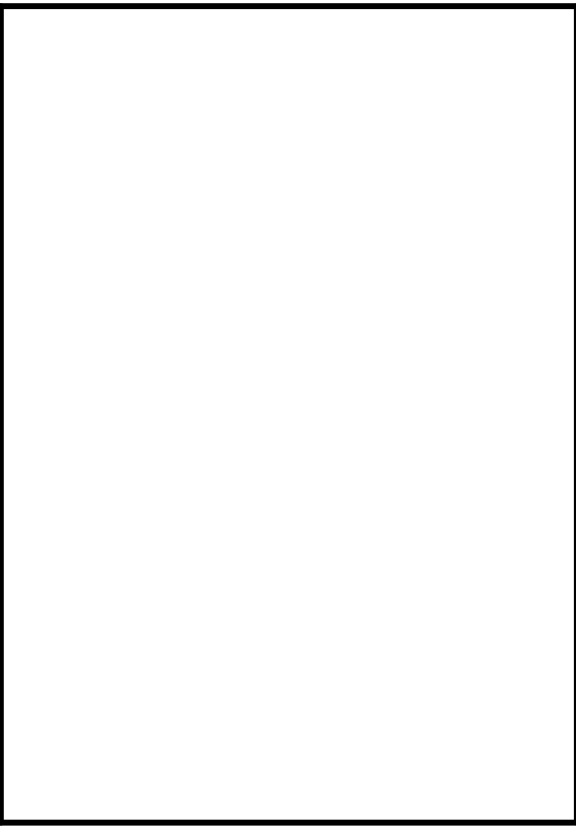


- EXISTING UTILITY INFORMATION SHOWN ON THESE PLANS IS FURNISHED BY THE UTILITY COMPANIES AND/OR THE SURVEYOR AND THE ACCURACY THEREOF IS NOT THE RESPONSIBILITY OF SCIULLO ENGINEERING SERVICES, LLC. IT IS THE RESPONSIBILITY OF THE OWNERS AND/OR CONTRACTOR TO CALL 1-800-272-1000 FOR FIELD LOCATION OF UNDERGROUND UTILITIES PRIOR TO CONSTRUCTION.
- THESE PLANS ARE NOT FOR CONSTRUCTION UNTIL "ISSUED FOR CONSTRUCTION" APPEARS IN THE TITLEBLOCK.



### TEST PIT LOG

Test Pit Location	Existing Grade (NAVD88)	ES HW (NAVD88)	Approx. Test Depth (ft.)	Approx. Test Elevation (ft.)	USDA Classification	Measured Infiltration Rate (in/hr)
TP-7 (73-1)	6.5	0.9	3	4	Sand	36+
TP-8 (73-2)	7.26	1.26	3	4.5	Sand	36+
TP-9 (73-3)	7.39	1.39	3	4.5	Sand	36+
TP-10 (73-5)	7.58	1.58	3	4.5	Sand	36+
TP-11 (73-6)	7.44	1.44	3	4.5	Sand	36+
TP-12 (73-7)	7.64	0.64	2	6	Sand	36+
TP-13 (73-8)	7.56	1.56	3	4.5	Sand	36+
TP-14 (73-9)	8.06	1.06	2	6	Sand	36+
TP-15 (73-10)	7.92	0.92	3	5	Sand	36+
TP-16 (73-11)	7.47	1.47	2	5.5	Sand	36+
TP-17A	7.63	1.63	3	4.5	Sand	36+
TP-18 (74-1)	6.52	0.52	2.5	4	Sand	36+
TP-19 (74-2)	6.39	1.39	2	4.5	Sand	36+
TP-20 (74-3)	7.43	0.43	3.5	4.5	Sand	36+
TP-21 (74-5)	8.41	1.41	4	4.5	Sand	36+
TP-22 (74-6)	7.19	1.19	2	5	Sand	36+
TP-23 (74-7)	7.26	1.26	2	5	Sand	36+
TP-24A	8.23	1.23	2	6.5	FILL- Sandy Loam	7.9
TP-25 (74-9)	7.15	2.15	3	4	FILL- Sandy Loam with Brick Fragments	22.8
TP-26 (74-10)	7.56	1.56	2.5	4.5	Sand	36+
TP-27 (74-11)	7.73	0.73	2	5.5	Sand	36+



INLET AC PARTNERS LLC  
1650 LIMEKILN PIKE, SUITE B19 1043  
DRESSER, PENNSYLVANIA 19025

SCULLO ENGINEERING SERVICES, LLC  
137 S. NEW YORK AVENUE, SUITE 2  
ATLANTIC CITY, NEW JERSEY 08401  
PHONE: (609) 300-5171  
WWW.SCIULLOENGINEERING.COM  
NJ CERTIFICATE OF AUTHORIZATION NO. 24C429290700

JASON T. SCIULLO, P.E., P.P.  
PROFESSIONAL ENGINEER, NEW JERSEY LICENSE NO. 24C0458000  
PROFESSIONAL PLANNER, NEW JERSEY LICENSE NO. 33J00829400

jscullo@scullloengineering.com

SOUTHEAST INLET RESIDENTIAL TOWNHOMES  
PRELIMINARY AND FINAL SUBDIVISION & SITE PLANS  
BLOCKS 73, 74, 76 & 78, MULTIPLE LOTS  
ATLANTIC CITY, ATLANTIC COUNTY, NEW JERSEY

TEST PIT LOCATION PLAN

INLET AC PARTNERS LLC

PROJECT NO.  
TRA 002.01

SCALE  
1" = 20'

DRAWING NO.  
E0302

DATE  
10/07/2025

ISSUE NO.  
1

SUBMISSION/REVISION  
SUBMISSION

BY  
JTS

APP.  
JTS