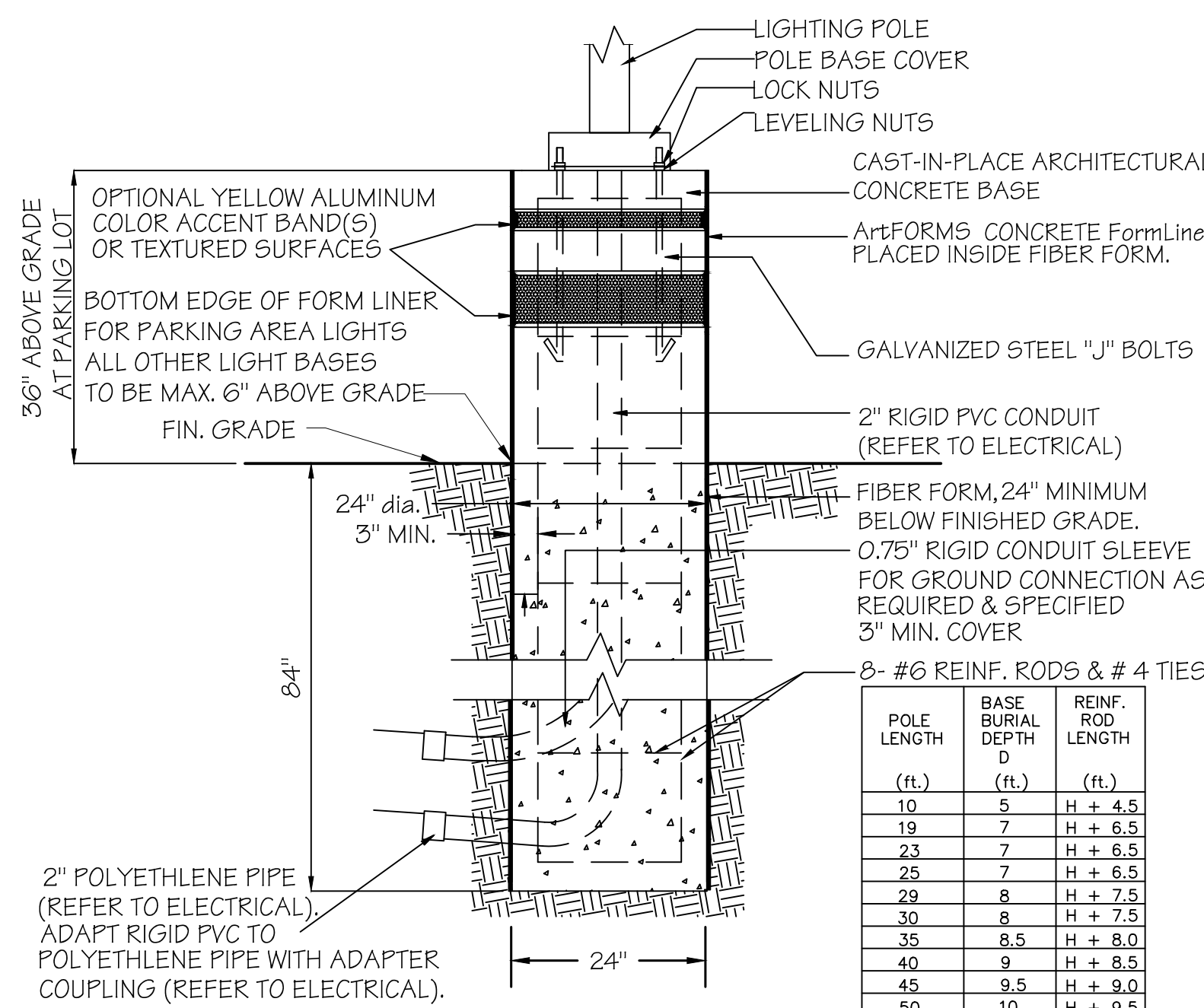


LIGHTING SCHEDULE

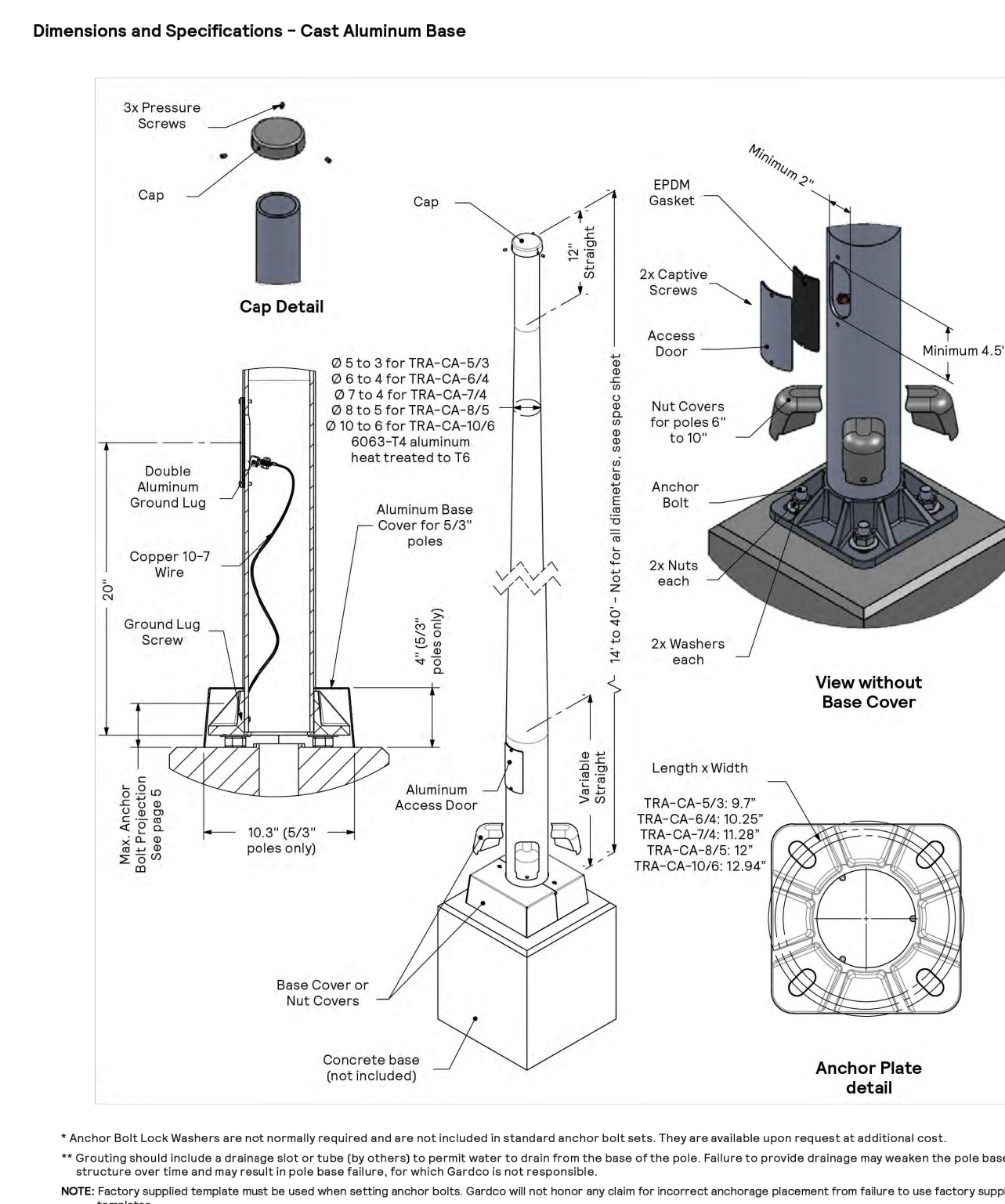
KEY	DESCRIPTION	PROPOSED QTY.
➡	PROPOSED PARKING AREA LIGHT, GARDCO "PUREFORM" P26-A13-840-TYPE 4 MED. PATTERN, POLE MOUNTED LIGHT, MOUNTING HT. 18'	3
H➡	PROPOSED PARKING AREA LIGHT, GARDCO "PUREFORM" P26-A13-840-TYPE 4 MED. PATTERN, POLE MOUNTED LIGHT, WITH HOUSE-SIDE SHIELD (DASHED LINE REPRESENTS APPROX LIGHT CUT-OFF) MOUNTING HT. 18'	1
⊙	PROPOSED BUILDING MOUNTED LIGHT, GARDCO "PUREFORM" P15-P-A02-750-T3M-WAL-UNV-FAWS, (TYPE 3 MED. PATTERN) MOUNTING HT. 15' (SEE MEP AND ARCHITECTURAL PLANS)	12
⊙	PROPOSED SOFFIT LIGHT, PRESCOLITE "LITEBOX PRO SQUARE DOWNLIGHT" LBRP-M-L-SM-L-WD/LBRP-4SQD-T-D (SEE MEP AND ARCHITECTURAL PLANS)	9



NOTE: DEPTH OF FOOTING TO BE VERIFIED BY THE STRUCTURAL ENGINEER UPON REVIEW OF SOIL BORINGS.
LIGHT POLE BASE

CONTRACTOR TO HAND RUB SMOOTH AND CHAMFER CONCRETE BASE TO SATISFACTION OF PROJECT LANDSCAPE ARCHITECT. N.T.S.

Poles Tapered Round Aluminum



GARDCO TAPERED ALUMINUM POLE Model #: TRA-CA-5/3-188-16 (16' h. pole on 36" exposed ht. footing)

16' H. LIGHT POLE
NOTE: DEPTH AND TYPE OF FOOTING TO BE VERIFIED BY THE STRUCTURAL ENGINEER UPON REVIEW OF SOIL BORINGS. N.T.S.

prescolite
LBRP-SQD
LITEBOX PRO SQUARE DOWNLIGHT

DATE: LOCATION:
TYPE: PROJECT:
CATALOG #:

tradeSELECT

CATALOG # LBRP-M-LCS9-WD/LBRP-4SQD-T-D Example: LBRP-M-LCS9-WD/LBRP-4SQD-T-D

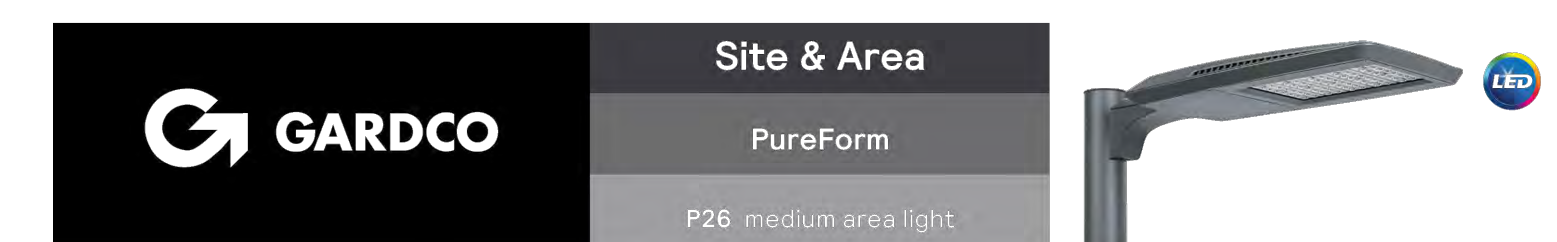
Model Type	Lumen Output	Color Temp	Voltage	Options	WD
LBRP-M-SL	7000lm/6100 Lumens	CCCT/6500	Standard with DD-270C	Standard without	WD 35-37"
LBRP-M-MS	9000-2300/2700 Lumens	50 CRI	Standard with DD-270C	Standard with	WD 35-37"
LBRP-M-MS	14, 4000-4500/5500 Lumens**	2700 2700K, 50 CRI	34 120-180V to 277V	Emergency battery Backup Ready**	WD 105-108 1/2"

CANOPY SOFFIT LIGHT

NOTE: DEPTH AND TYPE OF FOOTING TO BE VERIFIED BY THE STRUCTURAL ENGINEER UPON REVIEW OF SOIL BORINGS. N.T.S.

SITE LIGHTING NOTES:

- HOUSE-SIDE LIGHTING SHIELDS SHALL BE PROVIDED ON LIGHT FIXTURES WHERE APPLICABLE TO ELIMINATE ANY ILLUMINATION ON ADJACENT PROPERTIES FROM AREA/SITE LIGHTING FIXTURES.
- ALL LIGHTING SHALL HAVE PHOTOCELL AND TIMER DEVICES INCLUDED FOR SITE LIGHTING MANAGEMENT.



Gardco PureForm LED area medium P26 features a sleek, low profile design and optimal performance. PureForm area medium is designed to achieve maximum pole spacing, with lumen output up to 28,900 lumens. Multiple distribution and shielding options are available to achieve maximum control. A full range of control options provides additional energy savings.

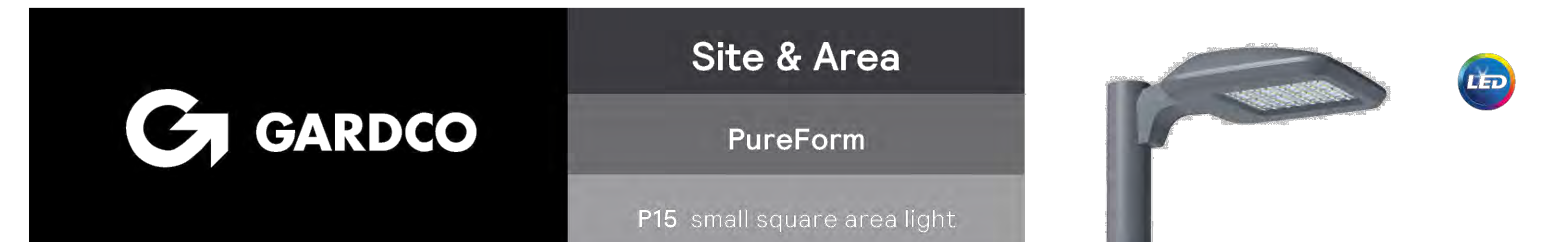
Project:	Location:	City:

Ordering guide Example: P26-A13-840-TM-W3-AR-3-120-1H16-M2V

Part	Number of Qty	Description	Quantity	Notes
P26 PureForm area	48	48x P26 Area Medium LED Light	48	1. 120V
48x 48x LED (3'x3')	48	48x 48x LED (3'x3')	48	2. 208V

GARDCO PUREFORM PARKING AREA LIGHT (mounting height (MH) per plan)

NOTE: DEPTH AND TYPE OF FOOTING TO BE VERIFIED BY THE STRUCTURAL ENGINEER UPON REVIEW OF SOIL BORINGS. N.T.S.



Gardco PureForm LED area small square precision P15 features a sleek, low profile design. Precision optics are optimized for maximum efficiency and uniformity. Multiple optical distributions and color temperatures are available to allow you to customize your selection.

Project:	Location:	City:

Ordering guide Example: P15-P-A02-750-T3M-WAL-UNV-BLS0-L3-BZ

Part	Options	Configuration	Color Temperature	Distribution	Mounting	Notes
P15	Precision	ADD 3,000 Lumens	700 100K/3000K	T3M Type 3 Medium	ARF Arm Mount (Standard)	130 120V
P15	Precision	ADD 4,000 Lumens	740 100K/3000K	T3M Type 3 Medium	ARF Arm Mount (Standard)	208 208V
P15	Precision	ADD 6,000 Lumens	760 100K/3000K	T4S Type 4 Short	ARF Arm Mount (Standard)	277 277V
P15	Precision	ADD 8,000 Lumens	840 100K/3000K	T5S Type 5 Short	ARF Arm Mount (Standard)	347 347V
P15	Precision	ADD 10,000 Lumens	827 100K/3000K	T5S Type 5 Short	ARF Arm Mount (Standard)	480 480V
P15	Precision	ADD 14,000 Lumens	827 100K/3000K	T5S Type 5 Short	ARF Arm Mount (Standard)	UNV 120-277V (Selectable)
P15	Precision	ADD 16,000 Lumens	827 100K/3000K	T5S Type 5 Short	ARF Arm Mount (Standard)	HS 30-60V (Selectable)

GARDCO PUREFORM WALL MOUNT LIGHT (mounting height (MH) per plan)

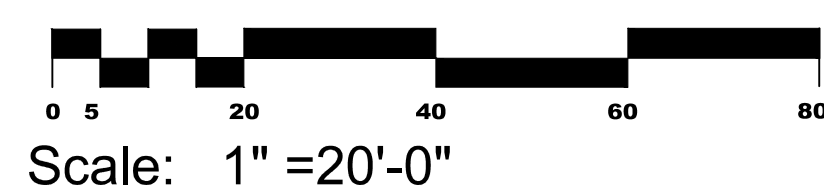
NOTE: DEPTH AND TYPE OF FOOTING TO BE VERIFIED BY THE STRUCTURAL ENGINEER UPON REVIEW OF SOIL BORINGS. N.T.S.



1. Product sold standard with T3DA
2. Extended lead times apply. Contact factory for details.
3. Mounts to a 4" x 10" round pole with adapter included for square poles.
4. Not available with other dimming control options (usually available).
5. Not available with motion sensor.
6. Must be specified with a motion sensor.
7. Not available with photocell.
8. Not available in 347 or 480V.
9. Must specify motor sensor type.
10. Not available in 480V. Order photocell separately for 120V.
11. Not available in 480V. Order photocell separately for 208V.
12. Not available with DALI and FAWS dimming control options.
13. Not available with DALI and FAWS dimming control options.
14. Limited to max. 800mA conductor capacity.
15. Not available with DALI and FAWS dimming control options.
16. Not available with DALI and FAWS dimming control options.
17. Must specify motor sensor type.

PARKING LOT LIGHTING

SCALE 1" = 20'



Scale: 1" = 20'-0"

CANOPY SOFFIT LIGHT

NOTE: DEPTH AND TYPE OF FOOTING TO BE VERIFIED BY THE STRUCTURAL ENGINEER UPON REVIEW OF SOIL BORINGS. N.T.S.