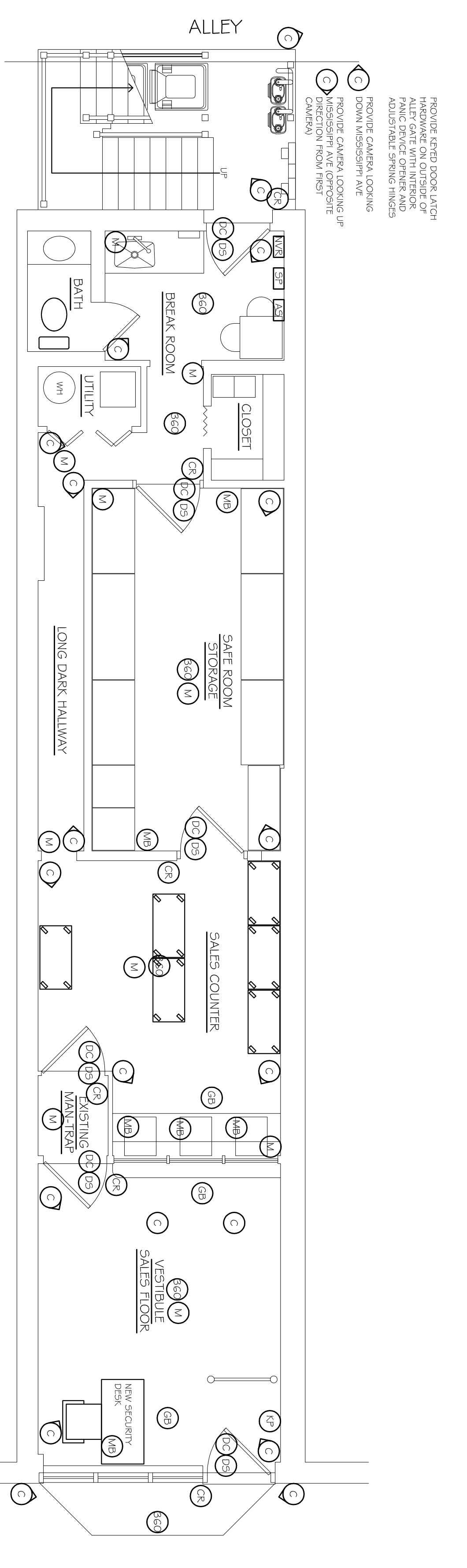
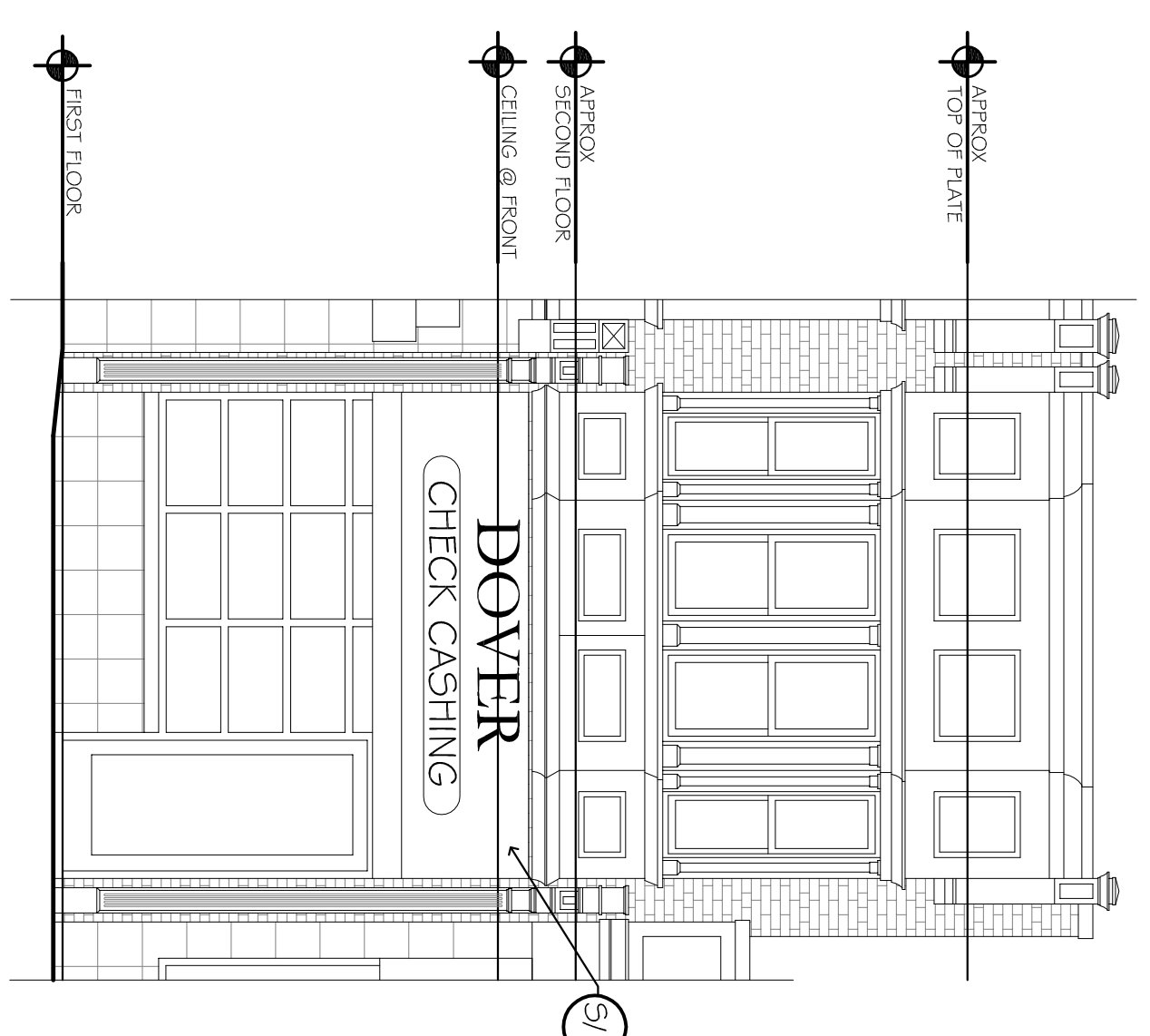


PROPOSED FLOOR PLAN
SCALE: 1/4" = 1'-0"

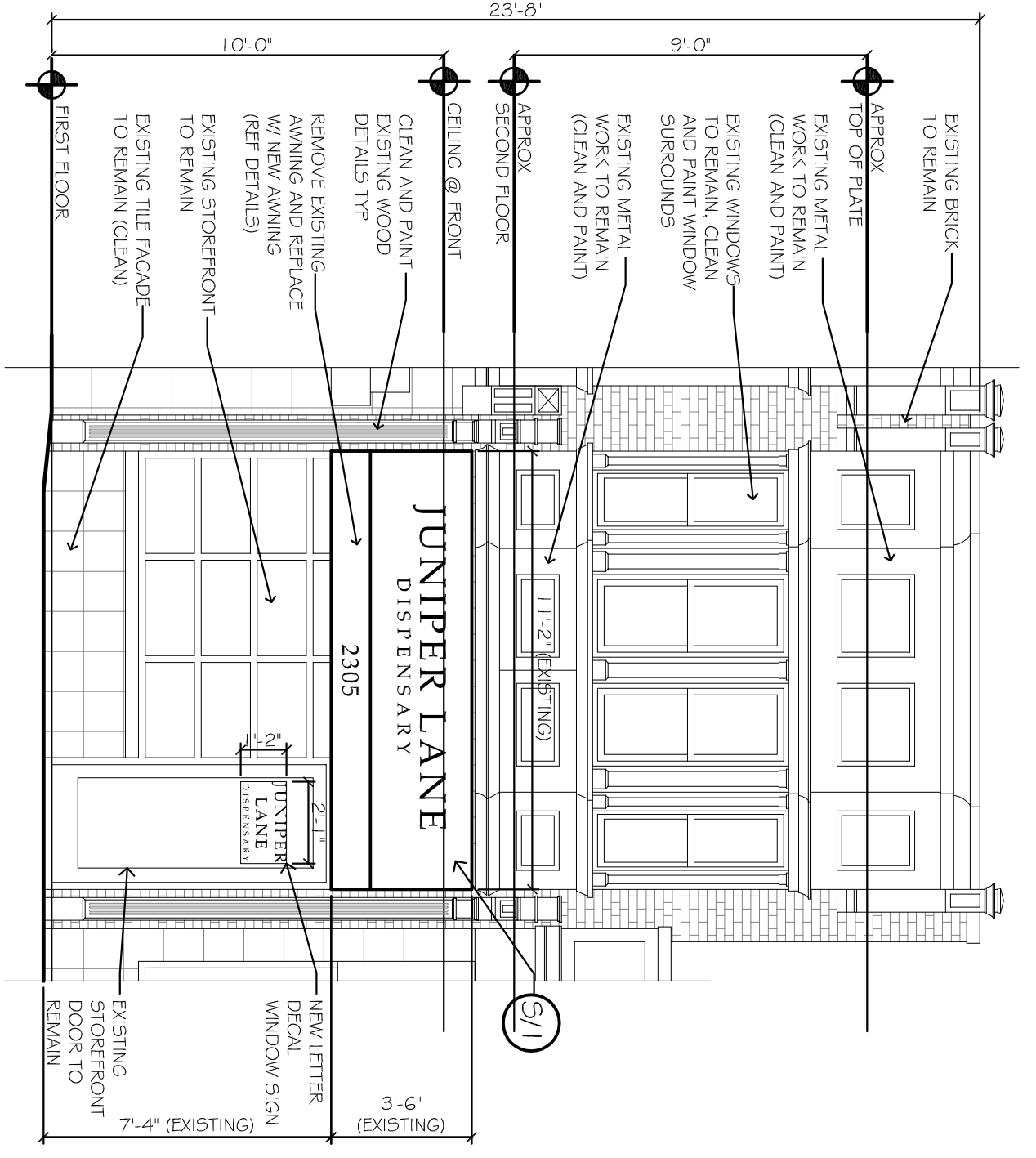
- SECURITY LEGEND**
- 360 CAMERA
 - DIRECTIONAL CAMERA
 - FACE CAMERA
 - DOOR CAMERA
 - KEYPAD SECURITY
 - CARD READER
 - MOTION SENSOR
 - GLASS BREAKER
 - DOOR STRIKE
 - DOOR CONTACT
 - PHOTO BEAM
 - MANUAL HIGH BULLION
 - ACCESS SYSTEM
 - SECURITY PANEL
 - NETWORK VIDEO RECORDER
- SECURITY NOTES**
- THE ELECTRONIC ALARM SYSTEM WHEN TRIPPED WILL NOTIFY THE POLICE AND THE BUSINESS OWNER.
 - PROVIDE ON-SITE SECURITY AT LEAST ONE HOUR PRIOR TO THE BUSINESS OPENING TO MANAGE THE ALARMS.
 - ALL SECURITY CAMERAS SUBJECT TO REVIEW BY THE CITY POLICE DEPARTMENT.
 - SECURITY PLAN WITH THE CITY POLICE DEPARTMENT.
 - SHANGHAI REVIEW THE SECURITY PLAN WITH THE CITY POLICE DEPARTMENT.
 - MINIMUM DARK TO ILLUMINATION



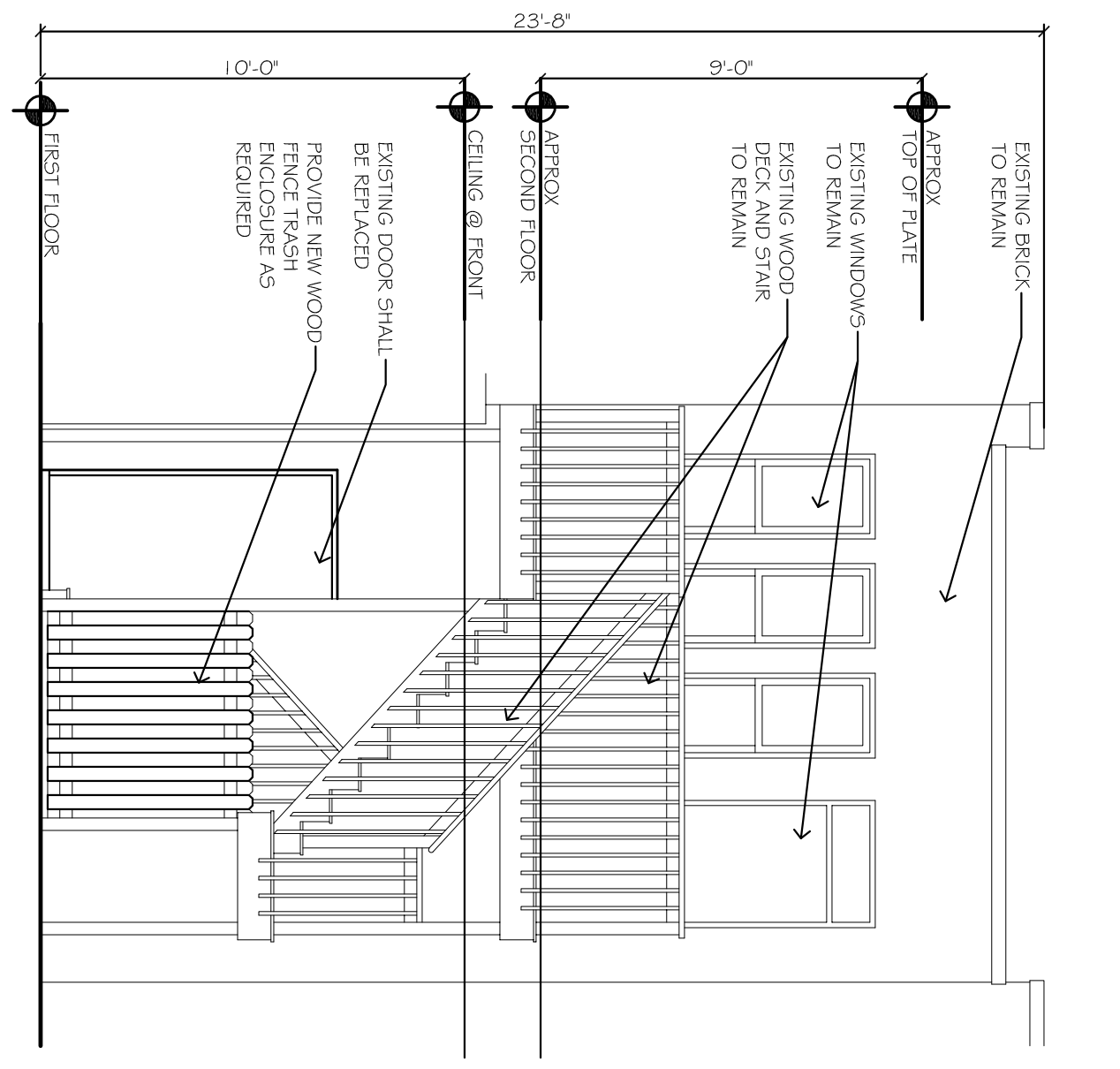
PROPOSED SECURITY PLAN
SCALE: 1/4" = 1'-0"



EXISTING FRONT ELEVATION
SCALE: 1/4" = 1'-0"



PROPOSED FRONT ELEVATION
SCALE: 1/4" = 1'-0"



PROPOSED REAR ELEVATION
SCALE: 1/4" = 1'-0"

EXISTING SIGNAGE STATISTICS

SIZE	SQ. FT.	STATUS	DESCRIPTION	TYPE
5/1 8'-4" X 2'-4"	19.5 SQFT	REMOVE	VINYL GRAPHIC	AWNING

PROPOSED SIGNAGE STATISTICS

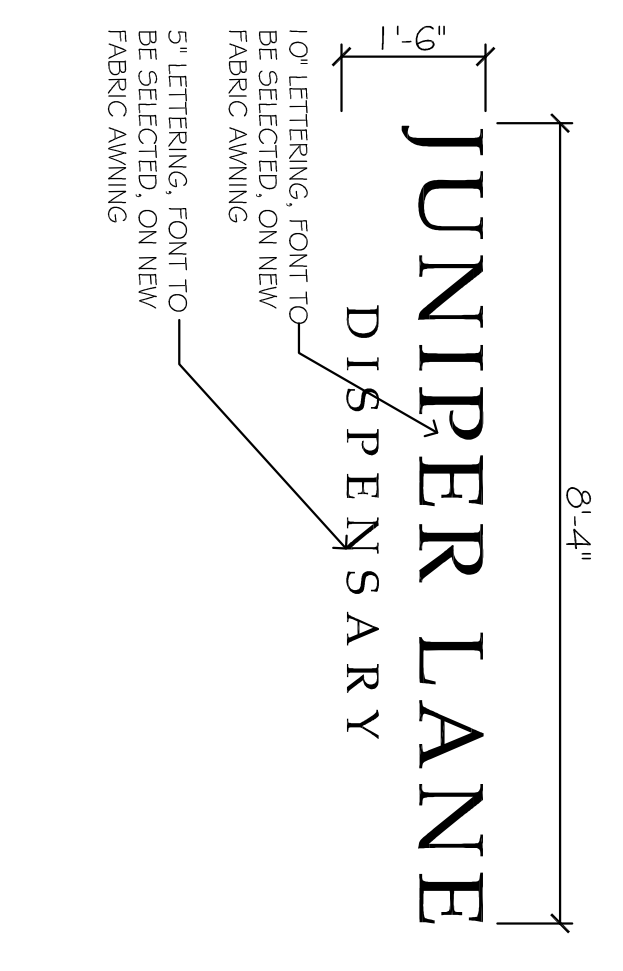
SIZE	SQ. FT.	STATUS	DESCRIPTION	TYPE
5/1 8'-4" X 1'-6"	12.5 SQFT	NEW	PRINTED AWNING	AWNING

EXISTING SIGNAGE CALCS

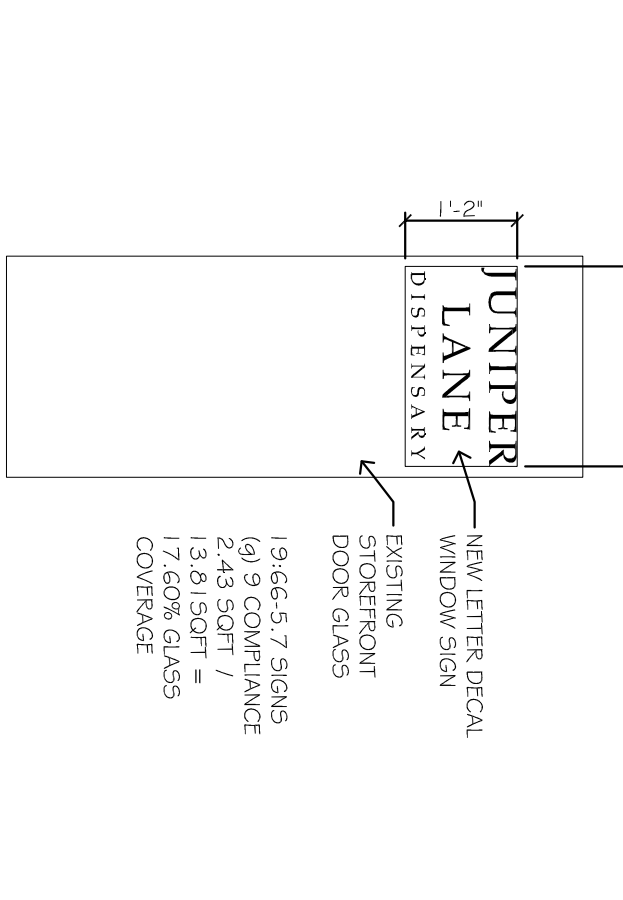
AREA OF SIGNAGE	PERCENTAGE OF COVERAGE
19.5 SQFT	300.0 SQFT
300.0 SQFT	6.50 %

PROPOSED SIGNAGE CALCS

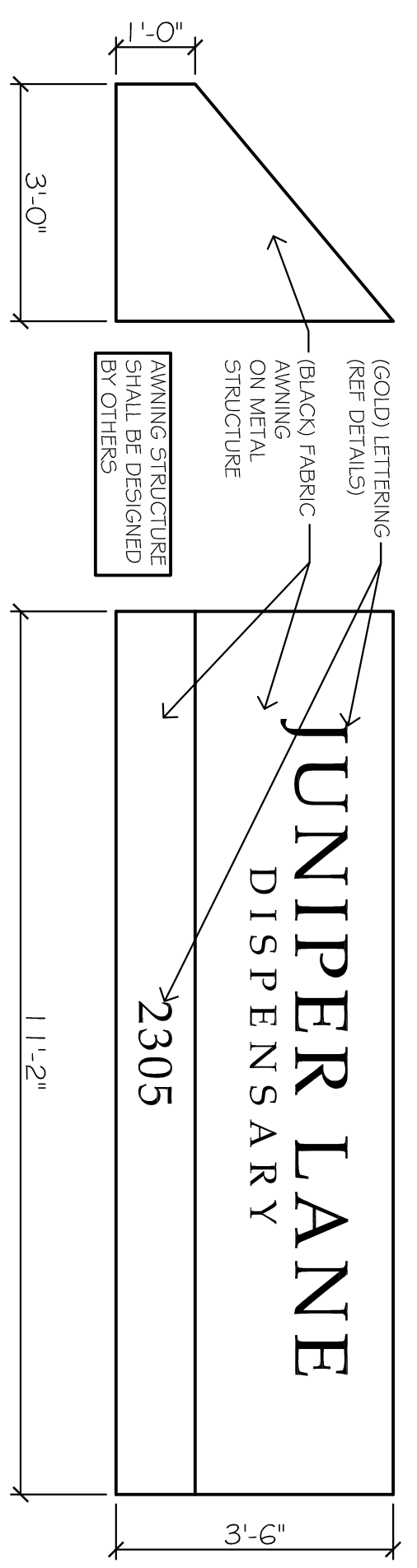
AREA OF SIGNAGE	PERCENTAGE OF COVERAGE
12.5 SQFT	300 SQFT
300 SQFT	4.20 %



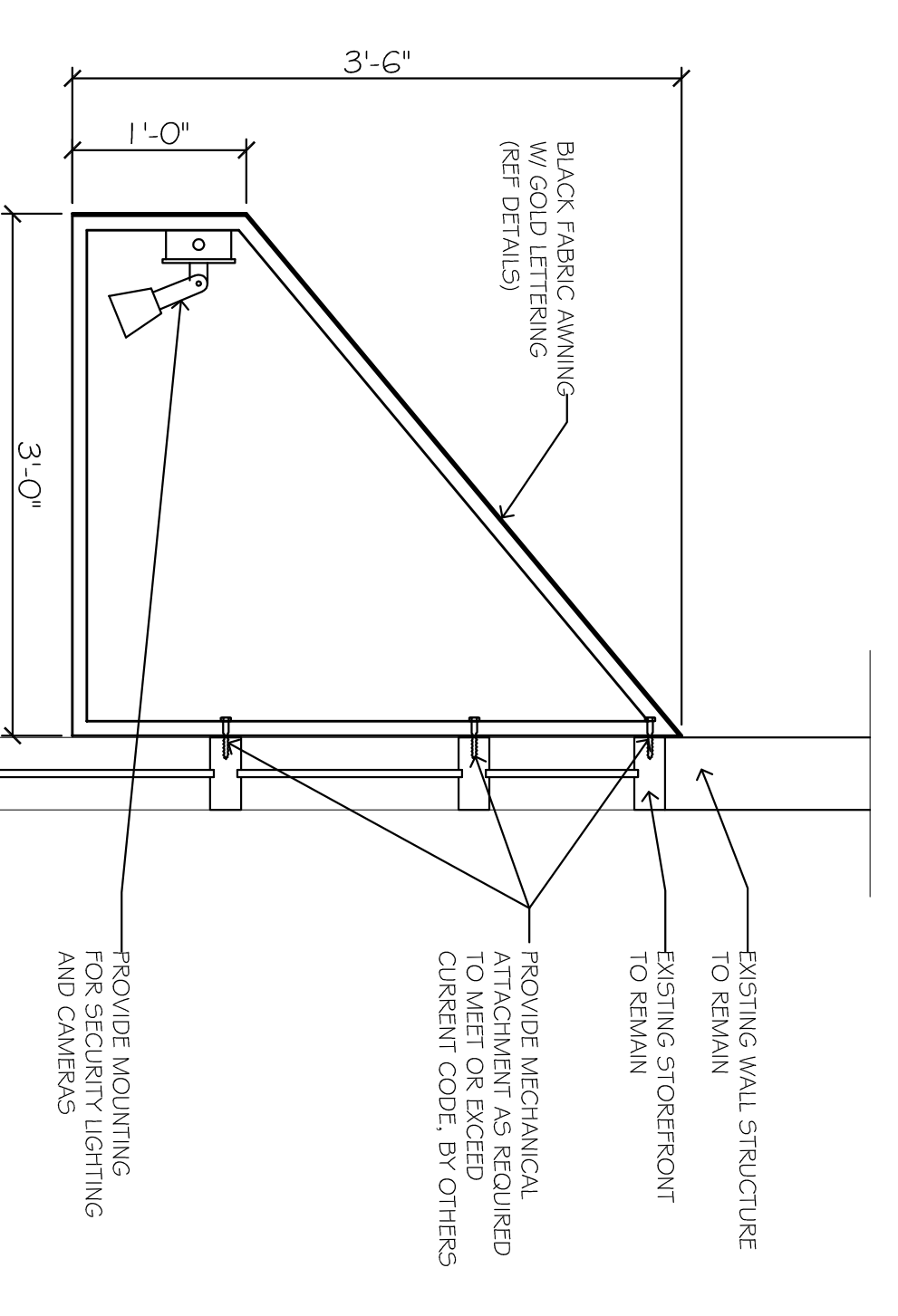
SIGN - 1
SCALE: 1/2" = 1'-0"



WINDOW SIGN
SCALE: 1/2" = 1'-0"



SIGNAGE / AWNING DETAIL
SCALE: 1/2" = 1'-0"



SIGNAGE DETAIL
SCALE: 1" = 1'-0"

ZONING APPLICATION DRAWING NOT FOR CONSTRUCTION

#	Revisions	Date

Consultant

Craig F. Dothé Architect LLC.
ARCHITECTS & PLANNERS
33 N. Brighton Ave. (609) 348-2236
Atlantic City, NJ 08401 Fax (609) 348-0118

Signature
Date: 05.16.24
Registration #
AI 09640

CANNABIS DISPENSARY
2305 ATLANTIC AVENUE
ATLANTIC CITY, NJ 08401

Scale: A5 NOTED
Project No.: 2024-25
Date: 05.16.24
Drawn by: CFD
A-1