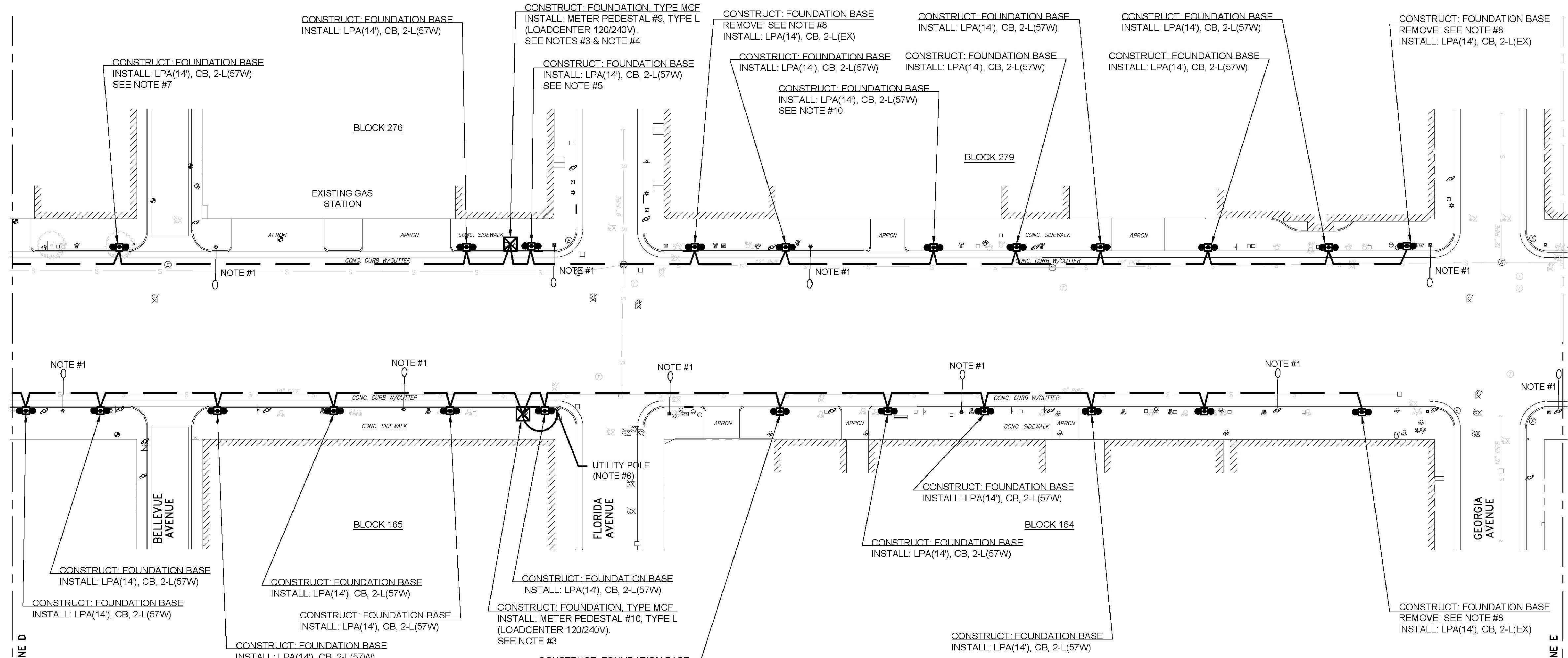
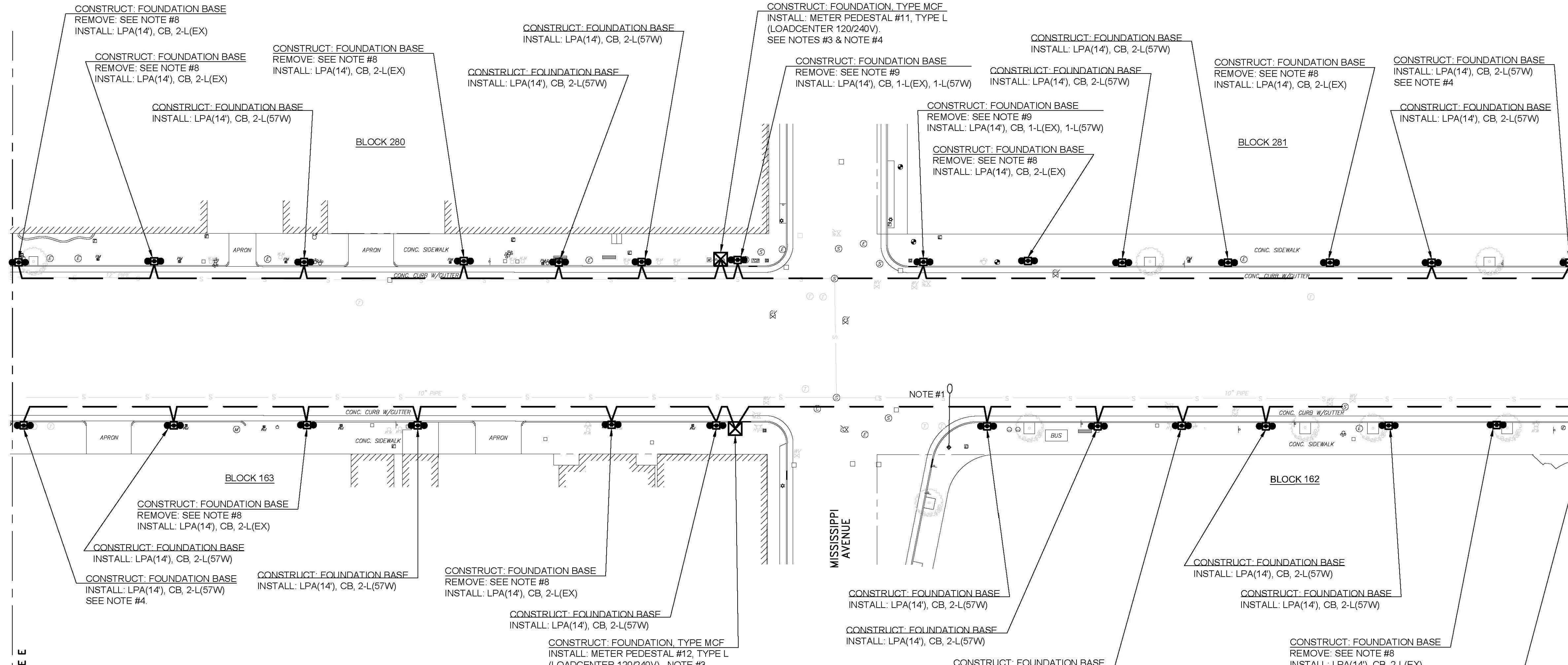


C:\Bk\16700\16776 - Atlantic Avenue Road Diet Project\16776.001_E2.0 Phase 2.dwg



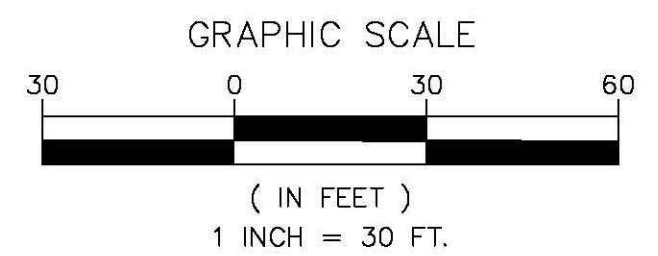
LIGHTING PART PLAN E
SCALE: 1" = 30'-0"



LIGHTING PART PLAN F
SCALE: 1" = 30'-0"

SHEET NOTES:

- EXISTING ATLANTIC CITY ELECTRIC (ACE) STREET LIGHTING LED COBRA HEAD TYPE FIXTURE TO REMAIN (TYPICAL).
- COORDINATE ALL CONDUIT ROUTING WITH THE EXISTING SITE UTILITIES. ALL LIGHTING CONDUITS SHALL MAINTAIN A 4'-0" DISTANCE WHEN RUNNING PARALLEL TO THE EXISTING TERRA COTTA SEWER LINES.
- UNDERGROUND SECONDARY SERVICE FEEDERS FROM OVERHEAD DISTRIBUTION NETWORK TO METER PEDESTAL FURNISHED AND INSTALLED BY THE CONTRACTOR. COORDINATE WITH ATLANTIC CITY ELECTRIC.
- REMOVE AND RELOCATE TWO (2) EXISTING TRASH RECEPTACLES TO ACCOMMODATE NEW LIGHTING FIXTURE OR METER PEDESTAL LOCATION.
- EXISTING RESIDENTIAL STYLE POST TOP LIGHTING FIXTURE INSTALLED AT THIS LOCATION TO BE REMOVED.
- EXISTING UTILITY COMPANY POLE. FIELD VERIFY POLE NUMBER.
- NEW LIGHTING FIXTURE AT EXISTING ABANDONED OR DEAD TREE LOCATION.
- EXISTING DOUBLE ACORN SIDEWALK LIGHTING FIXTURE TO BE DISCONNECTED AND REMOVED. ATLANTIC CITY ELECTRIC (ACE) TO DISCONNECT AND REMOVE EXISTING UTILITY OWNED PEDESTRIAN LIGHTING WIRING. ELECTRICAL CONTRACTOR SHALL REMOVE EXISTING POLE BASE, POLE AND LUMINAIRE. PROVIDE NEW POLE BASE, POLE, CROSS BRACKET, AND REUSE THE TWO ACORN LUMINAIRES AT THIS LOCATION. CONTRACTOR SHALL PROVIDE NEW CUSTOMER WIRING CONNECTED TO NEW METER PEDESTAL LOADCENTER AS SHOWN.
- EXISTING SINGLE ACORN SIDEWALK LIGHTING FIXTURE TO BE DISCONNECTED AND REMOVED. ATLANTIC CITY ELECTRIC (ACE) TO DISCONNECT AND REMOVE EXISTING UTILITY OWNED PEDESTRIAN LIGHTING WIRING. ELECTRICAL CONTRACTOR SHALL REMOVE EXISTING POLE BASE, POLE AND LUMINAIRE. PROVIDE NEW POLE BASE, POLE, AND REUSE EXISTING ACORN LUMINAIRE AT THIS LOCATION. CONTRACTOR SHALL PROVIDE NEW CUSTOMER WIRING CONNECTED TO NEW METER PEDESTAL LOADCENTER AS SHOWN.
- EXISTING BOLLARD TO BE REMOVED AND NEW LIGHTING FIXTURE INSTALLED AT THIS LOCATION.
- COORDINATE ALL UTILITY COMPANY WORK WITH MR. WILLIAM EDWARDS AT ACE: EMAIL William.Edwards@atlanticcityelectric.com. Phone: 609-204-3626.



LEGEND

- PROPOSED METER PEDESTAL NJ DOT TYPE L
- EXISTING PRIVATE OR AC ELECTRIC LIGHTING POLE TO REMAIN (ETR)
- EXISTING LED COBRA HEAD LUMINAIRE TO REMAIN.
- DOUBLE ACORN LIGHT POLE
- EXISTING UTILITY POLE
- ELECTRICAL CONDUIT

FPA
FRENCH & PARRELLO ASSOCIATES
New Jersey • New York • Pennsylvania • Georgia
Corporate Office: 1800 Rt. 34, Suite 101 Wall, New Jersey 07719 732.312.9800
FPAengineers.com

PROGRESS SET
NOT FOR CONSTRUCTION
AMIN H. GOMAA, PE
PROFESSIONAL ENGINEER, NJ LIC. NO. 24GE04842100

DRAWN BY: AMP	DESIGN BY: AMP	CHECKED BY: AHG	SCALE: AS NOTED
DATE: 8-3-2023	SHEET: 19 of 46		SCALE: E2.2
JOB NO.: 01-024-016			

RVE
1901
REMINGTON & VERNICK ENGINEERS
845 NORTH MAIN STREET
PLEASANTVILLE, NJ 08232
(809) 845-7110, FAX (809) 845-7076
WEB SITE ADDRESS: WWW.RVE.COM
Certification of Authorization: 24 GA 28033300
-ENGINEERING EXCELLENCE-

PRELIMINARY

PLANS WHICH DO NOT BEAR AN EMBOSSED SEAL ARE NOT VALID

ALL DOCUMENTS PREPARED BY REMINGTON & VERNICK ENGINEERS AND AFFILIATES ARE INSTRUMENTS OF SERVICE IN RESPECT OF THE PROJECT. THEY ARE NOT INTENDED OR REPRESENTED TO BE SUITABLE FOR REUSE BY OWNER OR OTHERS ON EXTENSIONS OF THE PROJECT OR ON ANY OTHER PROJECT. ANY REUSE WITHOUT WRITTEN VERIFICATION OR ADAPTATION BY REMINGTON & VERNICK ENGINEERS AND AFFILIATES FOR THE SPECIFIC PURPOSE INTENDED WILL BE AT OWNERS SOLE RISK AND WITHOUT LIABILITY OR LEGAL EXPOSURE TO REMINGTON & VERNICK ENGINEERS AND AFFILIATES. AND OWNER SHALL INDEMNIFY AND HOLD HARMLESS REMINGTON & VERNICK ENGINEERS AND AFFILIATES FROM ALL CLAIMS, DAMAGES, LOSSES AND EXPENSES ARISING OUT OF OR RESULTING THEREFROM.

No.	REVISION	DATE		BY
		DATE	BY	

16776.001 E2.0 PHASE 2 - E2.2
CITY OF ATLANTIC CITY
ATLANTIC AVENUE ROAD DIET - PHASE 2B
CITY OF ATLANTIC CITY
ATLANTIC COUNTY
NEW JERSEY