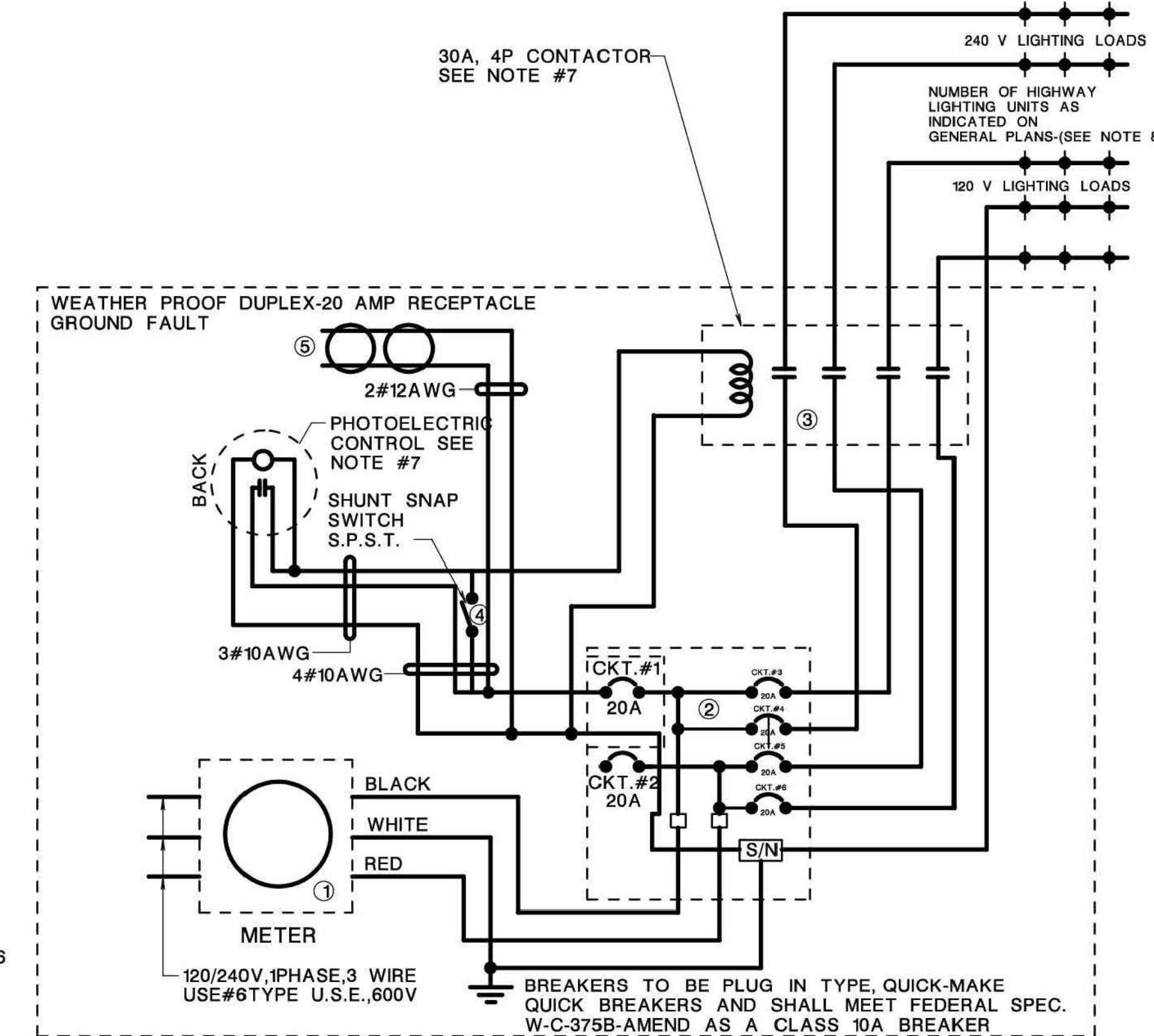
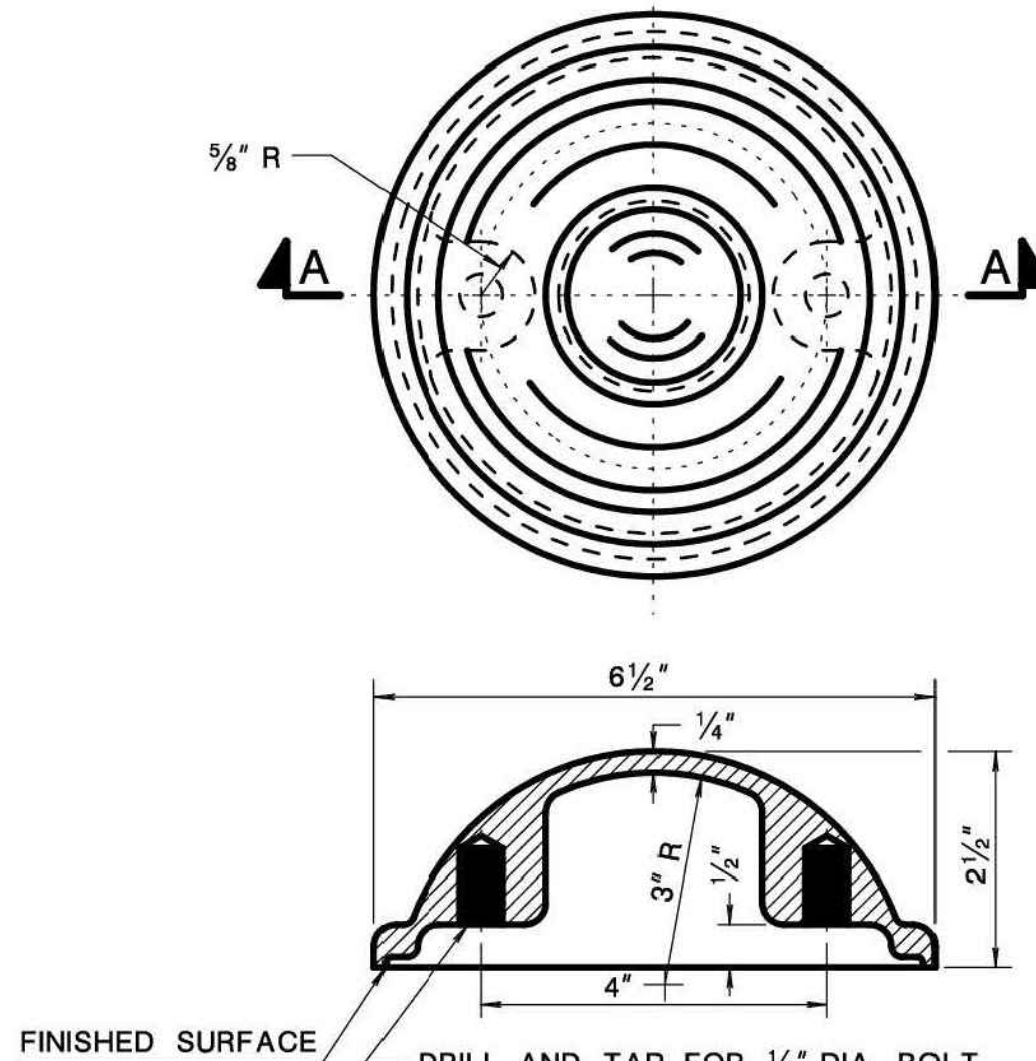
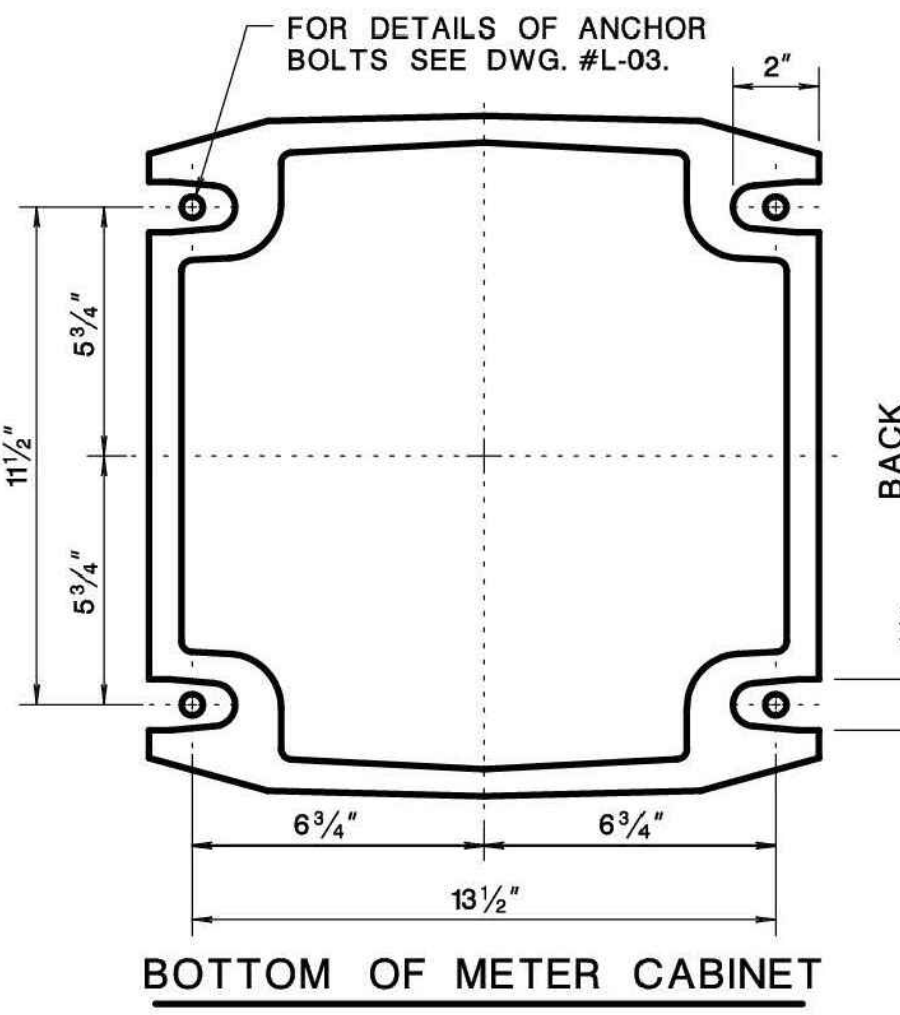
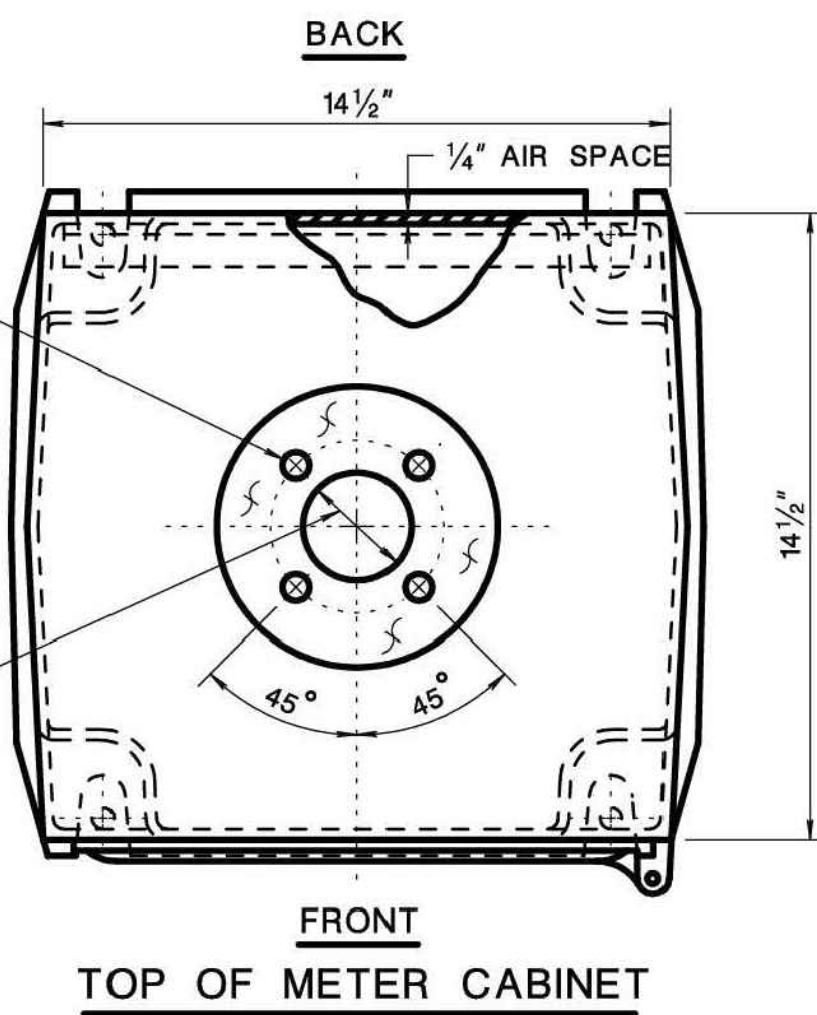


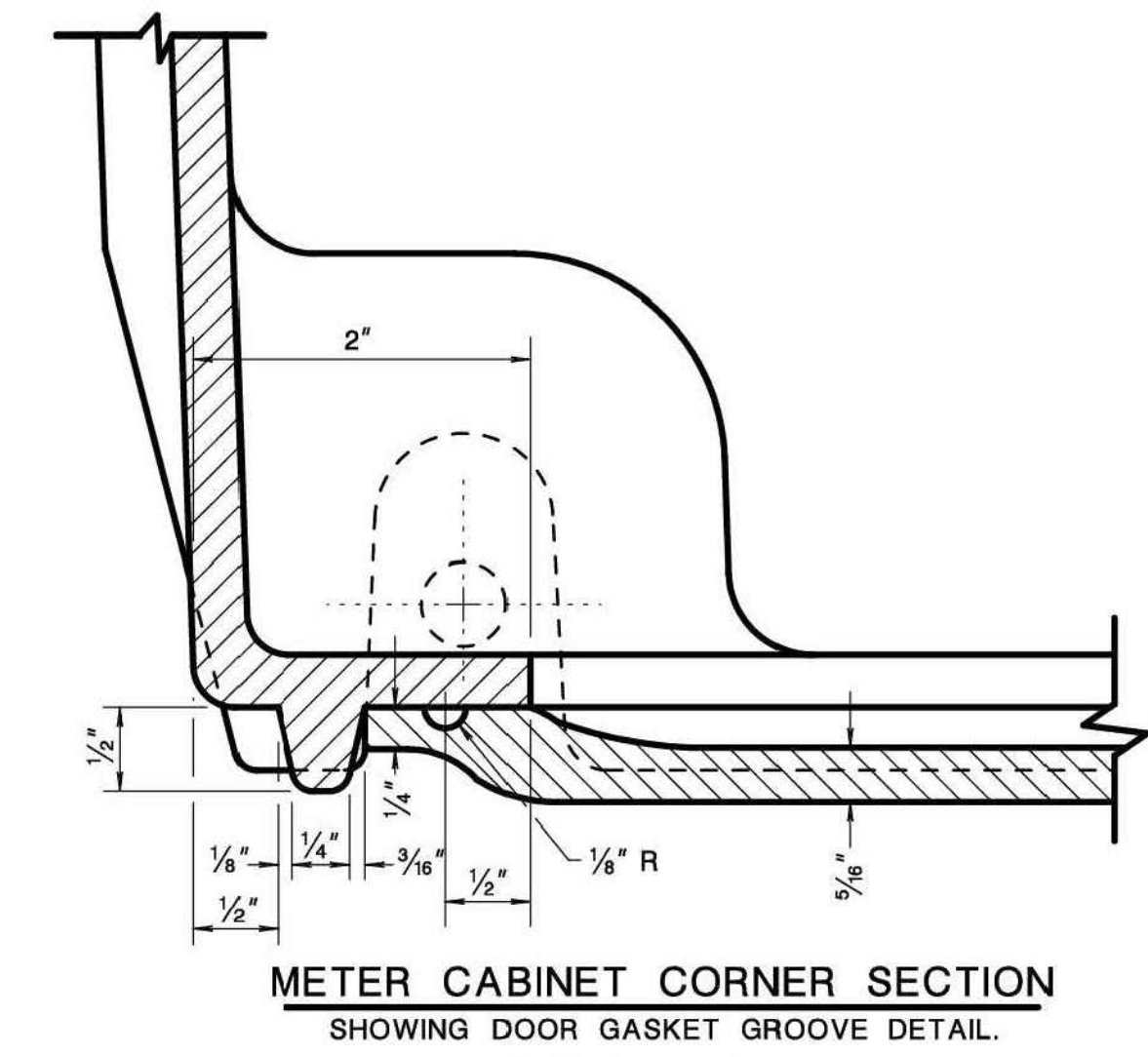
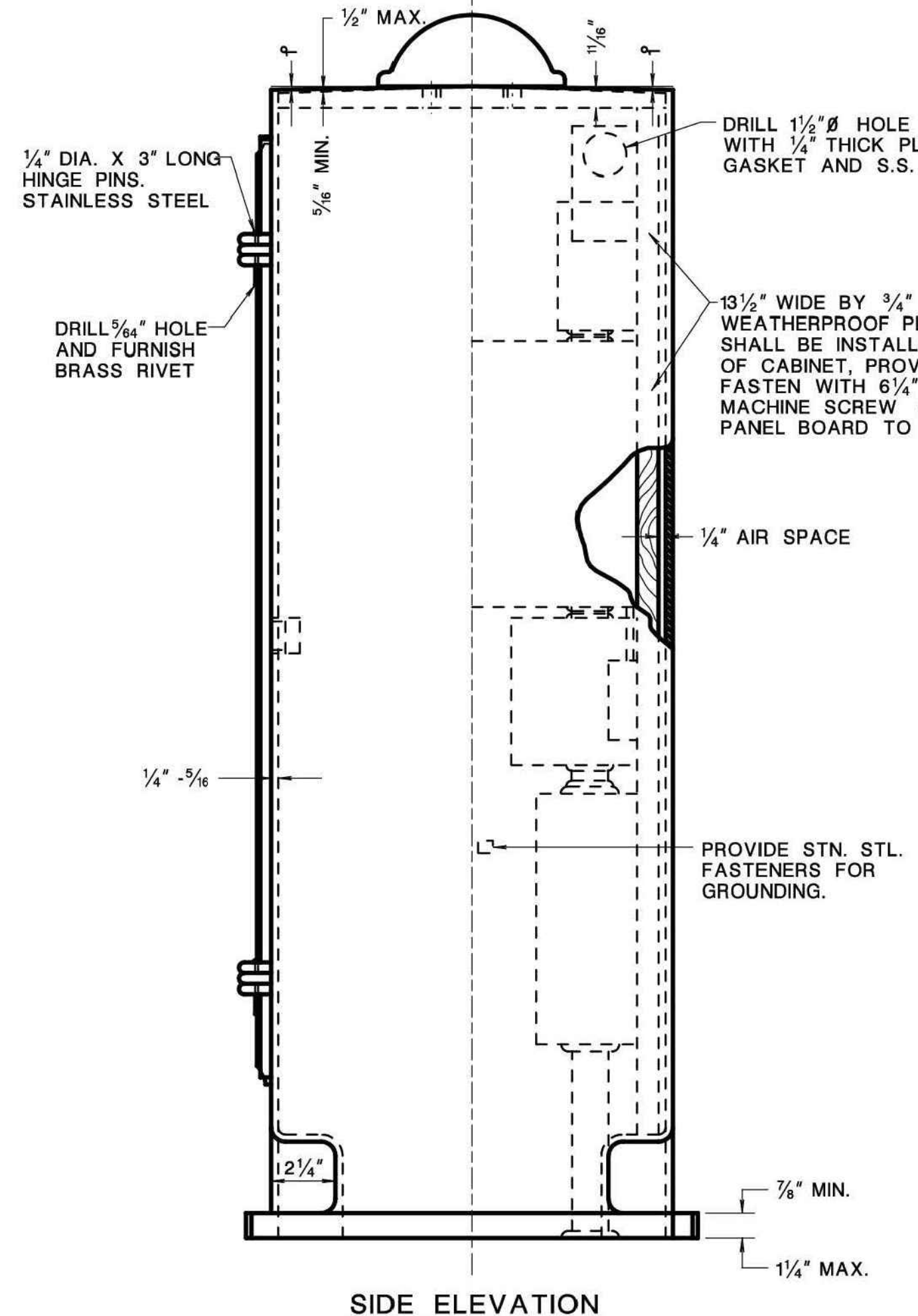
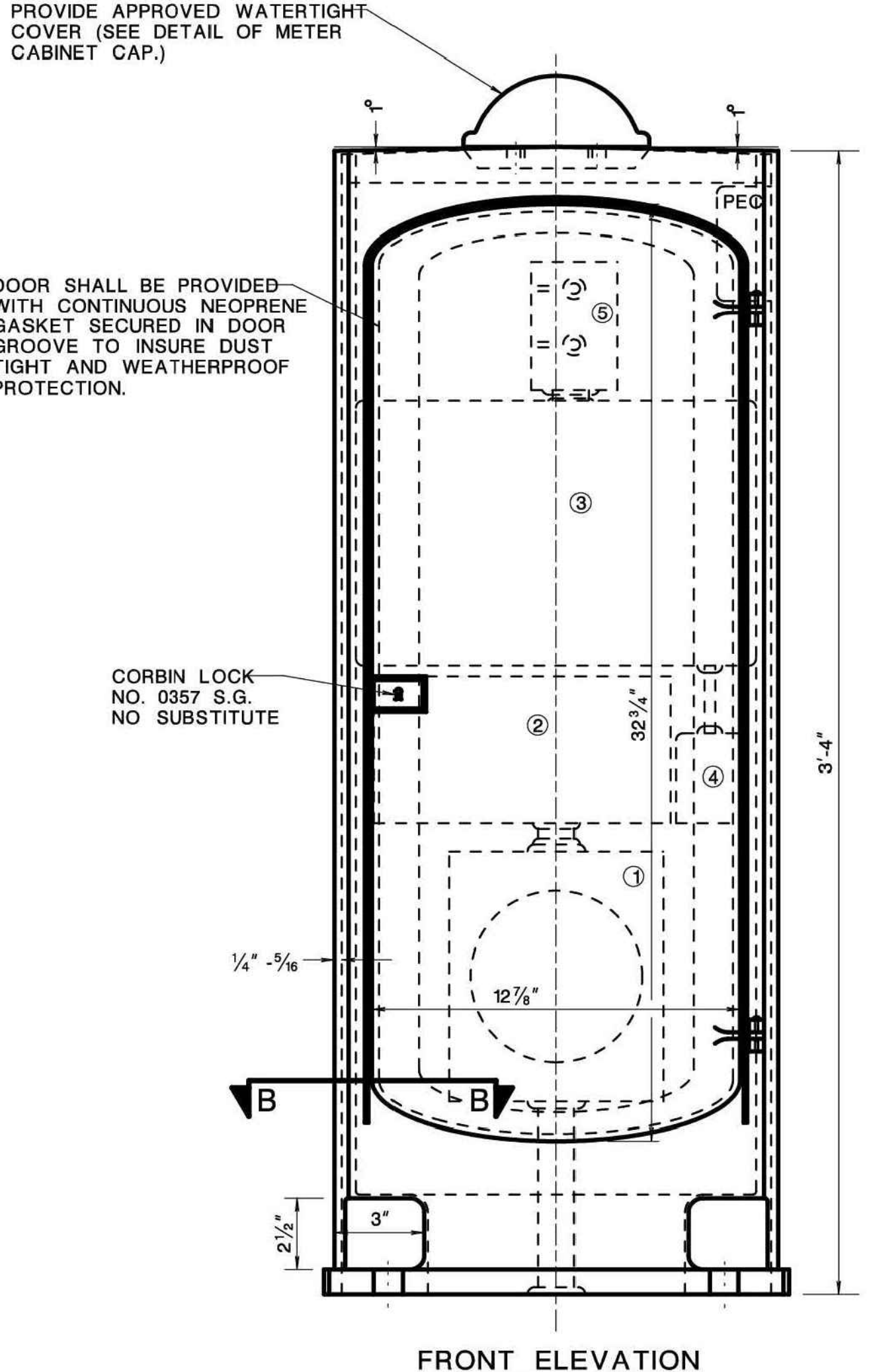
NO.	REVISION	DATE	BY

**METER CABINET DETAILS**  
CITY OF ATLANTIC CITY  
ATLANTIC AVENUE ROAD DIET - PHASE 2B  
CITY OF ATLANTIC CITY  
ATLANTIC COUNTY  
NEW JERSEY



**NOTE:**  
ALL WIRE TO BE #6-AWG-600 VOLT OR AS OTHERWISE SHOWN.

- NOTE**
- METER SOCKET-INSTALLED BY CONTRACTOR-PROVIDED BY UTILITY COMPANY ON REQUEST. (IN JCP&L CO. AREA METER SOCKET IS TO BE INSTALLED AND FURNISHED BY CONTRACTOR)
  - 4/8 CIRCUIT LOAD CENTER WITH ENCLOSURE COMPLETE WITH 6-20A CIRCUIT BREAKERS.
  - MAGNETIC CONTACTOR, 30 AMP, 120 VOLT COIL NEMA 1 ENCLOSURE.
  - PHOTOELECTRIC CONTROL UNIT 15 AMP SHUNT SWITCH IN 2" X 4" HANDY BOX OR EQUIVALENT.
  - WEATHERPROOF, 20A DUPLEX RECEPTICAL GROUND FAULT.
  - IF METER IS NOT REQUIRED, INSTALL 1 1/2" I.D. SEALTITE FLEX CONDUIT AND 1 1/2" I.D. NIPPLE FROM REDUCER COUPLING TO MAIN BREAKER PANEL.
  - FOR METER CABINET TYPE "L", PHOTOELECTRIC CONTROL AND MAGNETIC CONTACTOR FURNISHED AND INSTALLED.
  - THE TOTAL NUMBER OF CIRCUIT BREAKERS ALLOWED IS SIX.



**METER CABINET DETAIL**  
— ALUMINUM ALLOY, COMMERCIAL DESIGNATION 356 A.S.T.M. DESIGNATION B26-56T, ALLOY SG 70A.  
— THE CABINET SHALL BE FREE OF BURRS, SHARP EDGES, DENTS, PINHOLES, AND PARTING LINES AND SHALL HAVE A UNIFORM #30 GRIT FINISH.  
— FOR ALTERNATE FABRICATED METER CABINET SEE DWG. T-35.

**METER CABINET TYPE "L"**  
120/240 VOLT 40 AMP MAX. LOAD

**TYPICAL METER CABINET TYPE "L" DETAILS**  
N.T.S.

- NOTES:**
- COORDINATE ALL UTILITY WORK WITH MR. SCOT HOOVER AT ATLANTIC CITY ELECTRIC. PHONE: (609) 457-1272.
  - CONTRACTOR SHALL PROVIDE LOCKS FOR USE BY THE CITY. COORDINATE KEYING REQUIREMENTS WITH THE PUBLIC WORKS DEPARTMENT.

**FPA FRENCH & PARRELLO ASSOCIATES**  
Corporate Office: 1800 Rt 34, Suite 101  
Wall, New Jersey 07719  
732.312.9800  
FPAengineers.com

**PROGRESS SET  
NOT FOR CONSTRUCTION**  
AMIN H. GOMAA, PE  
PROFESSIONAL ENGINEER, NJ LIC. No. 24GE04842100

DRAWN BY:	DESIGN BY:	CHECKED BY:	SCALE:
AMP	AMP	AHG	AS NOTED
DATE:	SHEET No.		
8-3-2023	14 of 46		
JCR No.:	E.T.O.		
01-02-11-015			