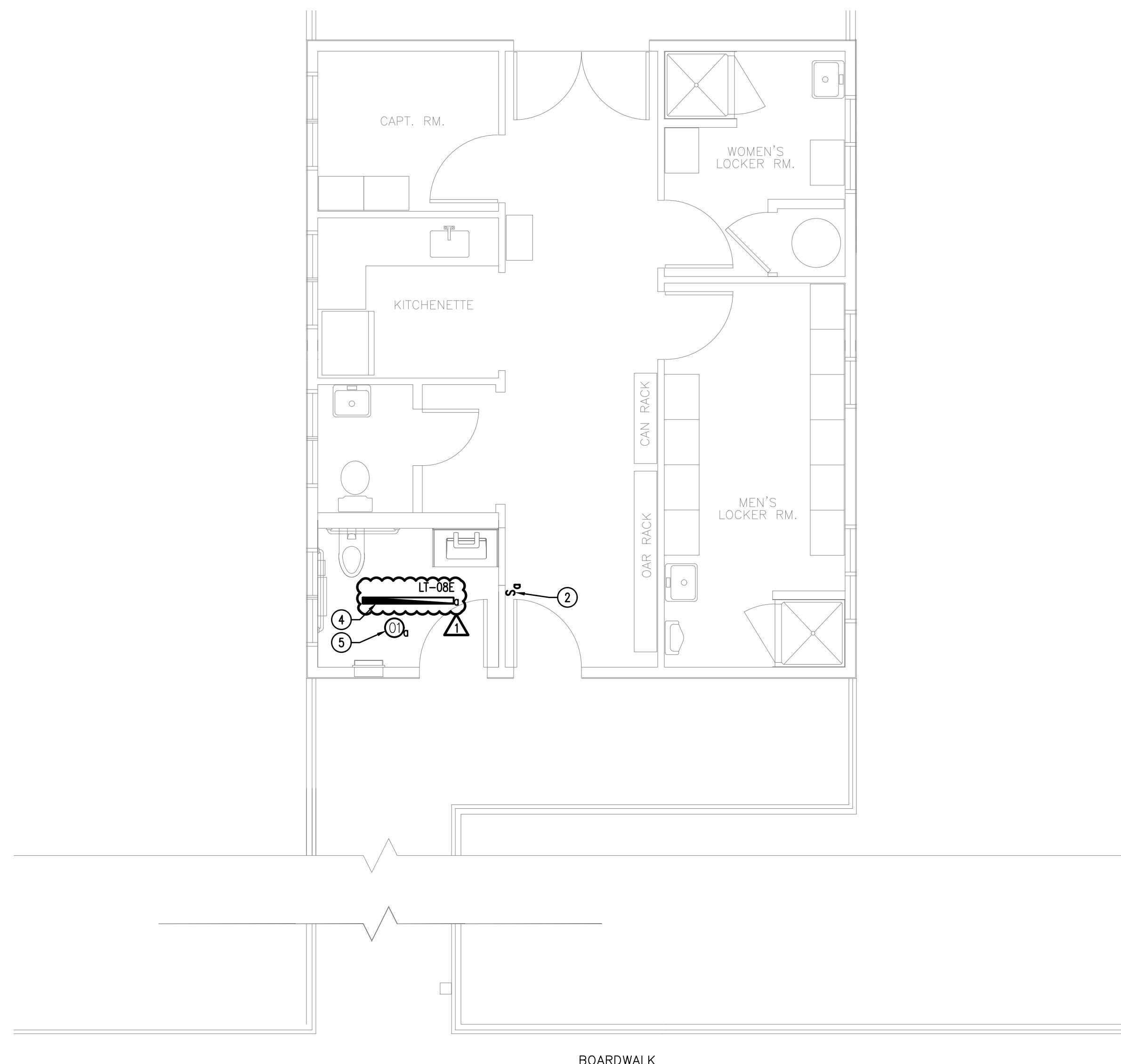


1 NEW WORK FLOOR PLAN — POWER

08 E-101 SCALE: 1/4"=1'-0"



2 NEW WORK CEILING PLAN — LIGHTING

08 E-101 SCALE: 1/4"=1'-0"



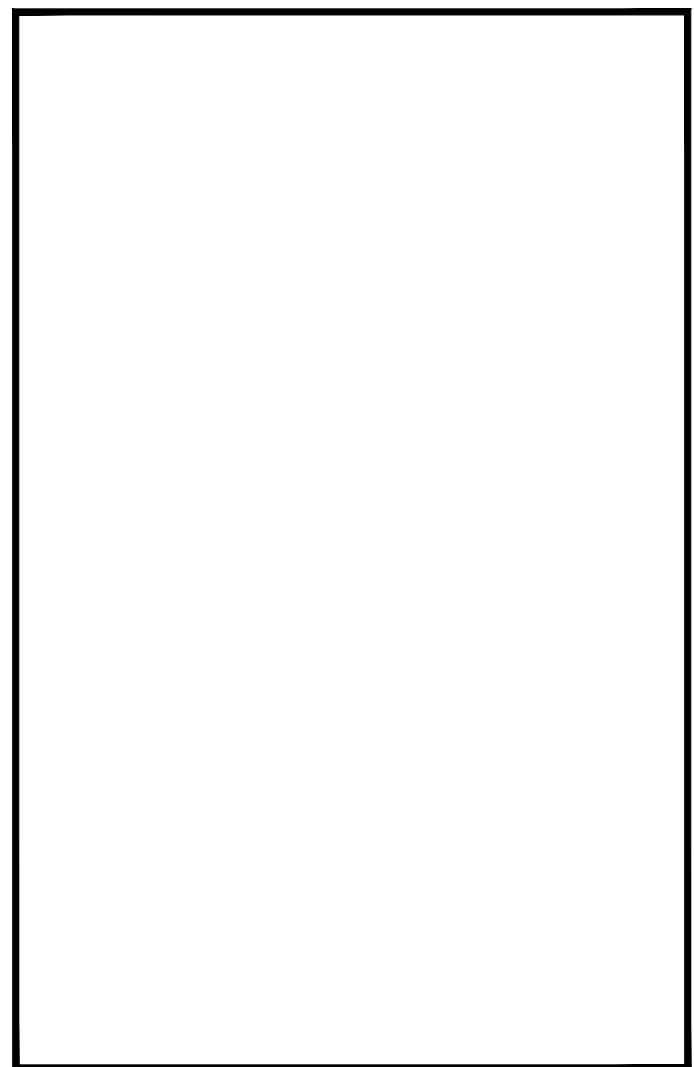
NEW WORK SYSTEM NOTES:

- 1. GENERAL NOTES:**
 - A. REFER TO ELECTRICAL LEAD SHEET, E-001 FOR "NOTES" THAT PERTAIN TO THE SCOPE OF THIS PROJECT.
 - B. REFER TO DETAIL SHEET, E-003 FOR PROJECT DETAILS AND EXECUTION REQUIREMENTS.
 - C. REFER TO SHEET SPECIFICATIONS, E-002 FOR PROJECT DETAILS AND EXECUTION REQUIREMENTS.
 - D. REFER TO DRAWING E-002 FOR LUMINAIRE SCHEDULE.
 - E. ALL WORK SHALL BE PERFORMED IN ACCORDANCE WITH THE 2017 EDITION OF THE NATIONAL ELECTRICAL CODE.
 - F. CONTRACTOR SHALL PROVIDE ALL REQUIRED CONDUITS, RACEWAYS, CONDUCTORS, AND OTHER EQUIPMENT NECESSARY TO PROVIDE A COMPLETE WORKING SYSTEM.
 - G. CONTRACTOR SHALL INSTALL ALL (N) EQUIPMENT IN STRICT ACCORDANCE WITH THE MANUFACTURER'S WRITTEN INSTRUCTIONS AND SHALL MAINTAIN ALL CLEARANCES AS NOTED WITHIN THE WRITTEN INSTRUCTIONS.
 - H. ELECTRICAL CONTRACTOR TO PROVIDE AND INSTALL ALL ELECTRICAL EQUIPMENT, WIRING AND RACEWAY, AND MAKE ALL CONNECTIONS TO/FROM PANELBOARDS, DISCONNECT SWITCHES, ADJUSTABLE SPEED DRIVES, MOTOR STARTERS, AND THE END USE EQUIPMENT NECESSARY FOR A FULLY OPERATIONAL SYSTEM. COORDINATE WITH MECHANICAL CONTRACTOR.
 - I. ALL RACEWAYS PENETRATING FIRE RATED PARTITIONS, WALLS, AND CEILINGS SHALL BE SEALED USING APPROVED FIRE RATED SEALANT TO MATCH THE REQUIRED WALL FIRE RATING. SEE DRAWING E-003 SUBMIT UL APPROVED METHODS FOR FIRESTOPPING AT EACH SPECIFIC LOCATION.
 - J. ALL POWER SHUT DOWNS MUST BE COORDINATED WITH THE OWNER'S REPRESENTATIVE.
 - K. THE ELECTRICAL CONTRACTOR SHALL MAKE AN ON SITE INSPECTION TO DETERMINE THE FULL SCOPE OF WORK AND WORKING CONDITIONS BEFORE SUBMITTING A PROPOSAL.
 - L. THE ELECTRICAL CONTRACTOR SHALL PROVIDE NEW TYPEWRITTEN PANEL SCHEDULES WITHIN THE SCOPE OF THIS PROJECT. THIS INCLUDES ALL PANELS EVEN IF ONLY A FEW CIRCUITS WERE CHANGED AS A RESULT OF THIS PROJECT. WHERE ACTUAL FIELD CONDITIONS REQUIRE DIFFERENT CIRCUIT NUMBERS THAN THOSE INDICATED ON PLANS THE CONTRACTOR SHALL ADVISE OWNER OF CHANGES ON REQUIRED AS-BUILT DRAWINGS.
 - M. ALL LIGHTING AND ASSOCIATED CONTROLS SHALL COMPLY WITH ASHRAE 90.1 2016.
 - N. ELECTRICAL CONTRACTOR SHALL BE REQUIRED TO VERIFY EXISTING DEMAND LOADS ON EXISTING ELECTRICAL EQUIPMENT THAT IS BEING MODIFIED AS PART OF THIS SCOPE OF WORK AND ADVISE ENGINEER OF RECORD/OWNER WHERE THE EXISTING AND NEW EQUIPMENT LOADS EXCEED THE RATING OF THE EXISTING ELECTRICAL EQUIPMENT.

NEW WORK KEYED NOTES:

GENERAL: NEW WORK NOTES ARE INDICATED WITH THE FOLLOWING SYMBOL Ⓧ AND ARE NUMBERED AS FOLLOWS:

- 1 PROVIDE NEW/UTILIZE CIRCUIT BREAKER IN EXISTING LOCAL ELECTRICAL PANEL FOR NEW EXHAUST FAN POWER REQUIREMENTS. UTILIZE 2#12 & 1#12 G - 3/4" C.
- 2 PROVIDE NEW SWITCH FOR CONTROL OF NEW LIGHTS. UTILIZE 120V LIGHTING CIRCUIT FOR POWER. PROVIDE NEW STAINLESS STEEL COVER PLATE. UTILIZE 2#12 & 1#12 G - 3/4" C. COORDINATE FINAL LOCATION WITH OWNER/ARCHITECT.
- 3 PROVIDE NEW DEDICATED 20A/1P GFCI CIRCUIT BREAKER IN EXISTING ELECTRICAL PANEL FOR EACH POWERED SINK. PROVIDE NEW RECEPTACLE AT EACH SINK IN LOCKABLE ENCLOSURE. UTILIZE 2#12 & 1#12 G - 3/4" C. REFER TO MANUFACTURER INSTALLATION REQUIREMENTS FOR FINAL ELECTRICAL REQUIREMENTS AND RECEPTACLE LOCATIONS.
- 4 UTILIZE EXISTING CIRCUIT BREAKER IN EXISTING ELECTRICAL PANEL FOR NEW LIGHTING POWER REQUIREMENTS. UTILIZE 2#12 & 1#12 G - 3/4" C.
- 5 PROVIDE NEW LINE VOLTAGE CEILING MOUNTED OCCUPANCY SENSOR FOR CONTROL OF NEW LIGHTS. UTILIZE 120V 20A LIGHTING CIRCUIT FOR POWER. UTILIZE 2#12 & 1#12 G - 3/4" C.
- 6 UTILIZE EXISTING 50A/2P CIRCUIT BREAKER IN EXISTING LOCAL ELECTRICAL PANEL FOR NEW WATER HEATER. PROVIDE NEW 60A FUSIBLE DISCONNECT WITH 50A FUSES. SPLICE/EXTEND EXISTING CONDUCTORS/CONDUIT IN KIND, AS REQUIRED.
- 7 PROVIDE NEW/UTILIZE 20A/1P CIRCUIT BREAKER IN EXISTING ELECTRICAL PANEL FOR NEW RECEPTACLE TO SUPPLY EMERGENCY WATER HEATER VALVE SHUT-OFF. UTILIZE 2#12 & 1#12 G - 3/4" C. COORDINATE FINAL LOCATION WITH PLUMBING CONTRACTOR.



Professional Engineer
 Anthony H. Caucci
 New Jersey Lic. # 44806



520 South Burnt Mill Road
 Voorhees, New Jersey 08043
 (856) 427-0200
 www.concord-engineering.com
 CEG Project No: 8C19587.00

AC Boardwalk Restroom
 Renovation
 Atlantic City, NJ

SUBMISSIONS

NO.	DATE	DESCRIPTION
1	2020 07 13	ADDENDUM 04
	2020 07 07	ISSUED FOR DCA REVIEW
NO.	DATE	DESCRIPTION

DRAWING TITLE:
 NEW HAMPSHIRE AVENUE
 ELECTRICAL NEW WORK
 FLOOR PLANS
 POWER & LIGHTING

ALL WORK SHOWN IS THE RESPONSIBILITY OF THE ELECTRICAL SUBCONTRACTOR, UNLESS NOTED OTHERWISE.

DRAWN BY:	CEG	DRAWING NO.	08 E-101
REVIEWED BY:	CEG	PROJECT NO. 19074.00	