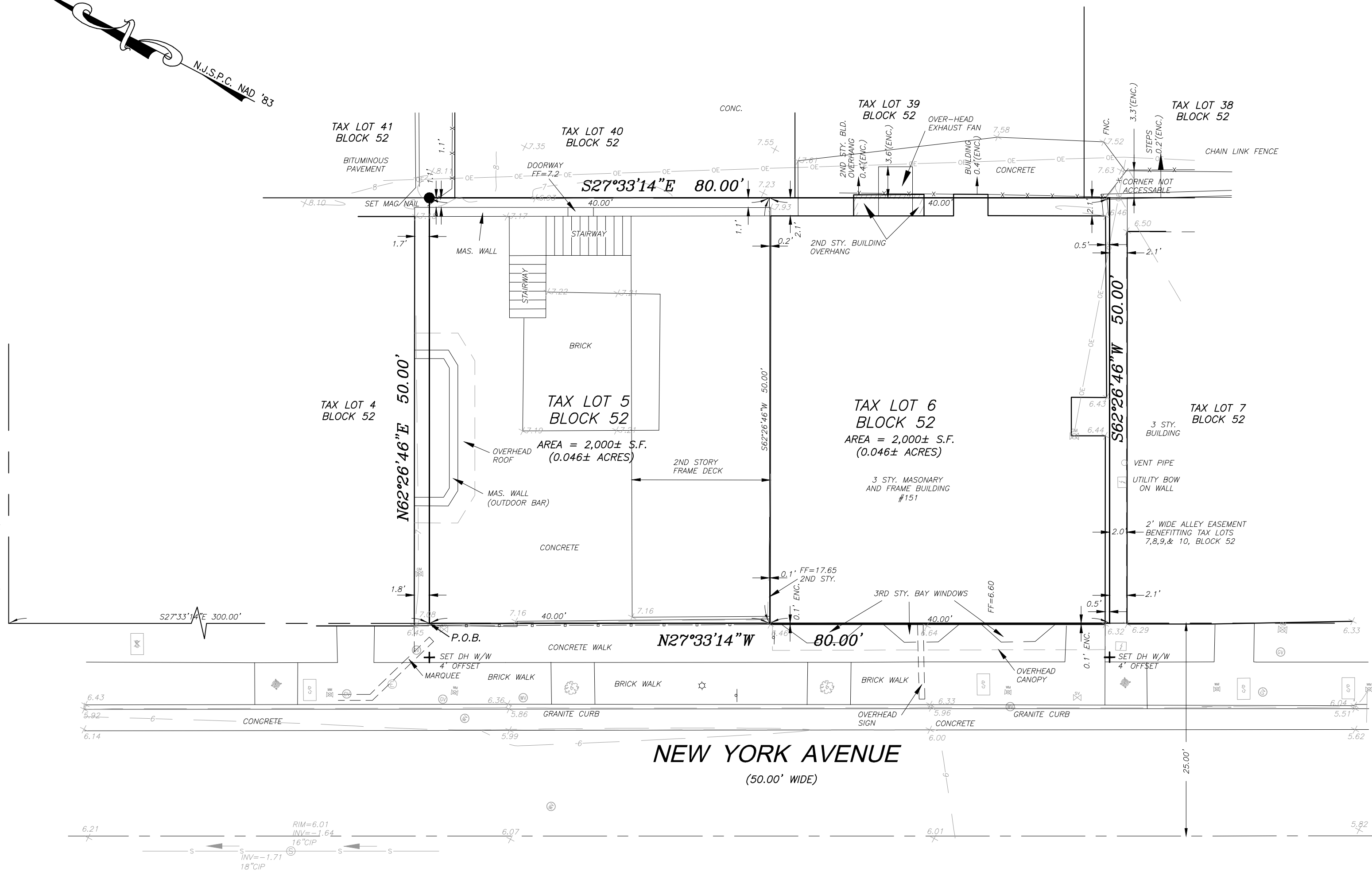


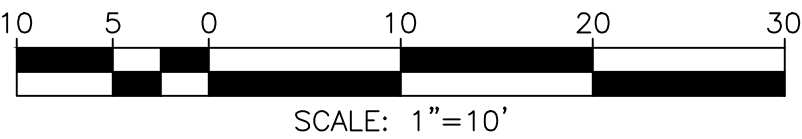
PACIFIC AVENUE
(60.00' WIDE)



- NOTES:**
- THIS SURVEY WAS PREPARED WITHOUT THE BENEFIT OF A REPORT OF TITLE AND IS SUBJECT TO ANY EASEMENTS OF RECORD AND OTHER PERTINENT FACTS WHICH A CURRENT TITLE REPORT WOULD DISCLOSE.
 - REFERENCE DEEDS:
INST. #2017031576 (TAX LOT 5, BLOCK 52)
INST. #2017031577 (TAX LOT 6, BLOCK 52)
 - HORIZONTAL DATUM DEPICTED HEREON REFERENCED TO THE NEW JERSEY STATE PLANE COORDINATE SYSTEM, NAD '83 BASED ON GPS OBSERVATIONS PERFORMED BY THIS OFFICE.
 - VERTICAL DATUM DEPICTED HEREON REFERENCED TO NAVD '88, BASED ON GPS OBSERVATIONS PERFORMED BY THIS OFFICE.
 - UNDERGROUND UTILITIES ARE NOT NECESSARILY COMPLETE AND MUST BE FIELD VERIFIED PRIOR TO ANY EXCAVATION AND/OR GROUND DISTURBANCE. CONTRACTOR/EXCAVATOR MUST CALL N.J. ONE CALL (DIAL 811 OR 800-272-1000) PRIOR TO ANY GROUND DISTURBANCE.
 - THE REVISED PRELIMINARY NATIONAL FLOOD INSURANCE PROGRAM FLOOD INSURANCE RATE MAP (BEST AVAILABLE DATA) FOR ATLANTIC COUNTY, NEW JERSEY, PANEL 456 OF 457, MAP No. 34001C0456G, REVISED PRELIMINARY DATE JANUARY 30, 2015, INDICATES THE SUBJECT PROPERTY LINES IN ZONE AE (EL10, NAVD '88)
 - SANITARY SEWER PIPE SIZES OBTAINED FROM THE ATLANTIC CITY SEWERAGE COMPANY SEWER INVENTORY MAP, DRAWING No. 7, DATED 02/02/07.

LEGEND

- | | | | |
|---|--------------------|---|---------------------|
| ⊕ | CABLE MANHOLE | — | PROPERTY LINE |
| ✕ | DRILL HOLE & WINGS | — | ADJOINING LOT LINE |
| □ | ELECTRIC BOX | — | 1' CONTOUR INTERVAL |
| ⊕ | ELECTRIC MANHOLE | — | 5' CONTOUR INTERVAL |
| ⊕ | FIRE HYDRANT | — | CHAIN LINK FENCE |
| ⊕ | GAS VALVE | — | CURB |
| ⊕ | IRON PIN | — | EDGE OF PAVEMENT |
| ⊕ | LID WITH CLEAN OUT | — | METAL FENCE |
| ⊕ | LIGHT | — | OVER-HEAD WIRES |
| ⊕ | LIGHT POLE | — | SANITARY SEWER LINE |
| ⊕ | MANHOLE | | |
| ⊕ | SEWER MANHOLE | | |
| ⊕ | SIGN | | |
| ⊕ | TELEPHONE MANHOLE | | |
| ⊕ | TREE | | |
| ⊕ | UTILITY POLE | | |
| ⊕ | WATER METER | | |
| ⊕ | WATER VALVE | | |



DATE	NO.	REVISIONS	BY	APPR.
------	-----	-----------	----	-------

BOUNDARY AND TOPOGRAPHIC SURVEY
TAX LOTS 5 AND 6, BLOCK 52
 ATLANTIC CITY, ATLANTIC COUNTY, NJ
 PREPARED FOR:
 ZENITH SHAH



VARGO ASSOCIATES
 Surveying and Mapping
 P.O. Box 647, Franklinville New Jersey
 08322 (856) 694-1716

© COPYRIGHT 2017, VARGO ASSOCIATES ALL RIGHTS RESERVED
 Certificate of Authorization # 24GA28021200

SCALE	DRAWN BY	DATE	FIELD BK./PG.	PROJECT NO.	SHEET NO.
1" = 10'	EC	06/06/19	N/A	18175-5&6	1 OF 1

Edward J. Constantine Jr.
EDWARD J. CONSTANTINE JR.
N.J. Professional Land Surveyor License No. GS 36714
 PA. Professional Land Surveyor License No. SU055717E
 DE. Professional Land Surveyor License No. S6-0000627