

© 2019 - Kitchen & Associates, All planning and architectural concepts shown on this document are the intellectual property of Kitchen & Associates

756 Haddon Avenue
 Collingswood, NJ 08108
 856.854.1880
 kitchenandassociates.com

COMP: 21A000082770
 Stephen L. Schuch
 LIC # 21A00095800

Date:	04-08-2019
Job #:	17159
Drawn:	SB
Mngr:	JH
Rev # / Name	Date

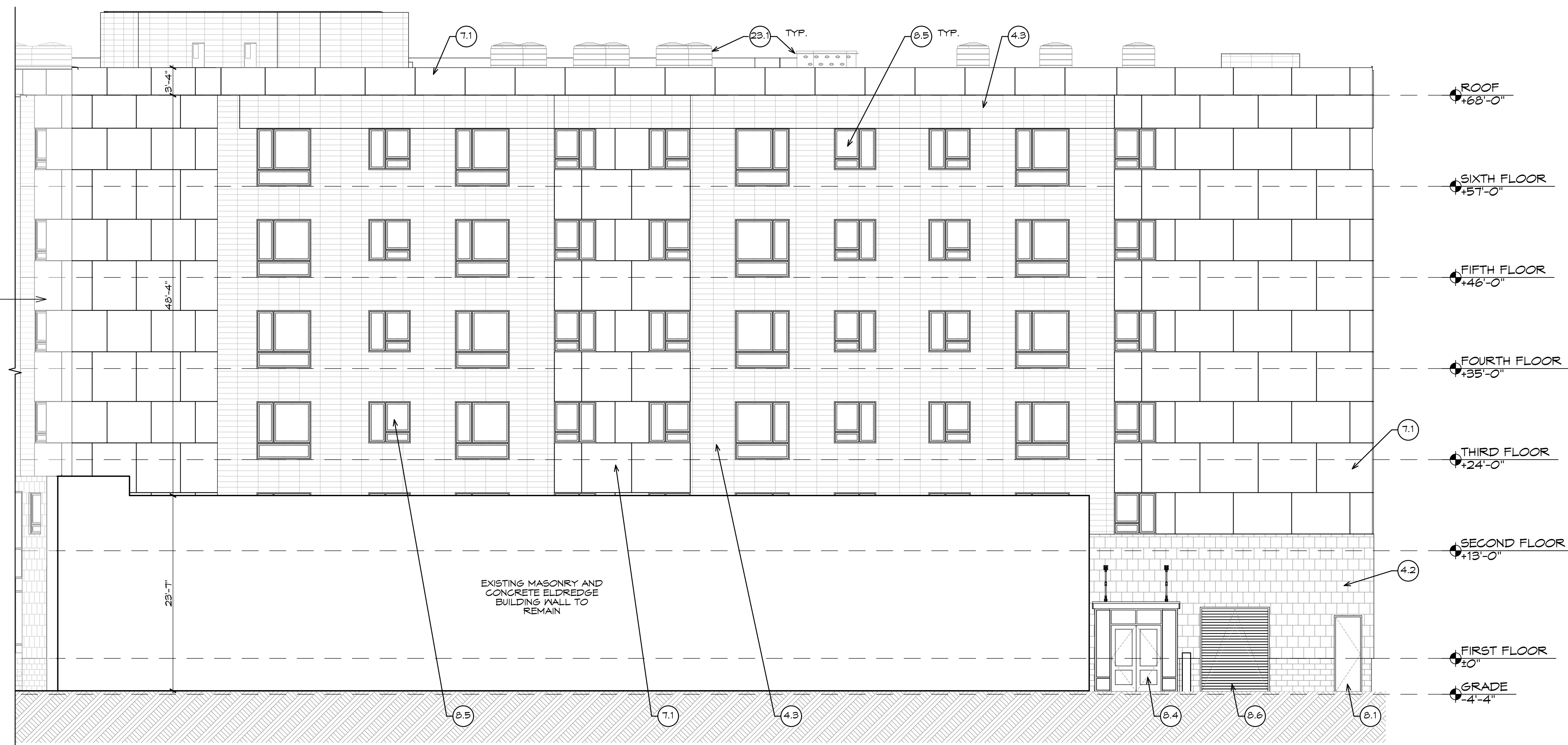


STOCKTON UNIVERSITY ATLANTIC CITY CAMPUS, PHASE 2
 16 S. Providence Avenue
 Atlantic City, NJ 08401

SCHMATIC DESIGN

A06
 EXTERIOR
 ELEVATIONS

SEE ATLANTIC AVE ELEVATION



1 **HARTFORD AVE (SOUTH) ELEVATION**
 SCALE: 1/8" = 1'-0"

SEE COURTYARD ELEVATIONS



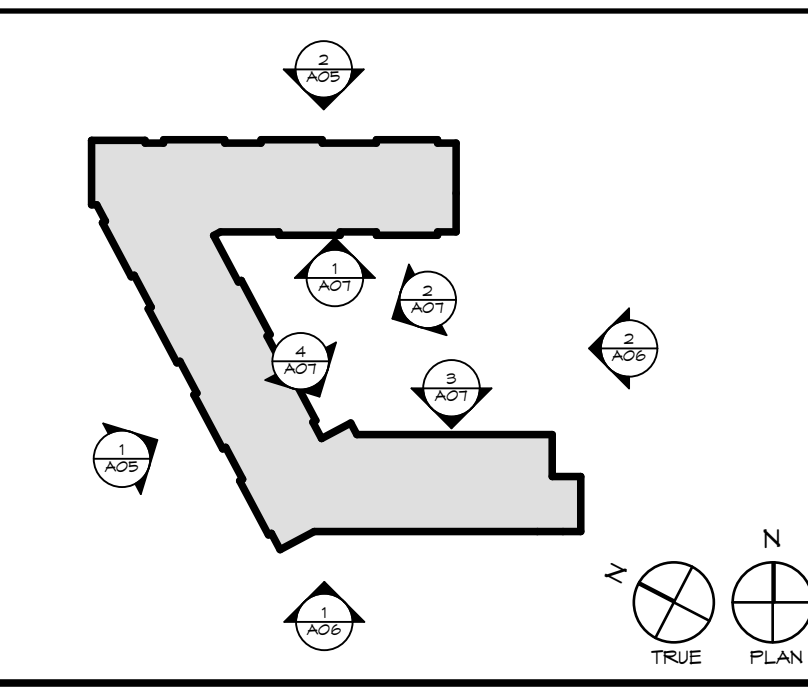
2 **PACIFIC AVE (EAST) ELEVATION**
 SCALE: 1/8" = 1'-0"

NOTE: FENCES & GATES NOT SHOWN FOR CLARITY

ELEVATION NOTES / KEY NOTES

- | | | |
|---|--|---|
| DIVISION 3 - CONCRETE
3.1 ADA COMPLIANT RAMP, STAIR AND ENTRY PATIO FLUSH WITH INTERIOR FINISHED FLOOR. | 7.3 RAINSCREEN - TYPE 2
7.4 ALUMINUM GUTTER / DOWNSPOUT SYSTEM TO CAST IRON BOOTS & CLEANOUTS
7.5 HORIZONTAL CORRUGATED METAL PANEL | 10.2 ALUMINUM CANOPY WITH HANGING RODS |
| DIVISION 4 - MASONRY
4.1 GROUND-FACE CMU VENER - SIZE 1
4.2 GROUND-FACE CMU VENER - SIZE 2
4.3 TERRACOTTA PANEL - COLOR 1
4.4 TERRACOTTA PANEL - COLOR 2
4.5 TERRACOTTA PANEL - COLOR 3
4.6 GROUND-FACE CMU BUILT-IN PLANTER | DIVISION 8 - DOORS & WINDOWS
8.1 PAINTED HOLLOW METAL DOOR & FRAME
8.2 ALUMINUM CURTAINWALL SYSTEM
8.3 ALUMINUM STOREFRONT SYSTEM
8.4 STOREFRONT DOOR
8.5 VINYL WINDOWS
8.6 INSULATED COILING OVERHEAD DOOR | DIVISION 23 - HVAC
23.1 ROOFTOP HVAC EQUIP. |
| DIVISION 7 - THERMAL & MOISTURE PROTECTION
7.1 COMPOSITE METAL PANEL SYSTEM
7.2 RAINSCREEN - TYPE 1 | DIVISION 10 - SPECIALTIES
10.1 INDOOR / OUTDOOR FIREPLACE | |

KEY PLAN



B:\McCloud_bim\proj\local - BIM\cloud\17159 - Eldredge - Comp - EXTERIOR ELEVATIONS Monday, April 8, 2019 8:48 AM