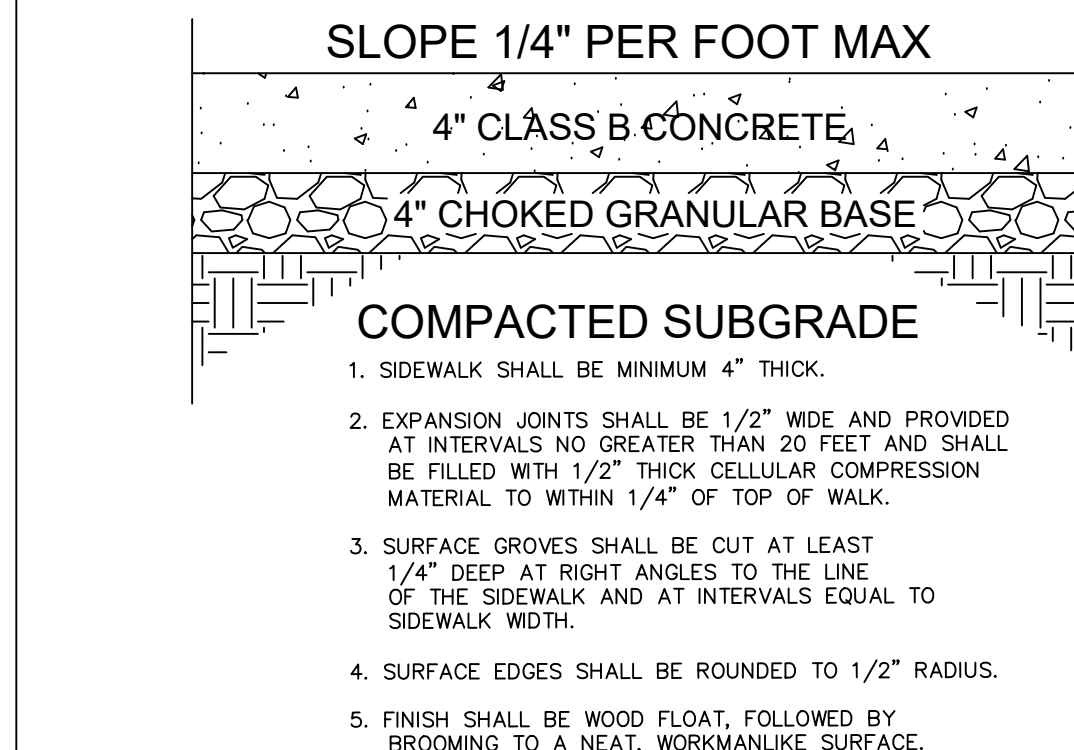
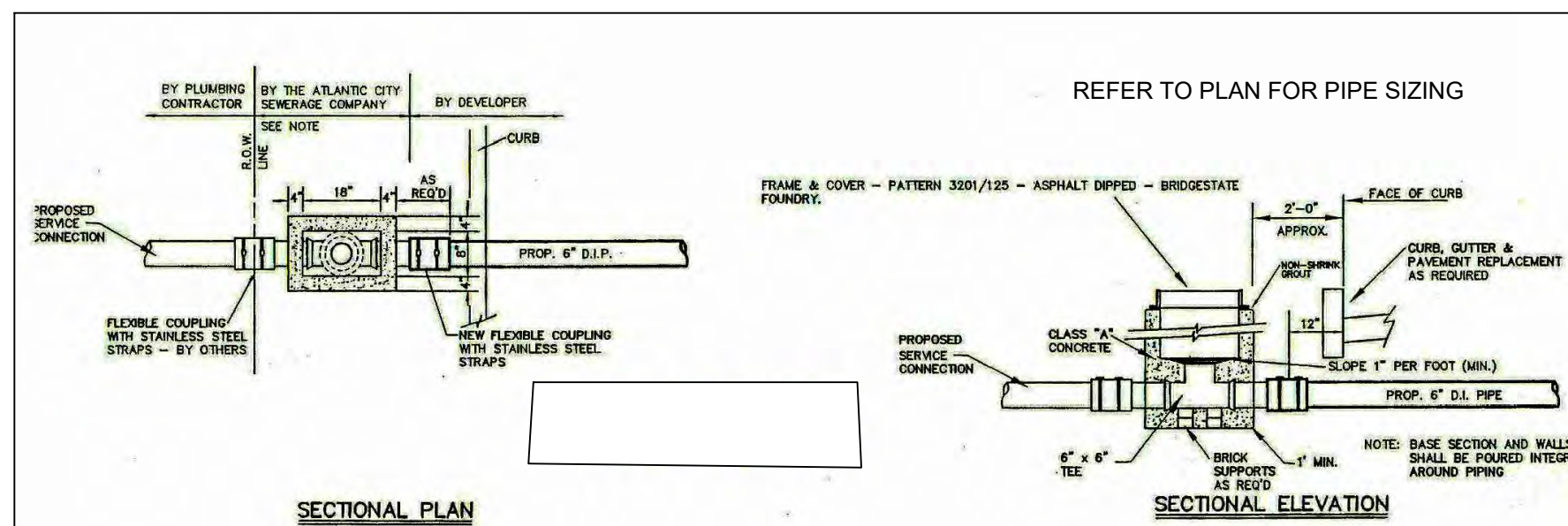


1 POROUS PAVEMENT SECTION

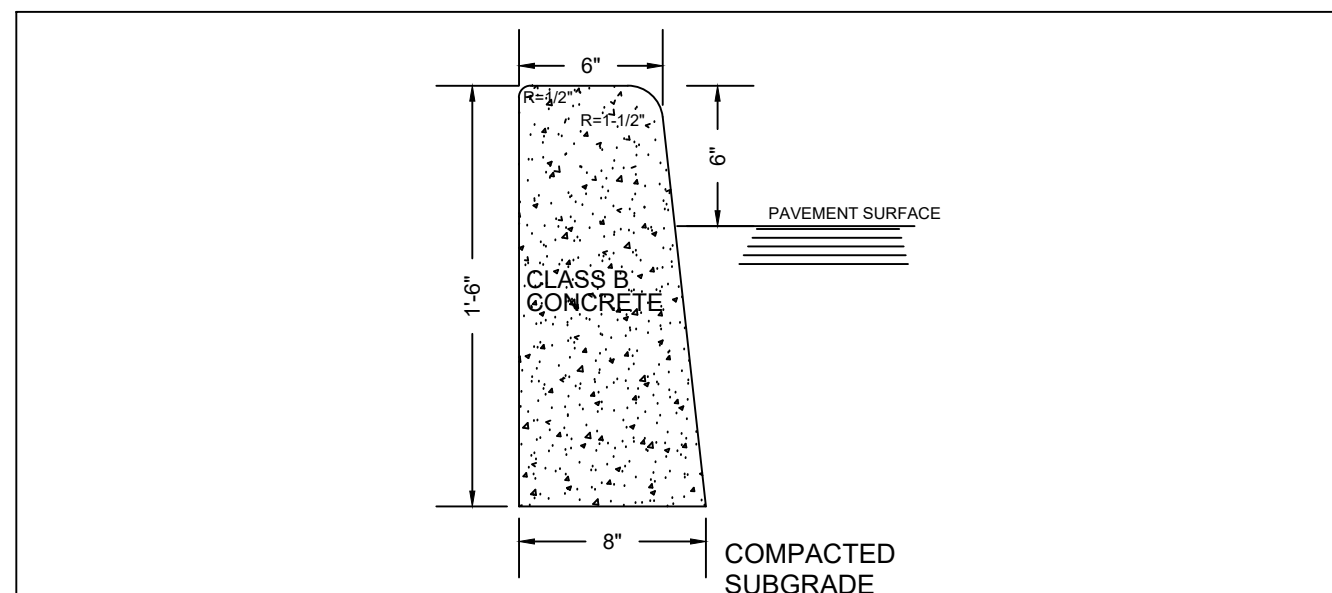
ALL CONCRETE UTILIZED FOR INSTALLATION OF SIDEWALK SHALL BE CLASS B, MINIMUM DESIGN STRENGTH OF 4000 PSI AT 28 DAYS, AIR ENTRAINED



2 SIDEWALK DETAIL

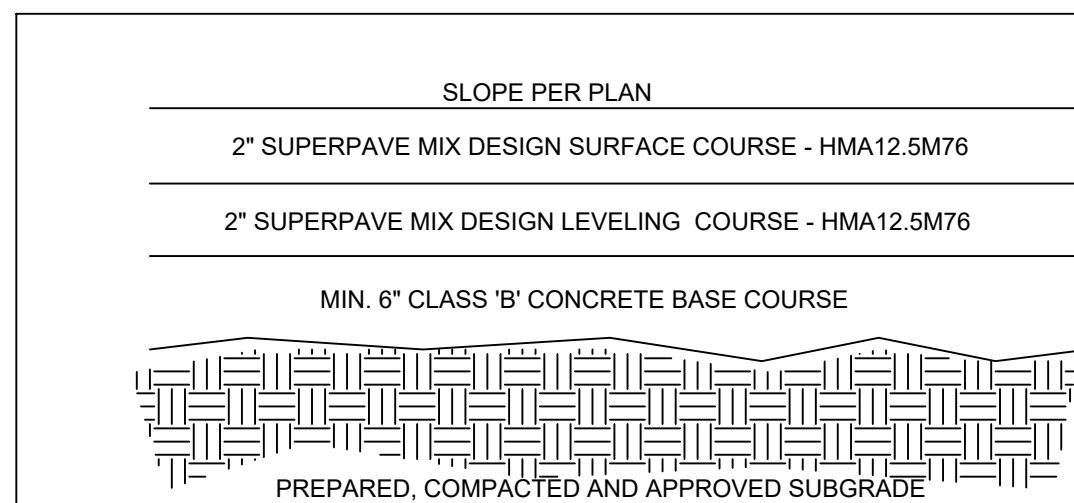


3 SANITARY SERVICE BOX DETAIL

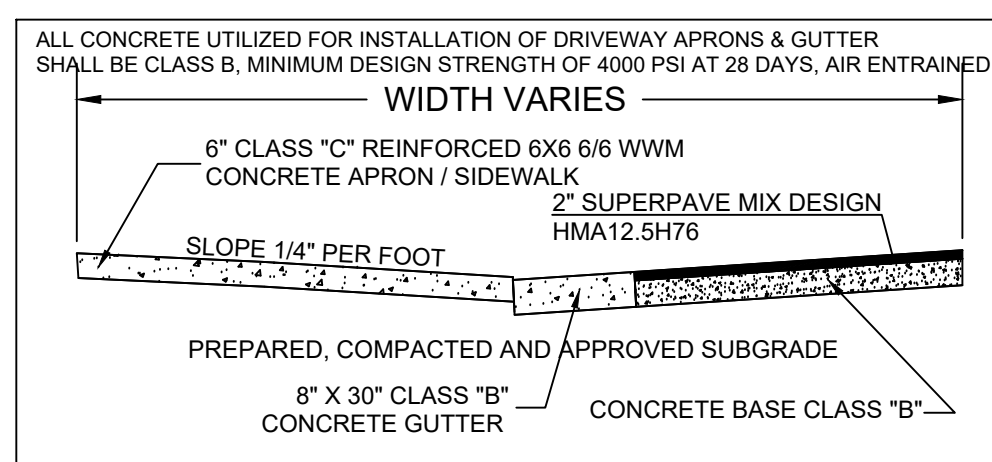


ALL CONCRETE UTILIZED FOR INSTALLATION OF SIDEWALK SHALL BE CLASS B, MINIMUM DESIGN STRENGTH OF 4000 PSI AT 28 DAYS, AIR ENTRAINED

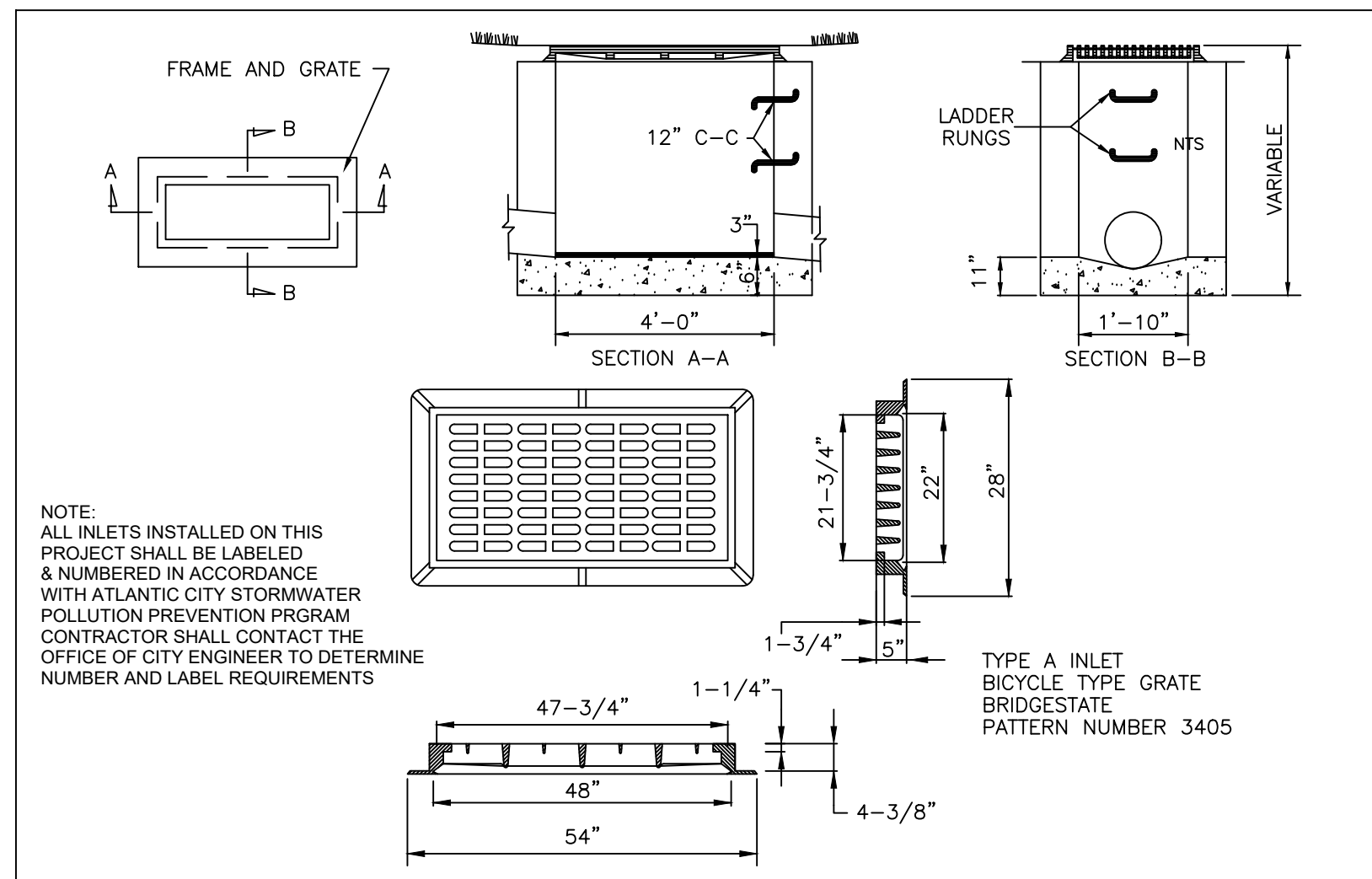
4 CONCRETE CURB DETAIL (ON-SITE)



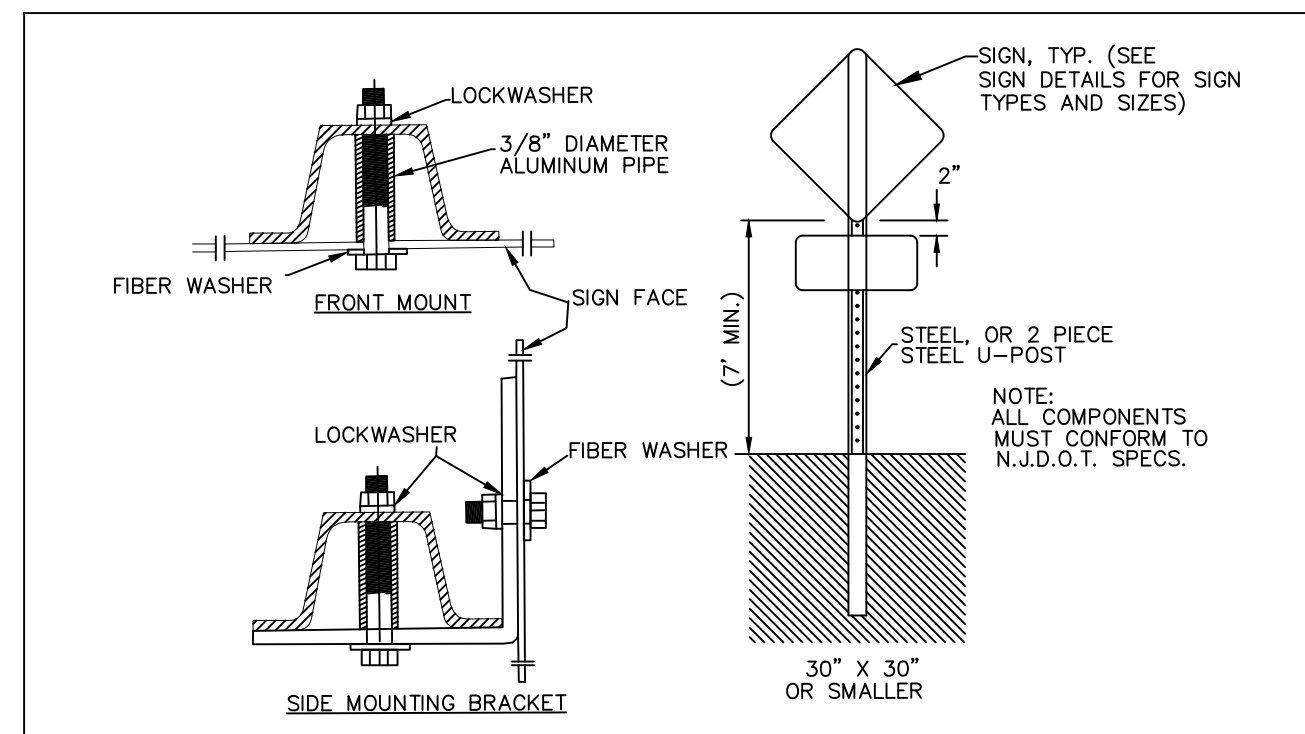
5 ASPHALT PAVING DETAIL (CITY R.O.W.)



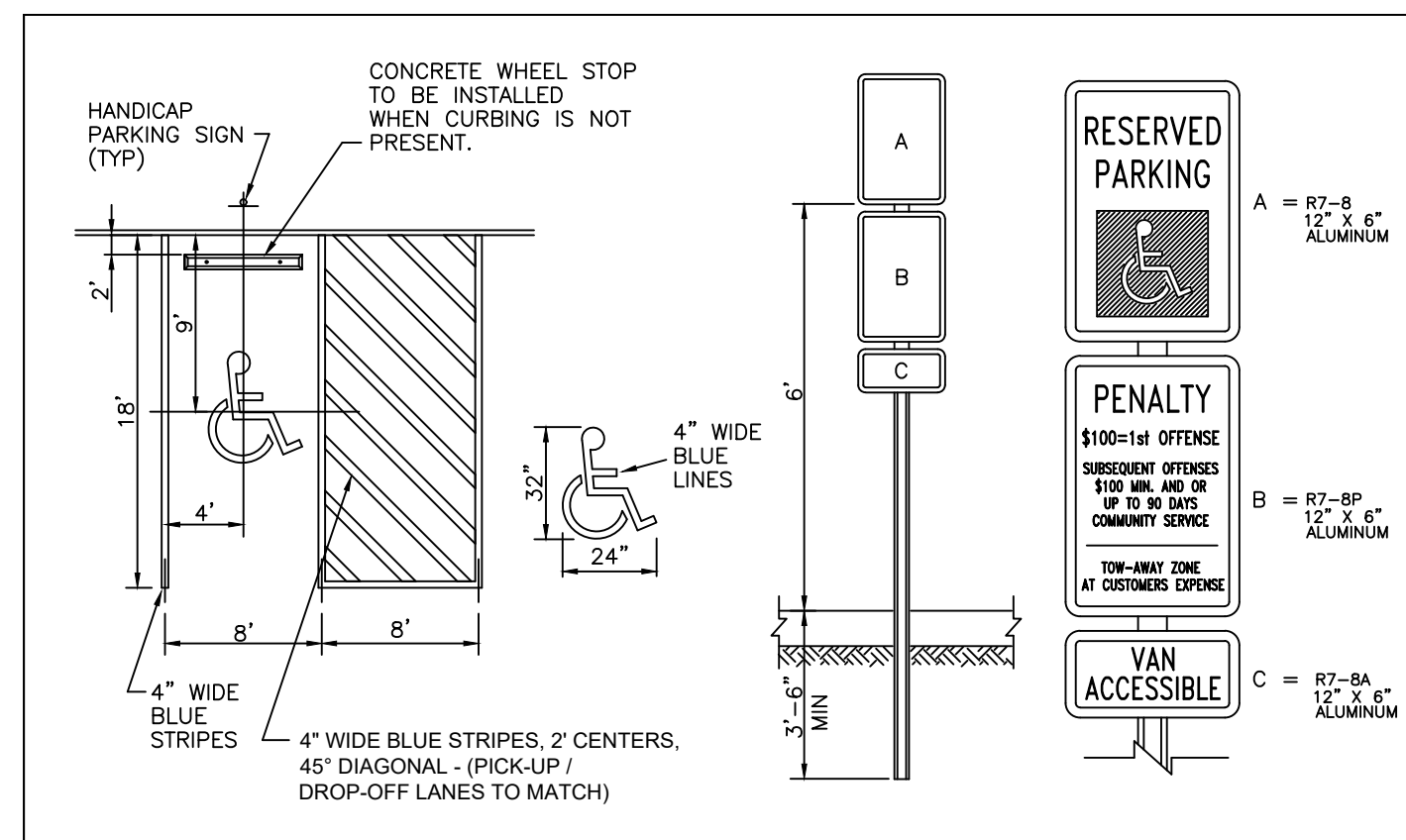
6 SECTION THROUGH ROADWAY (INCLUDING CONCRETE GUTTER)



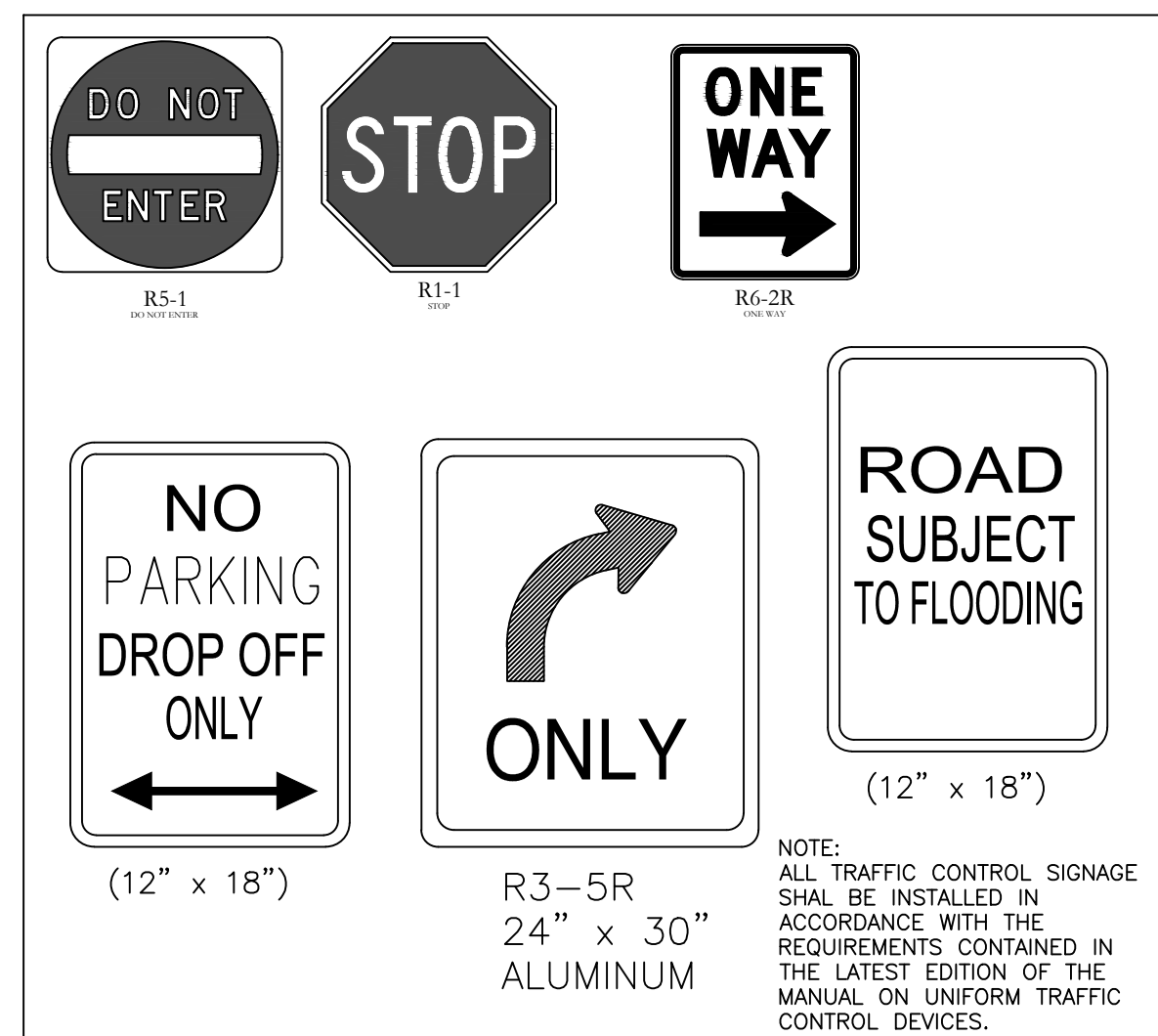
7 TYPE 'A' INLET DETAIL



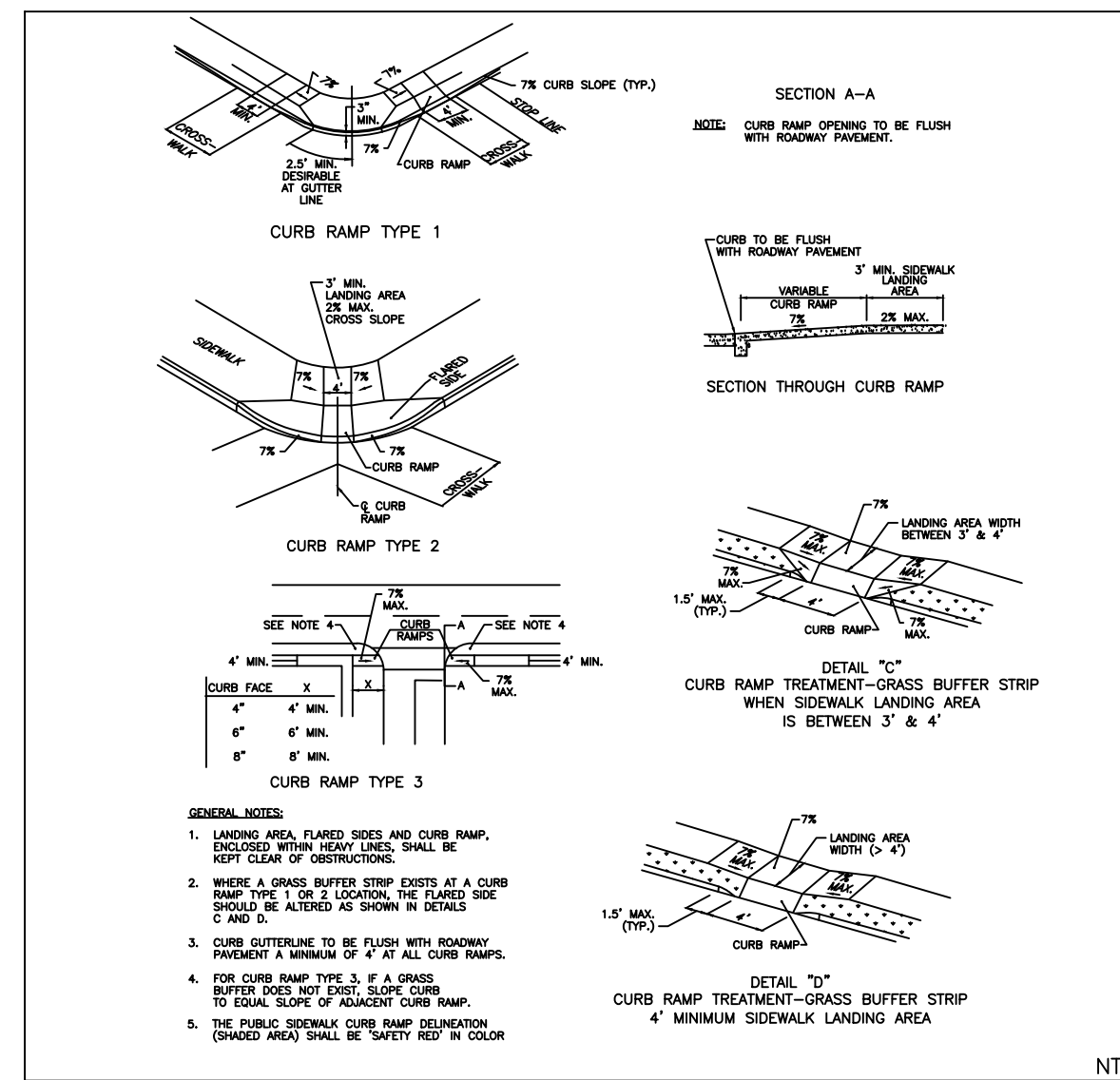
8 SIGN MOUNTING DETAILS



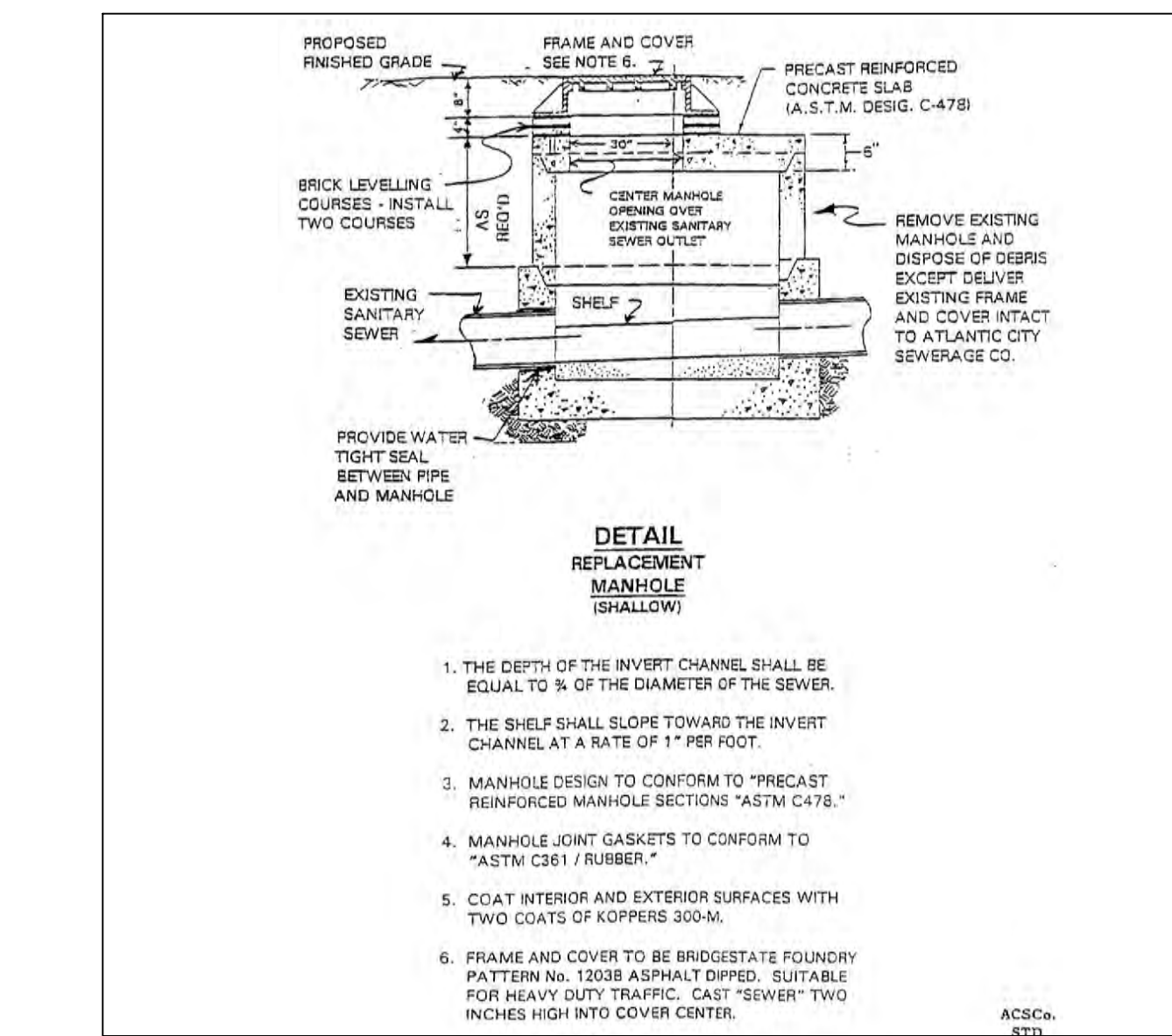
9 HANDICAPPED PARKING DETAIL



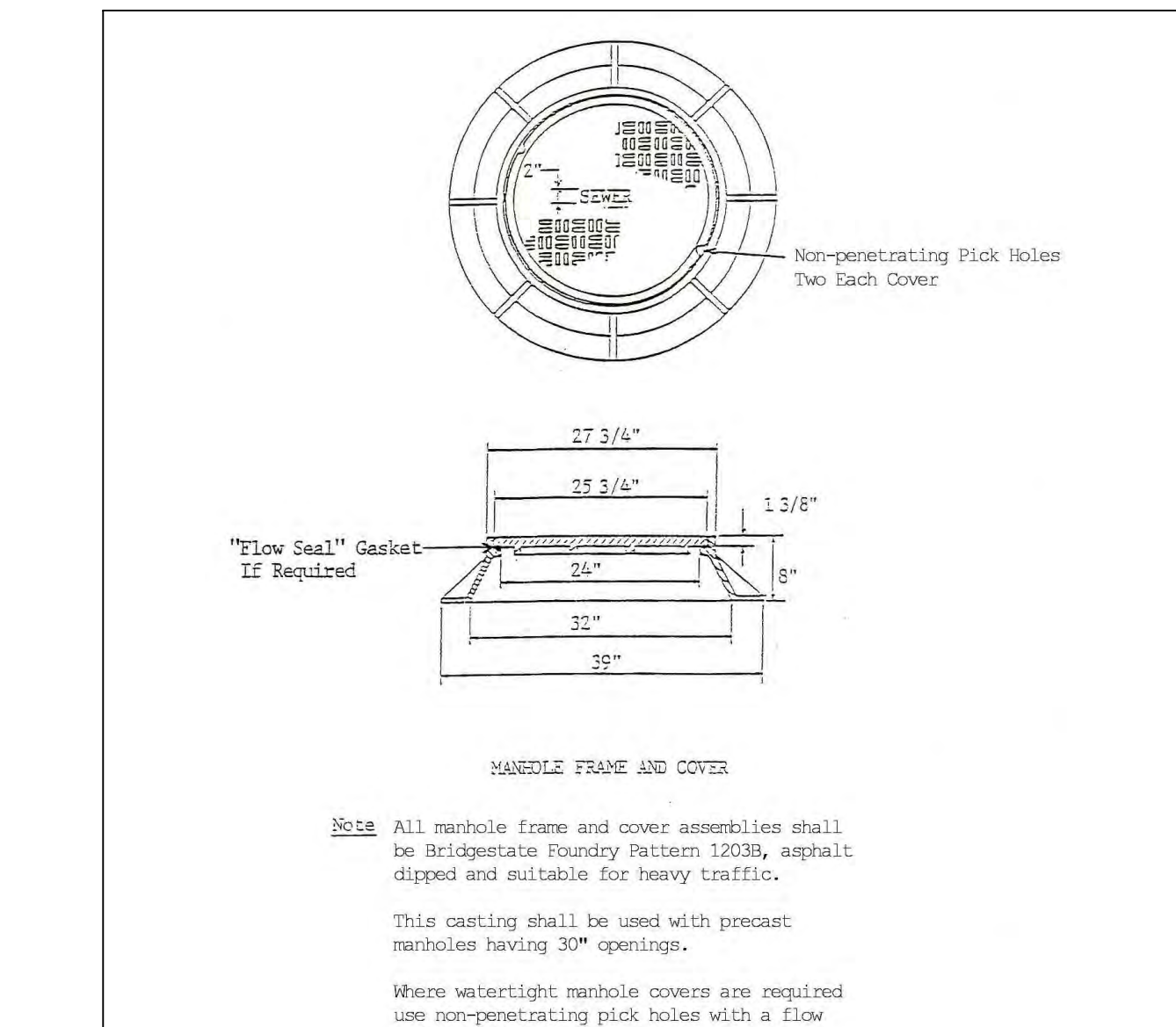
10 TRAFFIC SIGNS



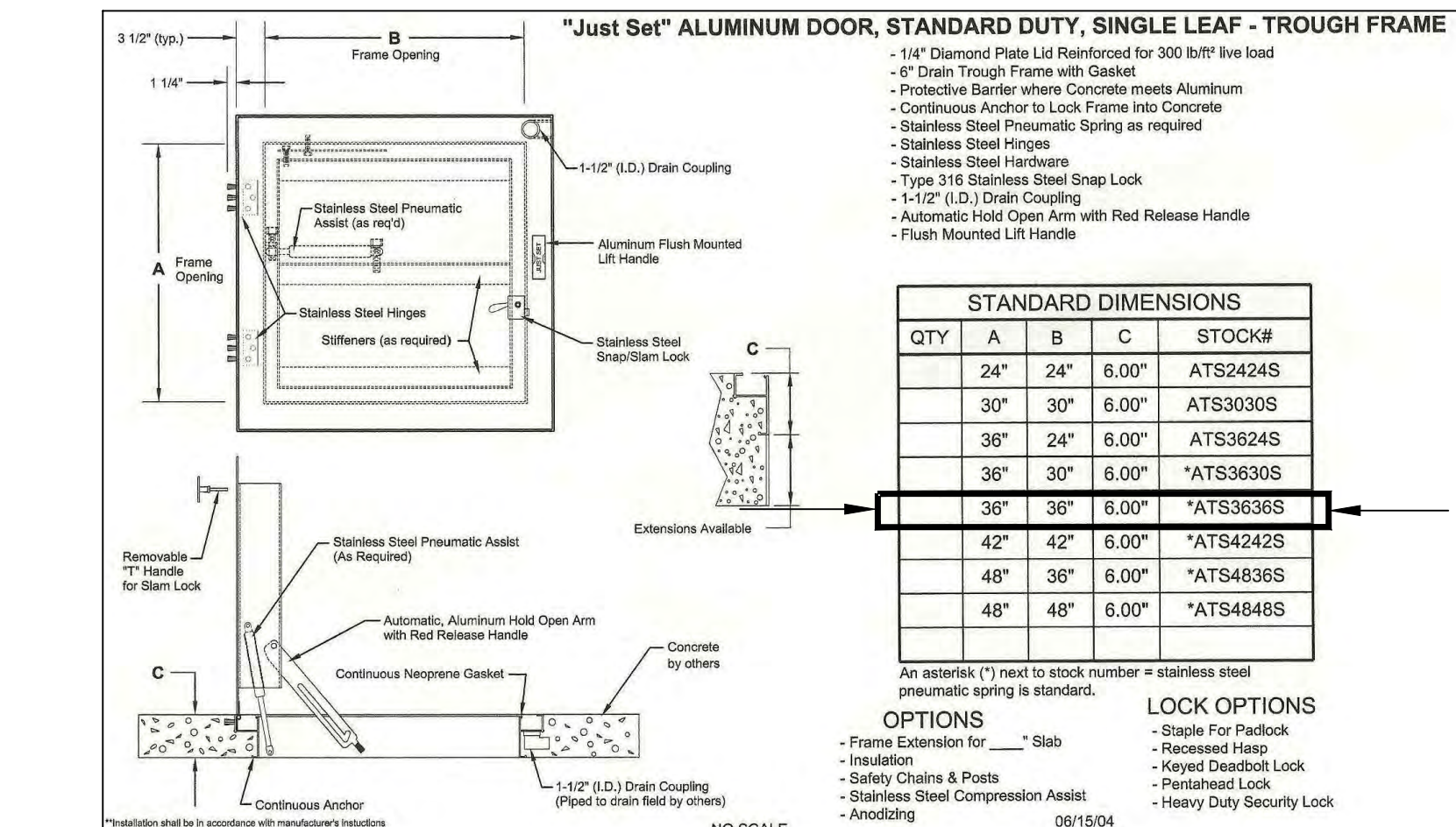
NTS



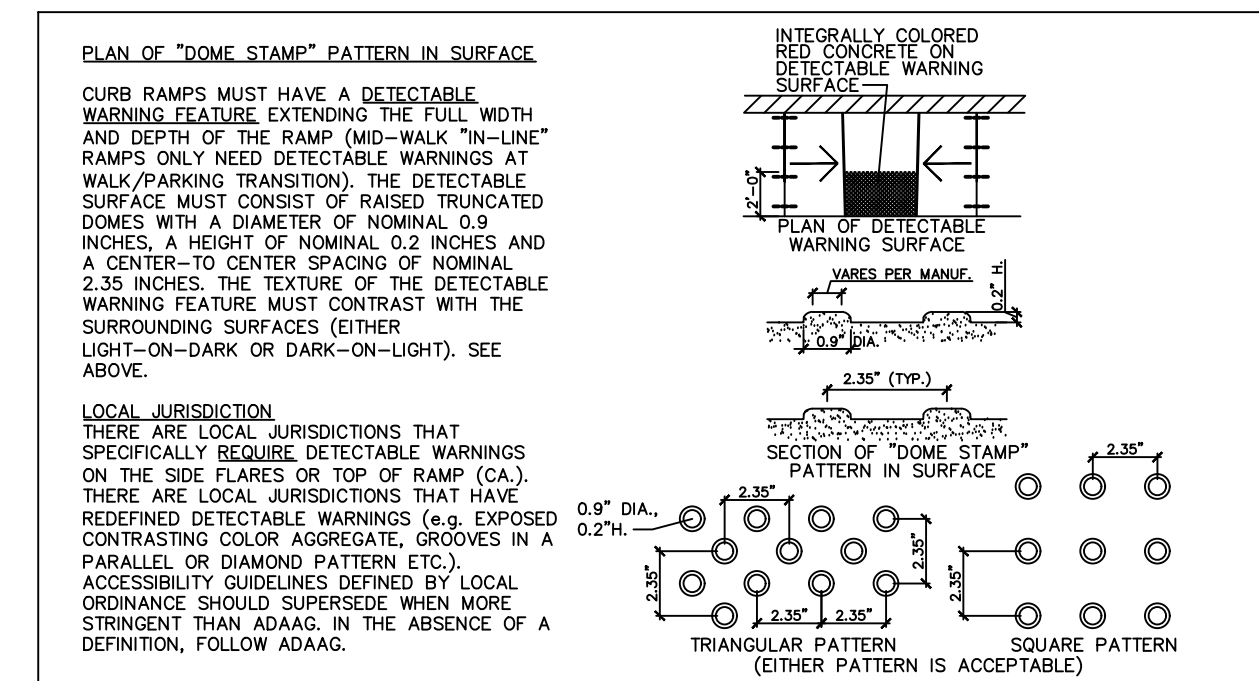
12 REPLACEMENT SANITARY MANHOLE DETAIL (IF REQUIRED BY ASCO DUE TO FIELD CONDITIONS)



13 SANITARY MANHOLE COVER DETAIL



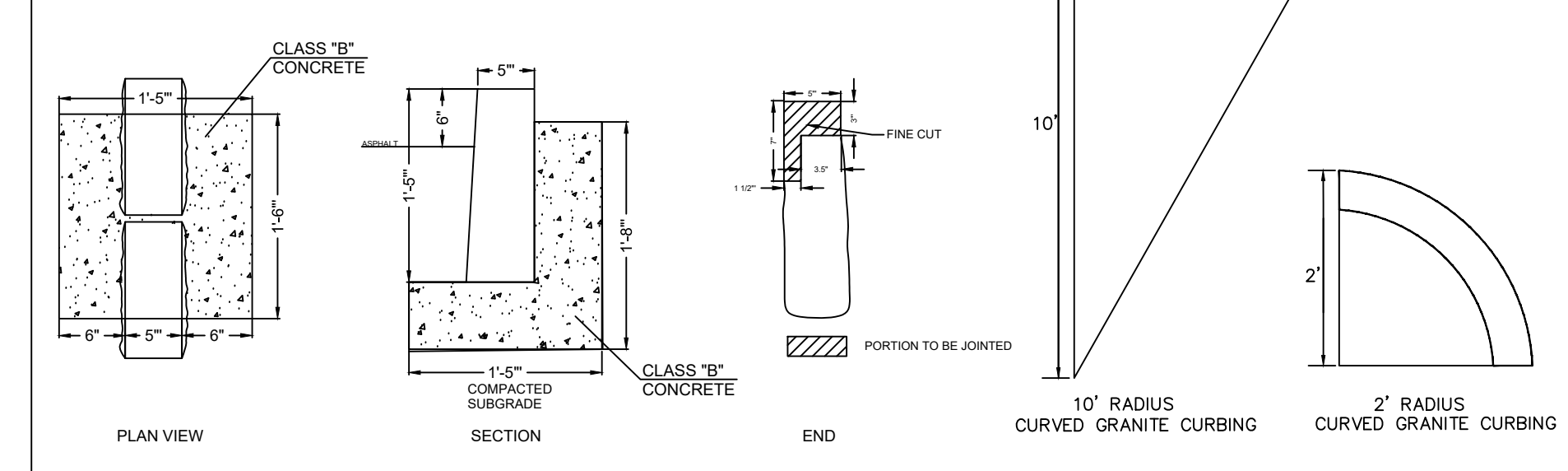
14 ACCESS DOOR DETAIL (DUAL FUNCTION METER PIT)



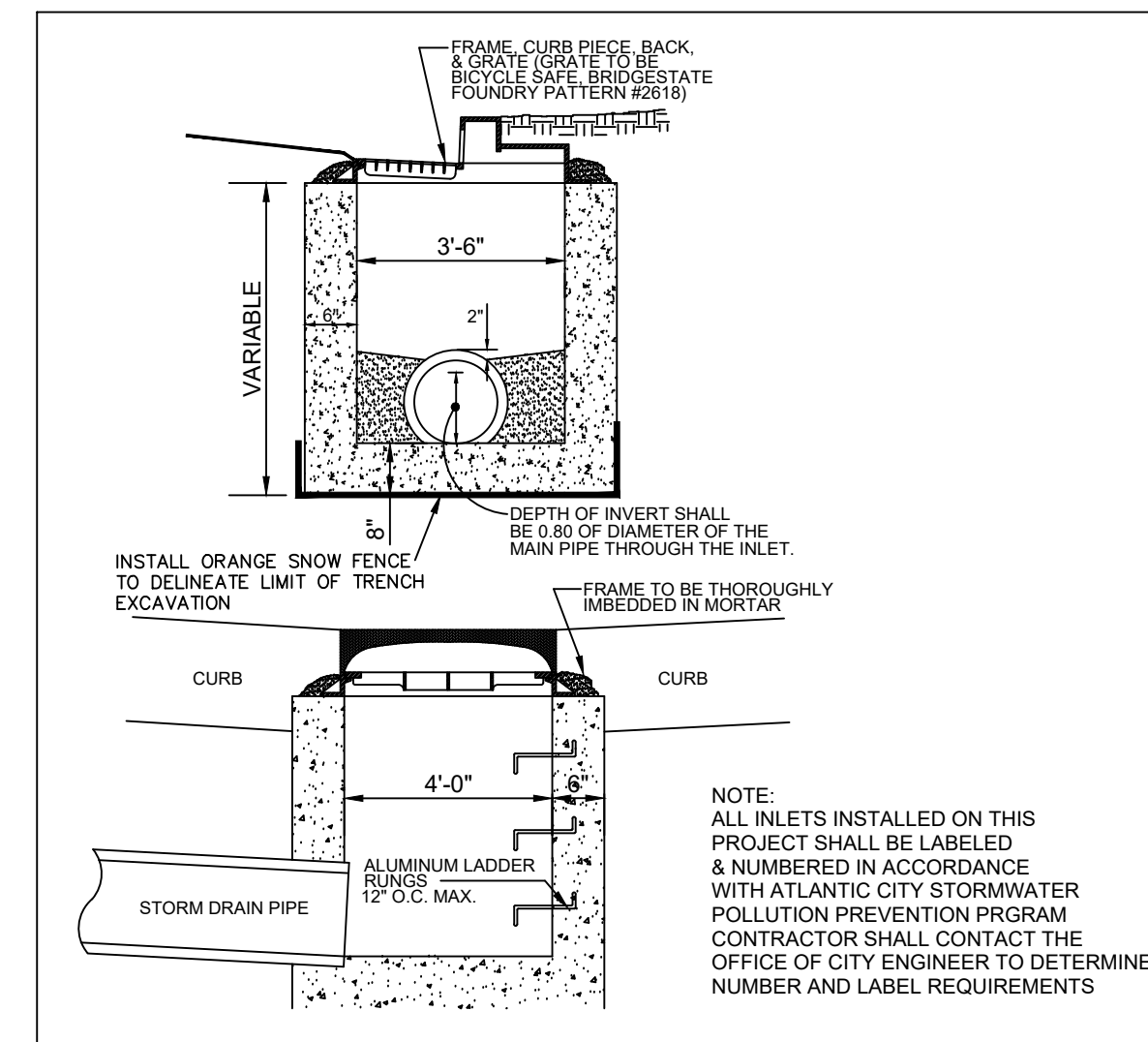
15 ACC. RAMP WARNING STRIP DETAILS

ALL CONCRETE UTILIZED FOR INSTALLATION OF GRANITE CURB SHALL BE CLASS B, MINIMUM DESIGN STRENGTH OF 4000 PSI AT 28 DAYS, AIR ENTRAINED

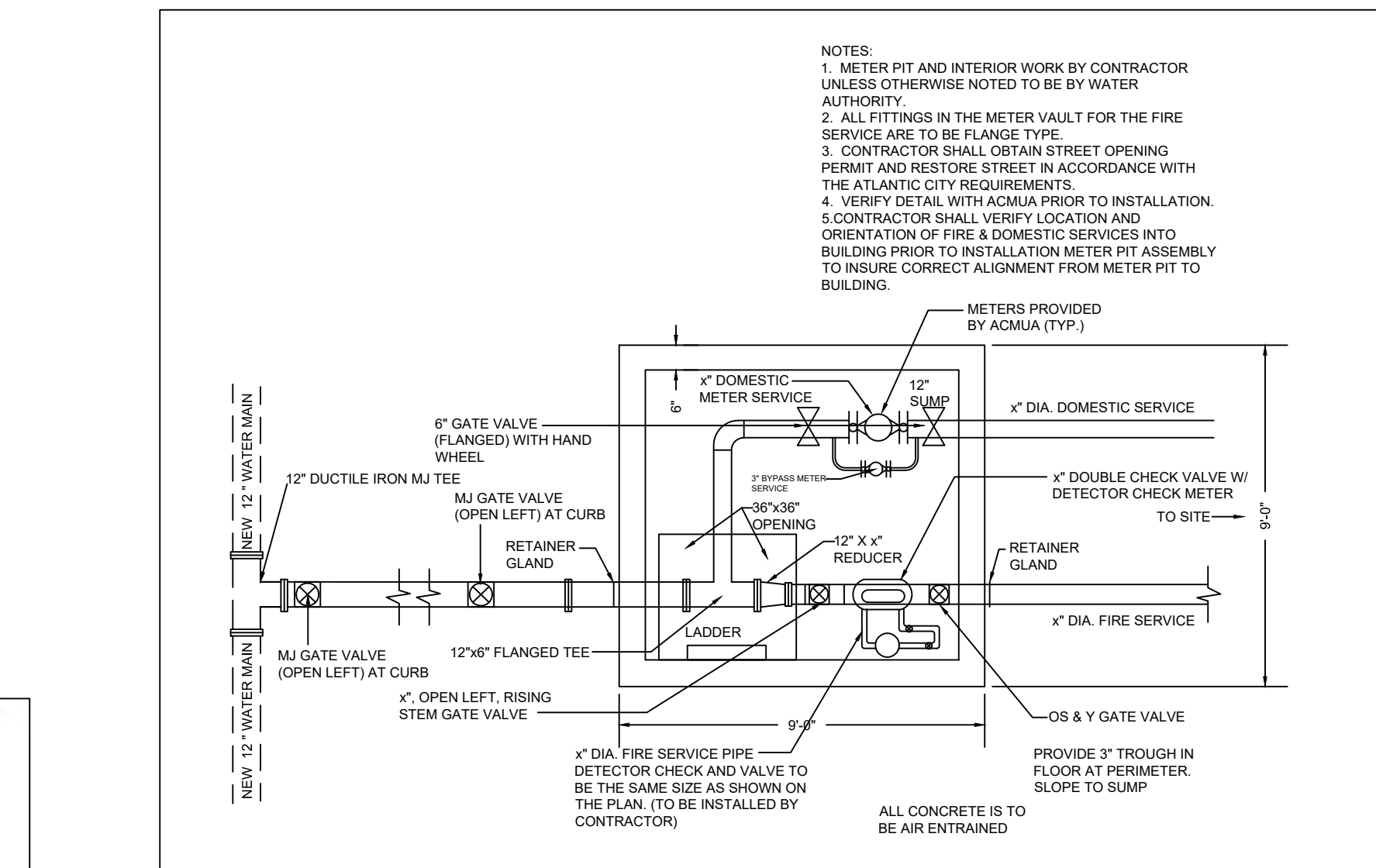
GRANITE SHALL BE GREY IN COLOR, SMOOTH FACE FINISH, AND SHALL MEET ALL REQUIREMENTS OF ATLANTIC CITY ENGINEERING DEPARTMENT. SAMPLE SHALL BE PROVIDED TO THE CITY ENGINEERS OFFICE FOR APPROVAL PRIOR TO INSTALLATION OF ANY GRANITE CURBING.



16 GRANITE CURBING (ATLANTIC CITY SPECIFICATIONS - CITY R.O.W.)



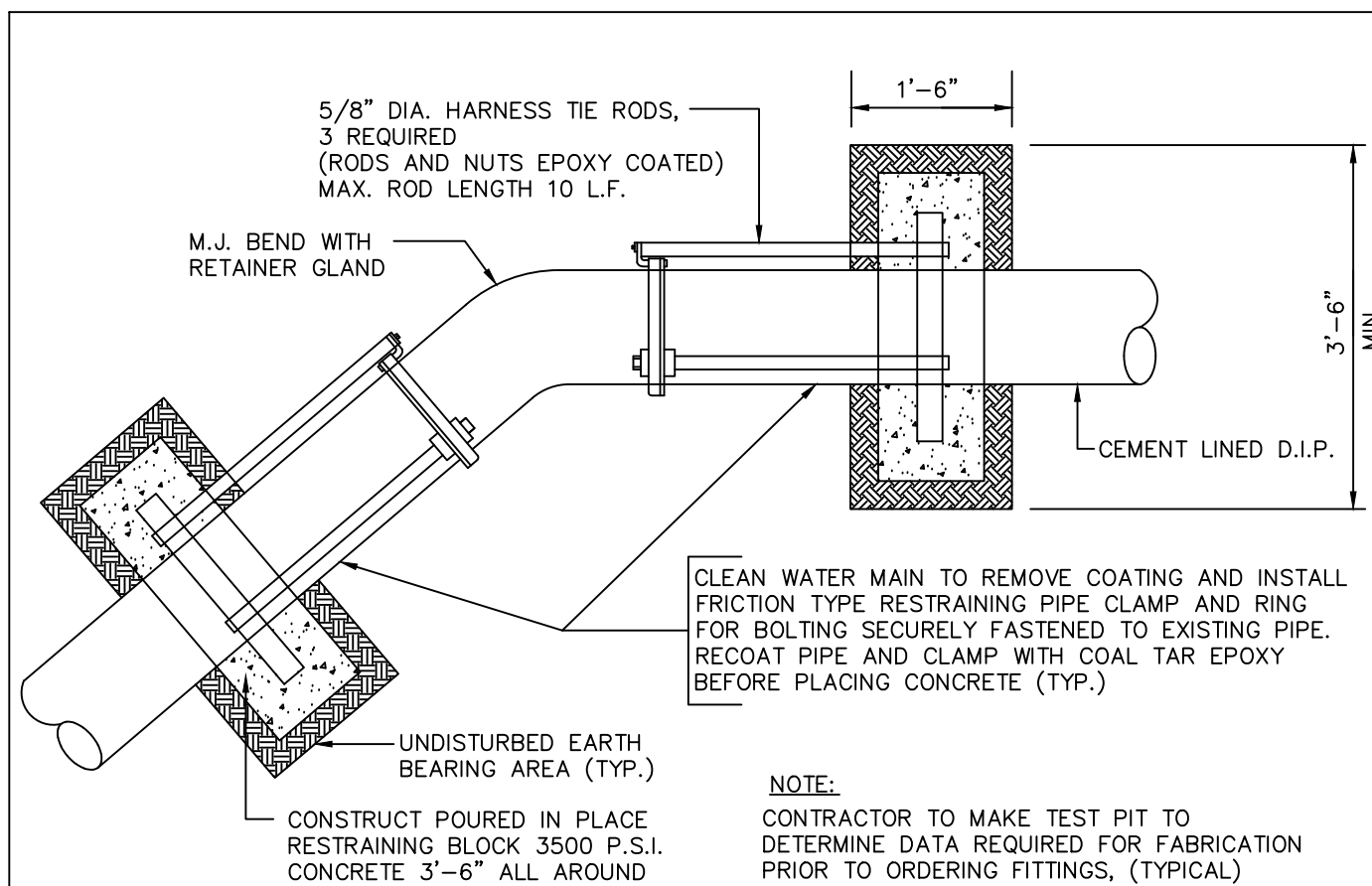
17 TYPE 'B' INLET



18 DUAL FUNCTION METER PIT



NO.	DATE	BY	DESCRIPTION	NO.	DATE	BY	DESCRIPTION



NUMBER AND SIZE OF RODS REQUIRED AND PIPE LENGTH IN FEET * TO BE RESTRAINED

PIPE SIZE IN INCHES	90° TEE OR DEAD END PLUG		45°		22 1/2°	
	No.	SIZE LENGTH	No.	SIZE LENGTH	No.	SIZE LENGTH
4	2	3/4" 30'	2	3/4" 10'	2	3/4" 5'
6	2	3/4" 40'	2	3/4" 10'	2	3/4" 5'
8	2 OR 4	3/4" 50' OR 7/8"	2	3/4" 15'	2	3/4" 5'
10	2 OR 4	3/4" 60' OR 1"	2	3/4" 20'	2	3/4" 5'
12	4	7/8" 70'	2	3/4" 20'	2	3/4" 5'
14	4	1" 80'	2	3/4" 25'	2	3/4" 5'
16	4	1" 80'	2	3/4" 25'	2	3/4" 5'

* LENGTH OF PIPE TO BE RESTRAINED IS FOR EACH SIDE OF BEND

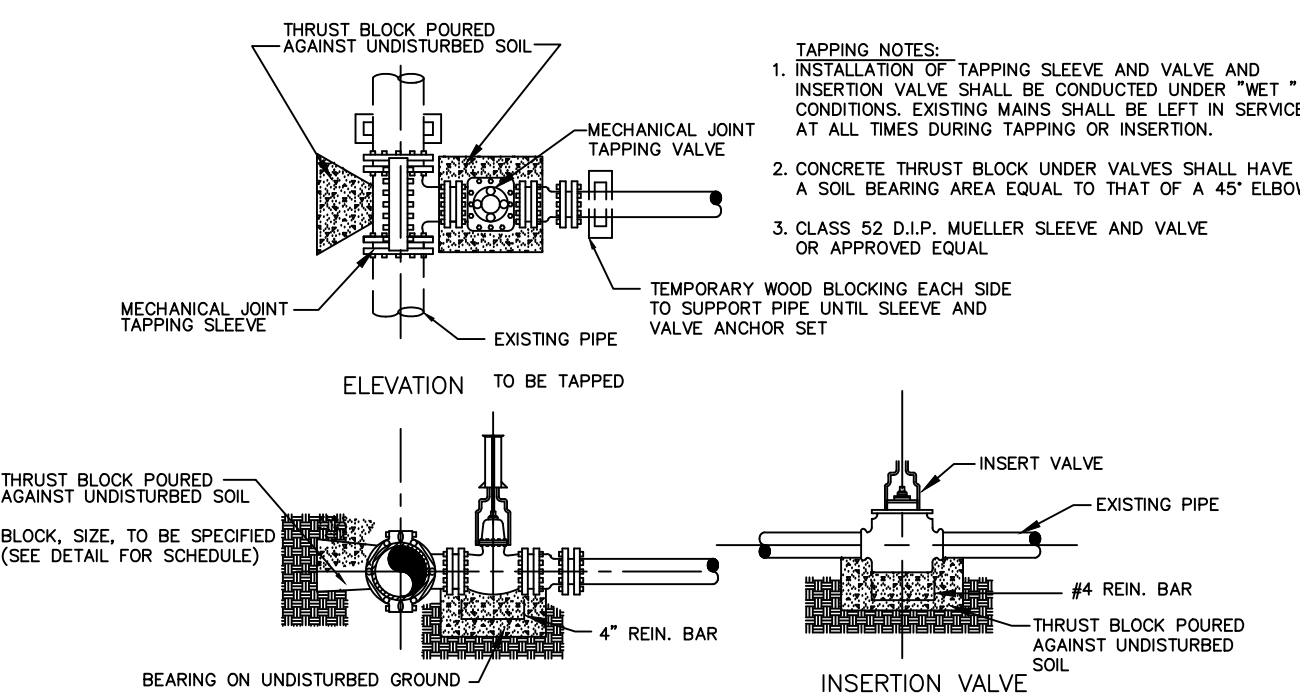
VERTICAL BEND RESTRAINTS

DIAMETER OF PIPE (d)	22 1/2° ELBOW	45° ELBOW	90° ELBOW	TEE	PLUG
"A"	"A"	"A"	"A"	"A"	"A"
6"	1.1	2.1	4.0	2.8	
8"	1.9	3.7	6.8	4.8	
10"	2.8	5.6	10.3	7.3	
12"	4.0	7.9	14.5	10.3	
16"	7.0	13.6	25.2	17.8	
20"	10.7	21.0	38.9	27.5	
24"	15.3	30.0	55.5	39.2	

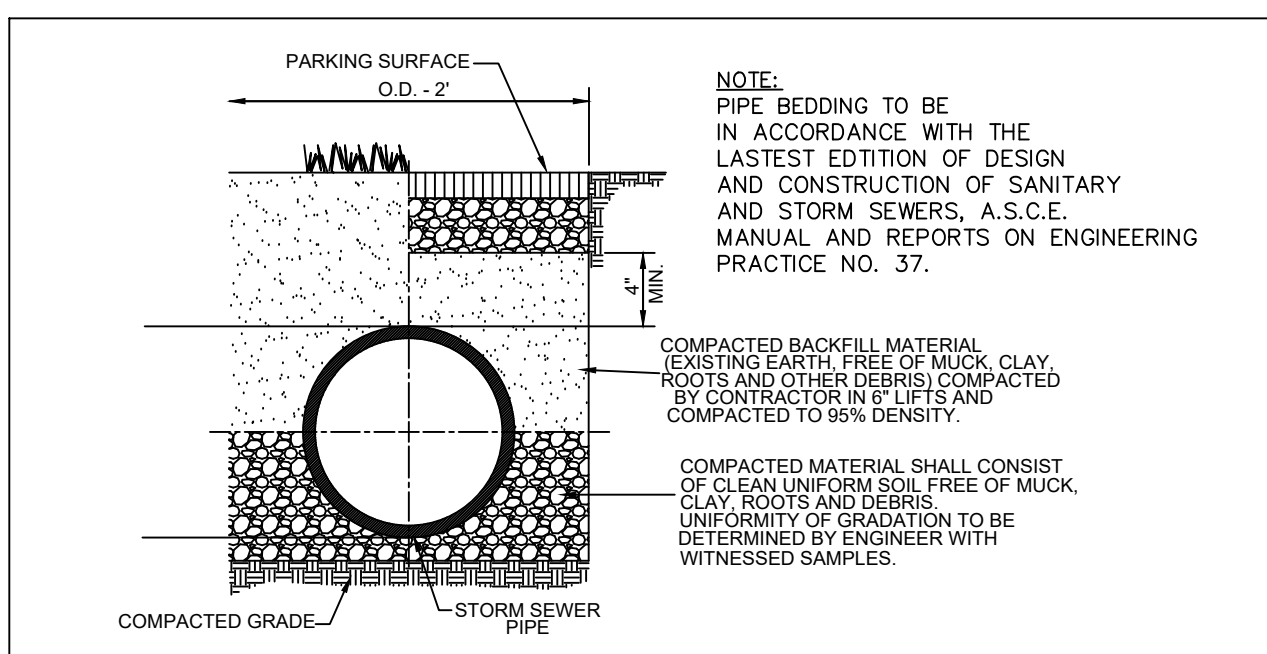
"A" - CONTACT BEARING AREA OF BLOCK WITH EARTH, IN SQUARE FEET

- NOTES:
- BEARING AREAS ARE BASED ON UNDISTURBED SOIL WITH A BEARING CAPACITY OF 2000 LBS. PER SQ. FT. FOR A LESSER SOIL BEARING CAPACITY, THESE AREAS SHALL BE INCREASED ACCORDINGLY.
 - ALL CONCRETE THRUST BLOCKS SHALL BE CLASS "C".
 - THRUST BLOCKS SHALL BE POURED AGAINST UNDISTURBED EARTH.
 - THE COST OF THRUST BLOCKS SHALL BE INCLUDED IN THE PRICE BID FOR WATER MAINS.
 - TEST PRESSURE = 150 P.S.I.

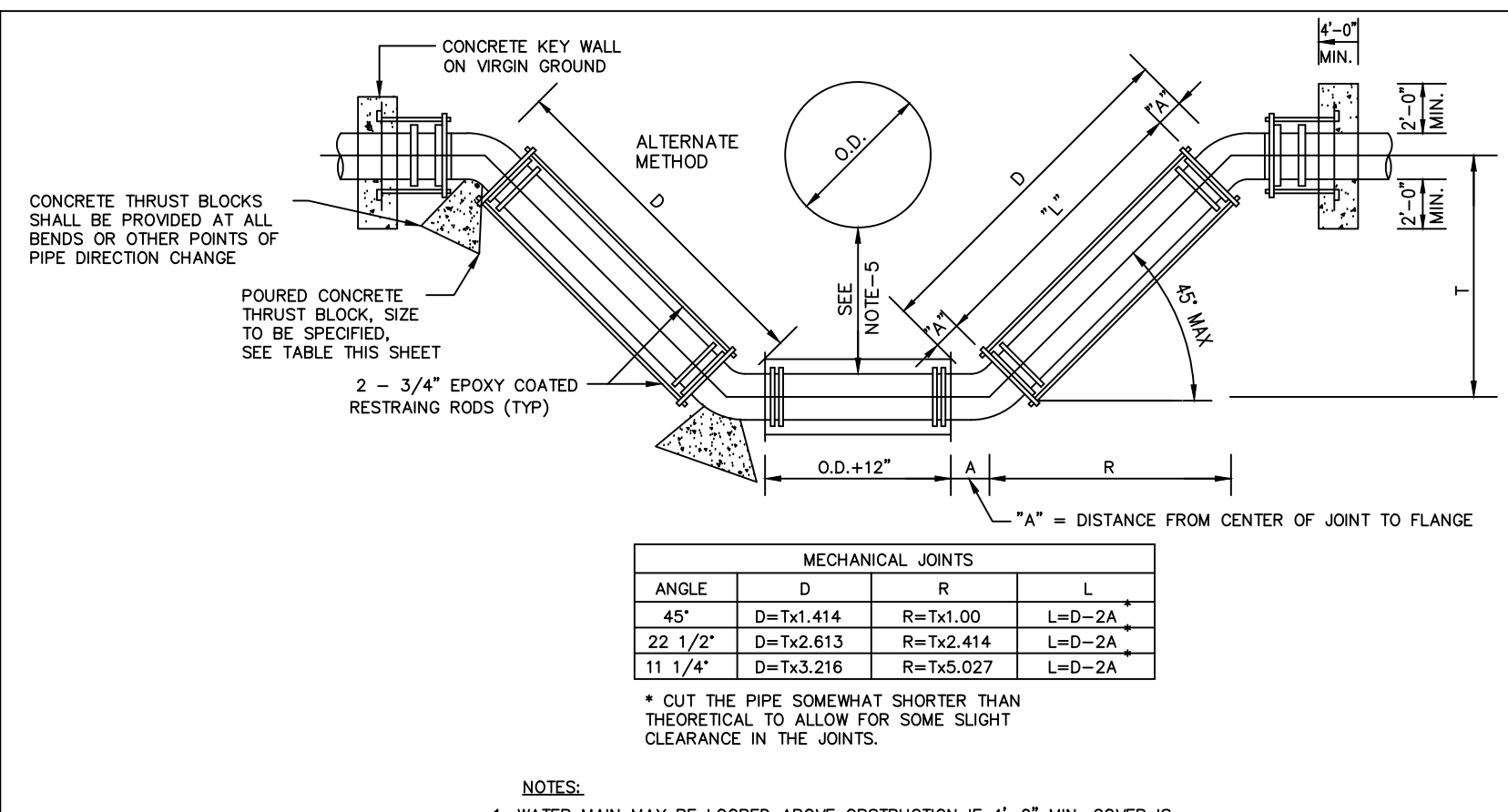
TABLE OF THRUST BLOCKS



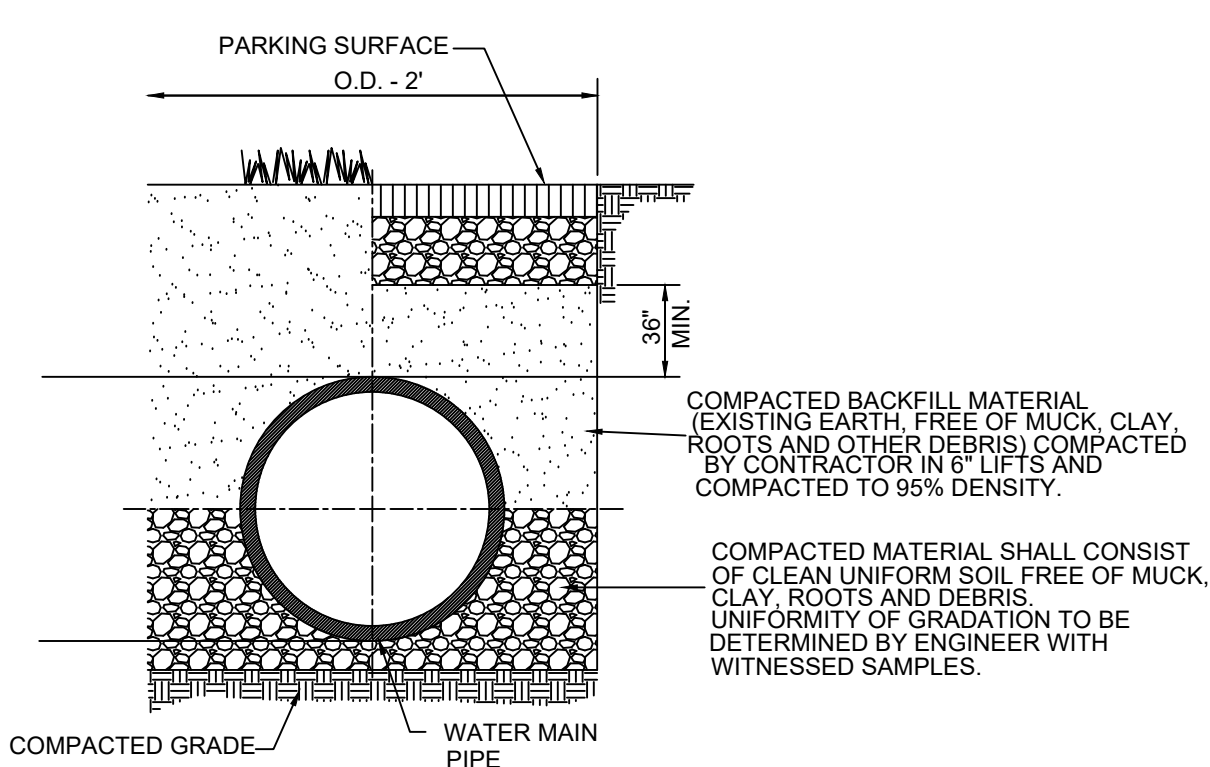
TAPPING VALVE AND SLEEVE ASSEMBLY



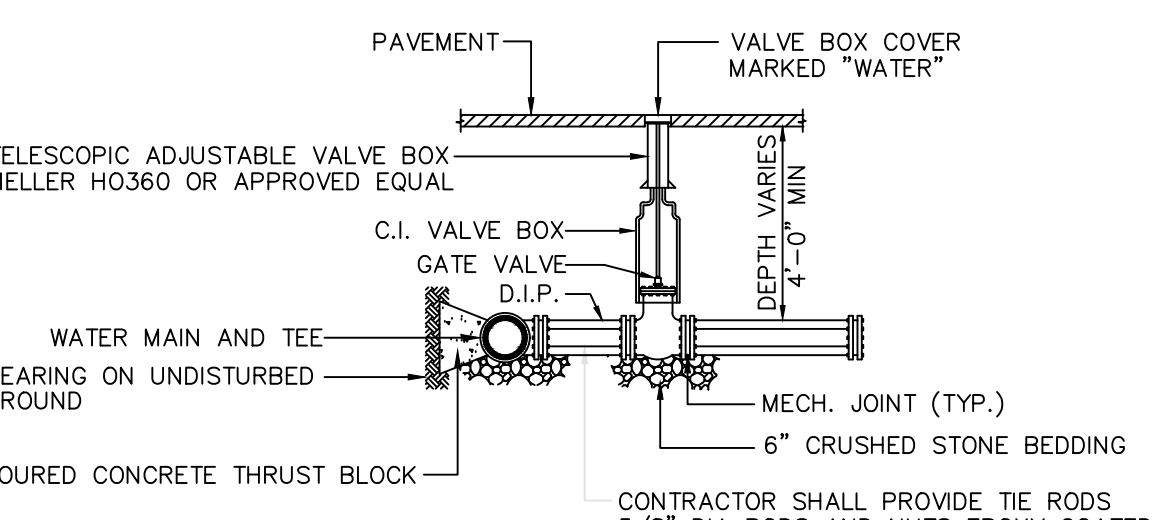
STORM SEWER BEDDING DETAIL



LOOPING WATER MAIN DETAIL

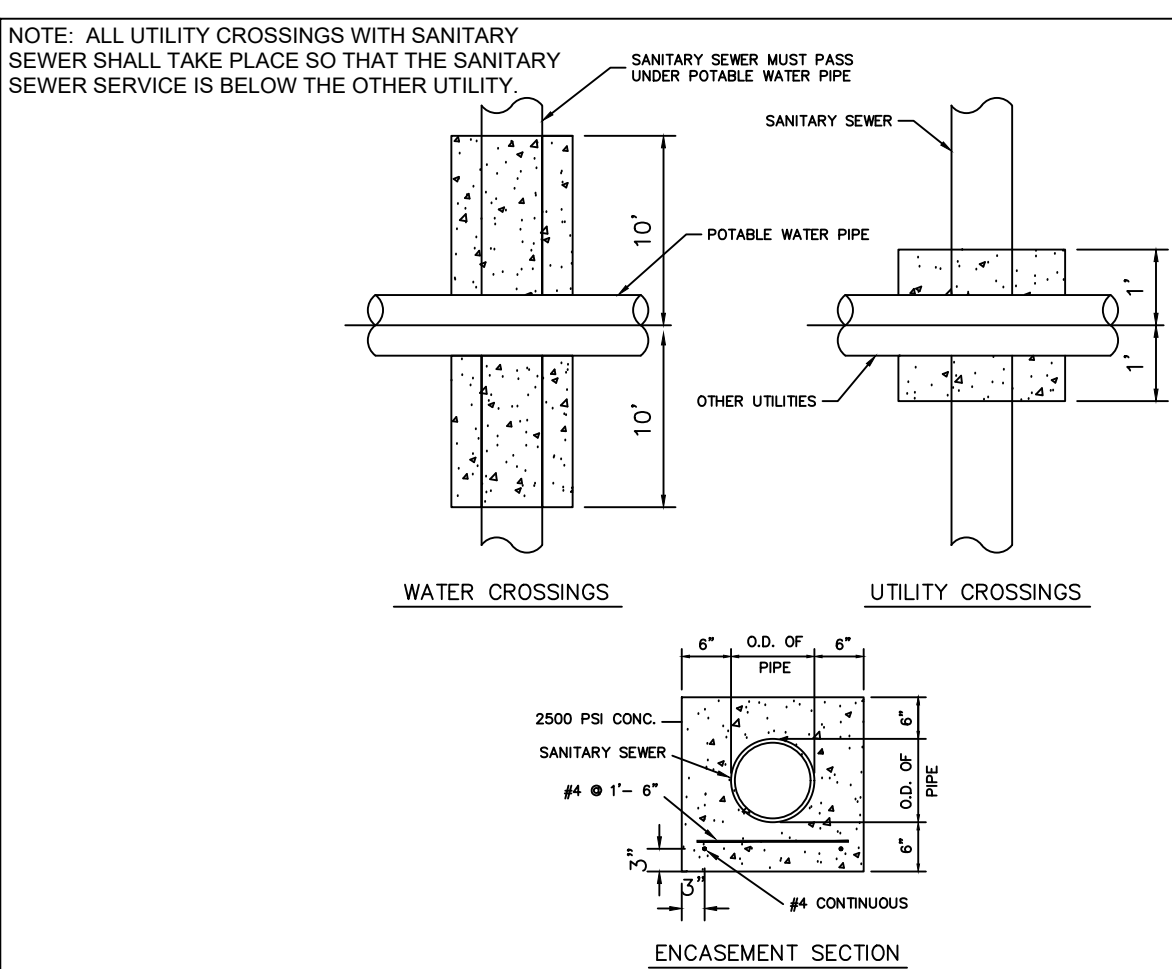


WATER MAIN BEDDING

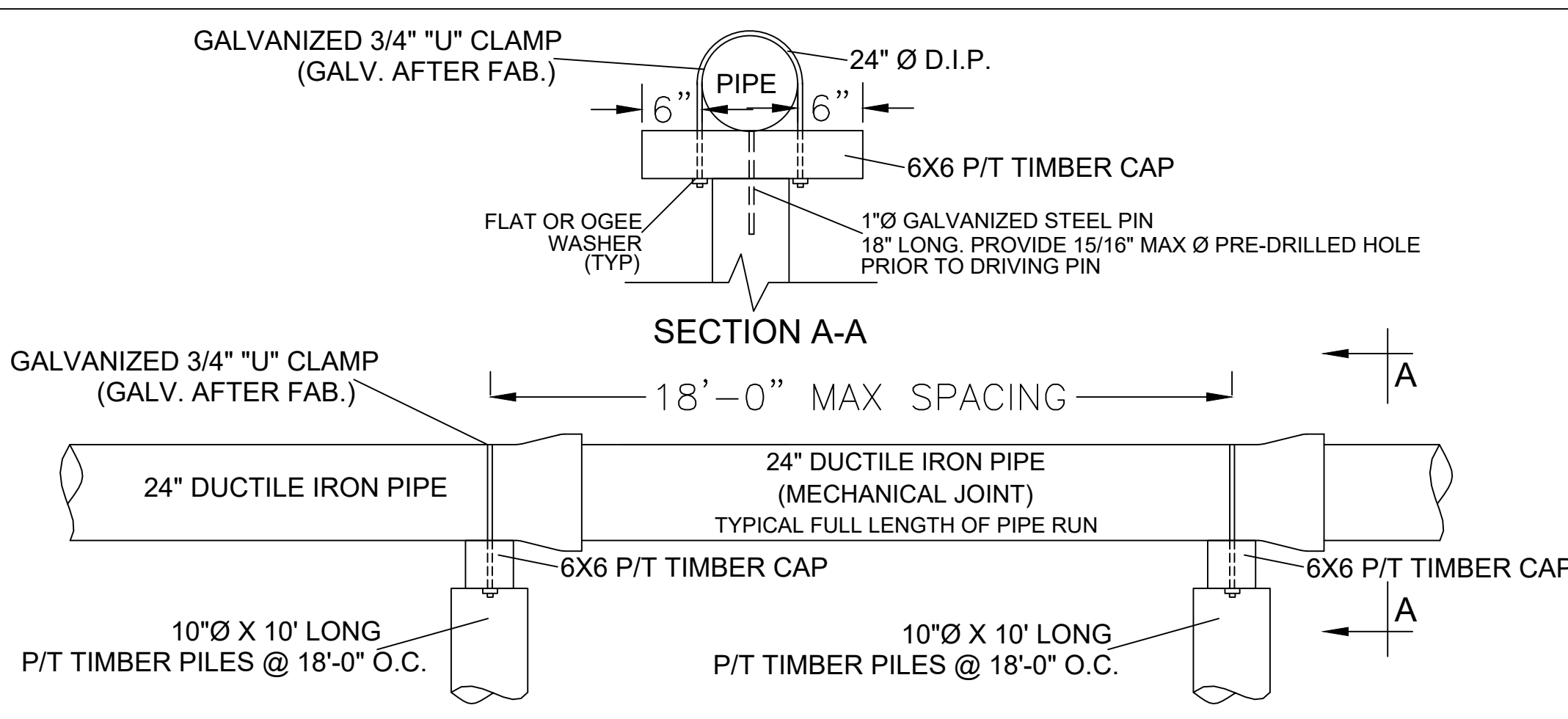


- NOTES:
- SIZE AND BEARING FOR THRUST BLOCK SHALL CONFORM TO CURRENT A.W.W.A. STANDARDS, OR SHALL BE DESIGNATED ON THE PLANS.
 - CONCRETE FOR THE THRUST BLOCKS TO BE N.J.D.O.T., CLASS "C".
 - ALL CONNECTIONS TO BE MECHANICAL JOINT, OR LOCK RING TYPE JOINTS, AS SPECIFIED.
 - GATE VALVES SHALL BE USED ON MAINS LESS THAN 16" IN DIAMETER.

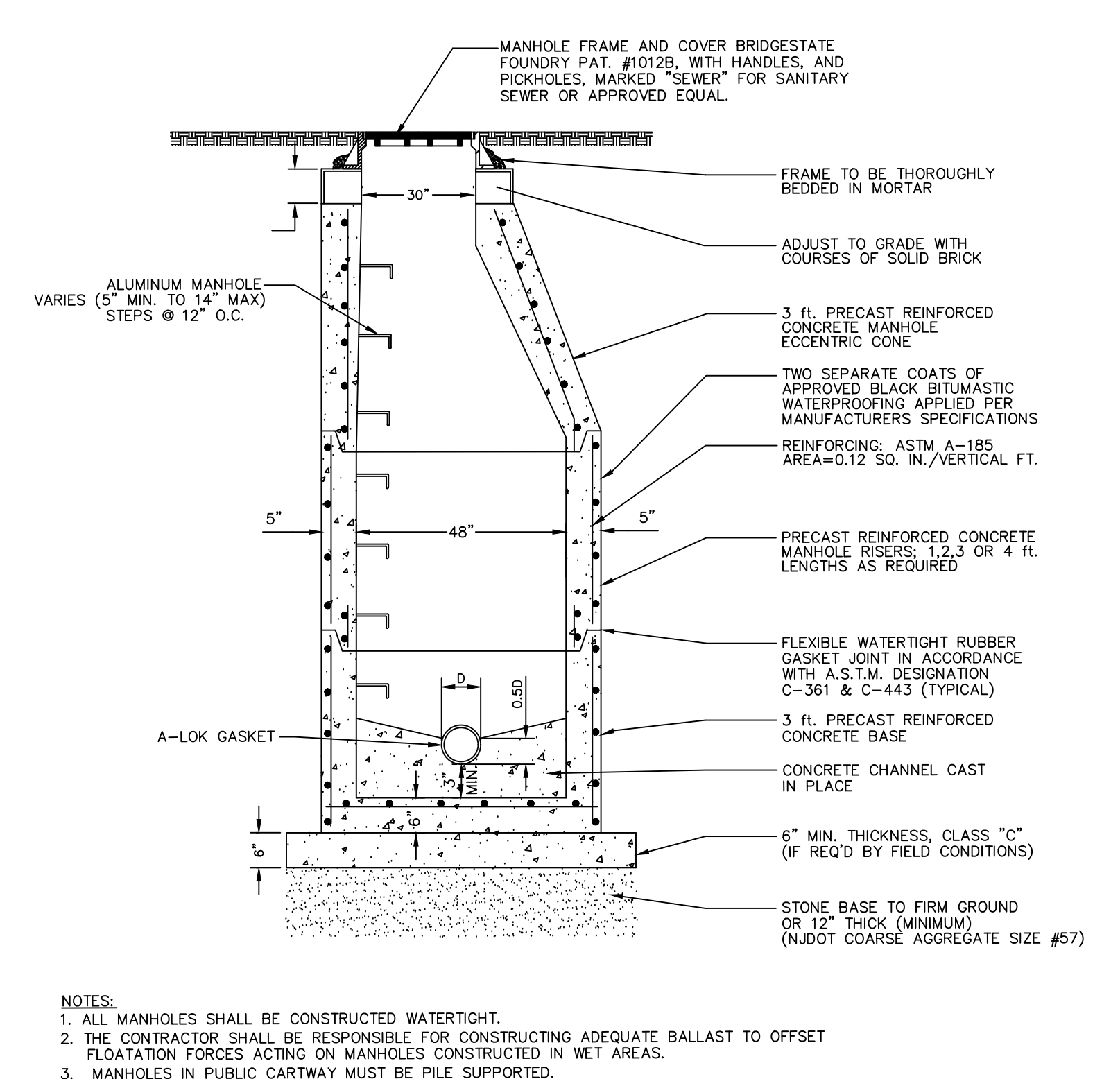
GATE VALVE ASSEMBLY



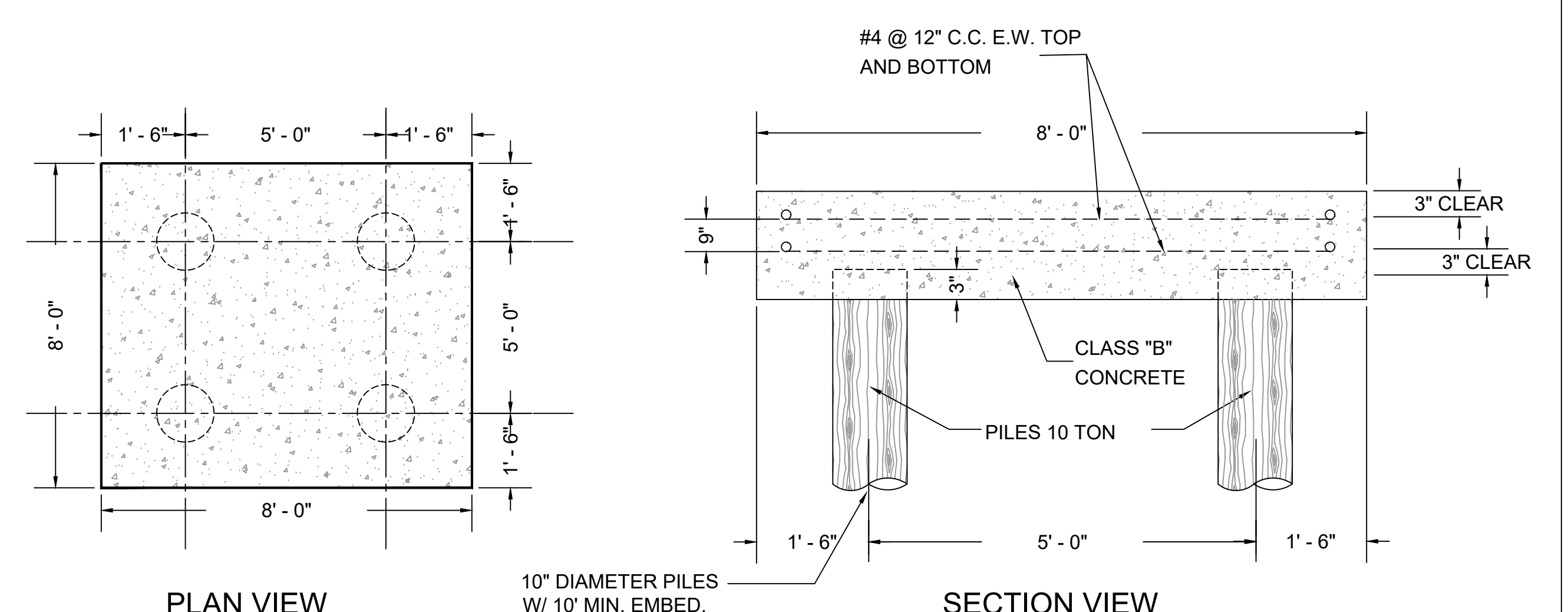
CONCRETE ENCASEMENT



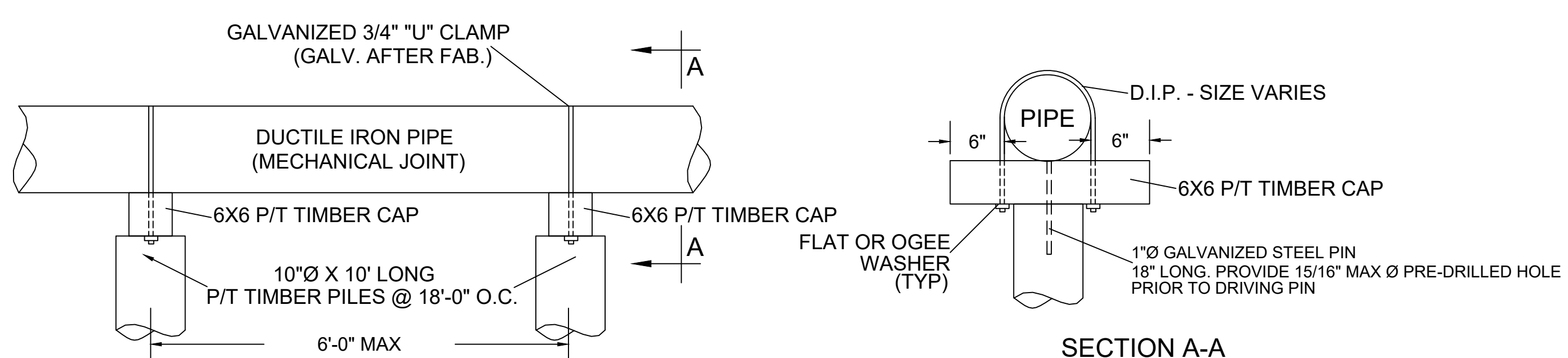
PILE SUPPORTED PIPE DETAIL



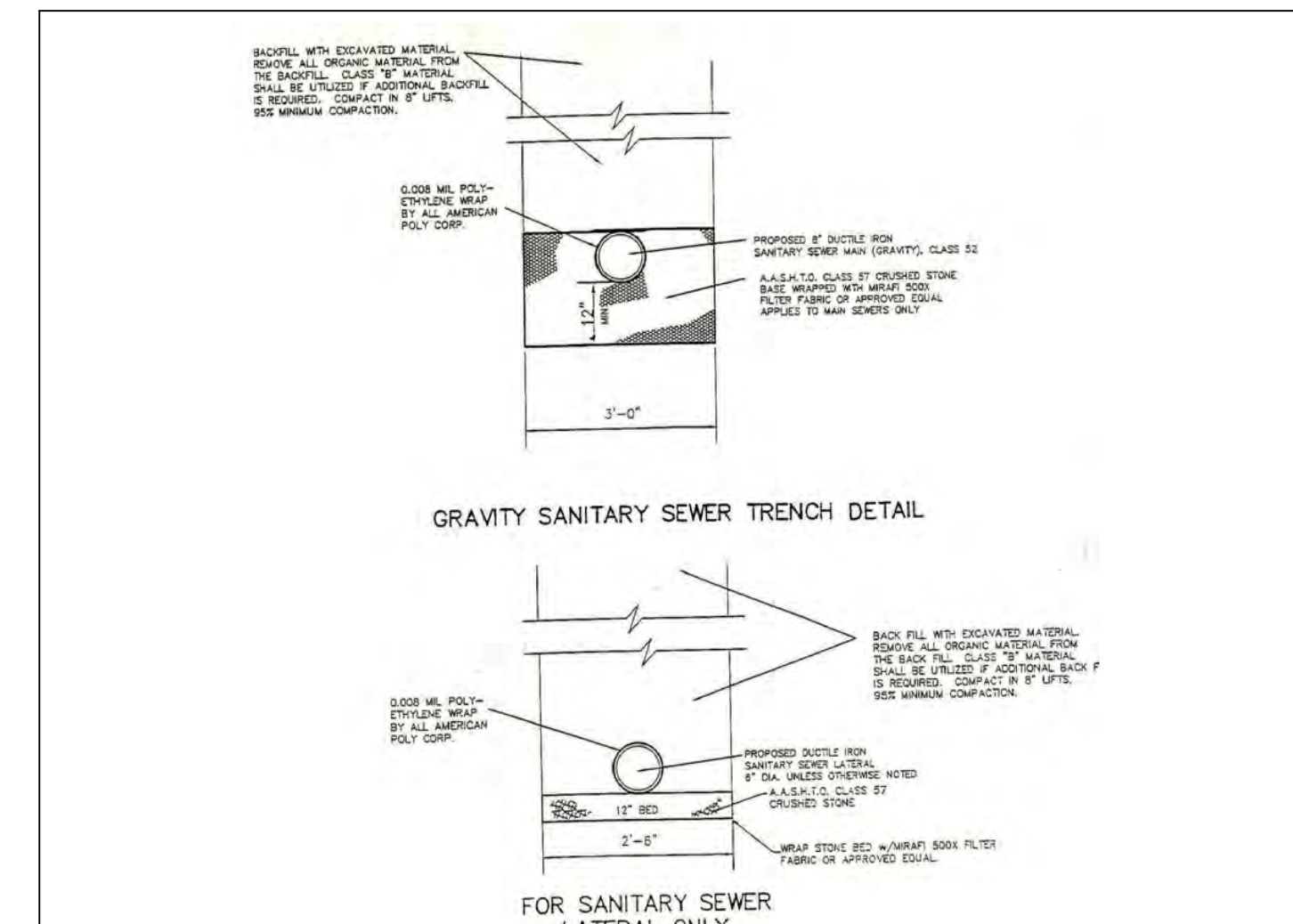
STANDARD STORM MANHOLE DETAIL



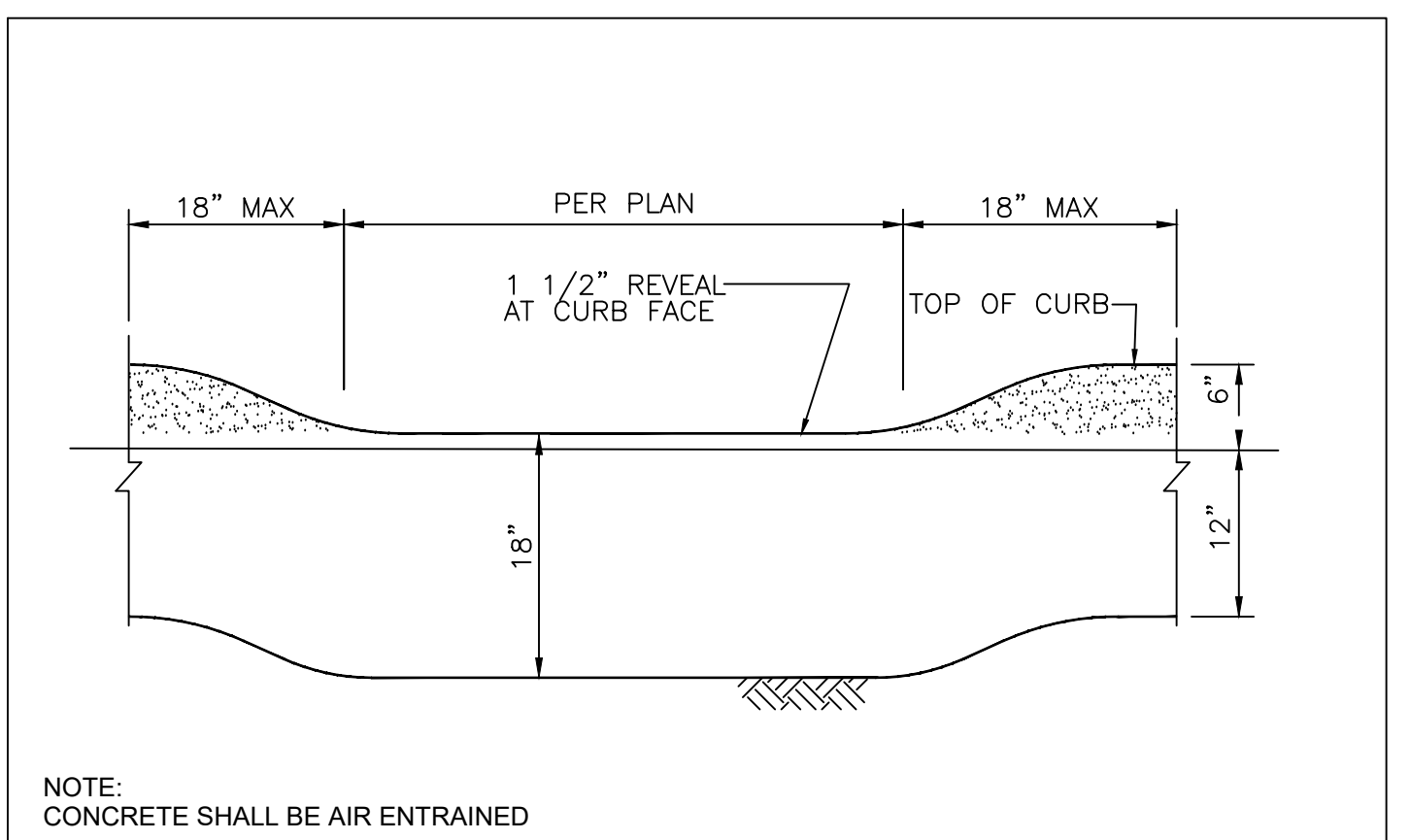
PILING CAP DETAIL (FOR MANHOLE AND INLET STRUCTURES WITHIN PUBLIC CARTWAY)



PILE SUPPORTED PIPE DETAIL (FOR STORM SEWER WITHIN PUBLIC CARTWAY)



SANITARY SEWER TRENCH DETAILS



DEPRESSED CURB AT DRIVEWAY



NO.	DATE	BY	DESCRIPTION	NO.	DATE	BY	DESCRIPTION