

LOCATION OF NEW
PEDESTRIAN BRIDGE ABOVE
FIN FLR @ +60'-0" MSL

SITE PLAN

SCALE: 1/8" = 1'-0"

1

0' 8' 16' 32' 64'

SCALE: 1/8" = 1'-0"

1/8" DRAWING NO.

17000.24

A-001

SUBMISSIONS		
NO.	DATE	DESCRIPTION
1		
2		
3		
4		
5		
6		
7		
8		
9		
10		
11		
12		
13		
14		
15		
16		
17		
18		
19		
20		
21		
22		
23		
24		
25		
26		
27		
28		
29		
30		
31		
32		
33		
34		
35		
36		
37		
38		
39		
40		
41		
42		
43		
44		
45		
46		
47		
48		
49		
50		
51		
52		
53		
54		
55		
56		
57		
58		
59		
60		
61		
62		
63		
64		
65		
66		
67		
68		
69		
70		
71		
72		
73		
74		
75		
76		
77		
78		
79		
80		
81		
82		
83		
84		
85		
86		
87		
88		
89		
90		
91		
92		
93		
94		
95		
96		
97		
98		
99		
100		

TROPICANA

ATLANTIC CITY

TROPICANA

CONNECTOR BRIDGE

BRIGHTON AVE &

THE BOARDWALK

ATLANTIC CITY, NJ 08401

THOMAS J. SWAN, AIA, P.P.

Founding Principal

WILLIAM A. SOBENCO, AIA, P.P.

Founding Principal

NOVA HAZOVEN, AIA, P.P.

Mark Ruffalo, AIA

Principal

Christopher M. Mancini, NCARB

Principal

Kimberly McCarron, NCARB

Principal

www.soshrich.com

THOMAS J. SWAN, AIA, P.P.

Founding Principal

WILLIAM A. SOBENCO, AIA, P.P.

Founding Principal

NOVA HAZOVEN, AIA, P.P.

Mark Ruffalo, AIA

Principal

Christopher M. Mancini, NCARB

Principal

Kimberly McCarron, NCARB

Principal

www.soshrich.com

atlantic city

new york

1020 Atlantic Avenue

Atlantic City, NJ 08401

T: 609.345.5222

F: 609.345.7486

www.soshrich.com

atlantic city

new york

145 West 57th Street

Atlantic City, NJ 08401

T: 609.345.5222

F: 609.345.7486

www.soshrich.com

SOSHI

atlantic city

new york

1020 Atlantic Avenue

Atlantic City, NJ 08401

T: 609.345.5222

F: 609.345.7486

www.soshrich.com

SOSHI

atlantic city

new york

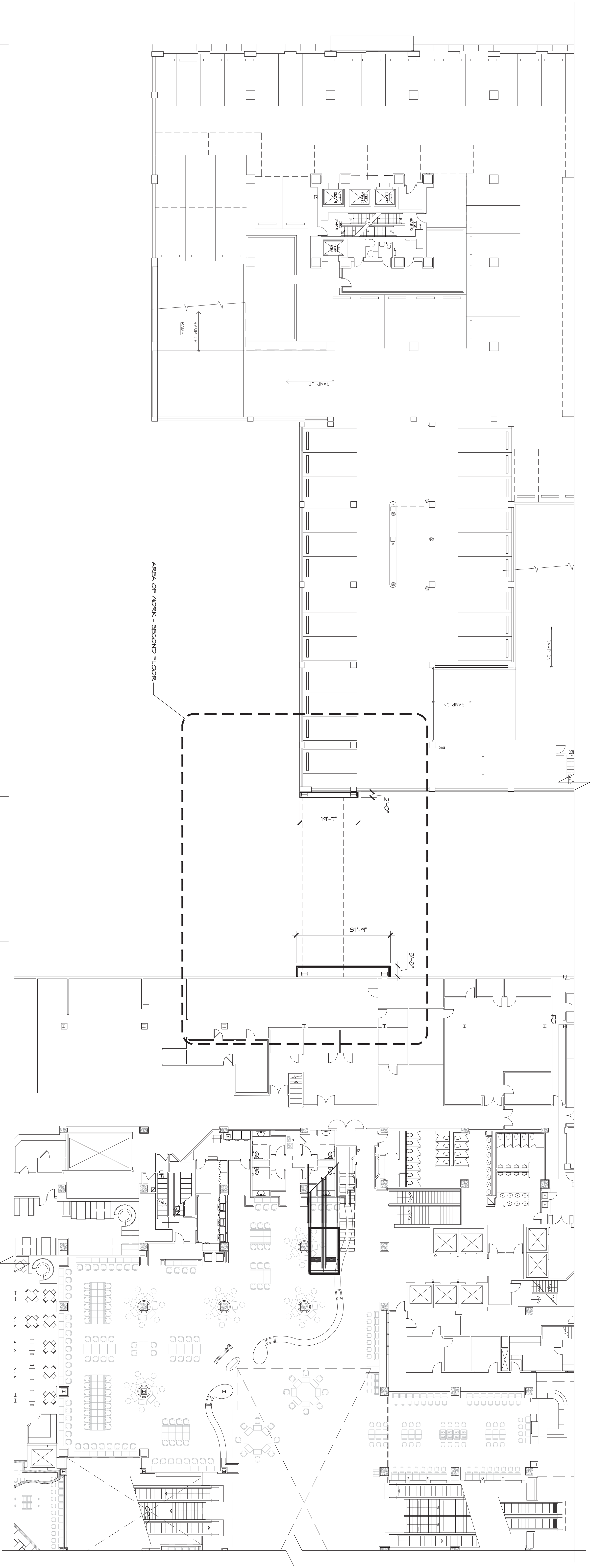
145 West 57th Street

Atlantic City, NJ 08401

T: 609.345.5222

F: 609.345.7486

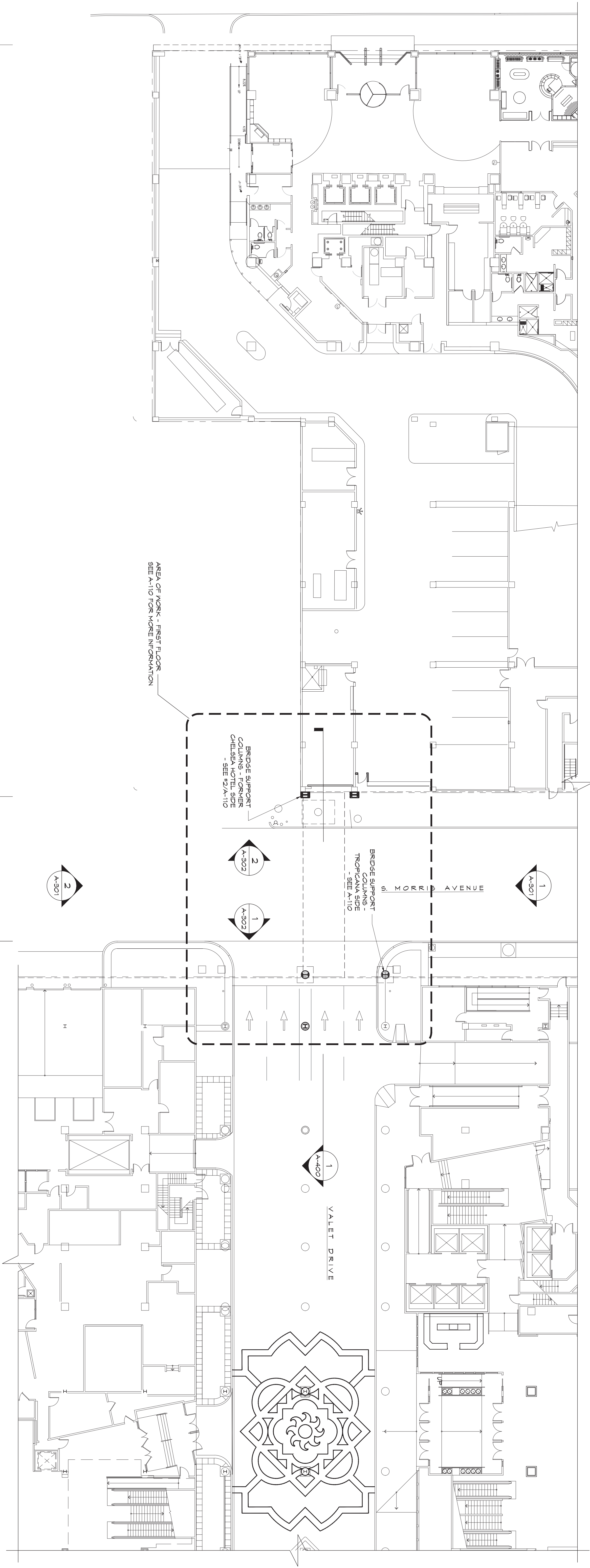
www.soshrich.com



SECOND FLOOR PLAN

SCALE
1/16"=1'-0"

2



FIRST FLOOR PLAN

SCALE
1/16"=1'-0"

1

SUBMISSIONS		
1		
2		
3		
4		
5		
6		
7		
8		
9		
10		
11		
12		
13		
14		
15		
16		
17		
18		
19		
20		
21		
22		
23		
24		
25		
26		
27		
28		
29		
30		
31		
32		
33		
34		
35		
36		
37		
38		
39		
40		
41		
42		
43		
44		
45		
46		
47		
48		
49		
50		
51		
52		
53		
54		
55		
56		
57		
58		
59		
60		
61		
62		
63		
64		
65		
66		
67		
68		
69		
70		
71		
72		
73		
74		
75		
76		
77		
78		
79		
80		
81		
82		
83		
84		
85		
86		
87		
88		
89		
90		
91		
92		
93		
94		
95		
96		
97		
98		
99		
100		

DRAWING TITLE
FIRST & SECOND
FLOOR PLANS

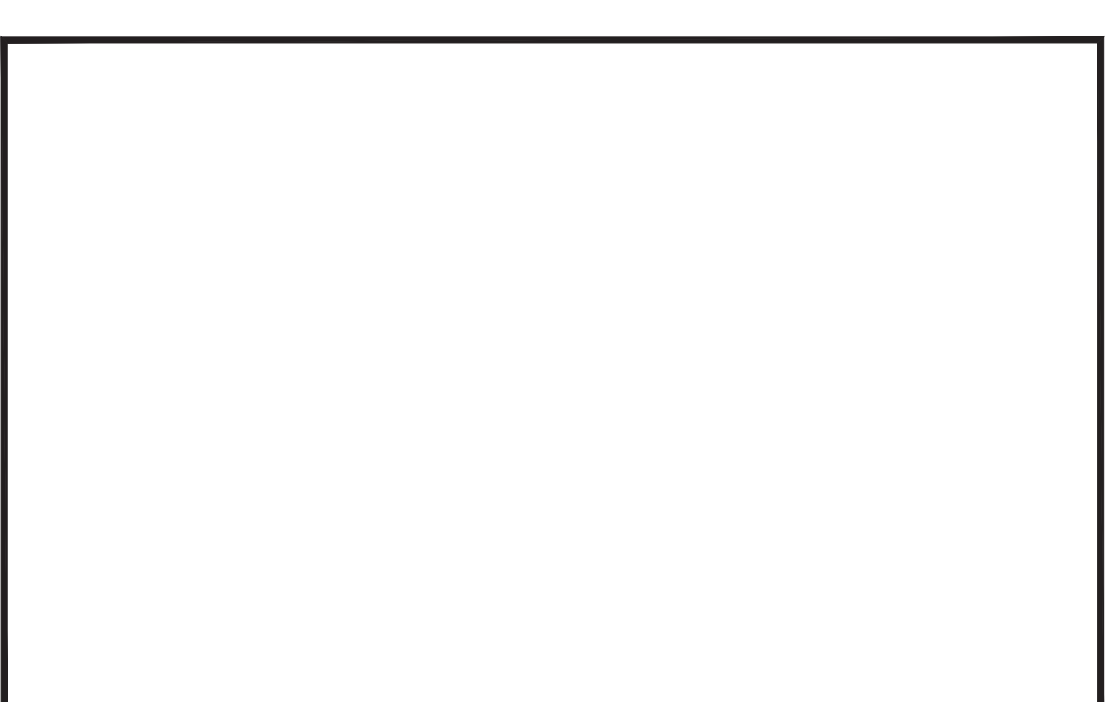
DESIGNER	NS	DRAWING NO.	A-101
PROJECT NO.	17000.24		

SOSH
atlantic city
1020 Atlantic Avenue
Atlantic City, NJ 08401
T: 609.345.5222
F: 609.345.7486
www.sosharch.com

Thomas J. Swets, AIA, P.P.
Founding Principal
William A. Soemo, AIA, P.P.
Founding Principal
Nony Hozover, AIA, P.P.
Mark Petrella, AIA
Principal
Christopher M. Menthin, NCARB
Principal
Kimberly McCarron, NCARB
Architect

William A. Soemo - New Jersey License # 21A0000000

TROPICANA
ATLANTIC CITY
TROPICANA
CONNECTOR BRIDGE
BRIGHTON AVE &
THE BOARDWALK
ATLANTIC CITY, NJ 08401



SOSH

Atlantic City
1020 Atlantic Avenue
Atlantic City, NJ 08401
T: 609.345.5222
F: 609.345.7486
www.soshatch.com

new york
145 West 57th Street
New York, NY 10011
T: 212.246.5777
F: 212.246.5777

Thomas J. Sikes, A.I.A., P.P.
Founding Principal
William A. Sienko, A.I.A., P.P.
Founding Principal
Noy Hozenen, A.I.A., P.P.
Founding Principal
Mark Peltola, A.I.A.
Christopher M. Menchini, NCARB
Principal
Kimberly McCarron, NCARB
Principal

Value

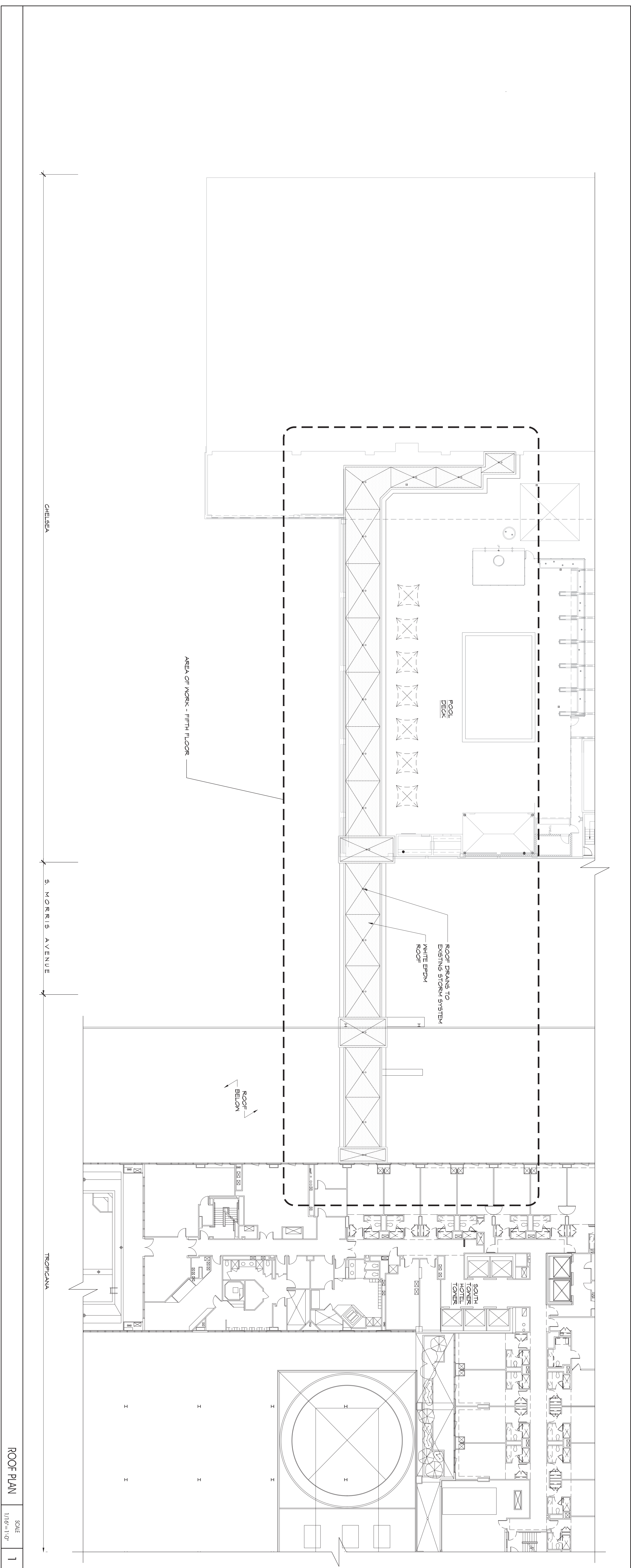
William A. Sienko, "New House" Expense 2 (INTERIOR)

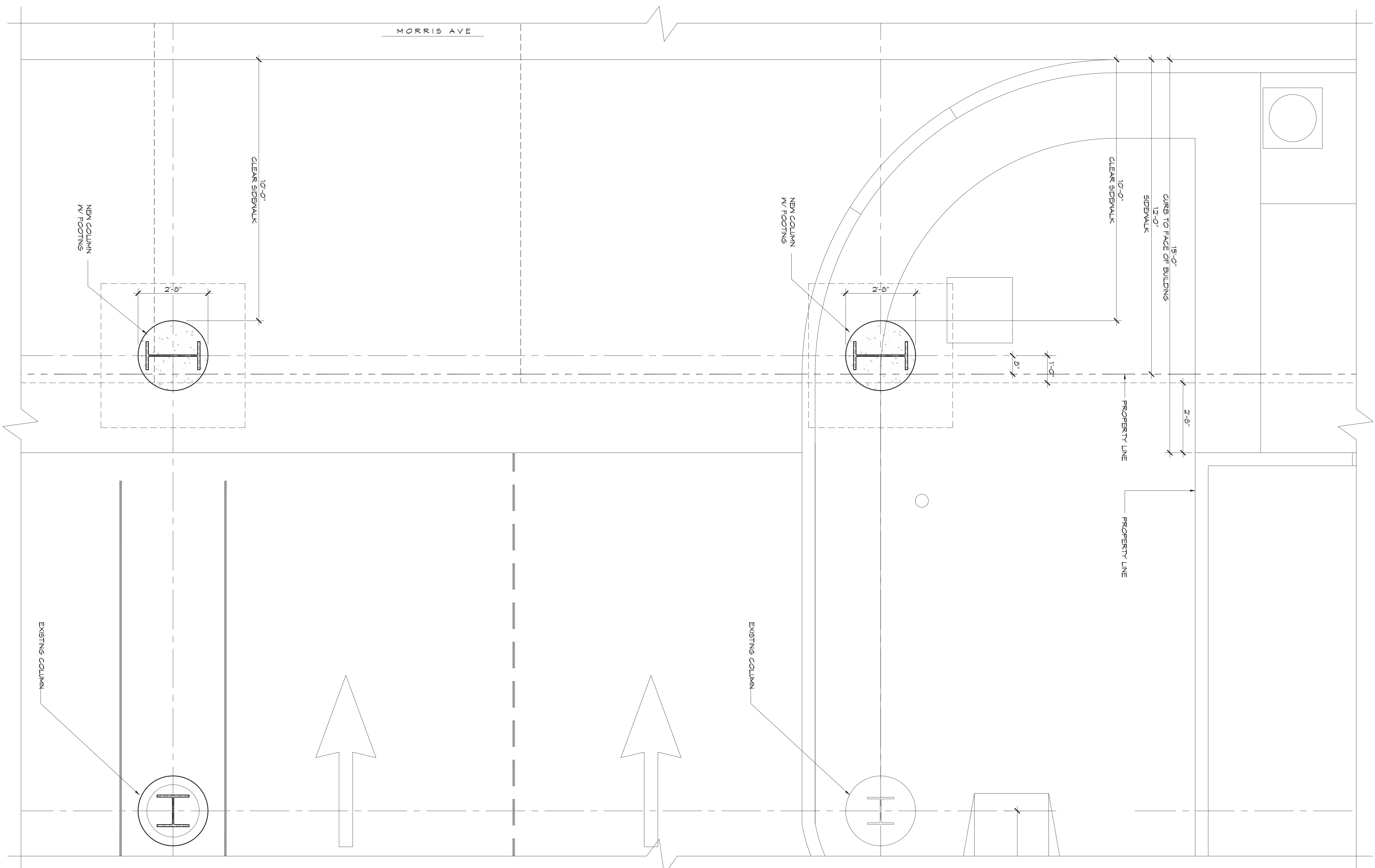
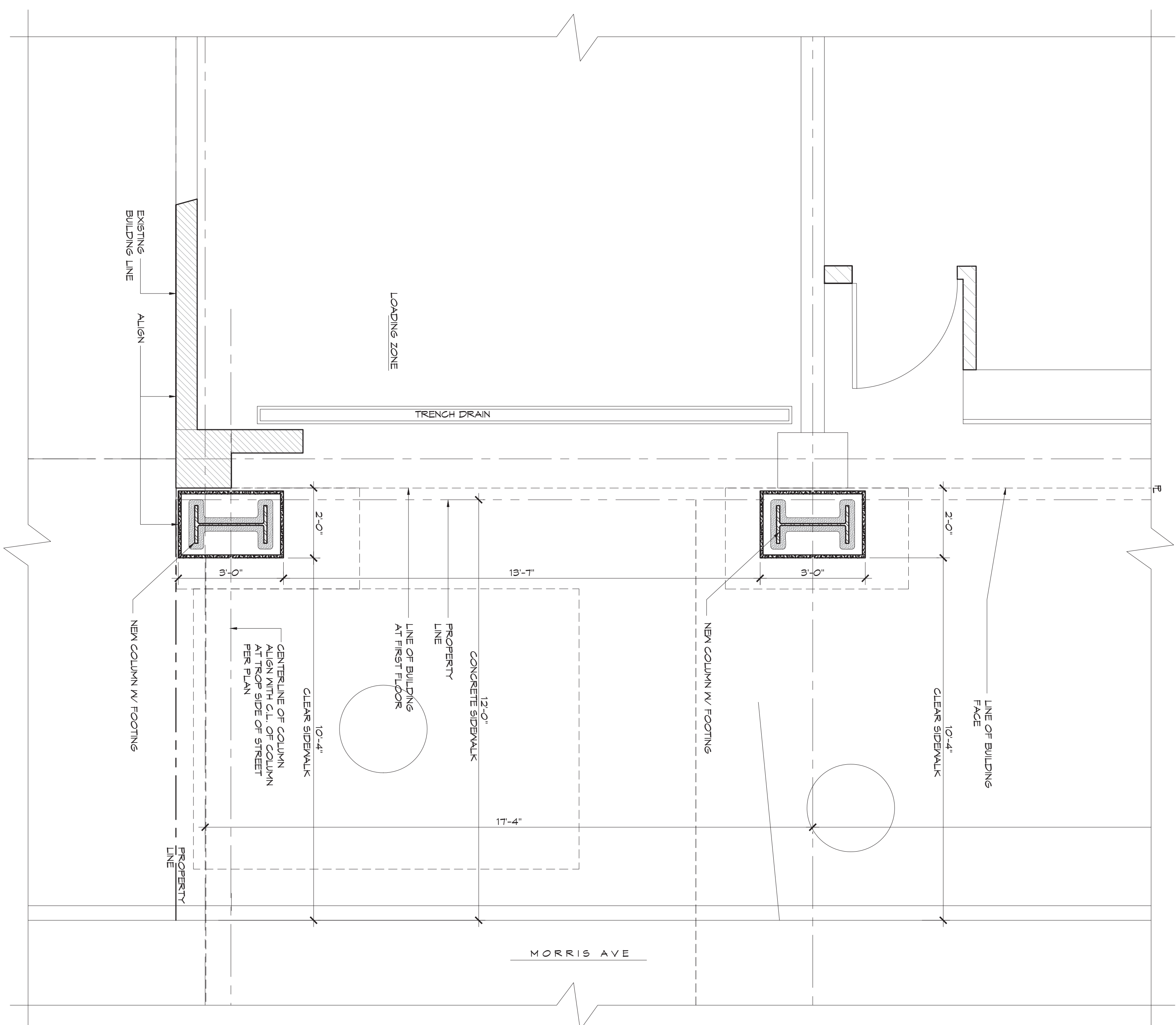
TROPICANA
ATLANTIC CITY

TROPICANA
CONNECTOR BRIDGE
BRIGHTON AVE &
THE BOARDWALK
ATLANTIC CITY, NJ 08401

[illegible]

DRAWING TITLE	
ROOF PLAN	
DRAWN BY:	MS
REVIEWED BY:	YDG
PROJECT NO.	17000.24
DRAWING NO.	
A-103	





SOSH

Atlantic City
1020 Atlantic Avenue
Atlantic City, NJ 08401
T: 609.345.5222
F: 609.345.7486
www.soshatch.com

new york
145 West 57th Street
New York, NY 10011
T: 212.246.5777
F: 212.246.5777

Thomas J. Sikes, A.I.A., P.P.
Founding Principal
William A. Siermo, A.I.A., P.P.
Founding Principal
Noy Hozeven, A.I.A., P.P.
Founding Principal
Mark Peltola, A.I.A.
Christopher M. Menchini, NCARB
Principal
Kimberly McCarron, NCARB
Principal

Value

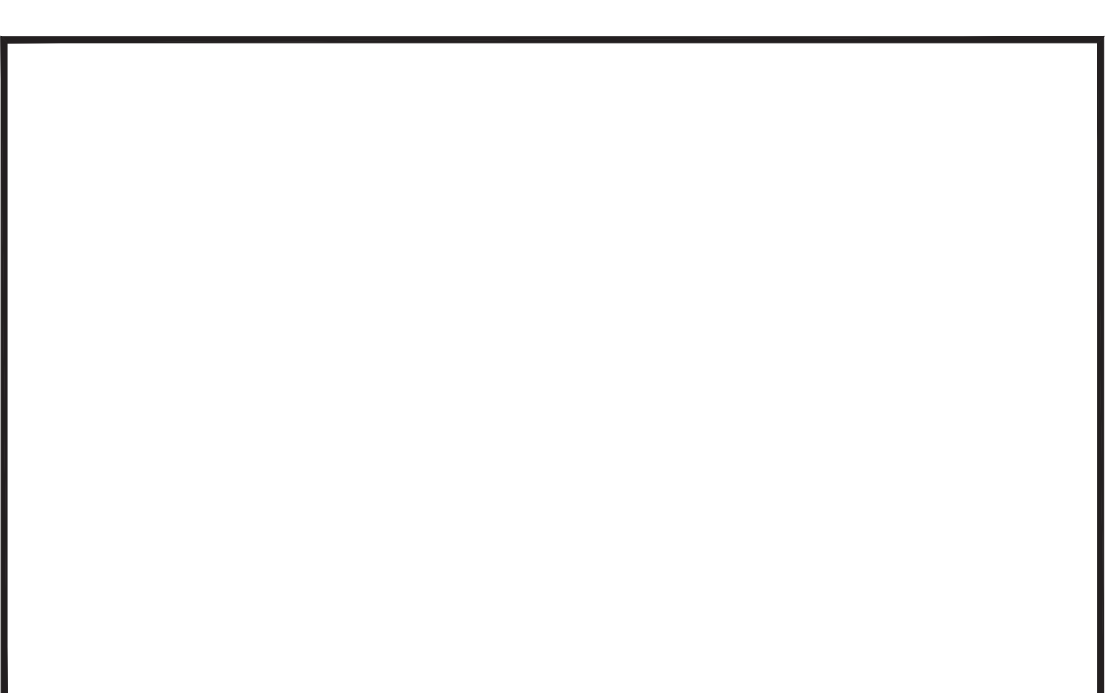
William A. Siermo, "New House" Expense 2 (INTERIOR)

TROPICANA
ATLANTIC CITY

TROPICANA
CONNECTOR BRIDGE
BRIGHTON AVE &
THE BOARDWALK
ATLANTIC CITY, NJ 08401

[illegible]

DRAWING TITLE	
PLAN DETAIL	
FIRST FLOOR - GRADE LEVEL	
DRAWN BY:	YDG
REVIEWED BY:	YDG
PROJECT NO.	17000A.24
DRAWING NO.	
A-110	



SO STH

Atlantic City
1020 Atlantic Avenue
Atlantic City, NJ 08401
T: 609.345.5222
F: 609.345.7486
www.sosthcity.com

new york
145 West 57th Street
New York, NY 10019
T: 212.246.2777
F: 212.246.2777

Thomas J. Skuse, A.I.A., P.P.
Founding Principal
William A. Salerno, A.I.A., P.P.
Founding Principal
Noy Hezzen, A.I.A., P.P.
Founding Principal
Mark Reiblich, A.I.A.
Christopher M. Mancini, NCARB
Principal
Kimberly McCarron, NCARB
Principal

TROPICANA
ATLANTIC CITY

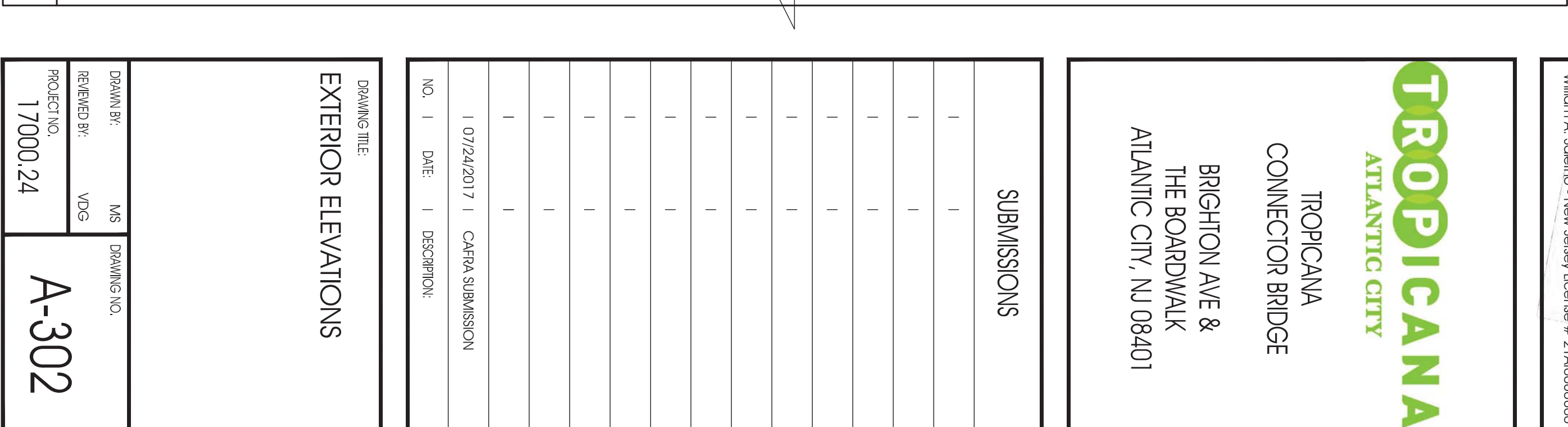
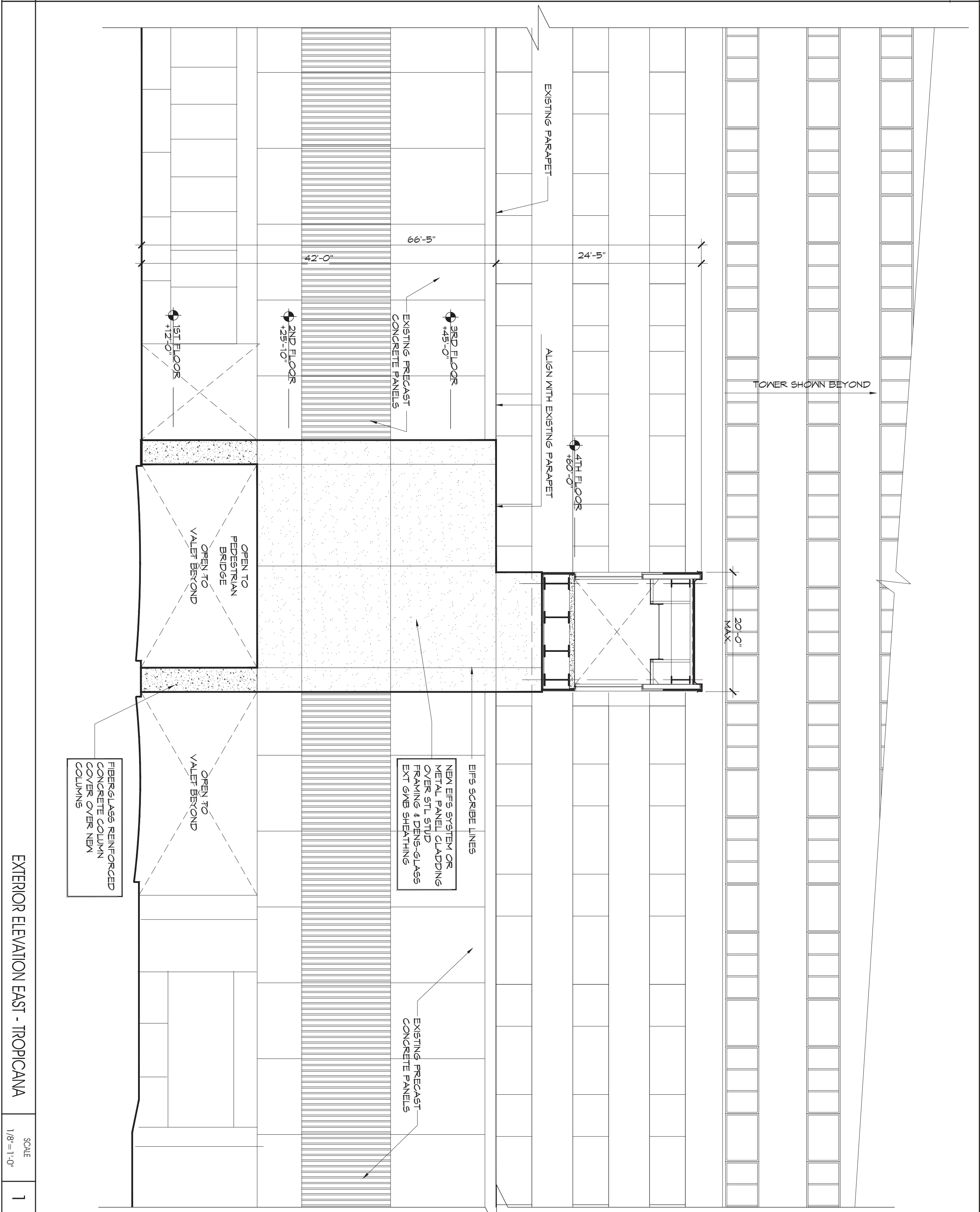
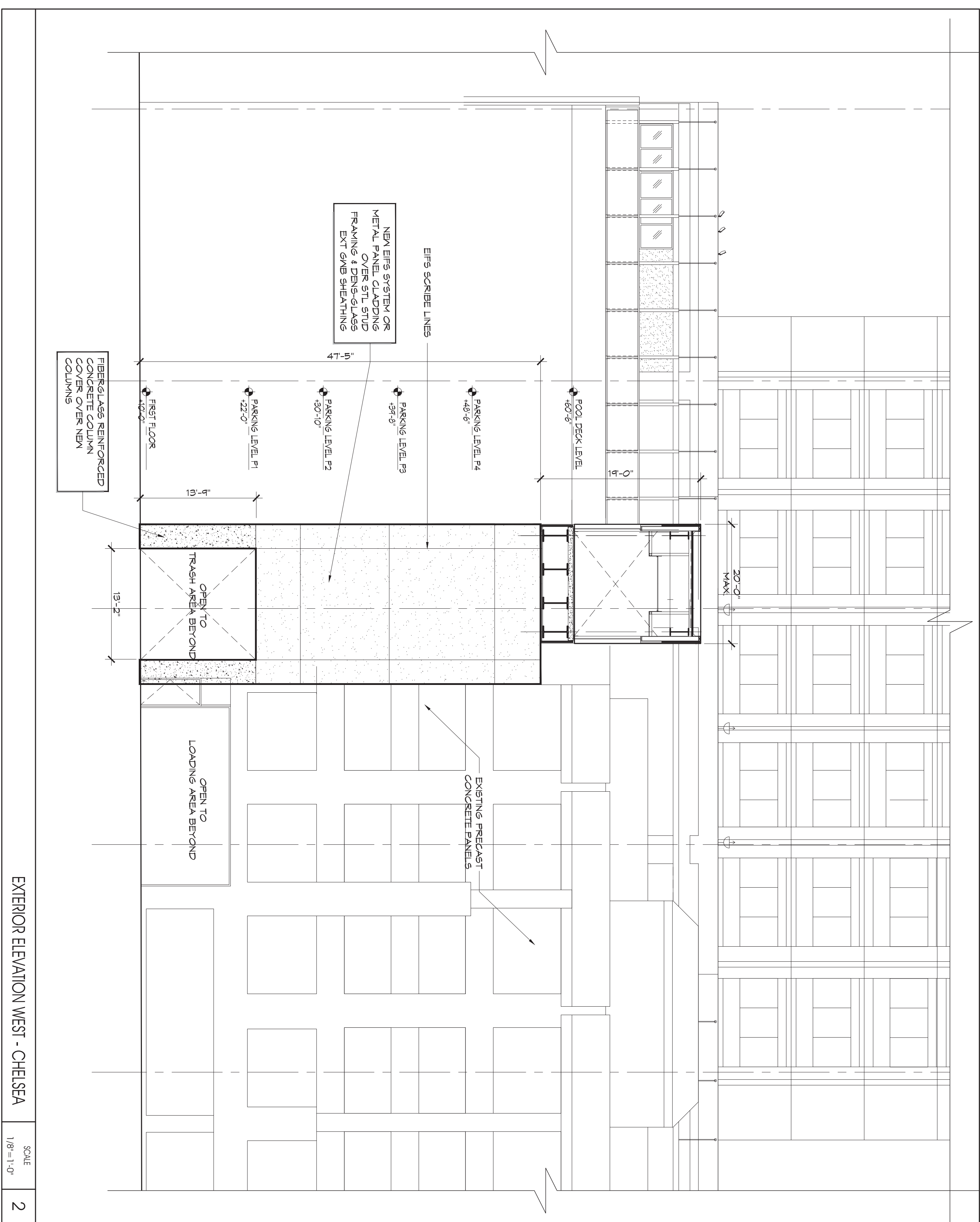
TROPICANA
CONNECTOR BRIDGE

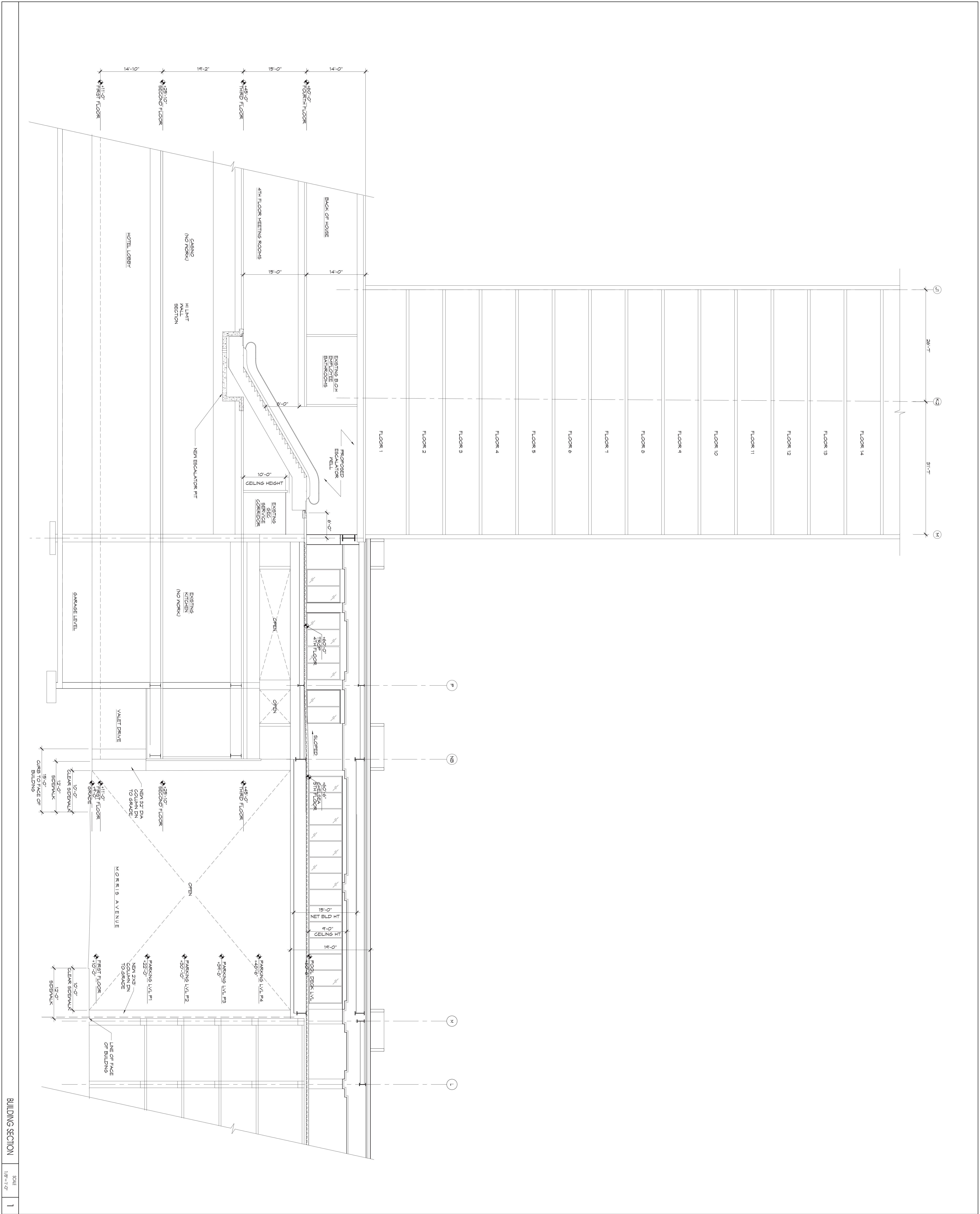
BRIGHTON AVE &
THE BOARDWALK

ATLANTIC CITY, NJ 08401

[illegible]

DRAWING TITLE	
EXTERIOR ELEVATIONS	
DRAWN BY:	MS
REVIEWED BY:	VJG
PROJECT NO.	DRAWING NO.
17000.24	A-302



[illegible][illegible][illegible][illegible]