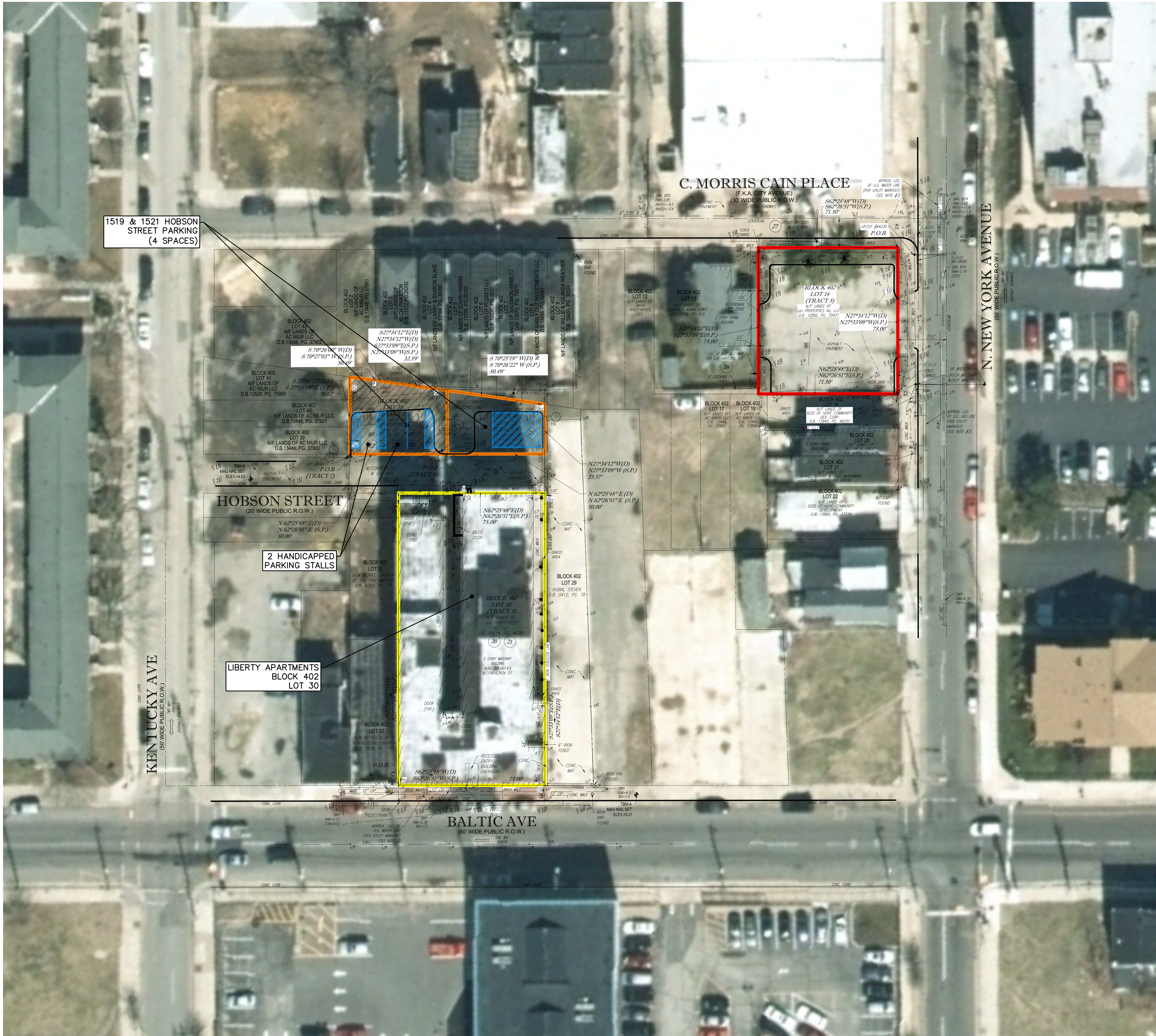


DATE: 02/08/2019 11:45 AM 1519 & 1521 HOBSON STREET PARKING (4 SPACES)



GENERAL NOTES

1. AERIAL ORTHOPHOTOGRAPHY TAKEN FROM NJ OFFICE OF INFORMATION TECHNOLOGY (NJ.OIT), OFFICE OF GEOGRAPHIC INFORMATION SYSTEMS (OGIS), NEW JERSEY 2015 HIGH RESOLUTION ORTHOPHOTOGRAPHY, NAD83(2011) NJ STATE PLANE FEET, MRSID TILES.
2. EXISTING CONDITIONS AND PROPERTY BOUNDARIES TAKEN FROM THE FOLLOWING SOURCES:
 - PLAN ENTITLED, "ALTA/NSPS LAND TITLE SURVEY; WINN DEVELOPMENT; 1519 BALTIC AVENUE; LOTS 30, 37, 38/BLOCK 402; CITY OF ATLANTIC CITY, ATLANTIC COUNTY; STATE OF NEW JERSEY" PREPARED BY CONTROL POINT ASSOCIATES, INC., FILE NO. 05-180249, DRAWING NO. 1 OF 1; DATED 9-14-2018, LAST REVISED 12-17-18.
 - PLAN ENTITLED, "ALTA/NSPS LAND TITLE SURVEY; WINN DEVELOPMENT; 226 NORTH NEW YORK AVENUE; LOT 14/BLOCK 402; CITY OF ATLANTIC CITY, ATLANTIC COUNTY; STATE OF NEW JERSEY" PREPARED BY CONTROL POINT ASSOCIATES, INC., FILE NO. 05-180249-00, DRAWING NO. 1 OF 1; DATED 9-14-2018, UNREVISED.

LEGEND

- PROPERTY BOUNDARY
- UNUSED DESIGNATED PARKING AREA
- PROPOSED DESIGNATED PARKING AREA
- PROPOSED STRIPING

02/08/2019	1	INITIAL SUBMISSION	CWH	AWR
ISSUE DATE	ISSUE NO.	SUBMISSION/REVISION	BY	APPR.
SENCIT LIBERTY PROJECT BLOCK 402, LOTS 30, 37 & 38 CITY OF ATLANTIC CITY, ATLANTIC COUNTY, NEW JERSEY				
SITE PLAN FOR LIBERTY APARTMENTS ON BLOCK 402, LOTS 30, 37 & 38				
WINN DEVELOPMENT 6 FANEUIL HALL MARKETPLACE BOSTON, MASSACHUSETTS 02109				
DAVID J. FLEMING, P.E. NEW JERSEY LICENSE NO. 245603321600				
02/08/2019				
WIN 001.01				
MARATHON Engineering & Environmental Services Atlantic City Office 1616 Pacific, Suite 501, Atlantic City, NJ 08401 ph (609) 437-2100 fax (609) 437-2101 Certificate of Authorization #24GA27995700				
ALL DOCUMENTS PREPARED BY MARATHON ENGINEERING AND ENVIRONMENTAL SERVICES, INC. ARE INSTRUMENTS OF SERVICE IN RESPECT TO THE PROJECT THEY ARE NOT INTENDED OR REPRESENTED TO BE OBTAINED FOR REUSE OR FOR ANY OTHER PROJECT. ANY REUSE, WITHOUT WRITTEN AND EXPLICIT PERMISSION BY MARATHON ENGINEERING AND ENVIRONMENTAL SERVICES, INC. SHALL BE AT THE USER'S SOLE RISK AND WITHOUT LIABILITY ON THE PART OF MARATHON ENGINEERING AND ENVIRONMENTAL SERVICES, INC. FROM ALL CLAIMS, DAMAGES, LOSSES, AND EXPENSES ARISING OUT OF OR FROM REUSE OF ANY DOCUMENT.				
SCALE: 1" = 20' DRAWN BY: C. HARRIS SHEET: 1 OF 1 APPROVED: AWR				
C0102				

EXISTING UTILITY INFORMATION SHOWN ON THESE PLANS IS FURNISHED BY THE UTILITY COMPANIES AND/OR THE SURVEYOR AND THE ACCURACY THEREOF IS NOT THE RESPONSIBILITY OF MARATHON ENGINEERING & ENVIRONMENTAL SERVICES, INC. IT IS THE RESPONSIBILITY OF THE OWNERS AND/OR CONTRACTOR TO CALL 1-800-272-1000 FOR FIELD LOCATION OF UNDERGROUND UTILITIES PRIOR TO CONSTRUCTION.