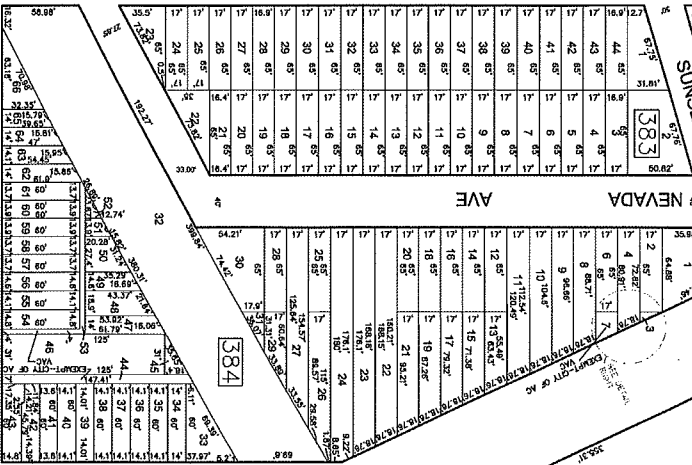


TEXAS AVE

FAIRMOUNT



SUNSET AVE

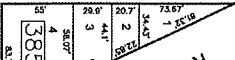
NEVADA AVE

TURNPIKE

BEACH THORFARE

FLORIDA AVE

AVE



ISLAND AVE

AVE

387

386

388

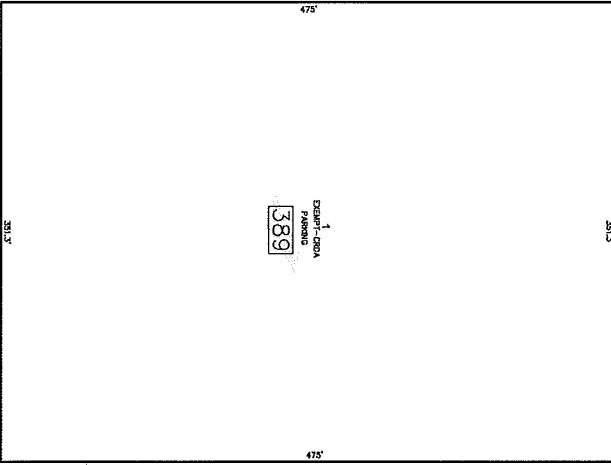
SHEET 81

SHEET 59

IRBERT

BLAKE ST

MISSISSIPPI AVE



MEDITERRANEAN AVE

AVE

384

DETAIL

RD

TURNPIKE 3

DATE	BY	REVISIONS
		LIC NOT BLOCK

THIS TAX MAP SUPERSEDES APPROVED 2000 NEW JERSEY DEPARTMENT SERIAL NUMBER X

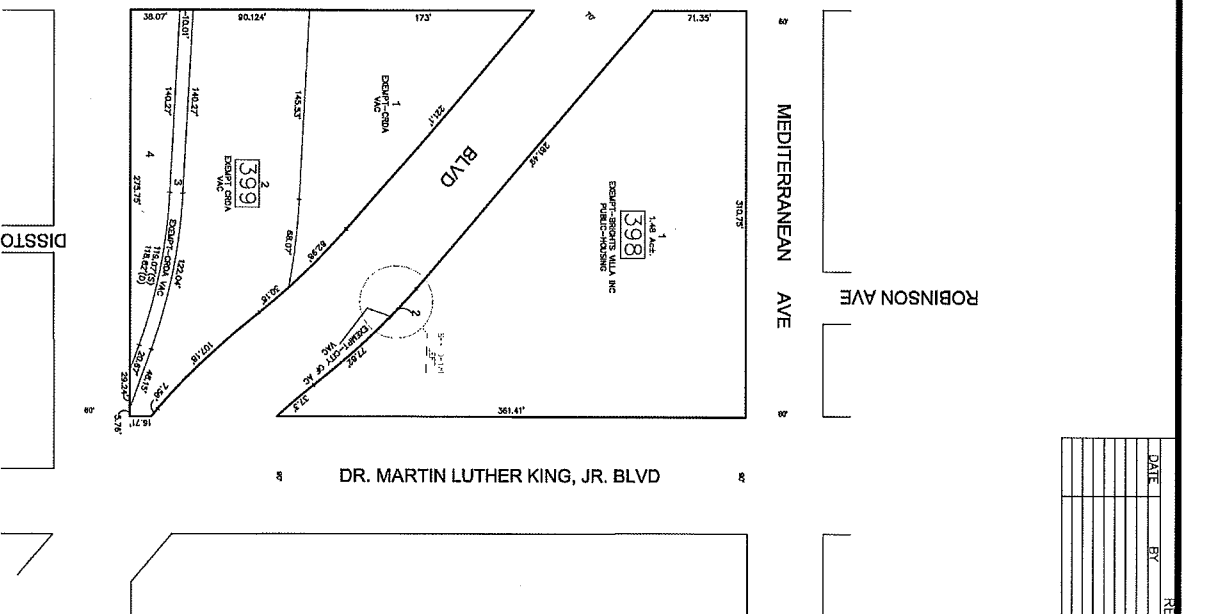
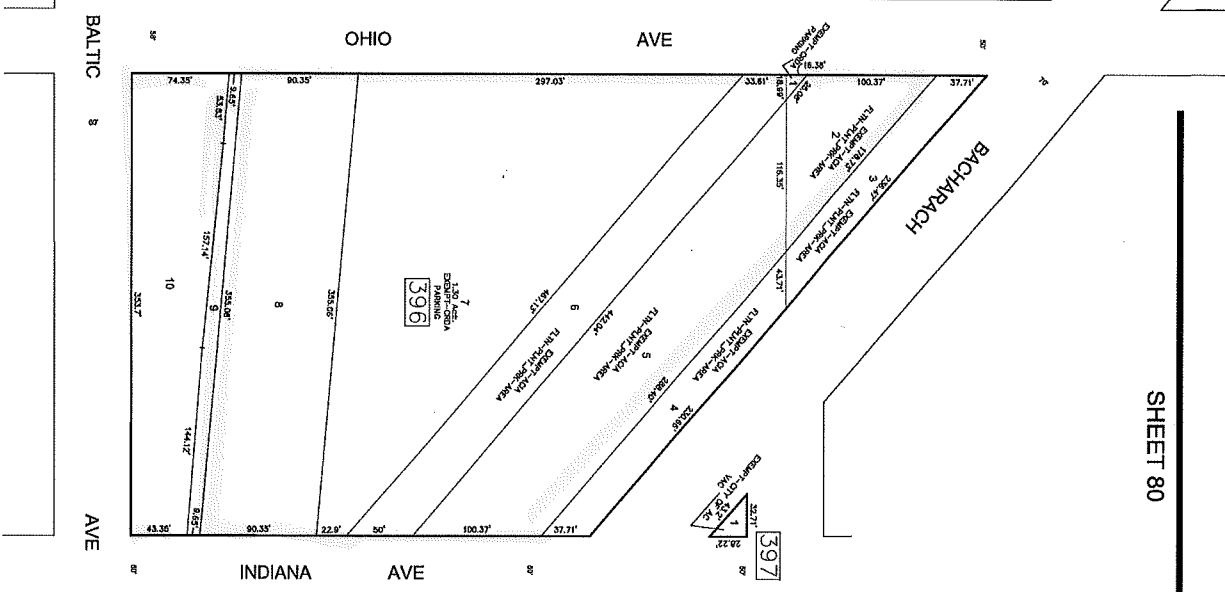
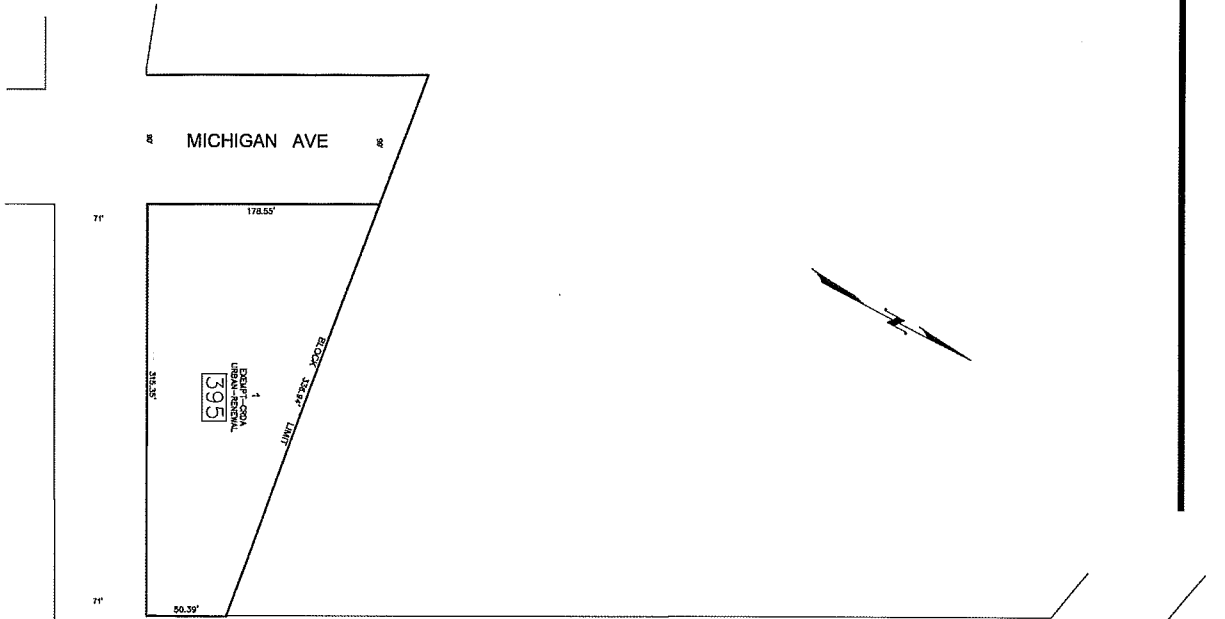
PENDING STATE APPR

TAX MAP CITY OF ATLANTIC CI

JOSEPH M. DOLAN, PLS

ALBANY COUNTY, NEW JERSEY

SCALE: 1" = 50'



SHEET 80

REVISIONS		
DATE	BY	DESCRIPTION

SHEET 57

THIS TAX MAP SUPERSEDES THE TAX MAP APPROVED XXXXX, NEW JERSEY DEPARTMENT OF TAXATION SERIAL NUMBER XXXXX.

PENDING STATE APPROVAL

TAX MAP CITY OF ATLANTIC CITY

JOSEPH M. DOLAN, PLS

MANAGER, LAND SURVEY NEW JERSEY DEPARTMENT OF TREASURY AND BUREAU OF REVENUE ATLANTIC CITY, NEW JERSEY 08401

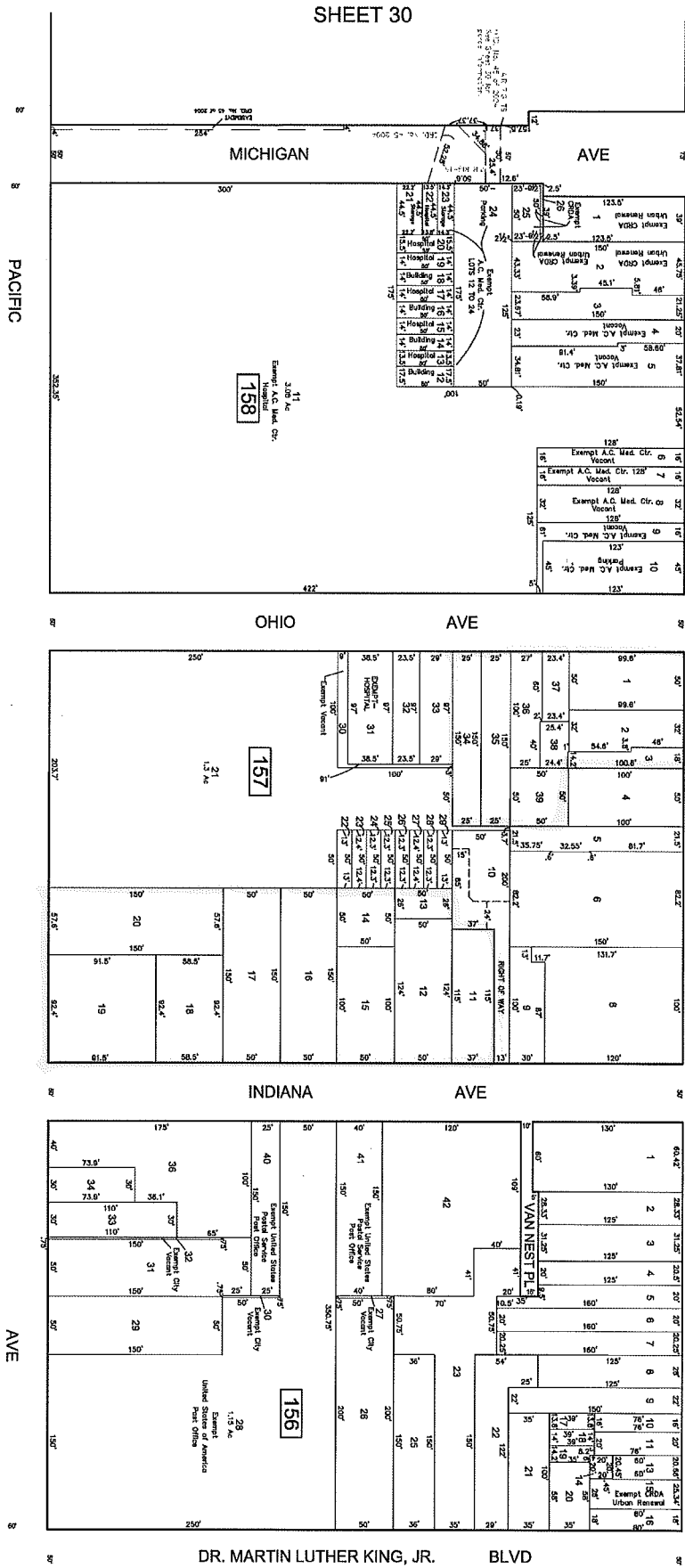
THIS SHEET HAS BEEN DRAWN USING COORDINATES ADJUSTED BY...



REVISIONS		
DATE	BY	LIC. NO. BLOCK

ATLANTIC

AVE



PACIFIC

AVE

G-200P A 157 1-3, 34-39 11-20

SHEET 8

SHEET 9

THIS TAX MAP SUPERSEDES THE TAX MAP APPROVED XXXXX BY THE NEW JERSEY DEPARTMENT OF TAXATION SERIAL NUMBER XXXX.

PENDING STATE APPROVAL

TAX MAP  
CITY OF ATLANTIC CI.  
ATLANTIC COUNTY, NEW JERSEY  
JOSEPH M. DOLAN, PLS  
MUNICIPAL LAND SURVEYOR  
NEW JERSEY LICENSE NO. 2882  
OFFICE: 1000 CITY CENTER  
ATLANTIC CITY, NEW JERSEY 08401

THIS SHEET HAS BEEN DRAWN USING COMPUTER AIDED DRAWING