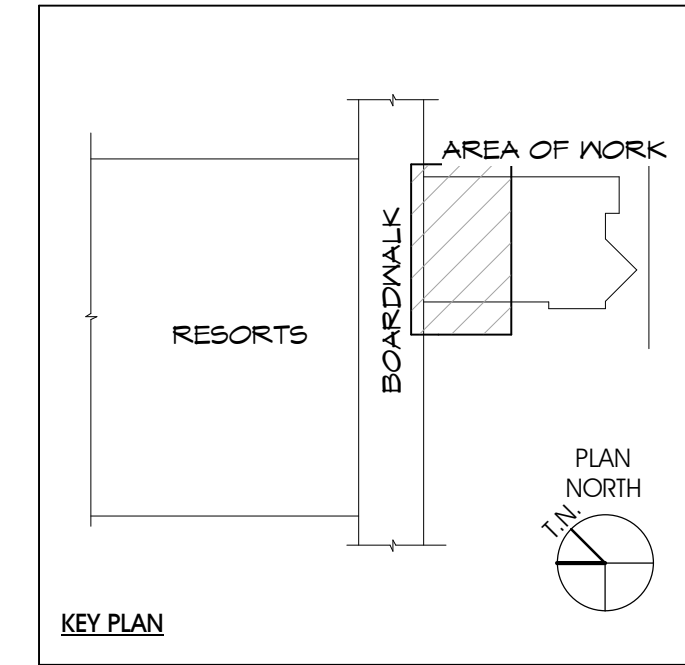


BUILDING SECTION - NORTH SOUTH @ PIER EXPANSION

SCALE 3/16" = 1'-0" 2



LANDSHARK BAR & GRILL EXPANSION

AT RESORTS ATLANTIC CITY, NJ 08401

Block 1, Lot 142 & 142.01

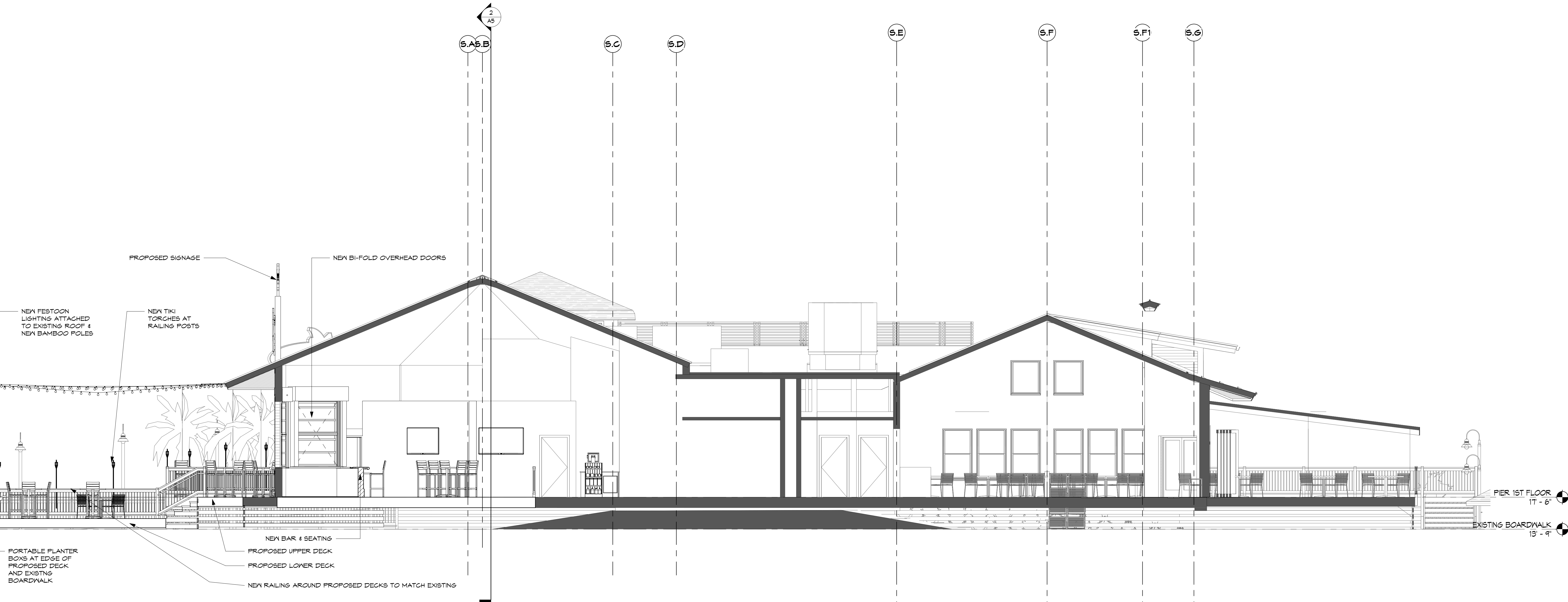
SITE PLAN SUBMISSION 2018 11 19

REVISIONS

NO.	DATE	DESCRIPTION

DRAWING TITLE: BUILDING SECTIONS

DRAWN BY:	DATE: 2018 11 19
REVIEWED BY:	
SCALE: AS NOTED	DRAWING NO. A5
PROJECT NO. 18048.00	



BUILDING SECTION - EAST WEST @ PIER EXPANSION

SCALE 3/16" = 1'-0" 1

SOSH

atlantic city new york  
 1020 Atlantic Avenue 145 West 57th Street  
 Atlantic City, NJ 08401 New York, NY 10019  
 T: 609.345.5222 T: 212.246.2770  
 F: 609.345.7486 F: 212.246.2771  
 www.sosharch.com

Thomas J. Sykes, A.I.A., P.P.  
 Founding Principal  
 William A. Salerno, A.I.A., P.P.  
 Founding Principal  
 Nory Hazaveh, A.I.A., P.P.  
 Founding Principal  
 Mark Petrella, A.I.A.  
 Principal  
 Christopher M. Menchin, NCARB  
 Principal  
 Kimberly McCarron, NCARB  
 Principal

*Mark Petrella*  
 Mark Petrella - New Jersey License # AJ 12603