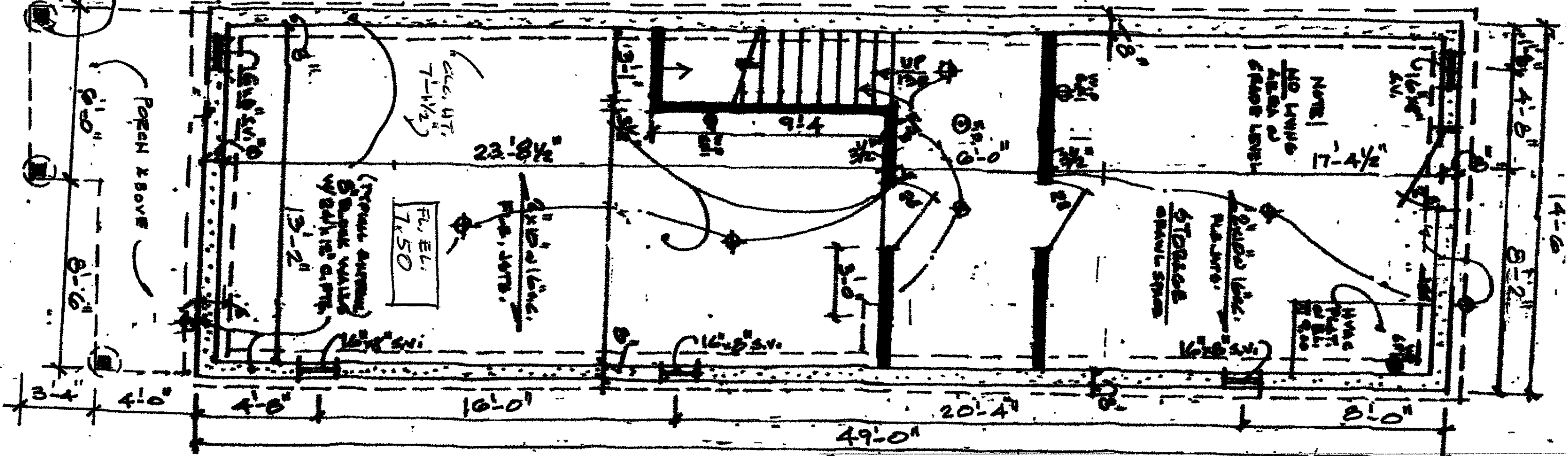


# robert e. bolton · associates architecture · land planning

207 RANGLAND PKWY, MT LAUREL N.J. (609)-204-0350

ONE COL. W.  
TRUSS TOP & BOTTOM  
ANCHOR PLATES W/  
12" x 36" DEEP ANCH. PILE  
(TT9)



NOTE!

1. B.F.E. = 9.00 EL.
2. ADJACENT GRADE = 7.20 EL.
3. CRAWL SPACE FLOOR = 7.50 EL.
4. 1<sup>ST</sup> FLOOR = 15.50 EL.
5. FLOOD ZONE = AE

ALL ELEVATIONS BASED ON  
1988 DATUM NAVD

GRADE EL.  
7.20

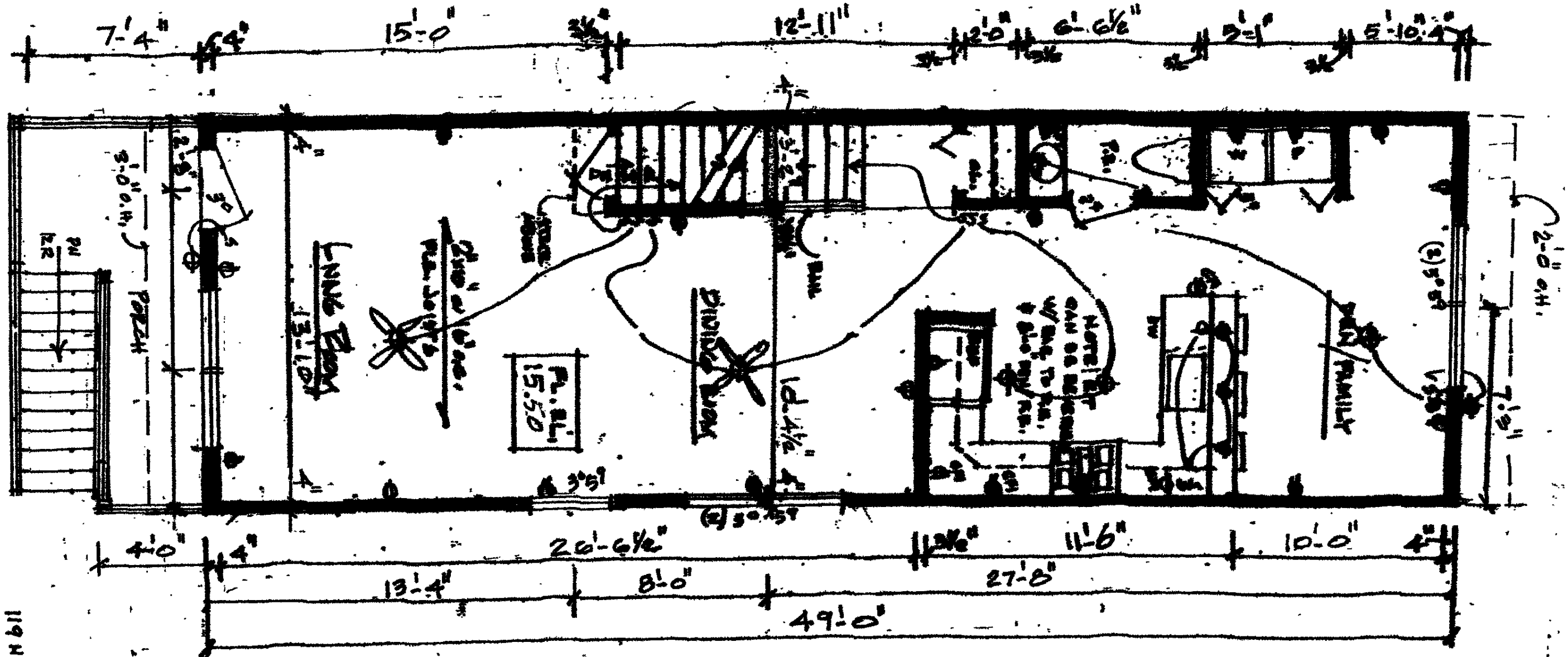
*[Handwritten signature]*

FORWARD A. WILSON  
A.S. ARCHITECT & P.L.L.C.

ATLANTIC CITY, N.J.  
117 N. GEORGIA AVE.  
PHONE 1 338 407113

A-1

**FIRST FLOOR PLAN**  
 SCALE: 1/4" = 1'-0"



*AWL*

(A-2)

EDWARD L. LESCHNER  
 N.T. ARCHITECTS

119 N. GEORGE AVE.  
 ATLANTA CITY, GA.

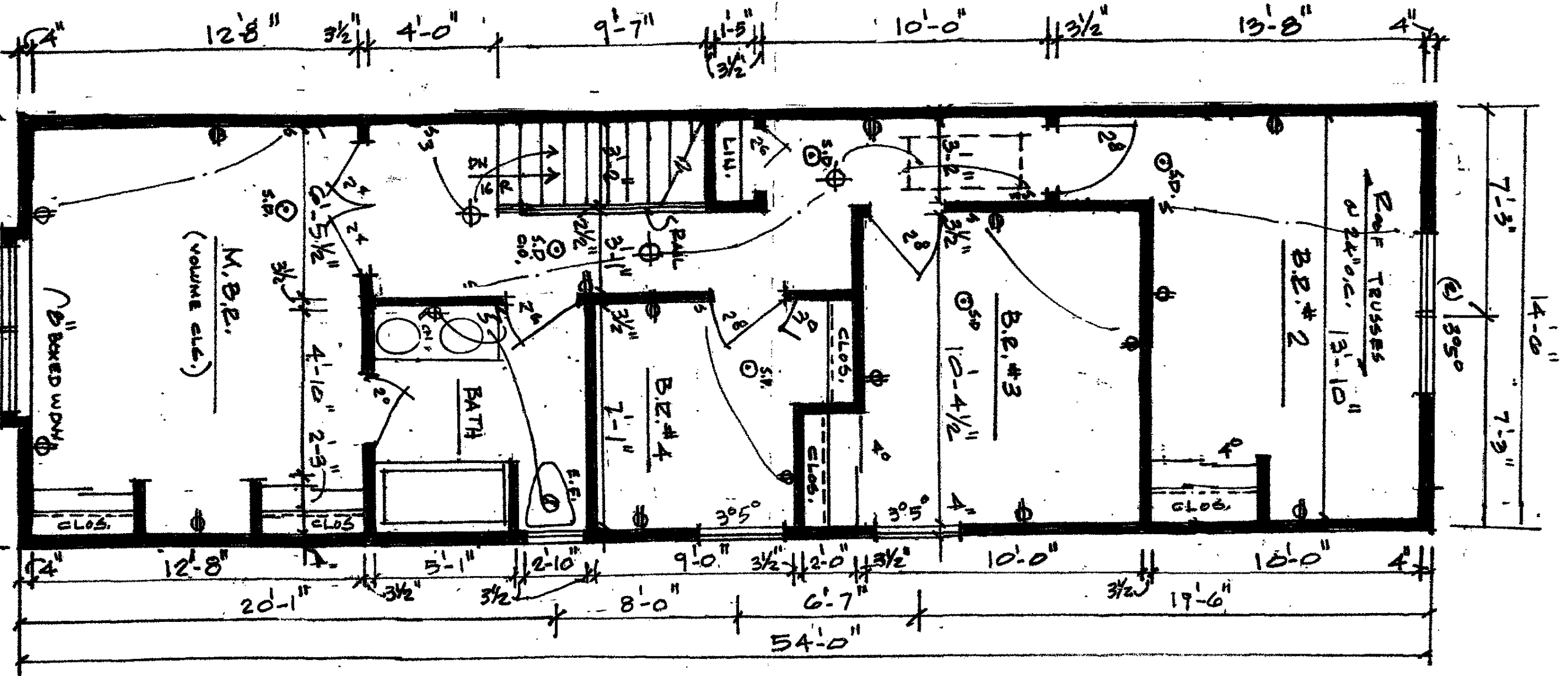
DATE: 5-25-68

EDWARD L. KELLER, ARCHITECT  
N.Y. # 07771

SECOND FLOOR PLAN

119 N. GEORGIA AVE  
ATLANTA, GA. N.Y.  
BLOCK: 388 LOT: 13

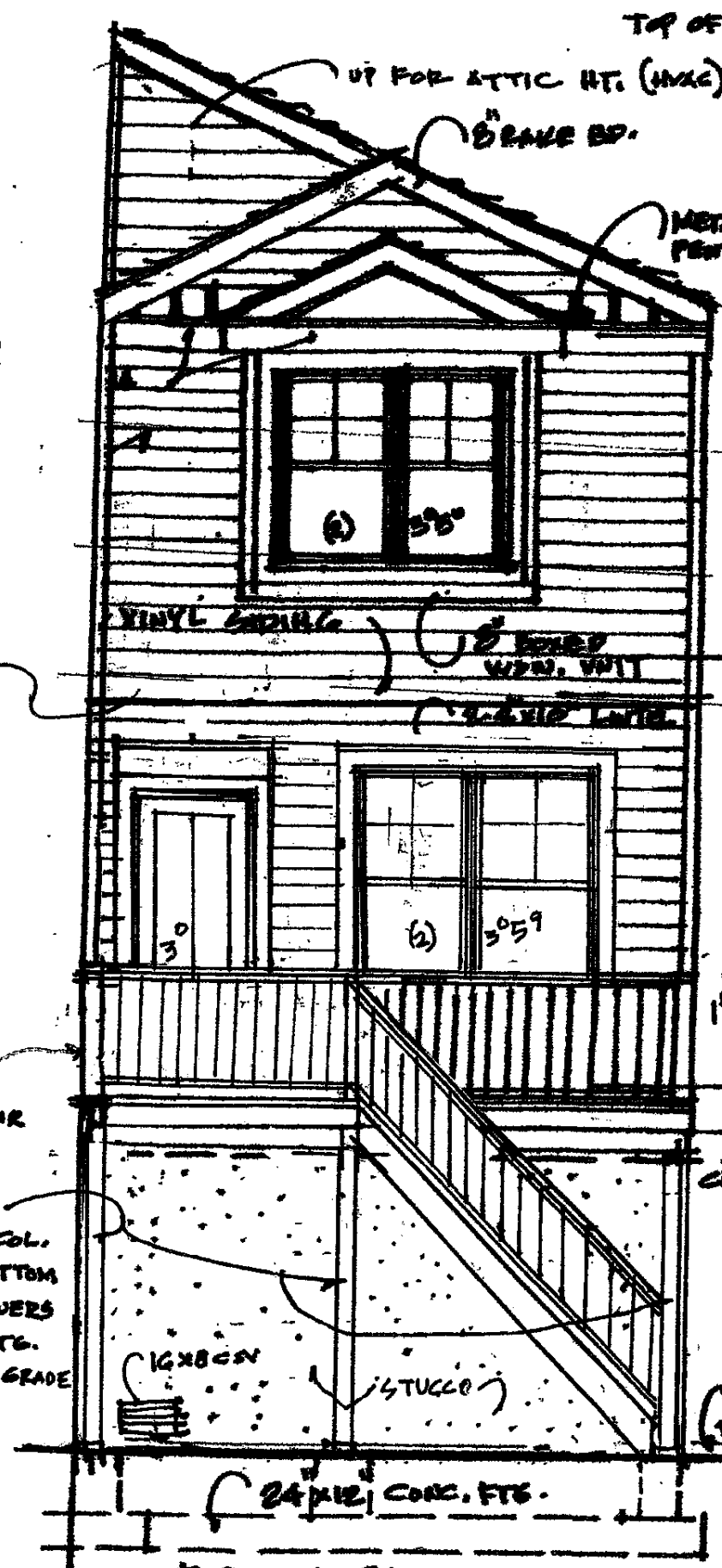
1.3



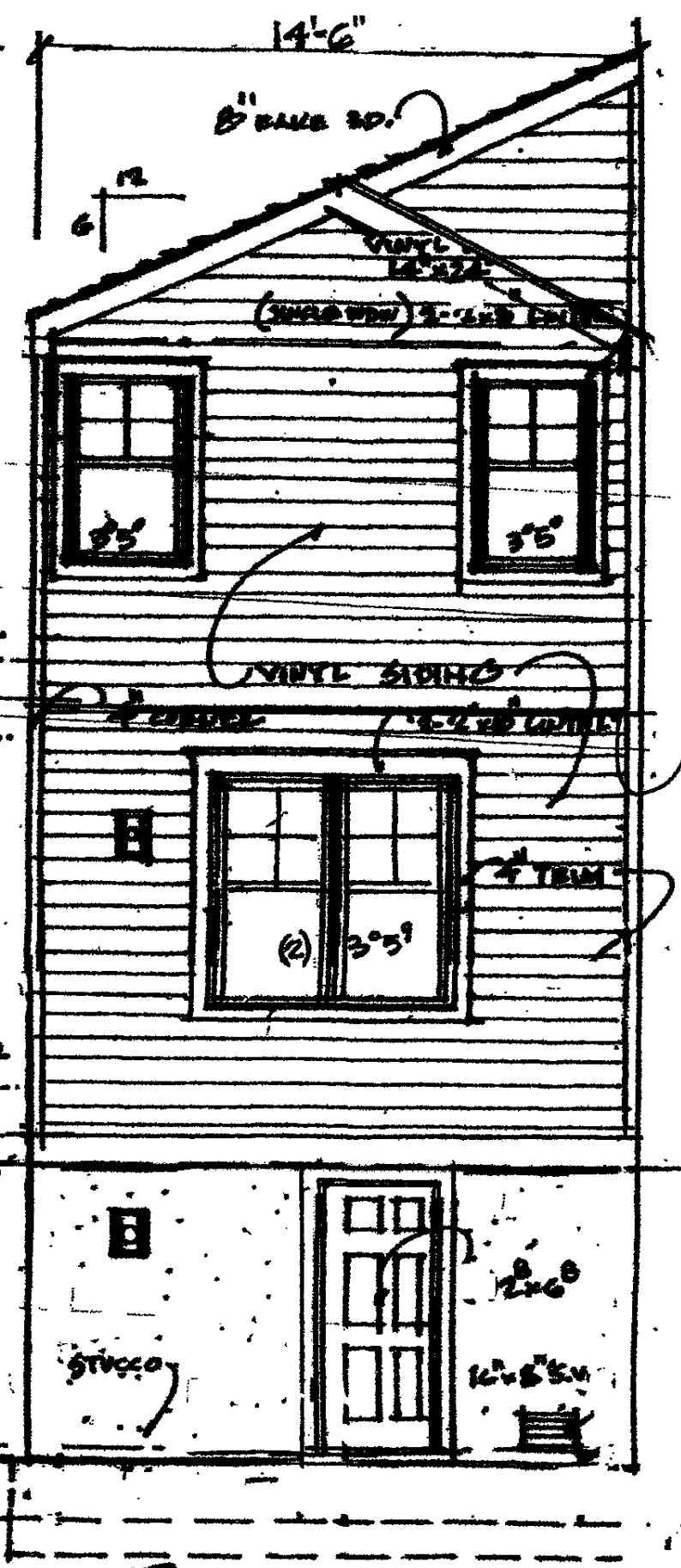
*Handwritten signature*

EDWARD L. KELLNER  
N.J. ARCHITECT #0774

BLOCK 336 LOT 13  
119 NORTH GEORGIA AVE  
ATLANTIC CITY, NJ 08401



**FRONT ELEVATION**  
SCALE: 1/4" = 1'-0"



**REAR ELEVATION**  
SCALE: 1/4" = 1'-0"

(A-4)

BOXED WDW  
@ H.B.R.

FIBERGLAS EOE SHINGLES

*Edmund Kelly*  
EDMUND KELLY  
N.J. ARCHITECT

PL. HT.

5" FASCIA

CLG./PL. HT.

WDW HT. 7'-0" A.P.F.

2<sup>ND</sup> FLR

ALL D.E. WDW MEET  
EXIT REQUIREMENTS  
& GLAZED IMPACT RESISTANT

8'-0"

VINYL SIDING

2<sup>ND</sup> FLR

CLG.

CLG.

10"

4'-0" PORCH

9'-0"

1<sup>ST</sup> FLOOR

WATER TABLE & 0" BOTTOM TRIM (CONT.)

FL. EL.:  
15.20

16"

6" X 6" W.D.  
POST W/  
TECO TOP  
& BOTTOM  
COL. ANCHORS  
AND 12" Ø CFTG.

STAIRS

STUCCO OVER 8" MASONRY WALL  
AT BOTTOM LEVEL

16" X 8" S.X.

16" X 8" (SMART VENT)

16" X 8" S.X.

FL. EL.

GRADE: 7.20

7'-1 1/2"

GARAGE FLR.

GRAVEL SPACE FLR.

24" X 12" CONC. FTG. @ MIN 3'-0" BELOW GRADE

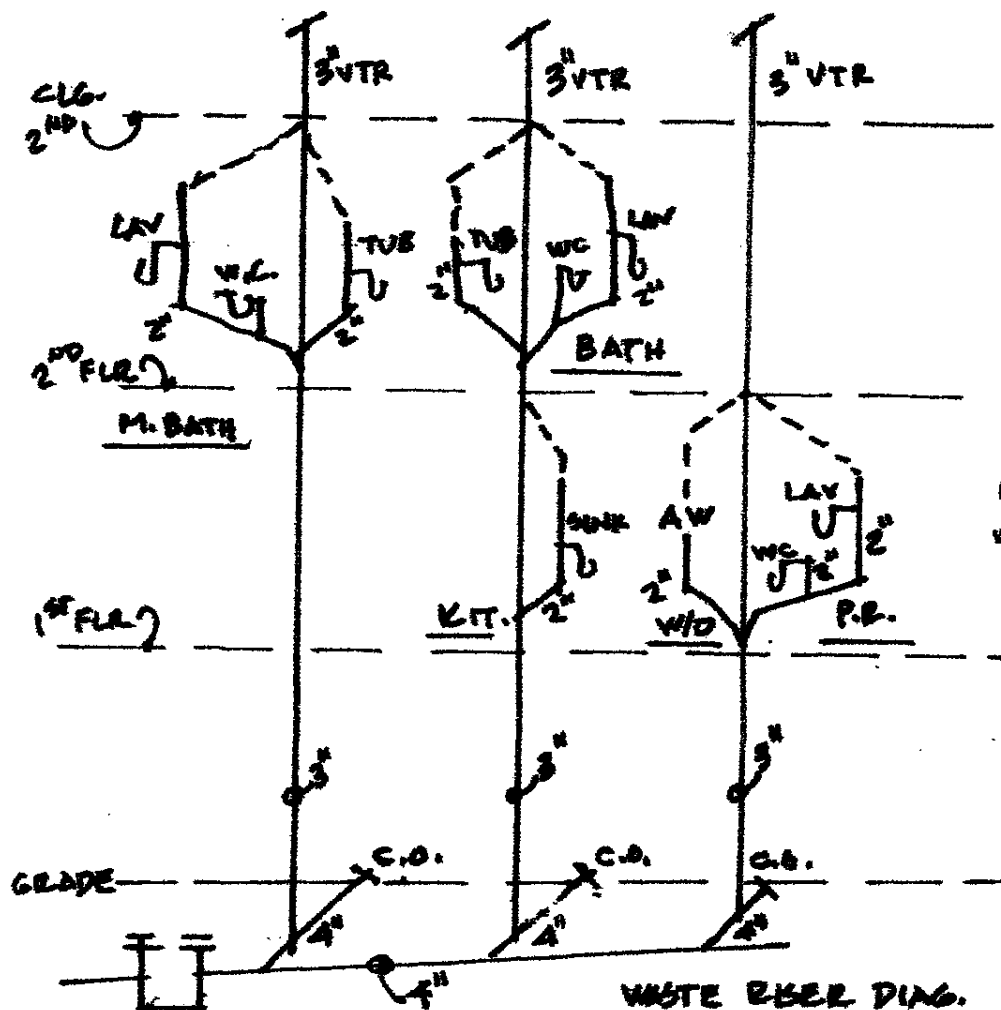
NOTE: LEFT SIDE OPPOSITE HAND W/  
BLANK WALL - NO WINDOWS

A-5

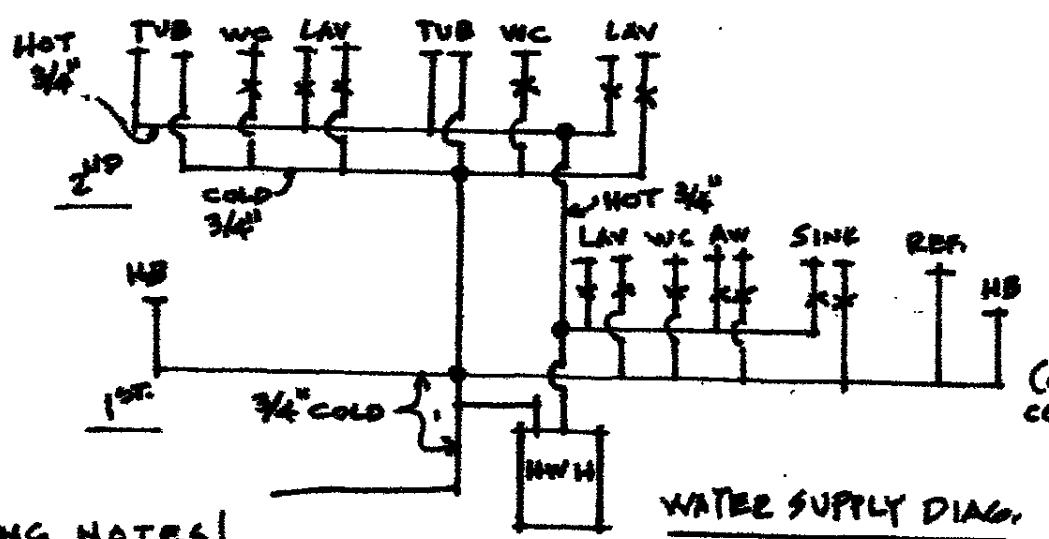
SIDE ELEVATION (RIGHT)  
SCALE: 1/4" = 1'-0"

119 N. GEORGIA AVE.  
ATLANTIC CITY, N.J.

BLOCK: 938 LOT: 13



WASTE SEWER DIAG.



WATER SUPPLY DIAG.

**PLUMBING NOTES!**

1. PROVIDE BACK FLOW DEVICES ON ALL HOSE CONNECTIONS EXCEPT WATER METER & HWH
2. PRESSURE & TEMP. RELIEF VALVES WITH BLOWOFF PIPING PROVIDED (WORKING TEMP LESS THAN 210°)
3. ALL QUICK-CLOSE VALVES TO HAVE SHOCK ARRESTORS
4. C/O AT BASE OF STACKS, OR A P/B FIXTURE TO CLEAN DRAINS
5. NO FIXTURE TIE-IN OR HORIZ. DRAINS WITHIN 10 PIPE DIAMETERS DOWNSTREAM OF A STACK UNLESS FIXTURES ARE BACK VENTED.

NO OVERHANG (FASCIA ON WALL)



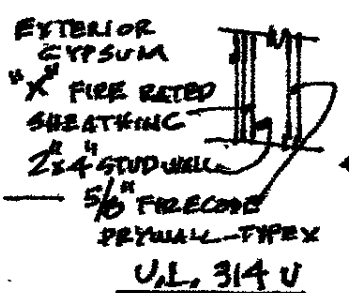
OPTION IF EXTENDING INTO SIDE YARD OF LESS THAN 3'-0" PROP. LINE

FIBERGLASS SHINGLES OVER 1/2" PLYND SHEATHING OVER 2"x8" RAFTERS @ 16" O.C.

5/8" SHEATHING IF 1" MIN. (1 HR. RATED) TYPE X R-30

ATTIC

2"x8" CLG. JOISTS @ 16" O.C.

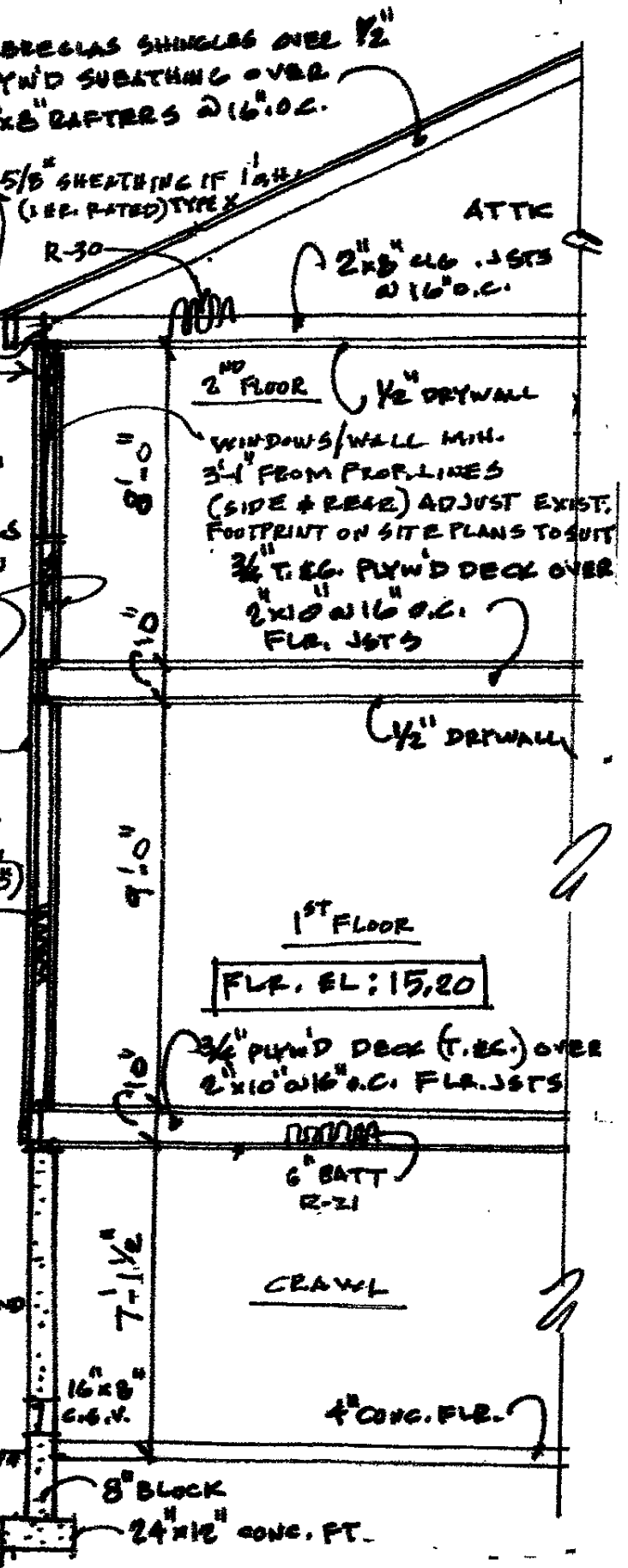
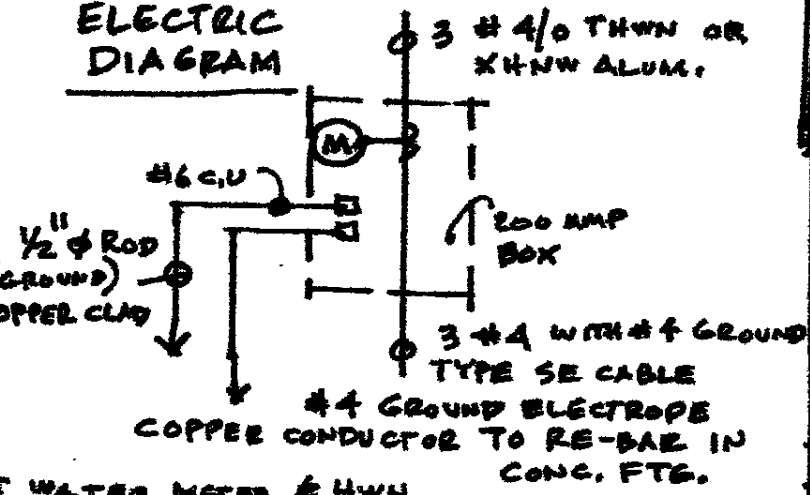


EXTERIOR GYPSUM 1/2" FIRE RATED SHEATHING 2x4 STUD WALL 5/8" FIRE RATED DRYWALL-TYPE X U.L. # 314 U (6.1# WP 8105) ONE HOUR RATING SEE A-B FOR CONSTRUCTION SEQUENCE

NOTE! (1 HR RATED SIDE WALLS) VINYL SIDING OVER 1/2" GYP. 1/2" RATED SHEATHING OVER 2"x4" @ 16" O.C. STUD WALLS W/ 5/8" F.R. DRYWALL ON THESE SIDE WALLS (TYPICAL) U.L. # 314 U

NOTE! WINDOWS THAT ARE NOT STORMWATCH (HURRICANE) RATED MAY BE USED W/ 1/8" O.S.B./PLYWOOD PANELS SECURED W/ 6" STEEL SCREWS (MAX PANEL SPAN - 8'-8") 3 1/2" BATT HI-R

**ELECTRIC DIAGRAM**



WALL (THRU) SECTION SCALE: 1/4" = 1'-0"

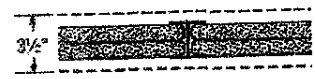
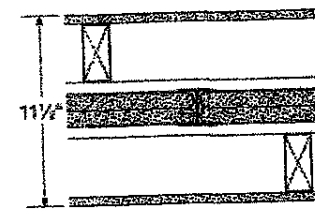
SINGLE FAMILY DWELLING - DETACHED

EDWARD KELLM N.S. ARCHITECT #07771

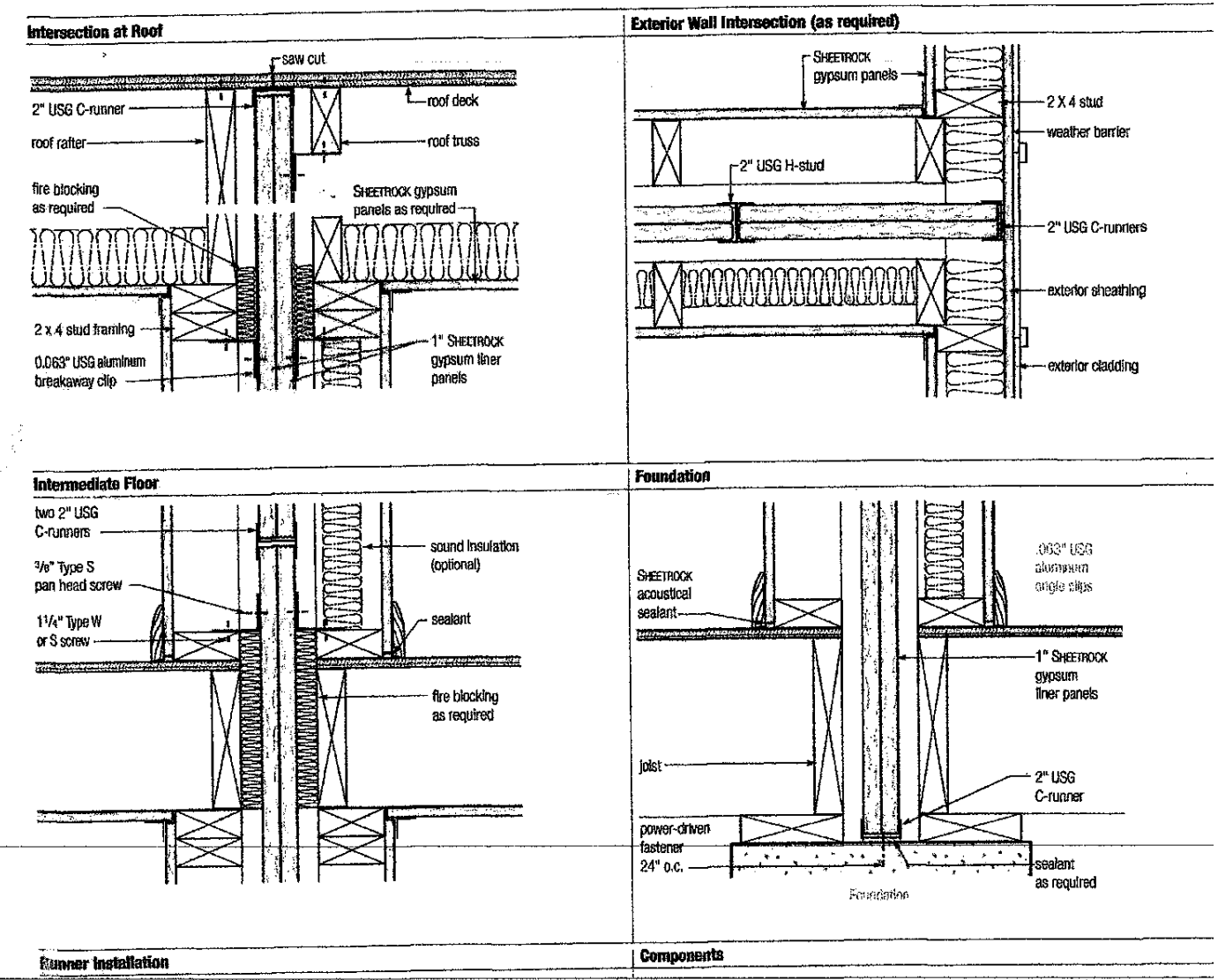
ATLANTIC CITY, 119 N. GEORGIA A BLK; 338 LOT; 11

A-6 C

All details, specifications and data contained in this literature are intended as a general guide. These products must not be used in a design or construction of any given structure without complete and detailed evaluation by a qualified structural engineer or architect to verify suitability of a particular product for use in the structure.

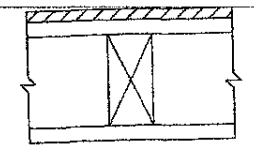
Fire-Rated Construction	Non-load-bearing	Acoustical Performance	Reference	
Construction Detail	Description	Test Number	STC	
	<ul style="list-style-type: none"> <li>1" SHEETROCK gypsum liner panels</li> <li>2" USG H-studs 24" o.c.</li> <li>minimum 3/4" air space both sides separating liner panels from adjacent construction</li> </ul>	UL Des U336	SA925 1	
	<ul style="list-style-type: none"> <li>Separation wall (non-load-bearing)</li> <li>1" SHEETROCK gypsum liner panels</li> <li>2" USG H-studs 24" o.c.</li> <li>Protected wall (bearing or non-load-bearing) of wood or steel studs each side min 3/4" from liner panels</li> <li>1/2" SHEETROCK gypsum panels</li> </ul>	UL Des U336	46 <b>RAL-TL-88-353</b> 54 <b>RAL-TL-88-348</b> Based on 2" mineral wool batt on one side 57 <b>RAL-TL-88-351</b> Based on 2x4s and 3" mineral wool batt one side 58 <b>RAL-TL-88-347</b> Based on 2x4s and 2" mineral wool batt on both sides 60 <b>RAL-TL-88-350</b> Based on 2x4s and 3" mineral wool batt on both sides	SA925 2

### Basic Interfaces



### EXTERIOR WALLS

GA FILE NO. WP 8105	GENERIC	1 HOUR FIRE
<b>GYPSON WALLBOARD, GYPSON SHEATHING, WOOD STUDS</b>		
<p>EXTERIOR SIDE: One layer 48" wide 5/8" type X gypsum sheathing applied parallel to 2 x 4 wood studs 24" o.c. with 1 3/4" galvanized roofing nails 4" o.c. at vertical joints and 7" o.c. at intermediate studs and top and bottom plates. Joints of gypsum sheathing may be left untreated. Exterior cladding to be attached through sheathing to studs.</p>		
<p>INTERIOR SIDE: One layer 5/8" type X gypsum wallboard, water-resistant gypsum backing board, or gypsum veneer base applied parallel or at right angles to studs with 6d coated nails 1 7/8" long, 0.0915" shank, 1/4" heads 7" o.c. (<b>LOAD-BEARING</b>)</p>		
Thickness:	Varies	
Approx. Weight:	7 psf	
Fire Test:	See WP 3510 (UL R3501-47, -48, 9-17-65, UL Design U309; UL R1319-129, 7-22-70, UL Design U314)	



### Runner Installation

### Components

*[Handwritten Signature]*

EDWARD L. KELLNE  
H.J. ARCHITECT  
#07771

CONSTRUCTION SEQUENCE DETAILS  
FOR U.L. ASSEMBLIES

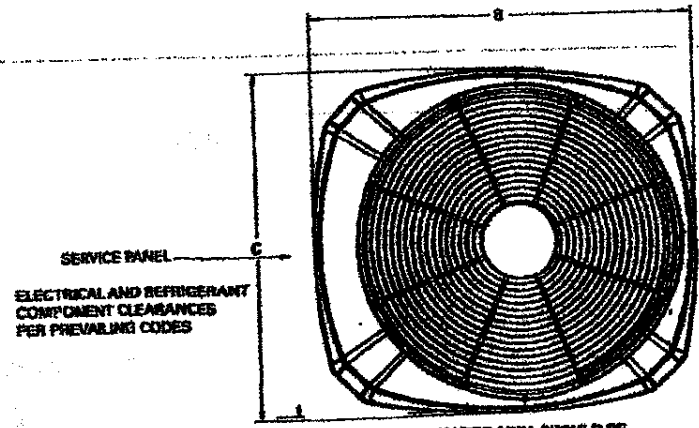
A-8  
OF 8



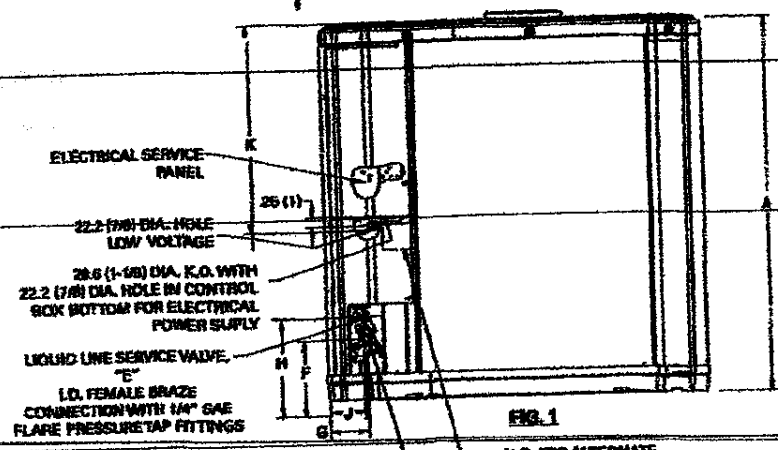
# Product Specifications

OUTDOOR UNIT (40)	4TTR3030G1000N
POWER CONNS. -- V/PH/Hz (4)	208/230/1/60
MIN. BRCH. CIR. AMPACITY	15
BR. CIR. PROT. RTG. -- MAX. (AMPS)	30
COMPRESSOR	CLIMATEPRO SCROLL
NO. USED -- NO. STAGES	1-1
VOLTS/PH/Hz	208/230/1/60
R.L. AMPS (4) -- L.R. AMPS	14.1 -- 73
FACTORY INSTALLED	
START COMPONENTS (4)	NO
INSULATION/SOUND BLANKET	NO
COMPRESSOR HEAT	NO
OUTDOOR FAN	PLUGGED
DIA. (IN.) -- NO. USED	23-1
TYPE DRIVE -- NO. SPEEDS	DIRECT-1
CFM @ 0.0 IN. W.G. (4)	2745
NO. MOTORS -- HP	1-1/8
MOTOR SPEED R.P.M.	825
VOLTS/PH/Hz	208/230/1/60
F.L. AMPS	0.64
OUTDOOR COIL -- TYPE	FLINE FIN
ROWS -- F.P.L.	1-24
FACE AREA (SQ. FT.)	12.89
TUBE SIZE (IN.)	3/8
REFRIGERANT	
LBS. -- R-410A (O.D. UNIT) (4)	5 LBS., 11 OZ
FACTORY SUPPLIED	YES
LINE SIZE -- IN. O.D. GAS (4)	3/4
LINE SIZE -- IN. O.D. LIQ.	3/8
CHARGING SPECIFICATIONS	
SUBCOOLING	10°F
DIMENSIONS	H x W x D
CRATED (IN.)	34 x 30.1 x 33
WEIGHT	
SHIPPING (LBS.)	180
NET (LBS.)	153

- (4) Certified in accordance with the Air-Source Unitary Air-Conditioner Equipment certification program, which is based on AHRI standard 210/240.
- (4) Rated in accordance with AHRI standard 270.
- (4) Calculated in accordance with Natl. Elec. Codes. Use only HACR circuit breakers or fuses.
- (4) This value shown for compressor RLA on the unit nameplate and on this specification sheet is used to compute minimum branch circuit ampacity and max. fuse size. The value shown is the branch circuit selection current.
- (4) No means no start components. Yes means quick start kit components. PTC means positive temperature coefficient starter.
- (4) Standard Air -- Dry Coil -- Outdoor
- (4) This value approximate. For more precise value see unit nameplate.
- (4) Max. linear length 50 ft.; Max. lift -- Section 60 ft.; Max. lift -- Liquid 50 ft. For greater length consult refrigerant piping software Pub. No. 32-3312-0\* (\* denotes latest revision).

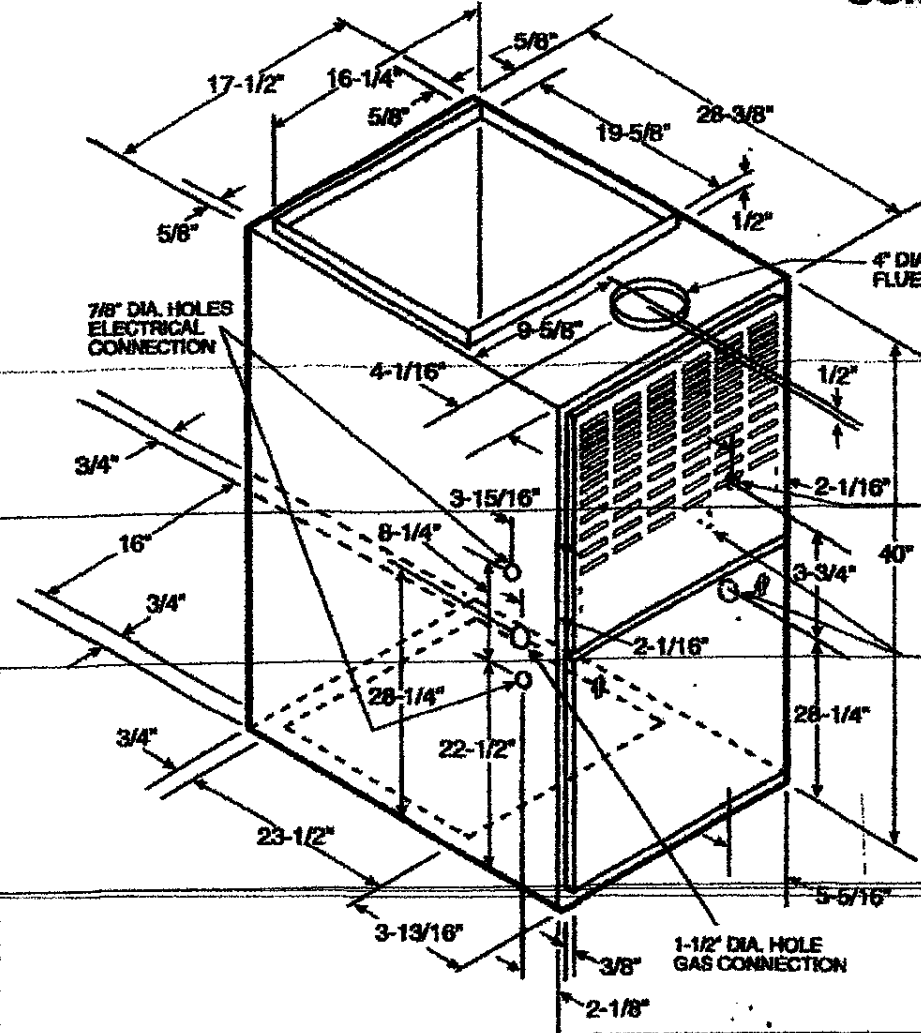


TOP DISCHARGE AREA SHOULD BE UNRESTRICTED FOR AT LEAST 1524 (5 FEET) ABOVE UNIT. UNIT SHOULD BE PLACED SO ROOF RUN-OFF WATER DOES NOT POUR DIRECTLY ON UNIT AND SHOULD BE AT LEAST 305 (12") FROM WALL AND ALL SURROUNDING SHRUBBERY ON TWO SIDES. OTHER TWO SIDES UNRESTRICTED.



From Dwg. D152888

Labels: ELECTRICAL SERVICE PANEL, 22.2 (7/8) DIA. HOLE LOW VOLTAGE, 28.6 (1-1/8) DIA. K.O. WITH 22.2 (7/8) DIA. HOLE IN CONTROL BOX BOTTOM FOR ELECTRICAL POWER SUPPLY, LIQUID LINE SERVICE VALVE "E", L.D. FEMALE BRAZE CONNECTION WITH 1/4" GAS FLARE PRESSURE TAP FITTINGS, K.O. FOR ALTERNATE ELECTRICAL ROUTING, GAS LINE 1/4 TURN BALL SERVICE VALVE "D", L.D. FEMALE BRAZE CONNECTION WITH 1/4" GAS FLARE PRESSURE TAP FITTINGS.



## Upflow/Horizontal Gas Furnace "Fan-Assisted Combustion"

TUD1B060A9361A  
AUD1B060A9361A

Edward L. Kellner  
N.J. License # 01771

Model	Base	A	B	C	D	E	F	G	H	J	K
4TTR3030G	3	730 (28-3/4)	825 (32-5/8)	756 (29-3/4)	3/4	3/8	143 (5-5/8)	92 (3-5/8)	210 (8-1/4)	79 (3-1/8)	508 (20)

Model	A-Weighted Sound Power Level [dB(A)]	Full Octave Sound Power [dB]							
		83 Hz	125 Hz	250 Hz	500 Hz	1000 Hz	2000 Hz	4000 Hz	8000 Hz
4TTR3030G	71	77	68	68	70	69	72	61	58

Note: Rated in accordance with AHRI Standard 270-2008

BLOCK 381 LOT 11  
226 NORTH TEXAS AVE  
ATLANTIC CITY, NJ 08401

FURNACE AIRFLOW (CFM) VS. EXTERNAL STATIC PRESSURE (IN.)							
MODEL	SPEED TAP	0.10	0.20	0.30	0.40	0.50	0.60
TUD1B060A9361A	4 - HIGH - Black	1688	1554	1517	1468	1412	1351
AUD1B060A9361A	3 - MED-HIGH - Blue	1329	1318	1299	1268	1228	1186
	2 - MED-LOW - Yellow	1090	1090	1083	1076	1052	1026
	1 - LOW - Red	894	901	904	894	881	860

CFM VS. TEMPERATURE RISE							
MODEL	CFM (CUBIC FEET PER MINUTE)	TEMPERATURE RISE					
		800	900	1000	1100	1200	1300
TUD1B060A9361A	58	48	44	40	37	34	32
AUD1B060A9361A	58	48	44	40	37	34	32

## HEATING SPECIFICATIONS (Supplement)