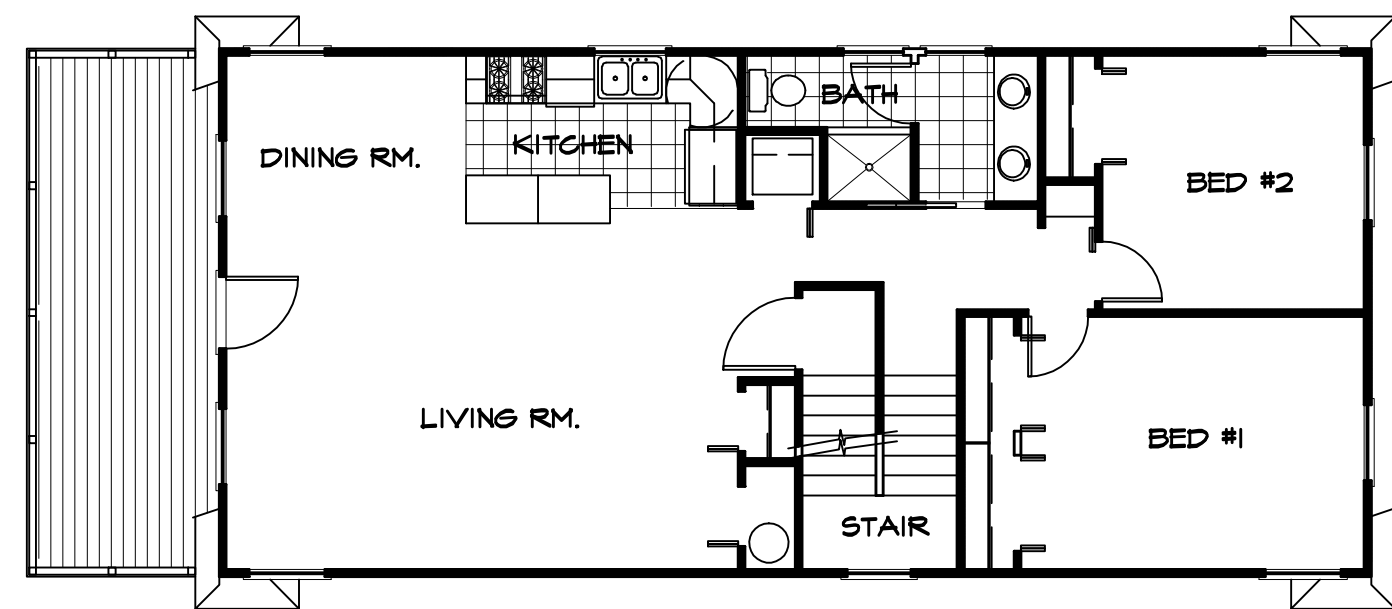
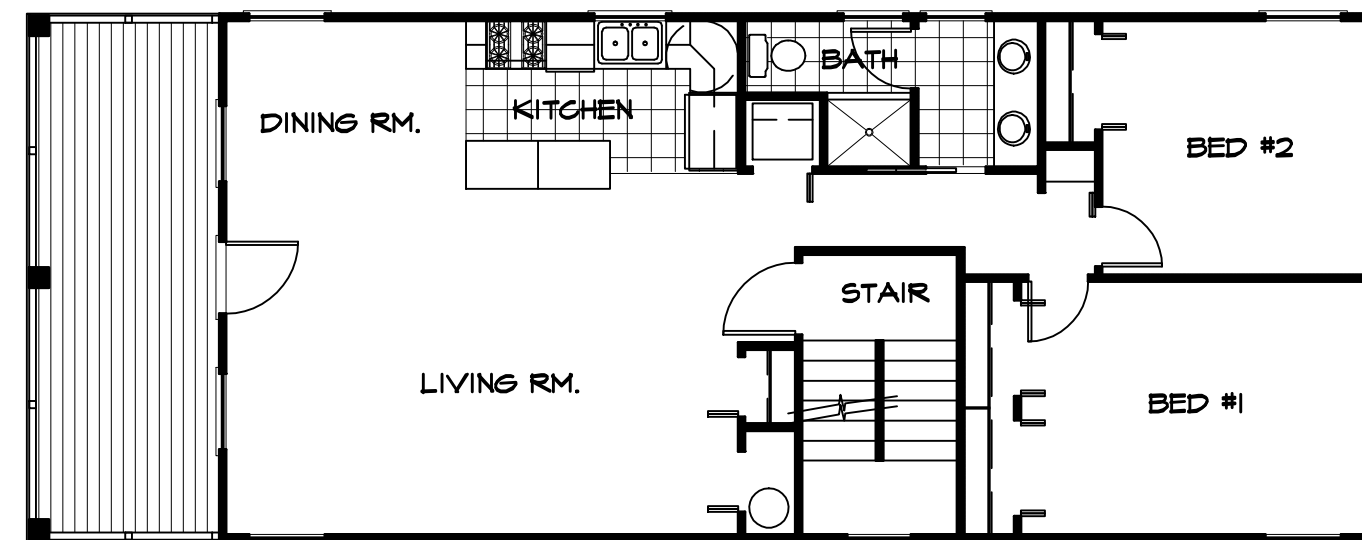


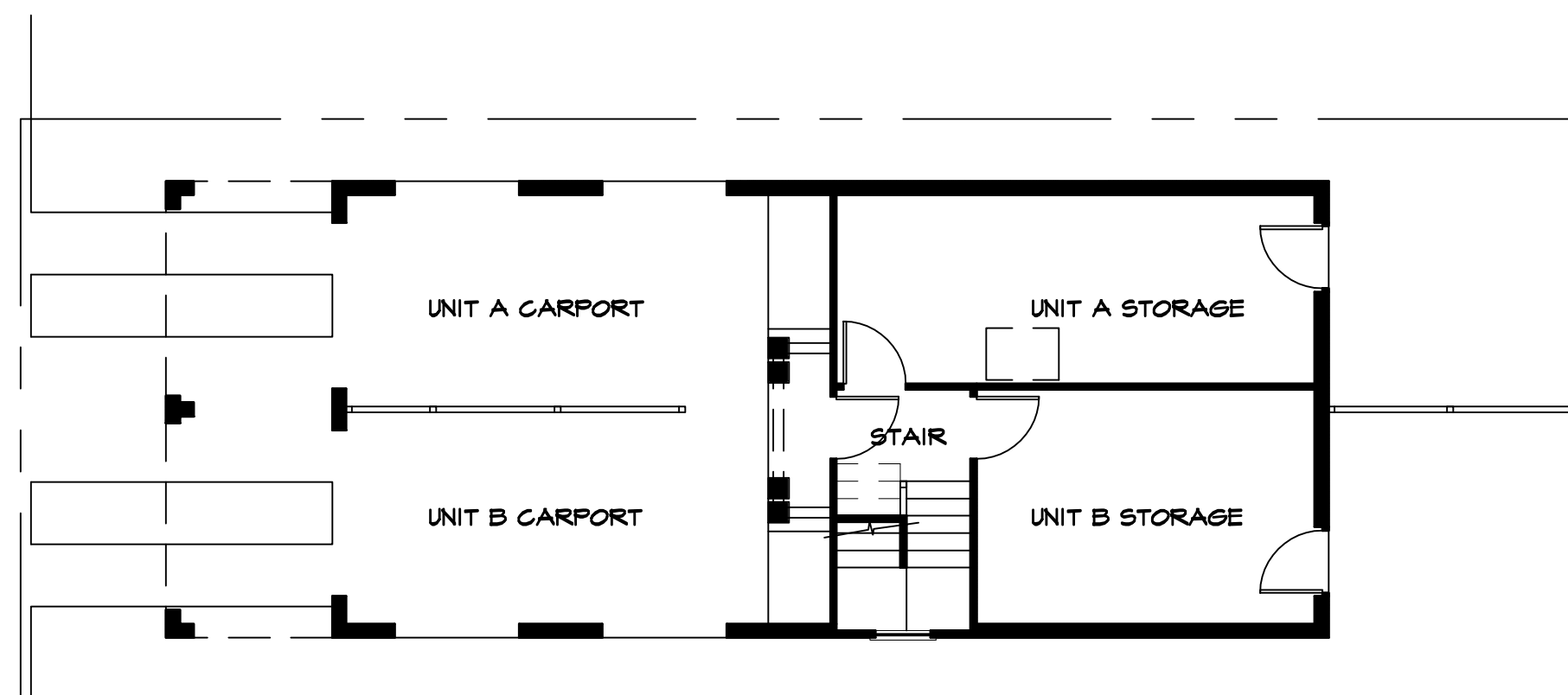
1 HABITABLE ATTIC PLAN (UNIT B)  
VP-1 SCALE: 1/8" = 1'-0"



2 SECOND FLOOR PLAN (UNIT B)  
VP-1 SCALE: 1/8" = 1'-0"



3 FIRST FLOOR PLAN (UNIT A)  
VP-1 SCALE: 1/8" = 1'-0"



4 GROUND FLOOR PLAN (UNITS A & B)  
VP-1 SCALE: 1/8" = 1'-0"



4 VERMONT AVENUE ELEVATION  
VP-1 SCALE: 1/8" = 1'-0"



6 REAR ELEVATION  
VP-1 SCALE: 1/8" = 1'-0"

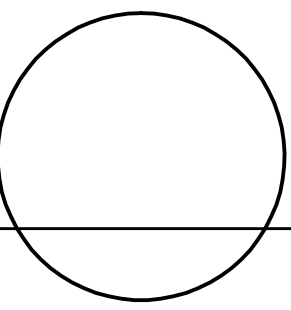


5 RIGHT SIDE ELEVATION  
VP-1 SCALE: 1/8" = 1'-0"



7 LEFT SIDE ELEVATION  
VP-1 SCALE: 1/8" = 1'-0"

VERMONT AVENUE



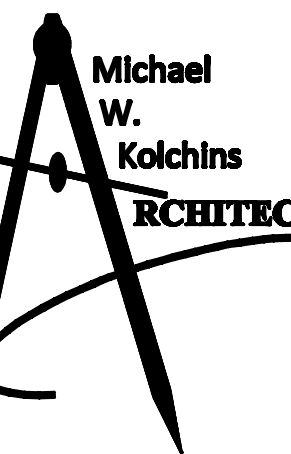
AI 13152

Comments	
Date	
Rev:	

Consultant:

Project:

Proposed Duplex Residence for:  
Estates of A.C.  
206 South Vermont Avenue  
Atlantic City, New Jersey



6021 Third Street  
Mays Landing • New Jersey  
08330

Ph: (609) 625-0391  
Fax: (609) 625-7136

mikolchins@comcast.net  
www.kolchinsarchitect.com

Project # 16-116

Drawn By: MIKE K.

Checked By: MIKE K.

Date: 06/09/16

Scale: AS NOTED

Sht. Name:

VARIANCE PLAN

Sht. No.:

